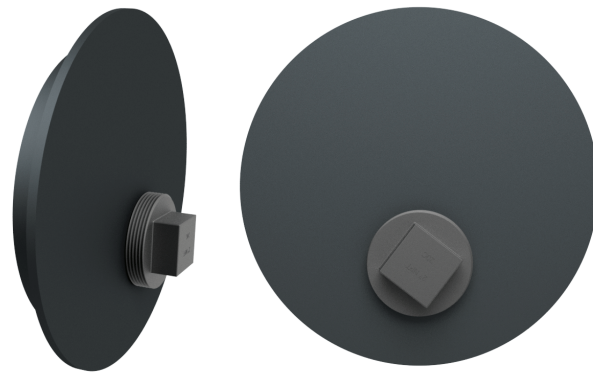


COUPLING END CAP

END CAP: Ductile Iron per ASTM A536 and AWWA C219

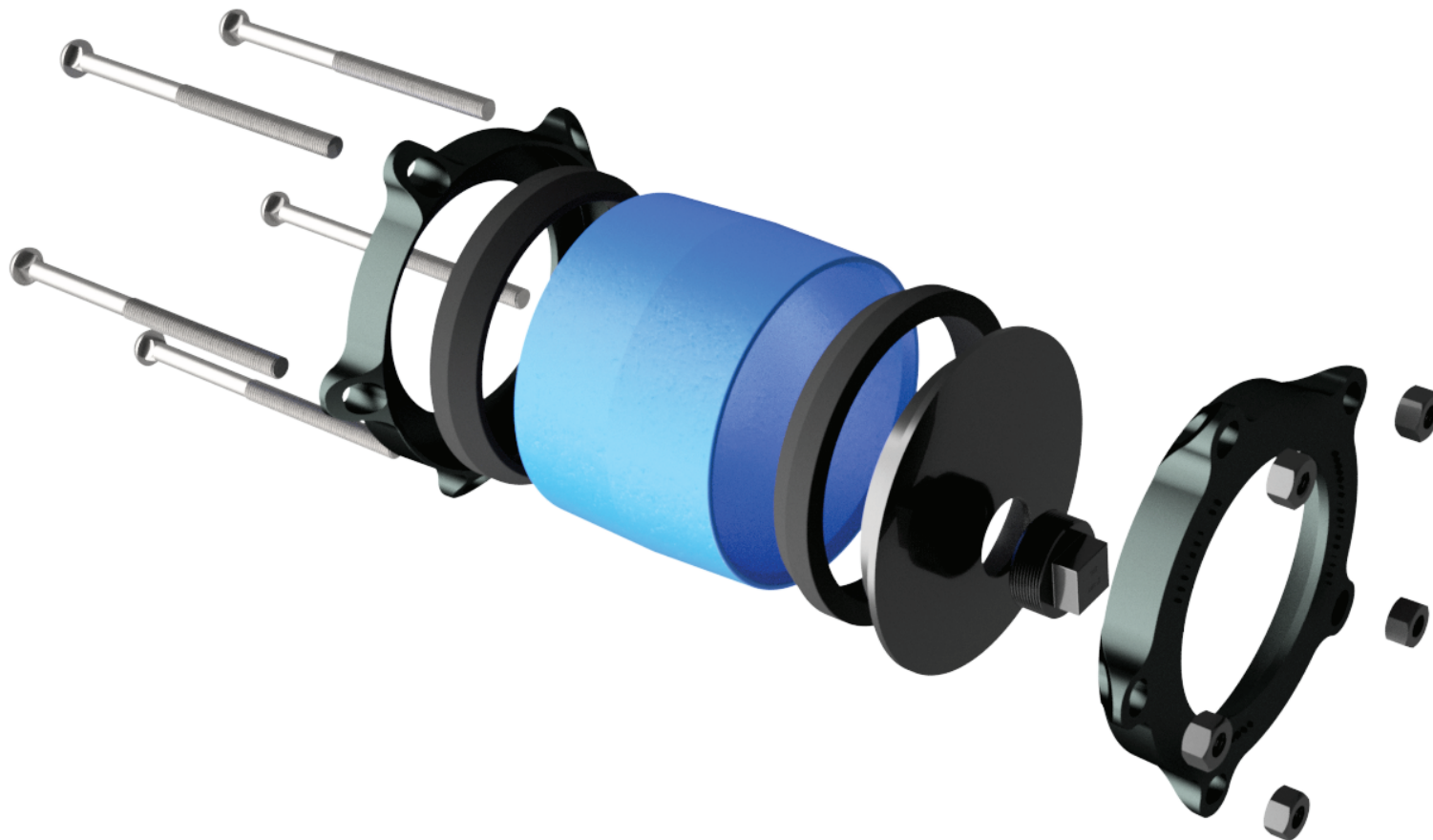


COUPLING END CAP ADD-ON LIST PRICES

Description	Model Number	Size	Part Number	List Price
End cap with 2" NPT Plug	3501	2"	V3501E02	\$ 121.10
		2.5"	V3501E02	\$ 121.90
		3"	V3501E03	\$ 122.70
		4"	V3501E04	\$ 57.50
		6"	V3501E06	\$ 65.40
		8"	V3501E08	\$ 125.70
		10"	V3501E10	\$ 135.90
		12"	V3501E12	\$ 182.50
		14"	V3501E14	\$ 324.10
16"	V3501E16	\$ 371.70		

NOTE: Protection against possible pull out of pipe ends is not provided with cast couplings unless pipe is restrained.

HOW TO ORDER: Specify Model Number, Pipe Size with Letter Code(s). **EXAMPLE:** To connect an end cap coupling to a plain end piece of pipe with an O.D. of 4.80 order 3501EC-4B Part Number: 350104B000EC



TRANSITION COUPLING 3501

CENTER BARREL: Ductile Iron per ASTM A536 and AWWA C219.
GASKET: SBR per ASTM D2000 with transition design produced from 100% new rubber to ensure performance under varying pressures with superior storage characteristics per AWWA C219. Suitable for mild acids, water and salt media with a temperature range of -40° to +200° F. Other materials available.
BOLTS & NUTS: Low Alloy Steel per ASTM A325, ASTM A563, and AWWA C219. Type 304 (18-8) Stainless Steel per ASTM A193 and A194. Type 316 available.
GLANDS: Ductile Iron per ASTM A536 and AWWA C219.
FINISH: Epoxy.



Nominal Pipe Size		Pipe OD Range		Approx. Weight		Barrel Length		Bolts	Part Number	List Price	Part Number w/SST N&Bs	List Price w/SST N&Bs	
In	MM	In	MM	lbs	kgs	In	MM	Qty					
2	50	A	2.35-2.63	60-67	8	4	5	125	2	350102A00000	\$129.90	350102A0SS00	\$169.30
2 1/2	65	A	2.69-2.88	68-73	10	5	5	125	2	3501025A0000	\$153.30	3501025A0SS00	\$197.60
3	80	A	3.25-3.55	83-90	13	6	5	125	3	350103A00000	\$206.80	350103A0SS00	\$298.50
		B	3.70-4.00	94-102						350103B00000		350103B0SS00	
		C	3.95-4.25	100-108						350103C00000		350103C0SS00	
4	100	OD	4.00-4.13	102-105	19	8	6	150	4	350104D00000	\$245.20	350104D0SS00	\$324.20
		AA	4.20-4.50	107-144						350104AA0000		350104AA0SS00	
		A	4.50-4.85	114-123						350104A00000		350104A0SS00	
		B	4.80-5.10	122-130						350104B00000		350104B0SS00	
		C	5.05-5.40	128-137						350104C00000		350104C0SS00	
6	150	OD	6.00-6.14	152-156	27	12	6	150	5	350106D00000	\$333.70	350106D0SS00	\$432.50
		AA	6.27-6.72	159-171						350106AA0000		350106AA0SS00	
		A	6.62-6.95	168-177						350106A00000		350106A0SS00	
		B	6.90-7.22	175-183						350106B00000		350106B0SS00	
		C	7.19-7.45	183-189						350106C00000		350106C0SS00	
8	200	OD	8.00-8.16	203-207	38	17	6	150	6	350108D00000	\$422.80	350108D0SS00	\$541.30
		AA	8.40-8.82	213-224						350108AA0000		350108AA0SS00	
		A	8.62-9.05	219-230						350108A00000		350108A0SS00	
		B	9.05-9.45	230-240						350108B00000		350108B0SS00	
		C	9.10-9.79	231-249						350108C00000		350108C0SS00	
10	250	A	10.70-11.10	272-282	52	24	6	150	7	350110A00000	\$583.30	350110A0SS00	\$743.80
		B	11.10-11.50	282-292						350110B00000		350110B0SS00	
		C	11.60-12.12	295-308						350110C00000		350110C0SS00	
12	300	A	12.75-13.20	324-335	70	32	6	150	8	350112A00000	\$701.60	350112A0SS00	\$885.00
		B	13.20-13.50	335-343						350112B00000		350112B0SS00	
		C	13.78-14.38	350-365						350112C00000		350112C0SS00	
14	350	A	15.30-15.70	389-399	91	41	6	150	9	350114A00000	\$1,215.60	350114A0SS00	\$1,429.30
		B	16.00-16.40	406-417						350114B00000		350114B0SS00	
		C	16.40-16.88	417-429						350114C00000		350114C0SS00	
16	400	A	17.15-17.40	436-442	105	48	6	150	10	350116A00000	\$1,464.50	350116A0SS00	\$1,704.90
		B	17.40-17.80	442-457						350116B00000		350116B0SS00	
		C	18.46-19.00	469-483						350116C00000		350116C0SS00	

Note: Protection against possible pull out of pipe ends is not provided with cast couplings unless pipe is restrained. Any combination of pipe OD Ranges can be paired within a nominal Pipe Size to make a transition connection. Example: To connect 4 inch Steel (4.50 OD) To 4 Inch Asbestos-cement (5.33 OD) order the 4AC coupling. The "A" Range will fit 4.50 to 4.85 pipe ODs and the "C" range fits 5.05 to 5.40 pipe ODs.