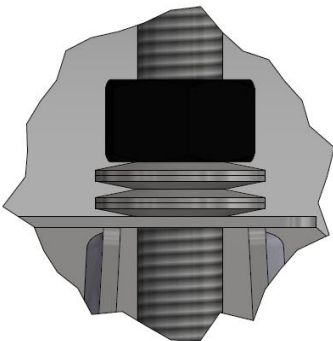
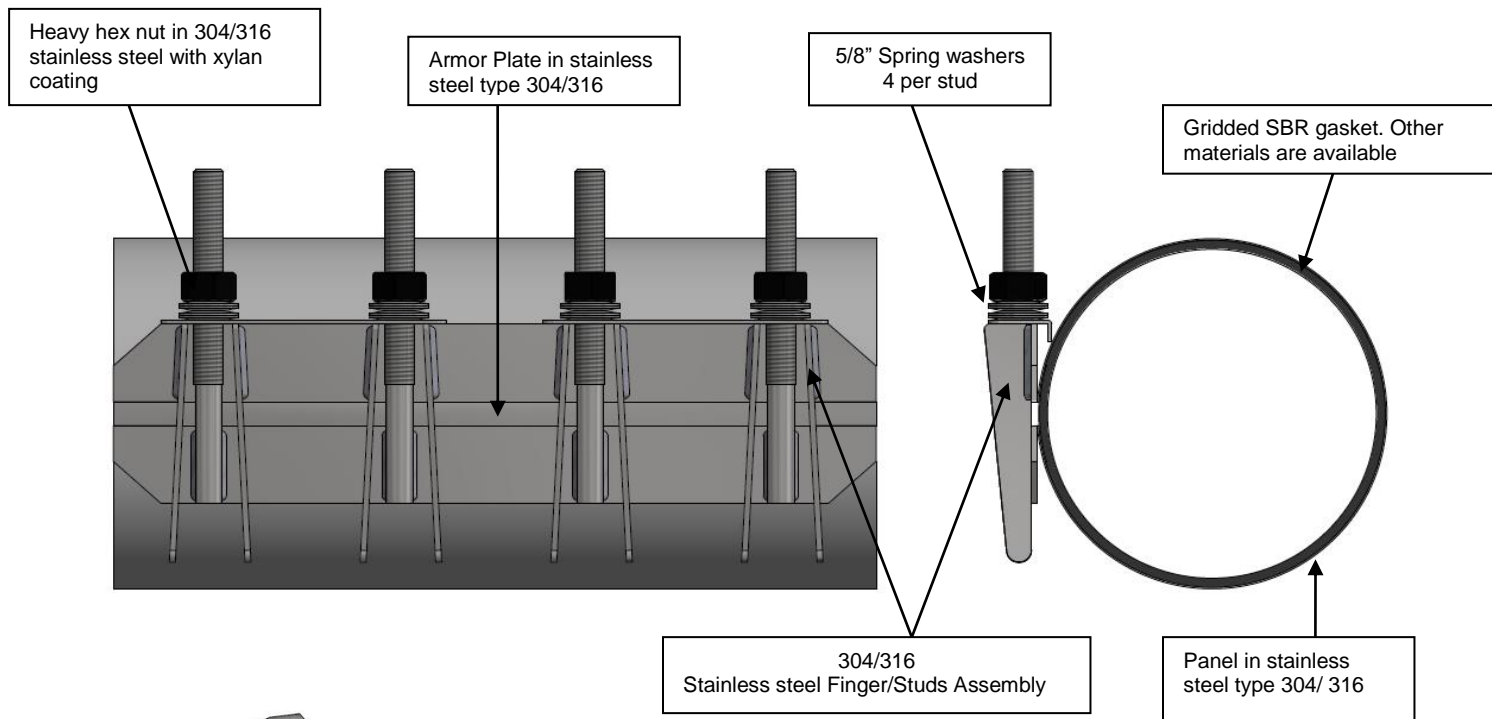


Features and Benefits

1. Materials do not compromise the integrity of the pipeline.
2. 5/8" stud bolts MIG welded to lug plates (captive design) makes installation easy and eliminates loose pieces in the field.
3. Due to stainless steel panel construction clamps can be manufactured in range to fit any pipe diameter.
4. Clamps are available with NPT or AWWA (CC) tapped outlets 1/2" -3" for repairing damaged service connections.
5. Gasket design makes sealing on pitted or corroded pipe possible and lessens bolt torque required to attain leak stoppage.
6. Heavy hex nut with fusion bonded coating to prevent seizing and galling.
7. Lifter bar acts as bearing surface for nuts, special design lip holds position while tightening.
8. Plastic washers reduce friction between lifter bars and nuts
9. Long life capability due to totally 304/316 stainless design.



Waterworks pipes can experience changes due to temperature and pressure depending on the field conditions. High-Density Polyethylene Pipe (HDPE) possesses mechanical and thermal properties that cause the expansion or contraction of the pipe because of these changes. 3121AS-PE with spring washers design will support those possible pipe changes without compromising the tightness of the clamp.

Scope

The intent of the specification is to receive 1 ¼” and up diameter all stainless steel repair clamps capable of repairing leaks in all pressure classes of steel, cast and ductile iron, PVC, and asbestos cement pipes. The repair clamp furnished shall be equivalent to Model 3121AS as manufactured by PowerSeal Pipeline Products Corporation.

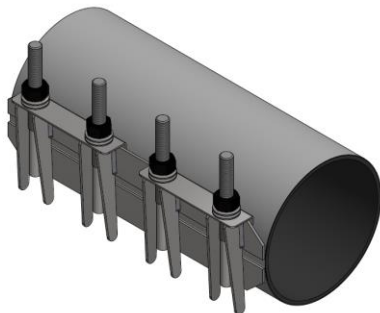
Design and Material Specification

The full circle repair clamp shall meet or exceed all material specifications as listed below:

1. The exterior band of the repair clamp shall be type 304 or 316 stainless steel.
2. The repair clamp shall have a complete circle gasket permanently attached to the panel at the factory.

The complete circle gasket shall be our gridded design in SBR. It shall be free from porous areas, foreign material, and visible defects, all made from 100% new rubber. The SBR resists temperatures of -25 to +200°F. The armor plate shall be made of stainless steel. It shall be recessed and vulcanized into the gasket. Other materials are available.

3. Spring washers in stainless steel type 304 per ASTM A240.
4. There shall be no paper or plastic adhesive labels attached to the repair clamp, any information appearing on the clamps shall be stenciled.
5. Fully complies with AWWA C230 and NSF 61.



Material Specifications		
Part Name	Material	Mat. specs
Panel	Stainless Steel type 304/316	ASTM A240
Armor Plate	Stainless Steel type 304/316	ASTM A240
Lugs	Stainless Steel type 304/316	ASTM A240
Bolts	Stainless Steel type 304/316	ASTM A193
Nuts	Stainless Steel type 304/316	ASTM A194
Gasket	SBR	ASTM D2000

*The pressure rating depends on the installation and the extent of damage of the pipe as well as the condition of the pipe.