

## 3121HD SINGLE PANEL HIGH PRESSURE HEAVY DUTY CLAMP

**PANEL:** Type 304 (18-8) Stainless Steel per ASTM A240.

**GASKET:** SBR Chek-O-Seal with multi o-ring sealing ribs from 100% new rubber to ensure performance under varying pressures with superior storage characteristics. Suitable for mild acids, water and salt media with a temperature range of 25°F to +200°F, per ASTM D2000 . Other materials available.

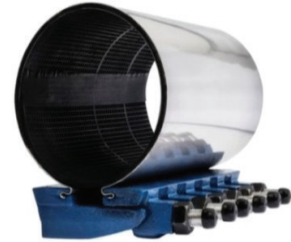
**ARMOR PLATE:** Type 304 (18-8) Stainless Steel per ASTM A240, recessed and bonded to the gasket.

**BOLTS & NUTS:** 3/4" diameter low Alloy Steel per ASTM A325, ASTM A563, and AWWA C111. Optional SS available.

**LUGS:** Ductile Iron per ASTM A536.

**MEETS AWWA C230**

**NOTE: EXACT PIPE OD MUST BE PROVIDED AT TIME OF ORDER.**



Nominal Pipe Size		Pipe OD Range		Width		Part Number	List Price
Inches	MM	Inches	MM	Inches	MM		
4A	100	4.45 - 4.73	113-120	10	250	312104A100AA-HD	\$ 341.40
				15	350	312104A150AA-HD	\$ 499.10
				20	500	312104A200AA-HD	\$ 670.30
				30	750	312104A300AA-HD	\$ 1,032.50
4B	100	4.74 - 5.14	120 - 131	10	250	312104B100AA-HD	\$ 341.40
				15	350	312104B150AA-HD	\$ 499.10
				20	500	312104B200AA-HD	\$ 670.30
				30	750	312104B300AA-HD	\$ 1,032.50
4C	100	4.95 - 5.35	126 - 136	10	250	312104C100AA-HD	\$ 341.40
				15	350	312104C150AA-HD	\$ 499.10
				20	500	312104C200AA-HD	\$ 670.30
				30	750	312104C300AA-HD	\$ 1,032.50
4D	100	5.22 - 5.62	133 - 143	10	250	312104D100AA-HD	\$ 341.40
				15	350	312104D150AA-HD	\$ 499.10
				20	500	312104D200AA-HD	\$ 670.30
				30	750	312104D300AA-HD	\$ 1,032.50
6A	150	5.95 - 6.35	151 - 161	10	250	312106A100AA-HD	\$ 404.10
				15	350	312106A150AA-HD	\$ 553.90
				20	500	312106A200AA-HD	\$ 802.60
				30	750	312106A300AA-HD	\$ 1,169.50
6B	150	6.56 - 6.96	167 - 177	10	250	312106B100AA-HD	\$ 404.10
				15	350	312106B150AA-HD	\$ 553.90
				20	500	312106B200AA-HD	\$ 802.60
				30	750	312106B300AA-HD	\$ 1,169.50

### 3121HD SINGLE PANEL HIGH PRESSURE HEAVY DUTY CLAMP

Nominal Pipe Size		Pipe OD Range		Width		Part Number	List Price
Inches	MM	Inches	MM	Inches	MM		
6C	150	6.84 - 7.24	174 - 184	10	250	312106C100AA-HD	\$ 404.10
				15	350	312106C150AA-HD	\$ 553.90
				20	500	312106C200AA-HD	\$ 802.60
				30	750	312106C300AA-HD	\$ 1,169.50
6D	150	7.05 - 7.45	179 - 189	10	250	312106D100AA-HD	\$ 404.10
				15	350	312106D150AA-HD	\$ 553.90
				20	500	312106D200AA-HD	\$ 802.60
				30	750	312106D300AA-HD	\$ 1,169.50
6E	150	7.45 - 7.85	189 - 199	10	250	312106E100AA-HD	\$ 404.10
				15	350	312106E150AA-HD	\$ 553.90
				20	500	312106E200AA-HD	\$ 802.60
				30	750	312106E300AA-HD	\$ 1,169.50
8A	200	7.95 - 8.35	202 - 212	10	250	312108A100AA-HD	\$ 471.60
				15	350	312108A150AA-HD	\$ 680.40
				20	500	312108A200AA-HD	\$ 942.20
				30	750	312108A300AA-HD	\$ 1,326.40
8B	200	8.54 - 8.94	217 - 227	10	250	312108B100AA-HD	\$ 471.60
				15	350	312108B150AA-HD	\$ 680.40
				20	500	312108B200AA-HD	\$ 942.20
				30	750	312108B300AA-HD	\$ 1,326.40
8C	200	8.99 - 9.39	228 - 239	10	250	312108C100AA-HD	\$ 471.60
				15	350	312108C150AA-HD	\$ 680.40
				20	500	312108C200AA-HD	\$ 942.20
				30	750	312108C300AA-HD	\$ 1,326.40
8D	200	9.27 - 9.67	235 - 246	10	250	312108D100AA-HD	\$ 471.60
				15	350	312108D150AA-HD	\$ 680.40
				20	500	312108D200AA-HD	\$ 942.20
				30	750	312108D300AA-HD	\$ 1,326.40
10A	250	9.70 - 10.10	246 - 257	10	250	312110A100AA-HD	\$ 586.20
				15	350	312110A150AA-HD	\$ 849.50
				20	500	312110A200AA-HD	\$ 1,135.40
				30	750	312110A300AA-HD	\$ 1,726.30
10B	250	10.64 - 11.04	270 - 280	10	250	312110B100AA-HD	\$ 586.20
				15	350	312110B150AA-HD	\$ 849.50
				20	500	312110B200AA-HD	\$ 1,135.40
				30	750	312110B300AA-HD	\$ 1,726.30
10C	250	11.04 - 11.44	280 - 291	10	250	312110C100AA-HD	\$ 586.20
				15	350	312110C150AA-HD	\$ 849.50
				20	500	312110C200AA-HD	\$ 1,135.40
				30	750	312110C300AA-HD	\$ 1,726.30

**3121HD SINGLE PANEL HIGH PRESSURE HEAVY DUTY CLAMP**

Nominal Pipe Size		Pipe OD Range		Width		Part Number	List Price
Inches	MM	Inches	MM	Inches	MM		
10D	250	11.34 - 11.74	288 - 298	10	250	312110D100AA-HD	\$ 586.20
				15	400	312110D150AA-HD	\$ 849.50
				20	500	312110D200AA-HD	\$ 1,135.40
				30	750	312110D300AA-HD	\$ 1,726.30
10E	250	11.75 - 12.15	298 - 309	10	250	312110E100AA-HD	\$ 586.20
				15	400	312110E150AA-HD	\$ 849.50
				20	500	312110E200AA-HD	\$ 1,135.40
				30	750	312110E300AA-HD	\$ 1,726.30
12A	300	12.00 - 12.40	305 - 315	10	250	312112A100AA-HD	\$ 650.90
				15	350	312112A150AA-HD	\$ 978.70
				20	500	312112A200AA-HD	\$ 1,292.60
				30	750	312112A300AA-HD	\$ 1,957.20
12B	300	12.62 - 13.02	321 - 331	10	250	312112B100AA-HD	\$ 651.00
				15	350	312112B150AA-HD	\$ 978.70
				20	500	312112B200AA-HD	\$ 1,292.60
				30	750	312112B300AA-HD	\$ 1,957.20
12C	300	13.10 - 13.50	333 - 343	10	250	312112C100AA-HD	\$ 650.90
				15	350	312112C150AA-HD	\$ 978.70
				20	500	312112C200AA-HD	\$ 1,292.60
				30	750	312112C300AA-HD	\$ 1,957.20
12D	300	13.40 - 13.80	340 - 351	10	250	312112D100AA-HD	\$ 650.90
				15	350	312112D150AA-HD	\$ 978.70
				20	500	312112D200AA-HD	\$ 1,292.60
				30	750	312112D300AA-HD	\$ 1,957.20
12E	300	13.70 - 14.10	348 - 358	10	250	312112E100AA-HD	\$ 650.90
				15	350	312112E150AA-HD	\$ 978.70
				20	500	312112E200AA-HD	\$ 1,292.60
				30	750	312112E300AA-HD	\$ 1,957.20
12F	300	14.00 - 14.40	356 - 366	10	250	312112F100AA-HD	\$ 650.90
				15	350	312112F150AA-HD	\$ 978.70
				20	500	312112F200AA-HD	\$ 1,292.60
				30	750	312112F300AA-HD	\$ 1,957.20

**NOTE: EXACT PIPE OD MUST BE PROVIDED AT TIME OF ORDER.**

With regard to this Pipe Repair Clamps working pressure capabilities; these repair devices are not specifically rated because of application variables that exist in the field. The amount of pressure that any repair clamp will hold is relative to the pipe's diameter, the clamp's length, and the amount of bolt torque.

The application's success with regards to pressure capability is also dependent on the type and extent of pipe damage, service and environmental conditions, and most important the installation workmanship. Please consult with PowerSeal engineering about your specific high pressure situation.

**Pipe OD Range = Pipe OD range shown is for pricing only. This particular model of clamp will be made to fit actual OD plus or minus a small variance amount.**



**COATING OPTION:** Anti-Seizing/Galling protection. Available for both Alloy and SST application.

Inquire with sales for cost and availability.