

## 3122 IRON LUG DOUBLE PANEL

**PANEL:** Type 304 (18-8) Stainless Steel per ASTM A240

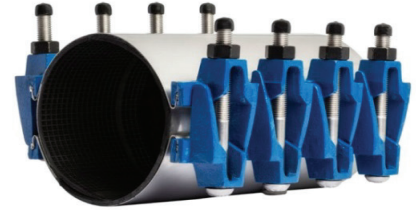
**GASKET:** SBR Chek-O-Seal with multi o-ring sealing ribs from 100% new rubber to ensure performance under varying pressures with superior storage characteristics. Suitable for mild acids, water and salt media with a temperature range of -25°F to +200°F per ASTM D2000 . Other materials available.

**ARMOR PLATE:** Type 304 (18-8) Stainless Steel per ASTM A240, recessed and bonded to the gasket.

**BOLTS & NUTS:** Low Alloy Steel per ASTM A325, ASTM A563, and AWWA C111.

**LUGS:** Ductile Iron per ASTM A536.

**MEETS AWWA C230**



Nominal Pipe Size		Pipe OD Range		Width		Part Number	List Price
Inches	MM	Inches	MM	Inches	MM		
3	75	3.49-4.29	89-109	8	200	3122030080AA-LB	\$ 168.70
				10	250	3122030100AA-LB	\$ 205.80
				12	300	3122030120AA-LB	\$ 268.60
				16	400	3122030160AA-LB	\$ 331.40
				20	500	3122030200AA-LB	\$ 534.50
				24	600	3122030240AA-LB	\$ 596.50
				30	750	3122060300AA-LB	\$ 660.20
4A	100	4.44 - 5.24	113-133	8	200	312204A080AA-LB	\$ 182.00
				10	250	312204A100AA-LB	\$ 242.30
				12	300	312204A120AA-LB	\$ 287.90
				16	400	312204A160AA-LB	\$ 360.50
				20	500	312204A200AA-LB	\$ 540.80
				24	600	312204A240AA-LB	\$ 630.40
				30	750	312204A300AA-LB	\$ 721.10
4B	100	4.74 - 5.57	120-141	8	200	312204B080AA-LB	\$ 182.00
				10	250	312204B100AA-LB	\$ 242.30
				12	300	312204B120AA-LB	\$ 287.90
				16	400	312204B160AA-LB	\$ 360.50
				20	500	312204B200AA-LB	\$ 540.80
				24	600	312204B240AA-LB	\$ 630.40
				30	750	312204B300AA-LB	\$ 721.10

**3122 IRON LUG DOUBLE PANEL**

Nominal Pipe Size		Pipe OD Range		Width		Part Number	List Price
Inches	MM	Inches	MM	Inches	MM		
6A	150	6.62 - 7.42	168-188	8	200	312206A080AA-LB	\$ 216.30
				10	250	312206A100AA-LB	\$ 278.20
				12	300	312206A120AA-LB	\$ 324.50
				16	400	312206A160AA-LB	\$ 420.40
				20	500	312206A200AA-LB	\$ 576.90
				24	600	312206A240AA-LB	\$ 720.70
				30	750	312206A300AA-LB	\$ 865.30
6B	150	6.84 - 7.64	174-194	8	200	312206B080AA-LB	\$ 216.30
				10	250	312206B100AA-LB	\$ 278.20
				12	300	312206B120AA-LB	\$ 324.50
				16	400	312206B160AA-LB	\$ 420.40
				20	500	312206B200AA-LB	\$ 576.90
				24	600	312206B240AA-LB	\$ 720.70
				30	750	312206B300AA-LB	\$ 865.30
8A	200	8.62 - 9.42	219-239	8	200	312208A080AA-LB	\$ 244.60
				10	250	312208A100AA-LB	\$ 309.00
				12	300	312208A120AA-LB	\$ 360.50
				16	400	312208A160AA-LB	\$ 478.00
				20	500	312208A200AA-LB	\$ 638.70
				24	600	312208A240AA-LB	\$ 798.00
				30	750	312208A300AA-LB	\$ 958.50
8B	200	8.99 - 9.79	228-249	8	200	312208B080AA-LB	\$ 244.60
				10	250	312208B100AA-LB	\$ 309.00
				12	300	312208B120AA-LB	\$ 360.50
				16	400	312208B160AA-LB	\$ 478.00
				20	500	312208B200AA-LB	\$ 638.70
				24	600	312208B240AA-LB	\$ 798.00
				30	750	312208B300AA-LB	\$ 958.50
10A	250	10.75 - 11.55	273-293	8	200	312210A080AA-LB	\$ 271.20
				10	250	312210A100AA-LB	\$ 355.30
				12	300	312210A120AA-LB	\$ 411.10
				16	400	312210A160AA-LB	\$ 643.90
				20	500	312210A200AA-LB	\$ 824.00
				24	600	312210A240AA-LB	\$ 1,029.40
				30	750	312210A300AA-LB	\$ 1,236.20

## 3122 IRON LUG DOUBLE PANEL

Nominal Pipe Size		Pipe OD Range		Width		Part Number	List Price
Inches	MM	Inches	MM	Inches	MM		
10D	250	11.60 - 12.40	295-315	8	200	312210D080AA-LB	\$ 271.20
				10	250	312210D100AA-LB	\$ 355.30
				12	300	312210D120AA-LB	\$ 411.10
				16	400	312210D160AA-LB	\$ 643.90
				20	500	312210D200AA-LB	\$ 824.00
				24	600	312210D240AA-LB	\$ 1,029.40
				30	750	312210D300AA-LB	\$ 1,236.20
12A	300	12.75 - 13.55	324-344	8	200	312212A080AA-LB	POA
				10	250	312212A100AA-LB	\$ 400.20
				12	300	312212A120AA-LB	\$ 458.40
				16	400	312212A160AA-LB	\$ 679.90
				20	500	312212A200AA-LB	\$ 909.00
				24	600	312212A240AA-LB	\$ 1,134.20
				30	750	312212A300AA-LB	\$ 1,359.80
12B	300	13.20 - 14.00	335-356	8	200	312212B080AA-LB	POA
				10	250	312212B100AA-LB	\$ 400.20
				12	300	312212B120AA-LB	\$ 458.40
				16	400	312212B160AA-LB	\$ 679.90
				20	500	312212B200AA-LB	\$ 909.00
				24	600	312212B240AA-LB	\$ 1,134.20
				30	750	312212B300AA-LB	\$ 1,359.80
12D	300	13.65 - 14.45	347-367	8	200	312212D080AA-LB	POA
				10	250	312212D100AA-LB	\$ 400.20
				12	300	312212D120AA-LB	\$ 458.40
				16	400	312212D160AA-LB	\$ 679.90
				20	500	312212D200AA-LB	\$ 909.00
				24	600	312212D240AA-LB	\$ 1,134.20
				30	750	312212D300AA-LB	\$ 1,359.80
14A	350	14.38 - 15.13	365-384	10	250	312214A100AA-LB	\$ 717.50
				12	300	312214A120AA-LB	\$ 876.70
				16	400	312214A160AA-LB	\$ 1,031.50
				20	500	312214A200AA-LB	\$ 1,399.70
				24	600	312214A240AA-LB	\$ 1,757.60
				30	750	312214A300AA-LB	\$ 2,117.20
14B	350	15.07 - 15.82	383-402	10	250	312214B100AA-LB	\$ 717.50
				12	300	312214B120AA-LB	\$ 876.70
				16	400	312214B160AA-LB	\$ 1,031.50
				20	500	312114B200AA-LB	\$ 1,399.70
				24	600	312214B240AA-LB	\$ 1,757.60
				30	750	312214B300AA-LB	\$ 2,117.20

**3122 IRON LUG DOUBLE PANEL**

Nominal Pipe Size		Pipe OD Range		Width		Part Number	List Price
Inches	MM	Inches	MM	Inches	MM		
16A	400	15.92 - 16.67	404-423	10	250	312216A100AA-LB	\$ 755.30
				12	300	312216A120AA-LB	\$ 924.90
				16	400	312216A160AA-LB	\$ 1,088.10
				20	500	312216A200AA-LB	\$ 1,475.20
				24	600	312216A240AA-LB	\$ 1,843.40
				30	750	312216A300AA-LB	\$ 2,212.80
16B	400	16.56 - 17.31	421-440	10	250	312216B100AA-LB	\$ 755.30
				12	300	312216B120AA-LB	\$ 924.90
				16	400	312216B160AA-LB	\$ 1,088.10
				20	500	312216B200AA-LB	\$ 1,475.20
				24	600	312216B240AA-LB	\$ 1,843.40
				30	750	312216B300AA-LB	\$ 2,212.80
16C	400	17.15 - 17.90	436-455	10	250	312216C100AA-LB	\$ 755.30
				12	300	312216C120AA-LB	\$ 924.90
				16	400	312216C160AA-LB	\$ 1,088.10
				20	500	312216C200AA-LB	\$ 1,475.20
				24	600	312216C240AA-LB	\$ 1,843.40
				30	750	312216C300AA-LB	\$ 2,212.80
18A	450	17.82 - 18.57	453-472	12	300	312218A120AA-LB	\$ 945.00
				16	400	312218A160AA-LB	\$ 1,111.70
				20	500	312218A200AA-LB	\$ 1,501.20
				24	600	312218A240AA-LB	\$ 1,887.20
				30	750	312218A300AA-LB	\$ 2,275.40
18B	450	18.46 - 19.21	469-488	12	300	312218B120AA-LB	\$ 945.00
				16	400	312218B160AA-LB	\$ 1,111.70
				20	500	312218B200AA-LB	\$ 1,501.20
				24	600	312218B240AA-LB	\$ 1,887.20
				30	750	312218B300AA-LB	\$ 2,275.40
18C	450	19.23 - 19.98	488-507	12	300	312218C120AA-LB	\$ 945.00
				16	400	312218C160AA-LB	\$ 1,111.70
				20	500	312218C200AA-LB	\$ 1,501.20
				24	600	312218C240AA-LB	\$ 1,887.20
				30	750	312218C300AA-LB	\$ 2,275.40
20A	500	19.90 - 20.65	505-525	12	300	312220A120AA-LB	\$ 1,014.90
				16	400	312220A160AA-LB	\$ 1,194.30
				20	500	312220A200AA-LB	\$ 1,619.20
				24	600	312220A240AA-LB	\$ 2,033.90
				30	750	312220A300AA-LB	\$ 2,450.00
20B	500	20.70 - 21.45	526-545	12	300	312220B120AA-LB	\$ 1,014.90
				16	400	312220B160AA-LB	\$ 1,194.30
				20	500	312220B200AA-LB	\$ 1,619.20
				24	600	312220B240AA-LB	\$ 2,033.90
				30	750	312220B300AA-LB	\$ 2,450.00

## 3122 IRON LUG DOUBLE PANEL

Nominal Pipe Size		Pipe OD Range		Width		Part Number	List Price
Inches	MM	Inches	MM	Inches	MM		
22A	550	21.52 - 22.27	547-566	12	300	312222A120AA-LB	\$ 1,705.60
				16	400	312222A160AA-LB	\$ 2,006.60
				20	500	312222A200AA-LB	\$ 2,605.20
				24	600	312222A240AA-LB	\$ 3,359.60
				30	750	312222A300AA-LB	\$ 4,115.80
22B	550	22.12 - 22.87	562-581	12	300	312222B120AA-LB	\$ 1,705.60
				16	400	312222B160AA-LB	\$ 2,006.60
				20	500	312222B200AA-LB	\$ 2,605.20
				24	600	312222B240AA-LB	\$ 3,359.60
				30	750	312222B300AA-LB	\$ 4,115.80
22C	550	22.90 - 23.65	582-601	12	300	312222C120AA-LB	\$ 1,705.60
				16	400	312222C160AA-LB	\$ 2,006.60
				20	500	312222C200AA-LB	\$ 2,605.20
				24	600	312222C240AA-LB	\$ 3,359.60
				30	750	312222C300AA-LB	\$ 4,115.80

### MANUFACTURERS RECOMMENDATIONS

- Clamp width should equal or exceed pipe diameter for higher working pressures.
- Repair Clamps are not recommended for use in joining plain end pressure pipe.
- Other sizes and widths not listed are readily available. Price on request.

Pipe OD Range = 0.80" (20mm) Pipe Sizes 3 through 6 inch are available in 6 inch Width and are priced the same as the 8 inch Width. See product 3132 for Tapped Outlets.

**HOW TO ORDER:** Specify Model Number, Pipe Size with Letter Code, and Width. EXAMPLE: 12" Cast Iron O.D. 13.20 with 16" Clamp Width. Order 3122 - 12B x 16 . **Part Number:** 312212B160AA-LB .

**NOTE 1:** Clamps will not eliminate axial / lateral movement of pipe. Some type of pipe restraint or anchoring product must be used in these situations.

**NOTE 2:** When clamps are used on HDPE you must use spring washers. See HDPE products section.



**COATING OPTION:** Anti-Seizing/Galling protection. Available for both Alloy and SST application. Inquire with sales for cost and availability