

3132AS ALL STAINLESS DOUBLE PANEL TAPPED REPAIR CLAMP (SMALL OUTLETS)

PANEL & LIFTER BAR: Type 304 (18-8) Stainless Steel per ASTM A240.

GASKET: SBR Chek-O-Seal with multi o-ring sealing ribs from 100% new rubber to ensure performance under varying pressures with superior storage characteristics. Suitable for mild acids, water and salt media with a temperature range of -25°F to +200°F per ASTM D2000 . Other materials available.

ARMOR PLATE: Type 304 (18-8) Stainless Steel per ASTM A240, recessed and bonded to the gasket.

BOLTS & NUTS: Low Alloy Steel per ASTM A325, ASTM A563, and AWWA C111.

LUGS: Type 304 (18-8) Stainless Steel per ASTM A240.

OUTLET: Type 304 (18-8) Stainless Steel per ASTM A276.



Nominal Pipe Size		Pipe OD Range		Width		Outlet Size & Part Number				Price List
Inches	MM	Inches	MM	Inches	MM	3/4 CC	3/4 NPT	1 CC	1 NPT	
3	75	3.49-4.29	89-109	8	200	3132030080CB	3132030080CC	3132030080CD	3132030080CE	\$ 262.80
				10	250	3132030100CB	3132030100CC	3132030100CD	3132030100CE	\$ 328.20
				12	300	3132030120CB	3132030120CC	3132030120CD	3132030120CE	\$ 391.30
				16	400	3132030160CB	3132030160CC	3132030160CD	3132030160CE	\$ 429.90
4A	100	4.44 - 5.24	113-133	8	200	313204A080CB	313204A080CC	313204A080CD	313204A080CE	\$ 294.00
				10	250	313204A100CB	313204A100CC	313204A100CD	313204A100CE	\$ 368.30
				12	300	313204A120CB	313204A120CC	313204A120CD	313204A120CE	\$ 424.30
				16	400	313204A160CB	313204A160CC	313204A160CD	313204A160CE	\$ 494.80
4B	100	4.74 - 5.57	120-141	8	200	313204B080CB	313204B080CC	313204B080CD	313204B080CE	\$ 294.00
				10	250	313204B100CB	313204B100CC	313204B100CD	313204B100CE	\$ 368.30
				12	300	313204B120CB	313204B120CC	313204B120CD	313204B120CE	\$ 424.30
				16	400	313204B160CB	313204B160CC	313204B160CD	313204B160CE	\$ 494.80
6A	150	6.62 - 7.42	168-188	8	200	313206A080CB	313206A080CC	313206A080CD	313206A080CE	\$ 330.30
				10	250	313206A100CB	313206A100CC	313206A100CD	313206A100CE	\$ 406.60
				12	300	313206A120CB	313206A120CC	313206A120CD	313206A120CE	\$ 462.00
				16	400	313206A160CB	313206A160CC	313206A160CD	313206A160CE	\$ 567.80
6B	150	6.84 - 7.64	174-194	8	200	313206B080CB	313206B080CC	313206B080CD	313206B080CE	\$ 333.60
				10	250	313206B100CB	313206B100CC	313206B100CD	313206B100CE	\$ 409.10
				12	300	313206B120CB	313206B120CC	313206B120CD	313206B120CE	\$ 464.60
				16	400	313206B160CB	313206B160CC	313206B160CD	313206B160CE	\$ 571.60
8A	200	8.62 - 9.42	219-239	8	200	313208A080CB	313208A080CC	313208A080CD	313208A080CE	\$ 368.10
				10	250	313208A100CB	313208A100CC	313208A100CD	313208A100CE	\$ 444.40
				12	300	313208A120CB	313208A120CC	313208A120CD	313208A120CE	\$ 507.30
				16	400	313208A160CB	313208A160CC	313208A160CD	313208A160CE	\$ 640.80
8B	200	8.99 - 9.79	228-249	8	200	313208B080CB	313208B080CC	313208B080CD	313208B080CE	\$ 371.00
				10	250	313208B100CB	313208B100CC	313208B100CD	313208B100CE	\$ 446.90
				12	300	313208B120CB	313208B120CC	313208B120CD	313208B120CE	\$ 509.90
				16	400	313208B160CB	313208B160CC	313208B160CD	313208B160CE	\$ 643.40

3132AS ALL STAINLESS DOUBLE PANEL TAPPED REPAIR CLAMP (SMALL OUTLETS)

Nominal Pipe Size		Pipe OD Range		Width		Outlet Size & Part Number				Price List
Inches	MM	Inches	MM	Inches	MM	3/4 CC	3/4 NPT	1 CC	1 NPT	
10A	250	10.75 - 11.55	273-293	8	200	313210A080CB	312310A080CC	313210A080CD	313210A080CE	\$ 467.20
				10	250	313210A100CB	312310A100CC	313210A100CD	313210A100CE	\$ 562.80
				12	300	313210A120CB	313210A120CC	313210A120CD	313210A120CE	\$ 672.30
				16	400	313210A160CB	313210A160CC	313210A160CD	313210A160CE	\$ 781.90
10B	250	11.10 - 11.90	282-302	8	200	313210B080CB	313210B080CC	313210B080CD	313210B080CE	\$ 471.10
				10	250	313210B100CB	313210B100CC	313210B100CD	313210B100CE	\$ 565.30
				12	300	313210B120CB	313210B120CC	313210B120CD	313210B120CE	\$ 674.80
				16	400	313210B160CB	313210B160CC	313210B160CD	313210B160CE	\$ 784.30
10D	250	11.60 - 12.40	295-315	8	200	313210D080CB	313210D080CC	313210D080CD	313210D080CE	\$ 471.10
				10	250	313210D100CB	313210D100CC	313210D100CD	313210D100CE	\$ 565.30
				12	300	313210D120CB	313210D120CC	313210D120CD	313210D120CE	\$ 674.80
				16	400	313210D160CB	313210D160CC	313210D160CD	313210D160CE	\$ 784.30
12A	300	12.75 - 13.55	324-344	8	200	313212A080CB	313212A080CC	313212A080CD	313212A080CE	POA
				10	250	313212A100CB	313212A100CC	313212A100CD	313212A100CE	\$ 635.80
				12	300	313212A120CB	313212A120CC	313212A120CD	313212A120CE	\$ 760.50
				16	400	313212A160CB	313212A160CC	313212A160CD	313212A160CE	\$ 885.10
12B	300	13.20 - 14.00	335-356	8	200	313212B080CB	313212B080CC	313212B080CD	313212B080CE	POA
				10	250	313212B100CB	313212B100CC	313212B100CD	313212B100CE	\$ 638.30
				12	300	313212B120CB	313212B120CC	313212B120CD	313212B120CE	\$ 763.00
				16	400	313212B160CB	313212B160CC	313212B160CD	313212B160CE	\$ 887.60
12D	300	13.65 - 14.45	347-367	8	200	313212D080CB	313212D080CC	313212D080CD	313212D080CE	POA
				10	250	313212D100CB	313212D100CC	313212D100CD	313212D100CE	\$ 638.30
				12	300	313212D120CB	313212D120CC	313212D120CD	313212D120CE	\$ 763.00
				16	400	313212D160CB	313212D160CC	313212D160CD	313212D160CE	\$ 887.60
14A	350	14.38 - 15.13	365-384	8	200	313214A080CB	313214A080CC	313214A080CD	313214A080CE	POA
				10	250	313214A100CB	313214A100CC	313214A100CD	313214A100CE	\$ 819.80
				12	300	313214A120CB	313214A120CC	313214A120CD	313214A120CE	\$ 1,040.60
				16	400	313214A160CB	313214A160CC	313214A160CD	313214A160CE	\$ 1,152.60
14B	350	15.07 - 15.82	383-402	8	200	313214B080CB	313214B080CC	313214B080CD	313214B080CE	POA
				10	250	313214B100CB	313214B100CC	313214B100CD	313214B100CE	\$ 819.80
				12	300	313214B120CB	313214B120CC	313214B120CD	313214B120CE	\$ 1,040.60
				16	400	313214B160CB	313214B160CC	313214B160CD	313214B160CE	\$ 1,152.60
16A	400	15.92 - 16.67	404-423	8	200	313216A080CB	313216A080CC	313216A080CD	313216A080CE	POA
				10	250	313216A100CB	313216A100CC	313216A100CD	313216A100CE	\$ 1,011.80
				12	300	313216A120CB	313216A120CC	313216A120CD	313216A120CE	\$ 1,285.00
				16	400	313216A160CB	313216A160CC	313216A160CD	313216A160CE	\$ 1,394.80
16B	400	16.56 - 17.31	421-440	8	200	313216B080CB	313216B080CC	313216B080CD	313216B080CE	POA
				10	250	313216B100CB	313216B100CC	313216B100CD	313216B100CE	\$ 1,011.80
				12	300	313216B120CB	313216B120CC	313216B120CD	313216B120CE	\$ 1,285.00
				16	400	313216B160CB	313216B160CC	313216B160CD	313216B160CE	\$ 1,394.80

3132AS ALL STAINLESS DOUBLE PANEL TAPPED REPAIR CLAMP (SMALL OUTLETS)

Nominal Pipe Size		Pipe OD Range		Width		Outlet Size & Part Number				Price List
Inches	MM	Inches	MM	Inches	MM	3/4 CC	3/4 NPT	1 CC	1 NPT	
16C	400	17.15 - 17.90	436-455	8	200	313216C080CB	313216C080CC	313216C080CD	313216C080CE	POA
				10	250	313216C100CB	313216C100CC	313216C100CD	313216C100CE	\$ 1,011.80
				12	300	313216C120CB	313216C120CC	313216C120CD	313216C120CE	\$ 1,285.00
				16	400	313216C160CB	313216C160CC	313216C160CD	313216C160CE	\$ 1,394.80
18A	450	17.82 - 18.57	453-472	8	200	313218A080CB	313218A080CC	313218A080CD	313218A080CE	POA
				10	250	313218A100CB	313218A100CC	313218A100CD	313218A100CE	POA
				12	300	313218A120CB	313218A120CC	313218A120CD	313218A120CE	\$ 1,433.50
				16	400	313218A160CB	313218A160CC	313218A160CD	313218A160CE	\$ 1,555.90
18B	450	18.46 - 19.21	469-488	8	200	313218B080CB	313218B080CC	313218B080CD	313218B080CE	POA
				10	250	313218B100CB	313218B100CC	313218B100CD	313218B100CE	POA
				12	300	313218B120CB	313218B120CC	313218B120CD	313218B120CE	\$ 1,433.50
				16	400	313218B160CB	313218B160CC	313218B160CD	313218B160CE	\$ 1,555.90
18C	450	19.23 - 19.98	488-507	8	200	313218C080CB	313218C080CC	313218C080CD	313218C080CE	POA
				10	250	313218C100CB	313218C100CC	313218C100CD	313218C100CE	POA
				12	300	313218C120CB	313218C120CC	313218C120CD	313218C120CE	\$ 1,433.50
				16	400	313218C160CB	313218C160CC	313218C160CD	313218C160CE	\$ 1,555.90
20A	500	19.90 - 20.65	505-525	8	200	313220A080CB	313220A080CC	313220A080CD	313220A080CE	POA
				10	250	313220A100CB	313220A100CC	313220A100CD	313220A100CE	POA
				12	300	313220A120CB	313220A120CC	313220A120CD	313220A120CE	POA
				16	400	313220A160CB	313220A160CC	313220A160CD	313220A160CE	\$ 2,447.20
20B	500	20.70 - 21.45	526-545	8	200	313220B080CB	313220B080CC	313220B080CD	313220B080CE	POA
				10	250	313220B100CB	313220B100CC	313220B100CD	313220B100CE	POA
				12	300	313220B120CB	313220B120CC	313220B120CD	313220B120CE	POA
				16	400	313220B160CB	313220B160CC	313220B160CD	313220B160CE	\$ 2,447.20
22A	550	21.52 - 22.27	547-566	8	200	313222A080CB	313222A080CC	313222A080CD	313222A080CE	POA
				10	250	313222A100CB	313222A100CC	313222A100CD	313222A100CE	POA
				12	300	313222A120CB	313222A120CC	313222A120CD	313222A120CE	POA
				16	400	313222A160CB	313222A160CC	313222A160CD	313222A160CE	\$ 2,517.70
22B	550	22.12 - 22.87	562-581	8	200	313222B080CB	313222B080CC	313222B080CD	313222B080CE	POA
				10	250	313222B100CB	313222B100CC	313222B100CD	313222B100CE	POA
				12	300	313222B120CB	313222B120CC	313222B120CD	313222B120CE	POA
				16	400	313222B160CB	313222B160CC	313222B160CD	313222B160CE	\$ 2,517.70
22C	550	22.90 - 23.65	582-601	8	200	313222C080CB	313222C080CC	313222C080CD	313222C080CE	POA
				10	250	313222C100CB	313222C100CC	313222C100CD	313222C100CE	POA
				12	300	313222C120CB	313222C120CC	313222C120CD	313222C120CE	POA
				16	400	313222C160CB	313222C160CC	313222C160CD	313222C160CE	\$ 2,517.70

HOW TO ORDER: Choose nominal pipe size, width and outlet size with thread configuration. EXAMPLE: 8" DIP O.D. 9.05, 12" wide with a 1" CC outlet. Order 3132AS- 8B x 12 X 1 CC. **Part Number:** 313208B120CD.

3132AS ALL STAINLESS DOUBLE PANEL TAPPED REPAIR CLAMP (LARGE OUTLETS)

PANEL & LIFTER BAR: Type 304 (18-8) Stainless Steel per ASTM A240.

GASKET: SBR Chek-O-Seal with multi o-ring sealing ribs from 100% new rubber to ensure performance under varying pressures with superior storage characteristics. Suitable for mild acids, water and salt media with a temperature range of -25°F to +200°F per ASTM D2000 . Other materials available.

ARMOR PLATE: Type 304 (18-8) Stainless Steel per ASTM A240, recessed and bonded to the gasket.

BOLTS & NUTS: Low Alloy Steel per ASTM A325, ASTM A563, and AWWA C111.

LUGS: Type 304 (18-8) Stainless Steel per ASTM A240.

OUTLET: Type 304 (18-8) Stainless Steel per ASTM A276.



Nominal Pipe Size		Pipe OD Range		Width		Outlet Size & Part Number				Price List
Inches	MM	Inches	MM	Inches	MM	1 1/4" NPT	1 1/2" NPT	1 1/4" CC	1 1/2" CC	
4A	100	4.44 - 5.24	113-133	8	200	313204A080CG	313204A080CI	313204A080CF	313204A080CH	\$ 315.30
				10	250	313204A100CG	313204A100CI	313204A100CF	313204A100CH	\$ 389.70
				12	300	313204A120CG	313204A120CI	313204A120CF	313204A120CH	\$ 445.60
				16	400	313204A160CG	313204A160CI	313204A160CF	313204A160CH	\$ 516.10
4B	100	4.74 - 5.57	120-141	8	200	313204B080CG	313204B080CI	313204B080CF	313204B080CH	\$ 315.30
				10	250	313204B100CG	313204B100CI	313204B100CF	313204B100CH	\$ 389.70
				12	300	313204B120CG	313204B120CI	313204B120CF	313204B120CH	\$ 445.60
				16	400	313204B160CG	313204B160CI	313204B160CF	313204B160CH	\$ 516.10
6A	150	6.62 - 7.42	168-188	8	200	313206A080CG	313206A080CI	313206A080CF	313206A080CH	\$ 352.00
				10	250	313206A100CG	313206A100CI	313206A100CF	313206A100CH	\$ 428.00
				12	300	313206A120CG	313206A120CI	313206A120CF	313206A120CH	\$ 483.40
				16	400	313206A160CG	313206A160CI	313206A160CF	313206A160CH	\$ 589.20
6B	150	6.84 - 7.64	174-194	8	200	313206B080CG	313206B080CI	313206B080CF	313206B080CH	\$ 354.60
				10	250	313206B100CG	313206B100CI	313206B100CF	313206B100CH	\$ 430.50
				12	300	313206B120CG	313206B120CI	313206B120CF	313206B120CH	\$ 485.90
				16	400	313206B160CG	313206B160CI	313206B160CF	313206B160CH	\$ 592.90
8A	200	8.62 - 9.42	219-239	8	200	313208A080CG	313208A080CI	313208A080CF	313208A080CH	\$ 390.00
				10	250	313208A100CG	313208A100CI	313208A100CF	313208A100CH	\$ 465.70
				12	300	313208A120CG	313208A120CI	313208A120CF	313208A120CH	\$ 528.70
				16	400	313208A160CG	313208A160CI	313208A160CF	313208A160CH	\$ 662.20
8B	200	8.99 - 9.79	228-249	8	200	313208B080CG	313208B080CI	313208B080CF	313208B080CH	\$ 392.00
				10	250	313208B100CG	313208B100CI	313208B100CF	313208B100CH	\$ 468.30
				12	300	313208B120CG	313208B120CI	313208B120CF	313208B120CH	\$ 531.20
				16	400	313208B160CG	313208B160CI	313208B160CF	313208B160CH	\$ 664.70
10A	250	10.75 - 11.55	273-293	8	200	313210A080CG	313210A080CI	313210A080CF	313210A080CH	\$ 488.90
				10	250	313210A100CG	313210A100CI	313210A100CF	313210A100CH	\$ 584.10
				12	300	313210A120CG	313210A120CI	313210A120CF	313210A120CH	\$ 693.70
				16	400	313210A160CG	313210A160CI	313210A160CF	313210A160CH	\$ 803.20
10B	250	11.10 - 11.90	282-302	8	200	313210B080CG	313210B080CI	313210B080CF	313210B080CH	\$ 493.00
				10	250	313210B100CG	313210B100CI	313210B100CF	313210B100CH	\$ 586.70
				12	300	313210B120CG	313210B120CI	313210B120CF	313210B120CH	\$ 696.20
				16	400	313210B160CG	313210B160CI	313210B160CF	313210B160CH	\$ 806.00

**3132AS ALL STAINLESS DOUBLE PANEL TAPPED REPAIR CLAMP
(LARGE OUTLETS)**

Nominal Pipe Size		Pipe OD Range		Width		Outlet Size & Part Number				Price List
Inches	MM	Inches	MM	Inches	MM	1 1/4" NPT	1 1/2" NPT	1 1/4" CC	1 1/2" CC	
10D	250	11.60 - 12.40	295-315	8	200	313210D080CG	313210D080CI	313210D080CF	313210D080CH	\$ 806.00
				10	250	313210D100CG	313210D100CI	313210D100CF	313210D100CH	\$ 586.70
				12	300	313210D120CG	313210D120CI	313210D120CF	313210D120CH	\$ 696.20
				16	400	313210D160CG	313210D160CI	313210D160CF	313210D160CH	\$ 806.00
12A	300	12.75 - 13.55	324-344	8	200	313212A080CG	313212A080CI	313212A080CF	313212A080CH	POA
				10	250	313212A100CG	313212A100CI	313212A100CF	313212A100CH	\$ 657.20
				12	300	313212A120CG	313212A120CI	313212A120CF	313212A120CH	\$ 781.80
				16	400	313212A160CG	313212A160CI	313212A160CF	313212A160CH	\$ 906.50
12B	300	13.20 - 14.00	335-356	8	200	313212B080CG	313212B080CI	313212B080CF	313212B080CH	POA
				10	250	313212B100CG	313212B100CI	313212B100CF	313212B100CH	\$ 659.70
				12	300	313212B120CG	313212B120CI	313212B120CF	313212B120CH	\$ 784.30
				16	400	313212B160CG	313212B160CI	313212B160CF	313212B160CH	\$ 909.00
12D	300	13.65 - 14.45	347-367	8	200	313212D080CG	313212D080CI	313212D080CF	313212D080CH	POA
				10	250	313212D100CG	313212D100CI	313212D100CF	313212D100CH	\$ 659.70
				12	300	313212D120CG	313212D120CI	313212D120CF	313212D120CH	\$ 784.30
				16	400	313212D160CG	313212D160CI	313212D160CF	313212D160CH	\$ 909.00
14A	350	14.38 - 15.13	365-384	8	200	313214A080CG	313214A080CI	313214A080CF	313214A080CH	POA
				10	250	313214A100CG	313214A100CI	313214A100CF	313214A100CH	\$ 904.50
				12	300	313214A120CG	313214A120CI	313214A120CF	313214A120CH	\$ 1,125.30
				16	400	313214A160CG	313214A160CI	313214A160CF	313214A160CH	\$ 1,237.30
14B	350	15.07 - 15.82	383-402	8	200	313214B080CG	313214B080CI	313214B080CF	313214B080CH	POA
				10	250	313214B100CG	313214B100CI	313214B100CF	313214B100CH	\$ 819.80
				12	300	313214B120CG	313214B120CI	313214B120CF	313214B120CH	\$ 1,040.60
				16	400	313214B160CG	313214B160CI	313214B160CF	313214B160CH	\$ 1,152.60
16A	400	15.92 - 16.67	404-423	8	200	313216A080CG	313216A080CI	313216A080CF	313216A080CH	POA
				10	250	313216A100CG	313216A100CI	313216A100CF	313216A100CH	\$ 1,078.50
				12	300	313216A120CG	313216A120CI	313216A120CF	313216A120CH	\$ 1,369.70
				16	400	313216A160CG	313216A160CI	313216A160CF	313216A160CH	\$ 1,479.50
16B	400	16.56 - 17.31	421-440	8	200	313216B080CG	313216B080CI	313216B080CF	313216B080CH	POA
				10	250	313216B100CG	313216B100CI	313216B100CF	313216B100CH	\$ 1,011.80
				12	300	313216B120CG	313216B120CI	313216B120CF	313216B120CH	\$ 1,285.00
				16	400	313216B160CG	313216B160CI	313216B160CF	313216B160CH	\$ 1,394.80
16C	400	17.15 - 17.90	436-455	8	200	313216C080CG	313216C080CI	313216C080CF	313216C080CH	POA
				10	250	313216C100CG	313216C100CI	313216C100CF	313216C100CH	\$ 1,078.50
				12	300	313216C120CG	313216C120CI	313216C120CF	313216C120CH	\$ 1,369.70
				16	400	313216C160CG	313216C160CI	313216C160CF	313216C160CH	\$ 1,479.50
18A	450	17.82 - 18.57	453-472	8	200	313218A080CG	313218A080CI	313218A080CF	313218A080CH	POA
				10	250	313218A100CG	313218A100CI	313218A100CF	313218A100CH	POA
				12	300	313218A120CG	313218A120CI	313218A120CF	313218A120CH	\$ 1,401.70
				16	400	313218A160CG	313218A160CI	313218A160CF	313218A160CH	\$ 1,555.90

3132AS ALL STAINLESS DOUBLE PANEL TAPPED REPAIR CLAMP (LARGE OUTLETS)

Nominal Pipe Size		Pipe OD Range		Width		Outlet Size & Part Number				Price List
Inches	MM	Inches	MM	Inches	MM	1 1/4" NPT	1 1/2" NPT	1 1/4" CC	1 1/2" CC	
18B	450	18.46 - 19.21	469-488	8	200	313218B080CG	313218B080CI	313218B080CF	313218B080CH	POA
				10	250	313218B100CG	313218B100CI	313218B100CF	313218B100CH	POA
				12	300	313218B120CG	313218B120CI	313218B120CF	313218B120CH	\$ 1,478.00
				16	400	313218B160CG	313218B160CI	313218B160CF	313218B160CH	\$ 1,640.60
18C	450	19.23 - 19.98	488-507	8	200	313218C080CG	313218C080CI	313218C080CF	313218C080CH	POA
				10	250	313218C100CG	313218C100CI	313218C100CF	313218C100CH	POA
				12	300	313218C120CG	313218C120CI	313218C120CF	313218C120CH	\$ 1,478.00
				16	400	313218C160CG	313218C160CI	313218C160CF	313218C160CH	\$ 1,640.60
20A	500	19.90 - 20.65	505-525	8	200	313220A080CG	313220A080CI	313220A080CF	313220A080CH	POA
				10	250	313220A100CG	313220A100CI	313220A100CF	313220A100CH	POA
				12	300	313220A120CG	313220A120CI	313220A120CF	313220A120CH	POA
				16	400	313220A160CG	313220A160CI	313220A160CF	313220A160CH	\$ 2,531.90
20B	500	20.70 - 21.45	526-545	8	200	313220B080CG	313220B080CI	313220B080CF	313220B080CH	POA
				10	250	313220B100CG	313220B100CI	313220B100CF	313220B100CH	POA
				12	300	313220B120CG	313220B120CI	313220B120CF	313220B120CH	POA
				16	400	313220B160CG	313220B160CI	313220B160CF	313220B160CH	\$ 2,531.90
22A	550	21.52 - 22.27	547-566	8	200	313222A080CG	313222A080CI	313222A080CF	313222A080CH	POA
				10	250	313222A100CG	313222A100CI	313222A100CF	313222A100CH	POA
				12	300	313222A120CG	313222A120CI	313222A120CF	313222A120CH	POA
				16	400	313222A160CG	313222A160CI	313222A160CF	313222A160CH	\$ 2,602.40
22B	550	22.12 - 22.87	562-581	8	200	313222B080CG	313222B080CI	313222B080CF	313222B080CH	POA
				10	250	313222B100CG	313222B100CI	313222B100CF	313222B100CH	POA
				12	300	313222B120CG	313222B120CI	313222B120CF	313222B120CH	POA
				16	400	313222B160CG	313222B160CI	313222B160CF	313222B160CH	\$ 2,602.40
22C	550	22.90 - 23.65	582-601	8	200	313222C080CG	313222C080CI	313222C080CF	313222C080CH	POA
				10	250	313222C100CG	313222C100CI	313222C100CF	313222C100CH	POA
				12	300	313222C120CG	313222C120CI	313222C120CF	313222C120CH	POA
				16	400	313222C160CG	313222C160CI	313222C160CF	313222C160CH	\$ 2,602.40

HOW TO ORDER: Choose nominal pipe size, width and outlet size with thread configuration. EXAMPLE: 8" DIP O.D. 9.05, 12" wide with a 2" NPT outlet. Order 3132AS- 8B x 12 X 2 NPT. **Part Number:** 313208B120CK.

3132AS ALL STAINLESS DOUBLE PANEL TAPPED REPAIR CLAMP (LARGE OUTLETS)

PANEL & LIFTER BAR: Type 304 (18-8) Stainless Steel per ASTM A240.

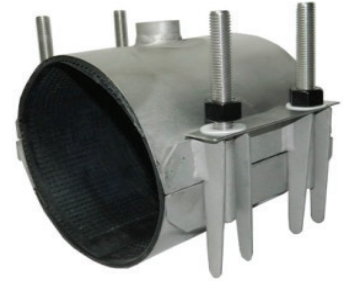
GASKET: SBR Chek-O-Seal with multi o-ring sealing ribs from 100% new rubber to ensure performance under varying pressures with superior storage characteristics. Suitable for mild acids, water and salt media with a temperature range of -25°F to +200°F per ASTM D2000 . Other materials available.

ARMOR PLATE: Type 304 (18-8) Stainless Steel per ASTM A240, recessed and bonded to the gasket.

BOLTS & NUTS: Low Alloy Steel per ASTM A325, ASTM A563, and AWWA C111.

LUGS: Type 304 (18-8) Stainless Steel per ASTM A240.

OUTLET: Type 304 (18-8) Stainless Steel per ASTM A276.



Nominal Pipe Size		Pipe OD Range		Width		Outlet Size & Part Number		Price List
Inches	MM	Inches	MM	Inches	MM	2" CC	2" NPT	
4A	100	4.44 - 5.24	113-133	8	200	313204A080CJ	313204A080CK	\$ 335.50
				10	250	313204A100CJ	313204A100CK	\$ 410.00
				12	300	313204A120CJ	313204A120CK	\$ 466.00
				16	400	313204A160CJ	313204A160CK	\$ 536.40
4B	100	4.74 - 5.57	120-141	8	200	313204B080CJ	313204B080CK	\$ 335.50
				10	250	313204B100CJ	313204B100CK	\$ 410.00
				12	300	313204B120CJ	313204B120CK	\$ 466.00
				16	400	313204B160CJ	313204B160CK	\$ 536.40
6A	150	6.62 - 7.42	168-188	8	200	313206A080CJ	313206A080CK	\$ 372.00
				10	250	313206A100CJ	313206A100CK	\$ 448.30
				12	300	313206A120CJ	313206A120CK	\$ 503.70
				16	400	313206A160CJ	313206A160CK	\$ 609.50
6B	150	6.84 - 7.64	174-194	8	200	313206B080CJ	313206B080CK	\$ 375.00
				10	250	313206B100CJ	313206B100CK	\$ 450.80
				12	300	313206B120CJ	313206B120CK	\$ 506.20
				16	400	313206B160CJ	313206B160CK	\$ 613.30
8A	200	8.62 - 9.42	219-239	8	200	313208A080CJ	313208A080CK	\$ 410.00
				10	250	313208A100CJ	313208A100CK	\$ 486.00
				12	300	313208A120CJ	313208A120CK	\$ 549.00
				16	400	313208A160CJ	313208A160CK	\$ 682.50
8B	200	8.99 - 9.79	228-249	8	200	313208B080CJ	313208B080CK	\$ 413.00
				10	250	313208B100CJ	313208B100CK	\$ 488.60
				12	300	313208B120CJ	313208B120CK	\$ 551.60
				16	400	313208B160CJ	313208B160CK	\$ 685.00
10A	250	10.75 - 11.55	273-293	8	200	313210A080CJ	313210A080CK	\$ 510.90
				10	250	313210A100CJ	313210A100CK	\$ 604.40
				12	300	313210A120CJ	313210A120CK	\$ 714.00
				16	400	313210A160CJ	313210A160CK	\$ 773.80
10B	250	11.10 - 11.90	282-302	8	200	313210B080CJ	313210B080CK	\$ 510.10
				10	250	313210B100CJ	313210B100CK	\$ 607.00
				12	300	313210B120CJ	313210B120CK	\$ 716.50
				16	400	313210B160CJ	313210B160CK	\$ 827.00

3132AS ALL STAINLESS DOUBLE PANEL TAPPED REPAIR CLAMP (LARGE OUTLETS)

Nominal Pipe Size		Pipe OD Range		Width		Outlet Size & Part Number		Price List
Inches	MM	Inches	MM	Inches	MM	2" CC	2" NPT	
10D	250	11.60 - 12.40	295-315	8	200	313210D080CJ	313210D080CK	\$ 510.10
				10	250	313210D100CJ	313210D100CK	\$ 607.00
				12	300	313210D120CJ	313210D120CK	\$ 716.50
				16	400	313210D160CJ	313210D160CK	\$ 827.00
12A	300	12.75 - 13.55	324-344	8	200	313212A080CJ	313212A080CK	POA
				10	250	313212A100CJ	313212A100CK	\$ 677.50
				12	300	313212A120CJ	313212A120CK	\$ 802.10
				16	400	313212A160CJ	313212A160CK	\$ 926.80
12B	300	13.20 - 14.00	335-356	8	200	313212B080CJ	313212B080CK	POA
				10	250	313212B100CJ	313212B100CK	\$ 680.00
				12	300	313212B120CJ	313212B120CK	\$ 804.60
				16	400	313212B160CJ	313212B160CK	\$ 929.30
12D	300	13.65 - 14.45	347-367	8	200	313212D080CJ	313212D080CK	POA
				10	250	313212D100CJ	313212D100CK	\$ 680.00
				12	300	313212D120CJ	313212D120CK	\$ 804.60
				16	400	313212D160CJ	313212D160CK	\$ 929.30
14A	350	14.38 - 15.13	365-384	8	200	313214A080CJ	313214A080CK	POA
				10	250	313214A100CJ	313214A100CK	\$ 924.60
				12	300	313214A120CJ	313214A120CK	\$ 1,145.40
				16	400	313214A160CJ	313214A160CK	\$ 1,257.40
14B	350	15.07 - 15.82	383-402	8	200	313214B080CJ	313214B080CK	POA
				10	250	313214B100CJ	313214B100CK	\$ 819.80
				12	300	313214B120CJ	313214B120CK	\$ 1,040.60
				16	400	313214B160CJ	313214B160CK	\$ 1,152.60
16A	400	15.92 - 16.67	404-423	8	200	313216A080CJ	313216A080CK	POA
				10	250	313216A100CJ	313216A100CK	\$ 1,094.30
				12	300	313216A120CJ	313216A120CK	\$ 1,389.80
				16	400	313216A160CJ	313216A160CK	\$ 1,499.60
16B	400	16.56 - 17.31	421-440	8	200	313216B080CJ	313216B080CK	POA
				10	250	313216B100CJ	313216B100CK	\$ 1,011.80
				12	300	313216B120CJ	313216B120CK	\$ 1,285.00
				16	400	313216B160CJ	313216B160CK	\$ 1,394.80
16C	400	17.15 - 17.90	436-455	8	200	313216C080CJ	313216C080CK	POA
				10	250	313216C100CJ	313216C100CK	\$ 1,094.30
				12	300	313216C120CJ	313216C120CK	\$ 1,389.80
				16	400	313216C160CJ	313216C160CK	\$ 1,499.60
18A	450	17.82 - 18.57	453-472	8	200	313218A080CJ	313218A080CK	POA
				10	250	313218A100CJ	313218A100CK	POA
				12	300	313218A120CJ	313218A120CK	\$ 1,401.70
				16	400	313218A160CJ	313218A160CK	\$ 1,555.90

3132AS ALL STAINLESS DOUBLE PANEL TAPPED REPAIR CLAMP (LARGE OUTLETS)

Nominal Pipe Size		Pipe OD Range		Width		Outlet Size & Part Number		Price List
Inches	MM	Inches	MM	Inches	MM	2" CC	2" NPT	
18B	450	18.46 - 19.21	469-488	8	200	312218B080CJ	313218B080CK	POA
				10	250	312218B100CJ	313218B100CK	POA
				12	300	312218B120CJ	313218B120CK	\$ 1,496.10
				16	400	312218B160CJ	313218B160CK	\$ 1,660.70
18C	450	19.23 - 19.98	488-507	8	200	313218C080CJ	313218C080CK	POA
				10	250	313218C100CJ	313218C100CK	POA
				12	300	313218C120CJ	313218C120CK	\$ 1,496.10
				16	400	313218C160CJ	313218C160CK	\$ 1,660.70
20A	500	19.90 - 20.65	505-525	8	200	313220A080CJ	313220A080CK	POA
				10	250	313220A100CJ	313220A100CK	POA
				12	300	313220A120CJ	313220A120CK	POA
				16	400	313220A160CJ	313220A160CK	\$ 2,552.00
20B	500	20.70 - 21.45	526-545	8	200	313220B080CJ	313220B080CK	POA
				10	250	313220B100CJ	313220B100CK	POA
				12	300	313220B120CJ	313220B120CK	POA
				16	400	313220B160CJ	313220B160CK	\$ 2,552.00
22A	550	21.52 - 22.27	547-566	8	200	313222A080CJ	313222A080CK	POA
				10	250	313222A100CJ	313222A100CK	POA
				12	300	313222A120CJ	313222A120CK	POA
				16	400	313222A160CJ	313222A160CK	\$ 2,622.50
22B	550	22.12 - 22.87	562-581	8	200	313222B080CJ	313222B080CK	POA
				10	250	313222B100CJ	313222B100CK	POA
				12	300	313222B120CJ	313222B120CK	POA
				16	400	313222B160CJ	313222B160CK	\$ 2,622.50
22C	550	22.90 - 23.65	582-601	8	200	313222C080CJ	313222C080CK	POA
				10	250	313222C100CJ	313222C100CK	POA
				12	300	313222C120CJ	313222C120CK	POA
				16	400	313222C160CJ	313222C160CK	\$ 2,622.50

HOW TO ORDER: Choose nominal pipe size, width and outlet size with thread configuration. EXAMPLE: 8" DIP O.D. 9.05, 12" wide with a 2" NPT outlet. Order 3132AS- 8B x 12 X 2 NPT. **Part Number:**313208B120CK.



COATING OPTION: Anti-Seizing/Galling protection. Available for both Alloy and SST application. Inquire with sales for cost and availability.