

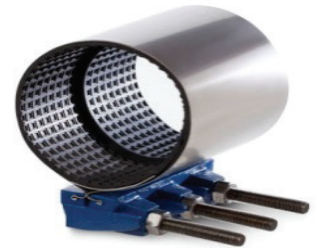
3141 IRON LUGGED COLLAR LEAK

PANEL: Type 304 (18-8) Stainless Steel per ASTM A240.

GASKET: NBR Chek-O-Seal with multi o-ring sealing ribs from 100% new rubber to ensure performance under varying pressures with superior storage characteristics. Suitable for mild acids, water and salt media with a temperature range of -25°F to +200°F per ASTM D2000. Other materials available.

ARMOR PLATE: Type 304 (18-8) Stainless Steel per ASTM A240, recessed and bonded to the gasket. and AWWA C111. Optional Stainless Steel materials available with fusion bonded anti-galling coated nuts.

LUGS: Ductile Iron per ASTM A536.



Nominal Pipe Size		Pipe OD Range		Collar Type	Width		Part Number	Price List	
Custom Sizes and Ranges Available					Inches	MM			
Inches	MM	Inches	MM						
2	50	2.38	61	Sch 40 Collar	6	150	3141020060HA	\$ 94.40	
				SDR 26 Bell			3141020060UA		
				API Line Pipe			3141020060PA		
				EUE Tubing			3141020060RA		
				Sch 40 Collar	8	200	3141020080AH		\$ 112.40
				SDR 26 Bell			3141020080AU		
				API Line Pipe			3141020080AP		
				EUE Tubing			3141020080AR		
2 1/2	65	2.88	73	Sch 40 Collar	6	150	3141025060HA	\$ 98.50	
				SDR 26 Bell			3141025060UA		
				API Line Pipe			3141025060PA		
				EUE Tubing			3141025060RA		
				Sch 40 Collar	8	200	3141025080AH		\$ 116.60
				SDR 26 Bell			3141025080AU		
				API Line Pipe			3141025080AP		
				EUE Tubing			3141025080AR		
3	80	3.50	89	Sch 40 Collar	6	150	3141030060HA	\$ 102.60	
				SDR 26 Bell			3141030060UA		
				API Line Pipe			3141030060PA		
				EUE Tubing			3141030060RA		
				Sch 40 Collar	8	200	3141030080AH		\$ 128.60
				SDR 26 Bell			3141030080AU		
				API Line Pipe			3141030080AP		
				EUE Tubing			3141030080AR		
3 1/2	90	4.00	102	Sch 40 Collar	6	150	3141035060HA	\$ 115.80	
				SDR 26 Bell			3141035060UA		
				API Line Pipe			3141035060PA		
				EUE Tubing			3141035060RA		
				Sch 40 Collar	8	200	3141035080AH		\$ 136.90
				SDR 26 Bell			3141035080AU		
				API Line Pipe			3141035080AP		
				EUE Tubing			3141035080AR		

3141 IRON LUGGED COLLAR LEAK

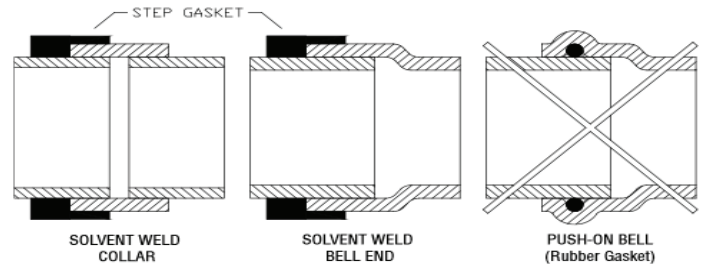
Nominal Pipe Size		Pipe OD Range		Collar Type	Width		Part Number	Price List
Custom Sizes and Ranges Available					Inches	MM		
Inches	MM	Inches	MM					
4	100	4.50	114	Sch 40 Collar	6	150	3141040060HA	\$ 125.90
				SDR 26 Bell			3141040060UA	
				API Line Pipe			3141040060PA	
				EUE Tubing			3141040060RA	
		Sch 40 Collar	8	200	3141040080AH	\$ 144.90		
		SDR 26 Bell			3141040080AU			
		API Line Pipe			3141040080AP			
		EUE Tubing			3141040080AR			
4.13	105	PIP 80 Bell	6	150	3141040060VA	\$ 144.90		
			8	200	3141040080AV			
5	125	5.56	141	Sch 40 Collar	6	150	3141050060HA	\$ 131.40
				SDR 26 Bell			3141050060UA	
				API Line Pipe			3141050060PA	
		Sch 40 Collar	8	200	3141050080AH	\$ 156.20		
		SDR 26 Bell			3141050080AU			
		API Line Pipe			3141050080AP			
6	150	6.63	168	Sch 40 Collar	6	150	3141060060HA	\$ 142.80
				SDR 26 Bell			3141060060UA	
				API Line Pipe			3141060060PA	
		Sch 40 Collar	8	200	3141060080AH	\$ 178.70		
		SDR 26 Bell			3141060060AU			
		API Line Pipe			3141060080AP			
6.14	156	PIP 80 Bell	6	150	3141060060VA	\$ 178.70		
			8	200	3141060080AV			
8	200	8.63	219	Sch 40 Collar	6	150	3141080060HA	\$ 158.90
				SDR 26 Bell			3141080060UA	
		8.14	207	Sch 40 Collar	8	200	3141080080AH	\$ 199.40
							SDR 26 Bell	
				PIP 80 Bell	6	150	3141080060VA	
							8	
10	250	10.75	273	Sch 40 Collar	6	150	3141100060HA	\$ 186.30
				SDR 26 Bell			3141100060UA	
				Sch 40 Collar			8	
		SDR 26 Bell	3141100080AU					
		10.20	259	PIP 80 Bell	6	150		3141100060VA
					8	200	3141100080AV	

3141 IRON LUGGED COLLAR LEAK

Nominal Pipe Size		Pipe OD Range		Collar Type	Width		Part Number	Price List
Custom Sizes and Ranges Available					Inches	MM		
Inches	MM	Inches	MM					
12	300	12.75	324	Sch 40 Collar	6	150	3141120060HA	\$ 218.00
				SDR 26 Bell			3141120060UA	
				Sch 40 Collar	8	200	3141120080AH	\$ 267.80
				SDR 26 Bell			3141120080AU	
		12.24	311	PIP 80 Bell	6	150	3141120060VA	
					8	200	3141120080AV	
15	375	15.30	389	PIP 80 Bell	6"	150	3141150060VA	\$ 255.20
					8"	200	3141150080AV	\$ 353.60

Sch = Schedule API = American Petroleum Institute EUE = External Upset End - SDR = Standard Dimension Ratio

PowerSeal Collar Leak Repair Clamps provide a simple and permanent repair for leaking Solvent Weld PVC Bells and Collars as well as threaded Steel Pipe Collars. Since Collar Leak Clamps are designed to seal on both the outside diameter of the pipe and the leaking collar or bell, it is important that the proper clamp is ordered. These repair clamps are not recommended for leaking Push- On-Joint (gasketed) Bells.



"HOW TO ORDER: Specify Model Number, Pipe Size with Collar Type, and Width. EXAMPLE: 4" Steel O.D. 450 with 6" wide Schedule 40 Collar. Order 3141 - 4" Sch 40 x 6. **Part Number:** 3141040060HA .