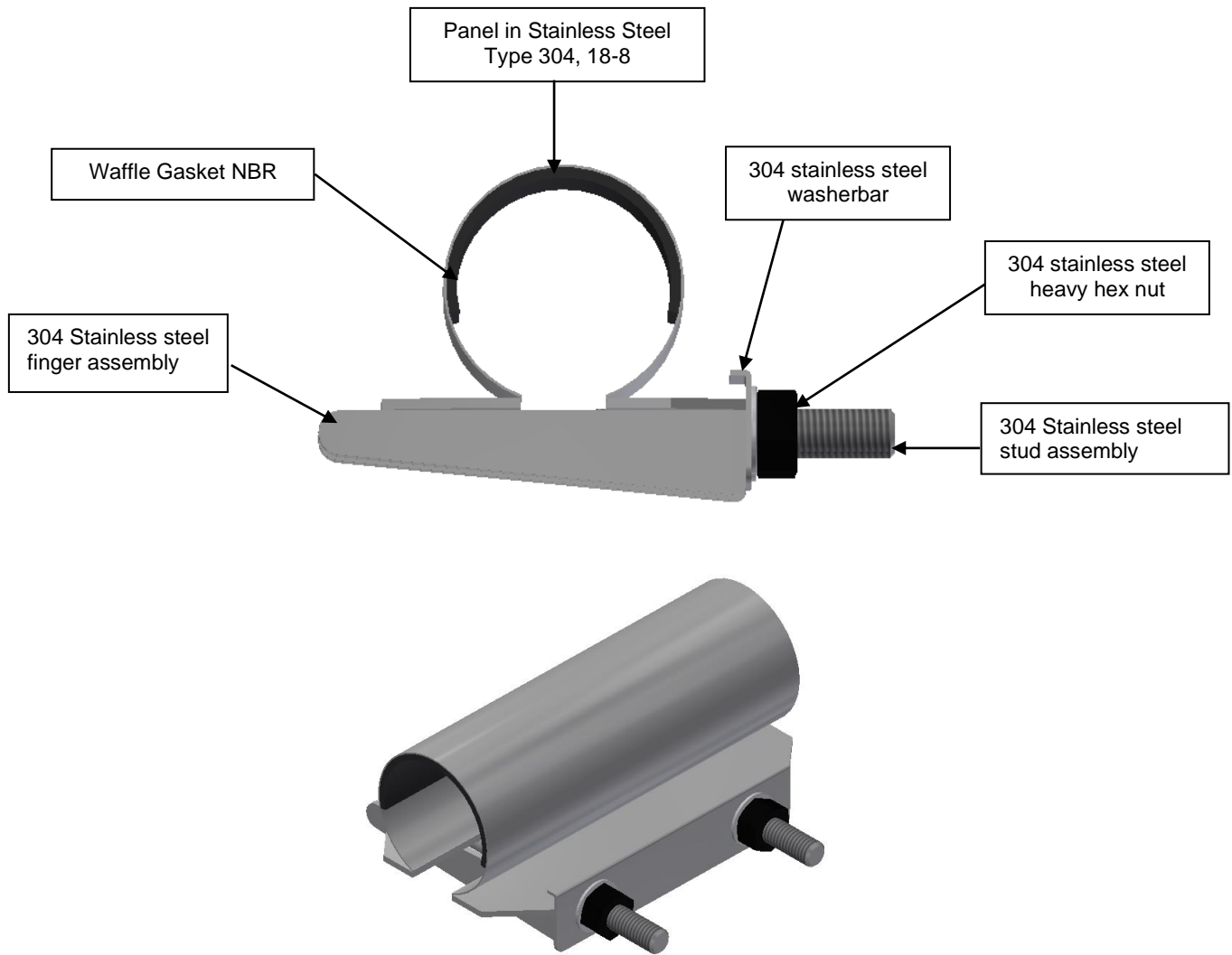


### Features and Benefits

1. Materials do not compromise the integrity of the pipeline.
2. Due to stainless steel panel construction, clamps can be manufactured in range to fit any pipe diameter.
3. Gasket design makes sealing on pitted or corroded pipe possible and lessens bolt torque required to attain leak stoppage.
4. Heavy hex nut with fusion bonded coating to prevent seizing and galling.
5. Lifter bar acts as bearing surface for nuts, special design lip holds position while tightening.
6. Plastic washers reduce friction between washerbar and nuts
7. Long life capability due to totally 304/316 stainless design.
8. Captive bolt design makes installation easy and eliminates loose pieces in the field.





### *Scope*

The intent of the specification is to receive ½” – 12” diameter all stainless-steel patch clamp capable of repairing leaks in IPS, CTS and other small diameter pipes of various materials. The clamp furnished shall be equivalent to Models 3151AS-W, as manufactured by PowerSeal Pipeline Products Corporation.

### *Design and Material Specification*

- The patch clamp shall meet or exceed all material specifications as listed below:
  1. The exterior band of the patch clamp shall be type 304 (18-8) stainless steel.
  2. The patch clamp shall have a waffle type gasket permanently attached to the panel at the factory.

The waffle gasket shall be in NBR. It shall be free from porous areas, foreign material, and visible defects, all made from 100% new rubber; able to work on temperatures of -25 to +248°F.
  3. There shall be no paper or plastic adhesive labels attached to the patch clamp, any information appearing on the clamps shall be stenciled.

| <b>Material Specifications</b> |                          |                   |
|--------------------------------|--------------------------|-------------------|
| <b>Part Name</b>               | <b>Material</b>          | <b>Mat. specs</b> |
| Panel                          | Stainless Steel type 304 | ASTM A240         |
| Washerbar                      | Stainless Steel type 304 | ASTM A240         |
| Bolts                          | Stainless Steel type 304 | ASTM A193         |
| Nuts                           | Stainless Steel type 304 | ASTM A194         |
| Waffle Gasket                  | NBR                      | ASTM D2000        |
| Washer                         | Delrin                   | ASTM D6778        |