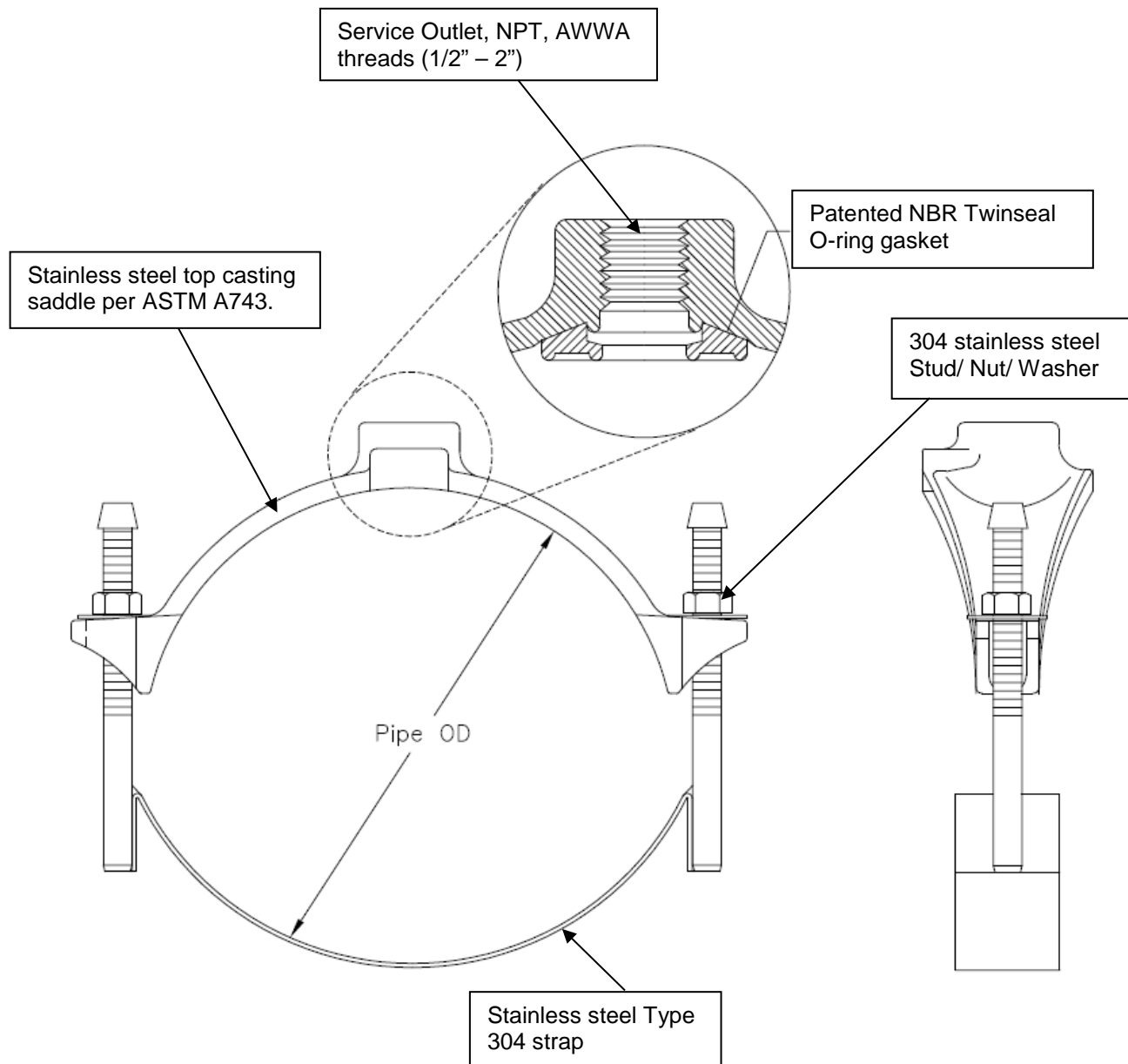


### Features and Benefits

1. Materials do not compromise the integrity of the pipeline.
2. Stud bolts MIG welded to straps, Heavy hex nuts with fusion bonded coating to prevent seizing and galling.
3. Saddles are available with NPT, or AWWA (CC) tapped outlets 1/2" - 2"
4. NBR O-ring gasket design incorporating both hydrostatic and mechanical forces to produce a dynamic seal.



### *Scope*

The intent of the specification is to receive a 3” – 14” diameter stainless steel saddle with single stainless steel straps. The saddle furnished shall be equivalent to models 3415AS as manufactured by PowerSeal Pipeline Products Corporation.

### *Design and Material Specification*

The stainless steel saddle shall meet or exceed all material specifications as listed below:

1. The top casting of the saddle shall be cast stainless steel as per ASTM A743.
2. The saddle shall have an O-ring gasket permanently attached to the casting at the factory. The O-ring gasket shall be the in NBR. It shall be free from porous areas, foreign material, and visible defects, all made from 100% new rubber. The NBR resists temperatures of -25 to +248°F.
3. The MIG welded strap shall be stainless steel type 304. 5/8” stainless steel 304 stud bolts shall be welded to the straps and passivated to return the corrosive resistance.
4. The (AWWA or NPT) threaded outlet shall be individually CNC machined and inspected at the factory.
5. There shall be no paper or plastic adhesive labels attached to the saddle, any information appearing on the saddle shall be ink stenciled.

<b>Material Specifications</b>		
<b>Part Name</b>	<b>Material</b>	<b>Mat. specs</b>
Saddle Top	Stainless Steel 18-8	ASTM A743
Strap	Stainless Steel Type 304	ASTM A240
Nuts & Washers	Stainless Steel Type 304	ASTM A193
O-ring Gasket	NBR	ASTM D2000

Model 3415AS Stainless Steel Saddle  
 Certified to NSF/ANSI-61



## Model 3415 AS



Pipe Size		Pipe OD Range		Strap width in
in.	mm.	in.	mm.	
<b>3 - 4</b>	80 - 100	3.74 - 4.55	95 - 116	2" for all sizes
<b>4 - 5</b>	100 - 125	4.74 - 5.63	120 - 143	
<b>5 - 6</b>	125 - 150	5.94 - 6.70	151 - 170	
<b>6</b>	150	6.84 - 7.60	174 - 193	
<b>6C</b>	150	6.63 - 6.90	168 - 175	
<b>6 - 8</b>	150 - 200	7.69 - 8.72	195 - 222	
<b>8A</b>	200	8.63 - 9.05	219 - 229	
<b>8 - 10</b>	200 - 250	8.54 - 10.10	217 - 257	
<b>10 - 12</b>	250 - 300	10.64 - 12.12	270 - 308	
<b>12 - 14</b>	300 - 350	12.62 - 14.32	321 - 364	

