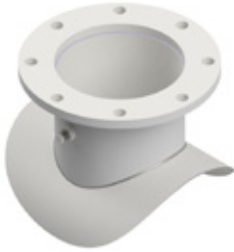


3428 POWERSEAL TAPPING CONNECTIONS (FIELD WELD)

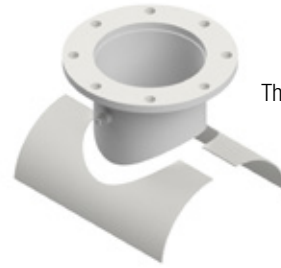
Weld-on outlets are reliable, fast and affordable with PS Field Weld connections.

Complete sleeves, partial sleeves, and outlets are available for steel pipe sizes 6" and above with size on size and reducing outlets. Other configurations of this design are available.

3428D
Hat flange field
weld outlet

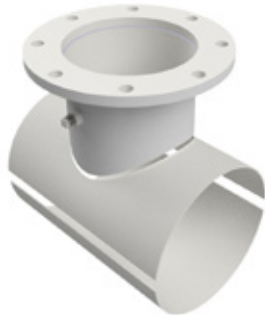


3428C
Flanged nozzle
field weld outlet

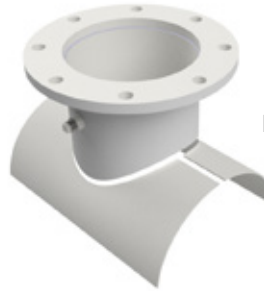


3428B
Three piece field
weld saddle

3428E
Field weld tapping
sleeve



3428A
Field weld outlet



3431 STAINLESS STEEL TAPPING SLEEVE

(FOR REINFORCED CONCRETE PIPE)

BODY AND OUTLET: Type 304 Stainless Steel per ASTM A240

FLANGE: Type 304 Stainless Steel per ASTM A240, ANSI Class 150 is standard, machined to be compatible with MSS-SSP 60

STRAPS: Type 304 Stainless Steel per ASTM A240, and Type 304 Stainless Steel Studs per ASTM A194

NUTS: Type 304 Stainless Steel per ASTM A194

OUTLETGASKET: SBR produced from 100% new rubber per ASTM D2000. Suitable for water and sewer applications with a temperature range of -40° to +200° F.

GROUT PIPES: Type 304 Stainless Steel per ASTM A312

GROUT SEAL: One inch square high density foam.

3431
Concrete Steel
Tapping Sleeve

