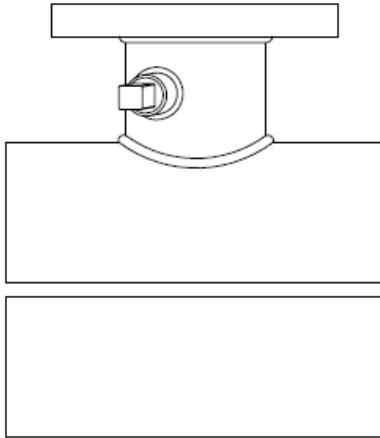


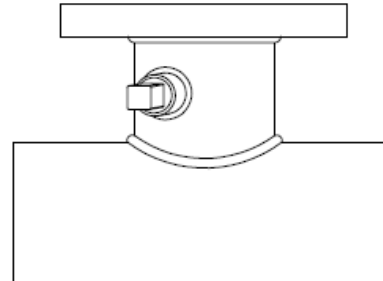
Scope

The intent of this specification is to receive a field weldable tapping connection. The tapping connection furnished shall be equivalent to Models 3428A, 3428B, 3428C, 3428D, & 3428E Field weldable tapping connections as manufactured by PowerSeal Pipeline Products Corporation.

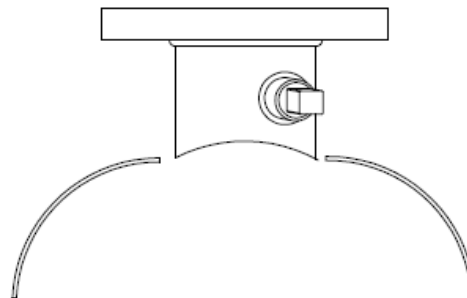
3428E Field Weld Tapping Sleeve



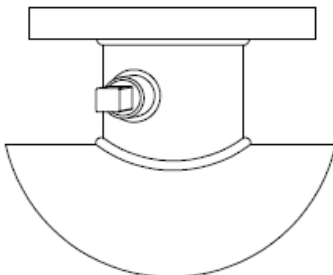
3428A Field Weld Outlet



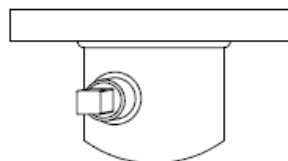
3428B Three Piece Field Weld Saddle



3428D Hat Flange Weld Outlet



3428C Flanged Nozzle Field Weld Outlet





Features and Benefits

1. The complete Tapping Connection is constructed of Carbon Steel.
2. The branch shall be a minimum of 3/8" larger diameter than nominal to allow the use of a full size cutter.

Design and Material Specification

1. The tapping connection shall meet or exceed all material specifications as listed below.
2. Branch to flange and branch to shell connections are double welded. Outer structural weld GMAW (mig) and inner fusion weld GTAW (tig).
3. There shall be no paper or plastic adhesive labels attached to the tapping sleeve, any information appearing on the sleeve shall be stenciled.

Material Specifications		
Part Name	Material	Mat. specs
Flange Outlet	Carbon Steel	AWWA C115
Face Gasket	SBR	AWWA C115AP
Branch	Carbon Steel	ASTM A36
Test Plug	Stainless Steel	ANSI B2.1
Shell	Carbon Steel	ASTM A36

