



701 Pleasant View Drive
Wichita Falls, TX 76306

MODEL 3436AS Termination Sleeve

Installation Guide

1. Measure the Outside Diameter of the pipe and visually inspect the Termination Sleeve to ensure it is of the required range for the installation. Make sure the Termination Sleeve is complete and there are no missing nuts, bolts or washers.

2. Clean the pipe over the entire circumference where the sleeve is to be installed. Be sure that there is no foreign debris (rocks, dirt etc.) on the clamp gasket or pipe. Lubricate the sleeve gasket and pipe with soapy water.

3. Once the main stop is closed, remove the copper tubing for the

corporation stop if still attached. Place the encapsulating section of the sleeve over the corp stop and onto the pipe. Make sure the tapered gaskets are smooth against the pipe.

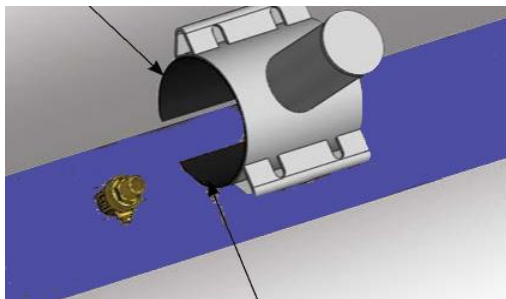


Figure 1 Lubricate Pipe and Sleeve

4. Position back half of sleeve over the tapered ends of the gasket being careful not to fold or roll the edges under themselves.

5. Tighten bolts in sequence, beginning at the ends of the sleeve and alternating on both sides. The gap between the two halves must be

of equal distance when sleeve is fully tightened.

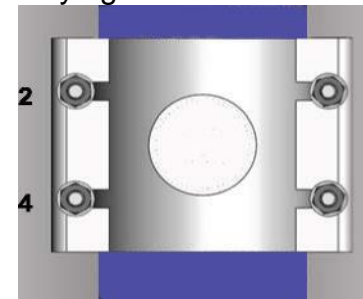


Figure 2 Bolt tightening sequence

6. Tighten both top and bottom bolts evenly, alternating from one side of the sleeve to the other. Torque it according to the specifications. Wait approximately 5 minutes to allow the gasket to fully compress and then re-tighten bolts (90-110 Ft/Lbs.)

