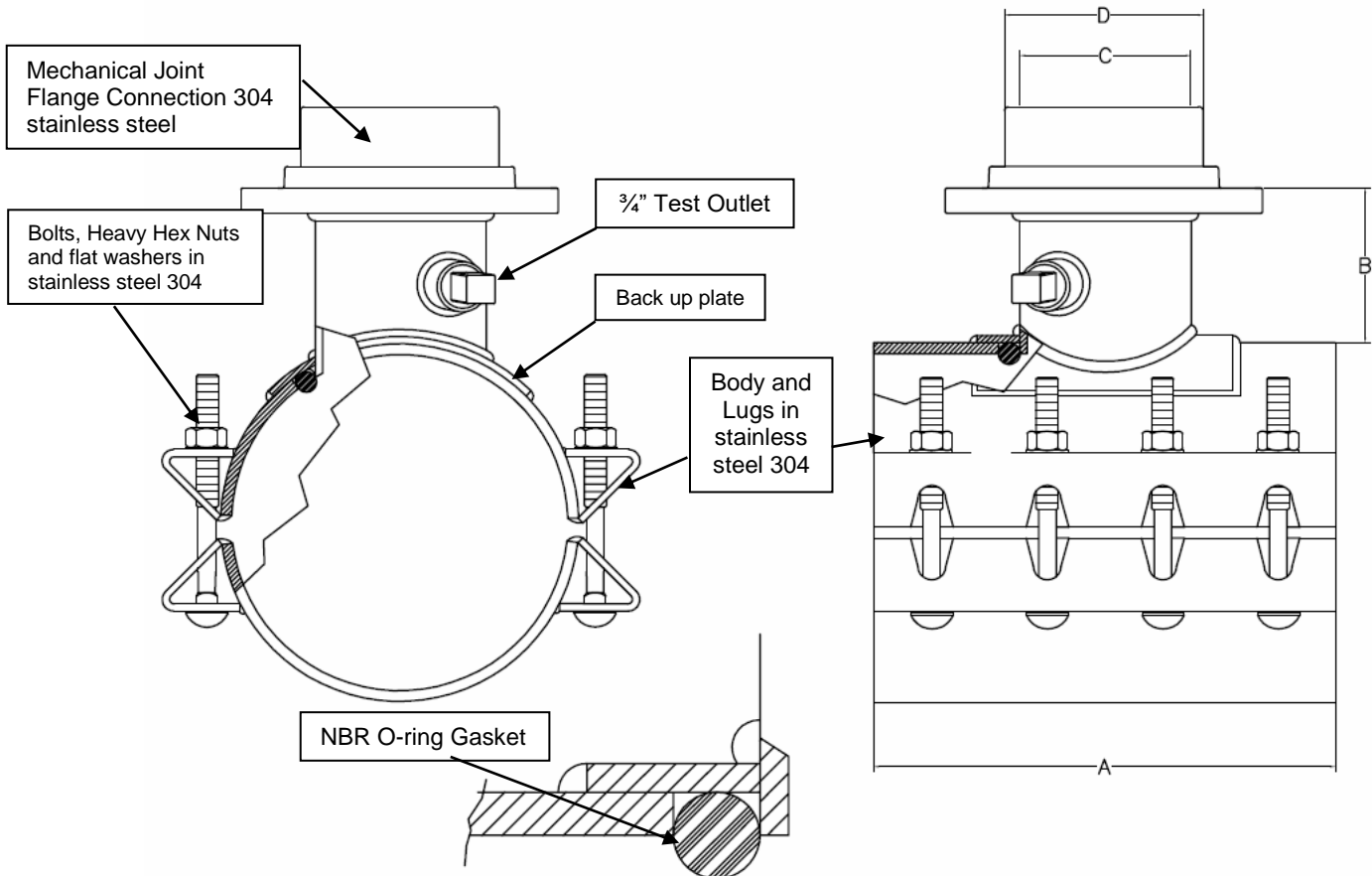


Scope

The intent of this specification is to receive a high pressure rated High Pressure Stainless Steel Tapping Sleeve. The Tapping Sleeve furnished shall be equivalent to Model 3460ASMJ-HP Tapping Sleeve as manufactured by PowerSeal Pipeline Products Corporation.



Branch Size	A (in)	B (in)	C (in)	D (in)	Bolts Size	Bolts Qty	Working Pressure (PSI)	Test Pressure (PSI)
4	12	3.75	4.34	4.80	3/4"	6	200	300
6	12	4.25	6.34	6.90	3/4"	6	200	300
8	16	4.75	8.34	9.05	3/4"	8	200	300
10	20	5.25	10.34	11.1	3/4"	10	150	225
12	20	6.25	12.34	13.20	3/4"	10	150	225

For all pipe 24 inch to 30 inch the working pressure is 150PSI and for 30 inch and up the working pressure is 100PSI regardless of branch size.





Features and Benefits

1. The complete Tapping Sleeve is constructed of 304 Stainless Steel (unless optional carbon steel MJ fitting is ordered) and shall be fully passivated to return the welded stainless steel to its original corrosion resistance state.
2. The Tapping Sleeve shall be factory hydrostatically tested on pipe to verify proper fit and weld integrity. The duration of the test shall be a minimum of three (3) minutes with zero leakage allowed. **The Tapping Sleeve shall be rated for a maximum working pressure of 200psi for nominal sizes up through and including 8". For larger outlets 10" to 18" and pipe diameters from 24" – 30" it is rated at 150psi. For pipe sizes above 30" the sleeve is rated at 100psi.**
3. Built in range allows reduction of inventory.
4. Drop in track head bolts with Stainless Steel nuts allow assembly in either direction.
5. The branch shall be a minimum of 3/8" larger diameter than nominal to allow the use of a full size cutter.
6. Stainless Steel and Carbon Steel flanges outlets available.

Design and Material Specification

1. The tapping sleeve shall meet or exceed all material specifications as listed below.
2. The sleeve meets all AWWA C223 requirements.
3. The tapping sleeve shall have an MJ gasket SBR & a branch sealing O-Ring NBR gasket permanently attached to the sleeve at the factory. The branch sealing gasket NBR temperature range (-25F° - +248F°), and the MJ gasket SBR temperature range (-25F° - +200F°).
4. The tapping sleeve shall incorporate drop-in, oval-neck track-head bolts in low alloy steel. See chart above for quantities.
5. Branch to flange and branch to shell connections are double welded. Outer structural weld GMAW (mig) and inner fusion weld GTAW (tig).
6. Lugs shall be structurally welded GMAW (mig) to the shell and the test outlet shall be fusion welded GTAW (tig) to the branch inside and out.
7. There shall be no paper or plastic adhesive labels attached to the tapping sleeve, any information appearing on the sleeve shall be stenciled.

Material Specifications		
Part Name	Material	Mat. specs
Mechanical Joint Flange	304 Stainless Steel	AWWA C115
MJ Gasket	SBR	AWWA C115AP
Branch	304 Stainless Steel	ASTM A240
Test Plug	304 Stainless Steel	ANSI B2.1
Shell	304 Stainless Steel	ASTM A240
Bolt Lug	304 Stainless Steel	ASTM A240
Branch O-ring	NBR	ASTM D2000
Bolts	304 Stainless Steel	ASTM A193
Nuts	304 Stainless Steel	ASTM A194
Washers	304 Stainless Steel	ANSI B18.22.1
Back up plate	304 Stainless Steel	ASTM A240

