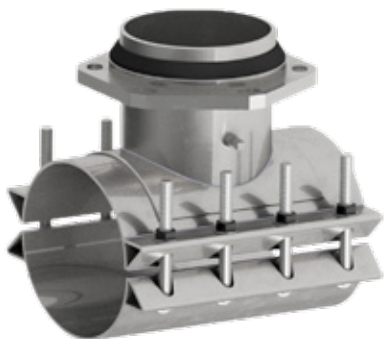


Nominal Pipe Size			Pipe OD Range		Branch Size		Part number	List Price	
In	MM	Letter	Inches	MM	Inches	MM			
20	500	A	21.57-22.15	546-563	4	100	3460+Nominal pipe size+Letter +Branch size+ AS-HP	\$6,263.60	
		B	22.16-22.81	563-579		150		\$6,925.70	
		C	22.78-23.45	579-596		6		200	\$9,408.40
		D	23.46-24.16	596-614		8		250	\$11,407.90
		E	24.15-24.85	613-631		10		300	\$12,243.80
		F	24.82-25.52	630-648		12			
24	600	A	25.71-26.41	653-671	4	100		\$6,711.60	
		B	26.55-27.25	674-692	6	150		\$7,219.20	
		C	27.26-27.96	692-710	8	200		\$10,048.30	
		D	28.14-28.84	715-733	10	250		\$11,416.20	
					12	300		\$12,416.60	
30	750	A	29.78-30.48	756-774	4	100		\$8,497.10	
		B	30.48-31.18	774-792	6	150	\$9,493.40		
					8	200	\$10,471.60		
					10	250	\$11,486.00		
					12	300	\$12,482.30		
					C	31.52-32.22	801-818		

**CUSTOM SIZES AVAILABLE.**

**HOW TO ORDER:** Choose the Pipe Size Letter Code corresponding to a Pipe OD Range that covers the Pipe OD to be tapped and then specify the desired branch size. **EXAMPLE:** 16" Asbestos-Cement Class 150 O.D. 18.72 with 8 inch Branch size and alloy bolts. Order 3460AS - 16D x 8. **Part Number:** 3460+Nominal pipe size+Letter+Branch size+ AS-HP = 346016D080AS-HP .For Outlet Sizes 14" and above the tapping valve being used must be advised to PowerSeal in order to guarantee proper alignment recess mating.



# 3460AS-MJ

## STAINLESS STEEL TAPPING SLEEVE W/MECHANICAL JOINT OUTLET

**USE:** Faster, economical and simple method to connect valve to existing or new lines under pressure.

**BRANCH:** NBR per ASTM D2000.

**PANEL:** Type 304 (18-8) Stainless Steel per ASTM A240

**BOLTS & NUTS:** Type 304 (18-8) Stainless Steel per ASTM A193 and A194. **NOTE:** Stainless Steel hex nuts are furnished with fusion bonded coating to prevent seizing and galling.

**OUTLET:** Type 304 (18-8) Stainless Steel per ANSI 21.11.



Nominal Pipe Size			Pipe OD Range		Branch Size		Part number	List Price		
In	MM	Letter	Inches	MM	Inches	MM				
4*	100	A	4.50	114	4	100	3460+Nominal pipe size+Letter +Branch size+ MJ-HP	\$4,013.30		
		B	4.80	122						
6*	150	A	6.56-6.69	167-170	4	100			\$4,729.50	
		B	6.83-7.16	173-182						
		C	7.05-7.40	179-188		6				150
		D	7.40-7.73	188-196						

Nominal Pipe Size			Pipe OD Range		Branch Size		Part number	\$List Price
In	MM	Letter	Inches	MM	Inches	MM		
8*	200	A	7.80-8.16	198-207	4 6 8	100	3460+Nominal pipe size+Letter +Branch size+ MJ-HP	\$4,264.70
		B	8.53-8.72	217-221		150		\$4,939.80
		C	8.98-9.37	228-238		200		\$6,415.10
		D	9.27-9.69	235-246		250		\$9,677.10
10*	250	A	9.83-10.25	250-260	4 6 8 10	100	3460+Nominal pipe size+Letter +Branch size+ MJ-HP	\$4,676.10
		B	10.64-10.86	270-276		150		\$5,259.80
		C	11.03-11.47	280-291		200		\$6,786.80
		D	11.36-11.80	289-300		250		\$9,677.10
		E	11.76-12.24	299-311		300		\$12,411.60
12*	300	A	12.62-12.88	321-327	4 6 8 10 12	100	3460+Nominal pipe size+Letter +Branch size+ MJ-HP	\$4,735.50
		B	13.13-13.60	334-345		150		\$5,470.00
		D	13.60-14.09	345-358		200		\$7,051.90
			14.09-14.56	358-370		250		\$9,919.30
			300	\$12,411.60				
14	350	A	14.59-15.08	371-383	4 6 8 10 12	100	3460+Nominal pipe size+Letter +Branch size+ MJ-HP	\$5,818.80
		B	15.23-15.80	387-401		150		\$6,626.50
		D	15.73-16.22	400-412		200		\$9,277.9
			16.30-16.73	414-425		250		\$12,355.60
			300	\$13,339.30				
16	400	A	16.74-17.26	425-438	4 6 8 10 12	100	3460+Nominal pipe size+Letter +Branch size+ MJ-HP	\$6,202.80
		B	17.33-17.87	440-454		150		\$7,042.40
		C	17.88-18.43			200		\$9,808.10
		D	18.62-19.19	473-487		250		\$12,639.00
			300	\$13,554.50				
18	450	A	18.87-19.45	479-494	4 6 8 10 12	100	3460+Nominal pipe size+Letter +Branch size+ MJ-HP	\$6,303.40
		B	19.41-20.01	493-508		150		\$7,170.40
		C	20.00-20.60	508-523		200		\$10,000.10
		D	20.29-20.94	515-532		250		\$12,679.90
		E	20.93-21.57	532-548		300		\$13,681.00
20	500	A	21.57-22.15	546-563	4 6 8 10 12	100	3460+Nominal pipe size+Letter +Branch size+ MJ-HP	\$6,513.60
		B	22.16-22.81	563-579		150		\$7,425.70
		C	22.78-23.45	579-596		200		\$10,338.40
		D	23.46-24.16	596-614		250		\$12,727.90
		E	24.15-24.85	613-631		300		\$13,683.80
		F	24.82-25.52	630-648				
24	600	A	25.71-26.41	653-671	4 6 8 10 12	100	3460+Nominal pipe size+Letter +Branch size+ MJ-HP	\$6,961.60
		B	26.55-27.25	674-692		150		\$7,719.20
		C	27.26-27.96	692-710		200		\$10,978.30
		D	28.14-28.84	715-733		250		\$12,736.20
			300	\$13,856.60				
30	750	A	29.78-30.48	756-774	4 6 8 10 12	100	3460+Nominal pipe size+Letter +Branch size+ MJ-HP	\$8,747.10
		B	30.48-31.18	774-792		150		\$9,993.40
			200	\$11,401.60				
			250	\$12,806.00				
		C	31.52-32.22	801-818		300		\$13,922.30

**CUSTOM SIZES AVAILABLE.**

\* Size on size not available

**HOW TO ORDER:** Choose the Pipe Size Letter Code corresponding to a Pipe OD Range that covers the Pipe OD to be tapped, then specify the desired branch size and type of bolts. EXAMPLE: 16" Asbestos-Cement Class 150 O.D. 19.60 with 8 inch MJ Branch and Stainless Steel bolts and nuts. Order 3460MJAS-18B x 8. **Part Number:** 3460+Nominal pipe size+Letter+Branch size+ MJ-HP = 346018B080MJ-HP. For Outlet Sizes 14" and above the tapping valve being used must be advised to PowerSeal in order to guarantee proper alignment recess mating.\*Manufactured under U.S. Patent 6,330,771.