

3480MJ / 3480MJ-CS TAP SLEEVE W/MECHANICAL JOINT OUTLET

MJ OUTLET: Type 304 (18-8) Stainless Steel per ASTM A743 and ANSI/AWWA C111 or Carbon Steel. Solid One-Piece casting.

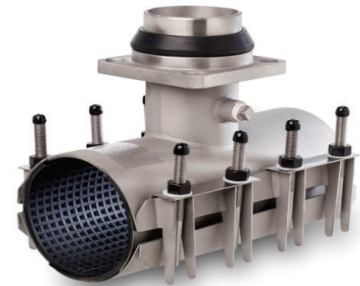
PANEL: Type 304 (18-8) Stainless Steel per ASTM A240.

SHELL GASKET: SBR Chek-O-Seal with multi o-ring sealing ribs from 100% new rubber to ensure performance under varying pressures with superior storage characteristics. Suitable for mild acids, water and salt media with a temperature range of -25°F to +200°F per ASTM D2000. Other materials available.

BRANCH GASKET: NBR per ASTM D2000 with Hydro TwinSeal® dual o-ring design incorporating both hydrostatic and mechanical forces to affect a dynamic seal.

BOLTS & NUTS: Type 304 (18-8) Stainless Steel per ASTM A193 and A194. **NOTE:** Hex nuts are furnished with fusion bonded coating to prevent seizing and galling.

WASHERS: Delrin per ASTM D6778.



Nominal Pipe Size		Letter Code	Pipe OD Range		BY	Branch Size		Stainless Steel MJ		Carbon Steel MJ	
Inches	MM		Inches	MM		Inches	MM	Part Number	List Price	Part Number	List Price
4	100	A	4.50-4.70	114-119	X	2	50	348004A020MJ	\$ 1,195.30	348004A020MJ-CS	\$ 1,133.60
		B	4.70-4.90	119-124				348004B020MJ		348004B020MJ-CS	
		C	4.80-5.00	112-127				348004C020MJ		348004C020MJ-CS	
		D	5.10-5.30	130-135				348004D020MJ		348004D020MJ-CS	
		E	5.20-5.40	132-137				348004E020MJ		348004E020MJ-CS	
4	100	A	4.50-4.70	114-119	X	3	80	348004A030MJ	\$ 1,207.50	348004A030MJ-CS	\$ 1,145.80
		B	4.70-4.90	119-124				348004B030MJ		348004B030MJ-CS	
		C	4.80-5.00	112-127				348004C030MJ		348004C030MJ-CS	
		D	5.10-5.30	130-135				348004D030MJ		348004D030MJ-CS	
		E	5.20-5.40	132-137				348004E030MJ		348004E030MJ-CS	
4	100	A	4.50-4.70	114-119	X	4	100	348004A040MJ	\$ 1,213.60	348004A040MJ-CS	\$ 1,158.00
		B	4.70-4.90	119-124				348004B040MJ		348004B040MJ-CS	
		C	4.80-5.00	112-127				348004C040MJ		348004C040MJ-CS	
		D	5.10-5.30	130-135				348004D040MJ		348004D040MJ-CS	
		E	5.20-5.40	132-137				348004E040MJ		348004E040MJ-CS	
6	150	A	6.00-6.20	152-157	X	2	50	348006A020MJ	\$ 1,245.70	348006A020MJ-CS	\$ 1,182.20
		B	6.60-7.00	168-178				348006B020MJ		348006B020MJ-CS	
		C	6.90-7.30	175-185				348006C020MJ		348006C020MJ-CS	
		D	7.10-7.50	180-191				348006D020MJ		348006D020MJ-CS	
6	150	A	6.00-6.20	152-157	X	3	80	348006A030MJ	\$ 1,258.40	348006A030MJ-CS	\$ 1,194.90
		B	6.60-7.00	168-178				348006B030MJ		348006B030MJ-CS	
		C	6.90-7.30	175-185				348006C030MJ		348006C030MJ-CS	
		D	7.10-7.50	180-191				348006D030MJ		348006D030MJ-CS	
6	150	A	6.00-6.20	152-157	X	4	100	348006A040MJ	\$ 1,264.80	348006A040MJ-CS	\$ 1,207.60
		B	6.60-7.00	168-178				348006B040MJ		348006B040MJ-CS	
		C	6.90-7.30	175-185				348006C040MJ		348006C040MJ-CS	
		D	7.10-7.50	180-191				348006D040MJ		348006D040MJ-CS	

3480MJ / 3480MJ-CS TAP SLEEVE W/MECHANICAL JOINT OUTLET

Nominal Pipe Size		Letter Code	Pipe OD Range		BY	Branch Size		Stainless Steel MJ		Carbon Steel MJ	
Inches	MM		Inches	MM		Inches	MM	Part Number	List Price	Part Number	List Price
6	150	B	6.60-7.00	168-178	X	6	150	348006B060MJ	\$ 1,442.30	348006B060MJ-CS	\$ 1,377.20
		C	6.90-7.30	175-185				348006C060MJ		348006C060MJ-CS	
		D	7.10-7.50	180-191				348006D060MJ		348006D060MJ-CS	
8	200	A	7.90-8.30	201-211	X	2	50	348008A020MJ	\$ 1,289.80	348008A020MJ-CS	\$ 1,224.00
		B	8.60-9.05	218-230				348008B020MJ		348008B020MJ-CS	
		C	9.05-9.45	230-240				348008C020MJ		348008C020MJ-CS	
		D	9.20-9.60	234-244				348008D020MJ		348008D020MJ-CS	
8	200	A	7.90-8.30	201-211	X	3	80	348008A030MJ	\$ 1,303.00	348008A030MJ-CS	\$ 1,237.20
		B	8.60-9.05	218-230				348008B030MJ		348008B030MJ-CS	
		C	9.05-9.45	230-240				348008C030MJ		348008C030MJ-CS	
		D	9.20-9.60	234-244				348008D030MJ		348008D030MJ-CS	
8	200	A	7.90-8.30	201-211	X	4	100	348008A040MJ	\$ 1,309.60	348008A040MJ-CS	\$ 1,250.30
		B	8.60-9.05	218-230				348008B040MJ		348008B040MJ-CS	
		C	9.05-9.45	230-240				348008C040MJ		348008C040MJ-CS	
		D	9.20-9.60	234-244				348008D040MJ		348008D040MJ-CS	
8	200	A	7.90-8.30	201-211	X	6	150	348008A060MJ	\$ 1,449.10	348008A060MJ-CS	\$ 1,390.60
		B	8.60-9.05	218-230				348008B060MJ		348008B060MJ-CS	
		C	9.05-9.45	230-240				348008C060MJ		348008C060MJ-CS	
		D	9.20-9.60	234-244				348008D060MJ		348008D060MJ-CS	
8	200	B	8.60-9.05	218-230	X	8	200	348008B080MJ	\$ 1,809.50	348008B080MJ-CS	\$ 1,727.60
		C	9.05-9.45	230-240				348008C080MJ		348008C080MJ-CS	
		D	9.20-9.60	234-244				348008D080MJ		348008D080MJ-CS	
10	250	A	9.90-10.30	251-262	X	2	50	348010A020MJ	\$ 1,400.70	348010A020MJ-CS	\$ 1,329.20
		B	10.70-11.10	272-282				348010B020MJ		348010B020MJ-CS	
		C	11.10-11.50	282-292				348010C020MJ		348010C020MJ-CS	
		D	11.40-11.80	290-300				348010D020MJ		348010D020MJ-CS	
		E	11.80-12.20	300-310				348010E020MJ		348010E020MJ-CS	
10	250	A	9.90-10.30	251-262	X	3	80	348010A030MJ	\$ 1,415.00	348010A030MJ-CS	\$ 1,343.50
		B	10.70-11.10	272-282				348010B030MJ		348010B030MJ-CS	
		C	11.10-11.50	282-292				348010C030MJ		348010C030MJ-CS	
		D	11.40-11.80	290-300				348010D030MJ		348010D030MJ-CS	
		E	11.80-12.20	300-310				348010E030MJ		348010E030MJ-CS	
10	250	A	9.90-10.30	251-262	X	4	100	348010A040MJ	\$ 1,422.10	348010A040MJ-CS	\$ 1,357.80
		B	10.70-11.10	272-282				348010B040MJ		348010B040MJ-CS	
		C	11.10-11.50	282-292				348010C040MJ		348010C040MJ-CS	
		D	11.40-11.80	290-300				348010D040MJ		348010D040MJ-CS	
		E	11.80-12.20	300-310				348010E040MJ		348010E040MJ-CS	
10	250	A	9.90-10.30	251-262	X	6	150	348010A060MJ	\$ 1,544.60	348010A060MJ-CS	\$ 1,474.70
		B	10.70-11.10	272-282				348010B060MJ		348010B060MJ-CS	
		C	11.10-11.50	282-292				348010C060MJ		348010C060MJ-CS	
		D	11.40-11.80	290-300				348010D060MJ		348010D060MJ-CS	
		E	11.80-12.20	300-310				348010E060MJ		348010E060MJ-CS	

3480MJ / 3480MJ-CS TAP SLEEVE W/MECHANICAL JOINT OUTLET

Nominal Pipe Size		Letter Code	Pipe OD Range		BY	Branch Size		Stainless Steel MJ		Carbon Steel MJ	
Inches	MM		Inches	MM		Inches	MM	Part Number	List Price	Part Number	List Price
10	250	A	9.90-10.30	251-262	X	8	200	348010A080MJ	\$ 1,958.50	348010A080MJ-CS	\$ 1,870.00
		B	10.70-11.10	272-282				348010B080MJ		348010B080MJ-CS	
		C	11.10-11.50	282-292				348010C080MJ		348010C080MJ-CS	
		D	11.40-11.80	290-300				348010D080MJ		348010D080MJ-CS	
		E	11.80-12.20	300-310				348010E080MJ		348010E080MJ-CS	
10	250	B	10.70-11.10	272-282	X	10	250	348010B100MJ	\$ 3,245.40	348010B100MJ-CS	\$ 3,098.70
		C	11.10-11.50	282-292				348010C100MJ		348010C100MJ-CS	
		D	11.40-11.80	290-300				348010D100MJ		348010D100MJ-CS	
		E	11.80-12.20	300-310				348010E100MJ		348010E100MJ-CS	
12	300	A	11.90-12.30	302-312	X	2	50	348012A020MJ	\$ 1,277.20	348012A020MJ-CS	\$ 1,572.70
		B	12.50-12.90	318-328				348012B020MJ		348012B020MJ-CS	
		C	13.20-13.60	335-345				348012C020MJ		348012C020MJ-CS	
		D	13.40-13.80	340-351				348012D020MJ		348012D020MJ-CS	
		E	13.90-14.30	355-363				348012E020MJ		348012E020MJ-CS	
12	300	A	11.90-12.30	302-312	X	3	80	348012A030MJ	\$ 1,674.10	348012A030MJ-CS	\$ 1,589.60
		B	12.50-12.90	318-328				348012B030MJ		348012B030MJ-CS	
		C	13.20-13.60	335-345				348012C030MJ		348012C030MJ-CS	
		D	13.40-13.80	340-351				348012D030MJ		348012D030MJ-CS	
		E	13.90-14.30	355-363				348012E030MJ		348012E030MJ-CS	
12	300	A	11.90-12.30	302-312	X	4	100	348012A040MJ	\$ 1,682.60	348012A040MJ-CS	\$ 1,606.50
		B	12.50-12.90	318-328				348012B040MJ		348012B040MJ-CS	
		C	13.20-13.60	335-345				348012C040MJ		348012C040MJ-CS	
		D	13.40-13.80	340-351				348012D040MJ		348012D040MJ-CS	
		E	13.90-14.30	355-363				348012E040MJ		348012E040MJ-CS	
12	300	A	11.90-12.30	302-312	X	6	150	348012A060MJ	\$ 1,851.20	348012A060MJ-CS	\$ 1,767.50
		B	12.50-12.90	318-328				348012B060MJ		348012B060MJ-CS	
		C	13.20-13.60	335-345				348012C060MJ		348012C060MJ-CS	
		D	13.40-13.80	340-351				348012D060MJ		348012D060MJ-CS	
		E	13.90-14.30	355-363				348012E060MJ		348012E060MJ-CS	
12	300	A	11.90-12.30	302-312	X	8	200	348012A080MJ	\$ 2,238.30	348012A080MJ-CS	\$ 2,137.10
		B	12.50-12.90	318-328				348012B080MJ		348012B080MJ-CS	
		C	13.20-13.60	335-345				348012C080MJ		348012C080MJ-CS	
		D	13.40-13.80	340-351				348012D080MJ		348012D080MJ-CS	
		E	13.90-14.30	355-363				348012E080MJ		348012E080MJ-CS	
12	300	A	11.90-12.30	302-312	X	10	250	348012A100MJ	\$ 3,525.40	348012A100MJ-CS	\$ 3,365.90
		B	12.50-12.90	318-328				348012B100MJ		348012B100MJ-CS	
		C	13.20-13.60	335-345				34802C100MJ		348012C100MJ-CS	
		D	13.40-13.80	340-351				348012D100MJ		348012D100MJ-CS	
		E	13.90-14.30	355-363				348012E100MJ		348012E100MJ-CS	
12	300	B	12.50-12.90	318-328	X	12	300	348012B120MJ	\$ 4,199.80	348012B120MJ-CS	\$ 4,009.80
		C	13.20-13.60	335-345				348012C120MJ		348012C120MJ-CS	
		D	13.40-13.80	340-351				348012D120MJ		348012D120MJ-CS	
		E	13.90-14.30	355-363				348012E120MJ		348012E120MJ-CS	

3480MJ / 3480MJ-CS TAP SLEEVE W/MECHANICAL JOINT OUTLET

Nominal Pipe Size		Letter Code	Pipe OD Range		BY	Branch Size		Stainless Steel MJ		Carbon Steel MJ	
Inches	MM		Inches	MM		Inches	MM	Part Number	List Price	Part Number	List Price
14	350	A	15.00-15.40	381-391	X	2	50	348014A020MJ	\$ 2,295.70	348014A020MJ-CS	\$ 2,178.60
		B	15.30-15.70	389-399				348014B020MJ		348014B020MJ-CS	
		C	15.90-16.30	404-414				348014C020MJ		348014C020MJ-CS	
		D	16.40-16.80	417-427				348014D020MJ		348014D020MJ-CS	
14	350	A	15.00-15.40	381-391	X	3	80	348014A030MJ	\$ 2,319.10	348014A030MJ-CS	\$ 2,202.00
		B	15.30-15.70	389-399				348014B030MJ		348014B030MJ-CS	
		C	15.90-16.30	404-414				348014C030MJ		348014C030MJ-CS	
		D	16.40-16.80	417-427				348014D030MJ		348014D030MJ-CS	
14	350	A	15.00-15.40	381-391	X	4	100	348014A040MJ	\$ 2,330.80	348014A040MJ-CS	\$ 2,225.40
		B	15.30-15.70	389-399				348014B040MJ		348014B040MJ-CS	
		C	15.90-16.30	404-414				348014C040MJ		348014C040MJ-CS	
		D	16.40-16.80	417-427				348014D040MJ		348014D040MJ-CS	
14	350	A	15.00-15.40	381-391	X	6	150	348014A060MJ	\$ 2,555.50	348014A060MJ-CS	\$ 2,440.00
		B	15.30-15.70	389-399				348014B060MJ		348014B060MJ-CS	
		C	15.90-16.30	404-414				348014C060MJ		348014C060MJ-CS	
		D	16.40-16.80	417-427				348014D060MJ		348014D060MJ-CS	
14	350	A	15.00-15.40	381-391	X	8	200	348014A080MJ	\$ 3,358.80	348014A080MJ-CS	\$ 3,206.90
		B	15.30-15.70	389-399				348014B080MJ		348014B080MJ-CS	
		C	15.90-16.30	404-414				348014C080MJ		348014C080MJ-CS	
		D	16.40-16.80	417-427				348014D080MJ		348014D080MJ-CS	
14	350	A	15.00-15.40	381-391	X	10	250	348014A100MJ	\$ 4,546.30	348014A100MJ-CS	\$ 4,340.70
		B	15.30-15.70	389-399				348014B100MJ		348014B100MJ-CS	
		C	15.90-16.30	404-414				348014C100MJ		348014C100MJ-CS	
		D	16.40-16.80	417-427				348014D100MJ		348014D100MJ-CS	
14	350	A	15.00-15.40	381-391	X	12	300	348014A120MJ	\$ 5,384.90	348014A120MJ-CS	\$ 5,141.30
		B	15.30-15.70	389-399				348014B120MJ		348014B120MJ-CS	
		C	15.90-16.30	404-414				348014C120MJ		348014C120MJ-CS	
		D	16.40-16.80	417-427				348014D120MJ		348014D120MJ-CS	
16	400	A	17.00-17.40	432-442	X	2	50	348016A020MJ	\$ 2,651.40	348016A020MJ-CS	\$ 2,516.10
		B	17.40-17.80	442-452				348016B020MJ		348016B020MJ-CS	
		C	17.70-18.10	450-460				348016C020MJ		348016C020MJ-CS	
16	400	A	17.00-17.40	432-442	X	3	80	348016A030MJ	\$ 2,678.40	348016A030MJ-CS	\$ 2,543.20
		B	17.40-17.80	442-452				348016B030MJ		348016B030MJ-CS	
		C	17.70-18.10	450-460				348016C030MJ		348016C030MJ-CS	
16	400	A	17.00-17.40	432-442	X	4	100	348016A040MJ	\$ 2,916.60	348016A040MJ-CS	\$ 2,570.20
		B	17.40-17.80	442-452				348016B040MJ		348016B040MJ-CS	
		C	17.70-18.10	450-460				348016C040MJ		348016C040MJ-CS	
16	400	A	17.00-17.40	432-442	X	6	150	348016A060MJ	\$ 3,474.00	348016A060MJ-CS	\$ 2,784.70
		B	17.40-17.80	442-452				348016B060MJ		348016B060MJ-CS	
		C	17.70-18.10	450-460				348016C060MJ		348016C060MJ-CS	
16	400	A	17.00-17.40	432-442	X	8	200	348016A080MJ	\$ 4,823.90	348016A080MJ-CS	\$ 3,316.80
		B	17.40-17.80	442-452				348016B080MJ		348016B080MJ-CS	
		C	17.70-18.10	450-460				348016C080MJ		348016C080MJ-CS	

3480MJ / 3480MJ-CS TAP SLEEVE W/MECHANICAL JOINT OUTLET

Nominal Pipe Size		Letter Code	Pipe OD Range		BY	Branch Size		Stainless Steel MJ		Carbon Steel MJ	
Inches	MM		Inches	MM		Inches	MM	Part Number	List Price	Part Number	List Price
16	400	A	17.00-17.40	432-442	X	10	250	348016A100MJ	\$ 4,824.00	348016A100MJ-CS	\$ 4,605.70
		B	17.40-17.80	442-452				348016B100MJ		348016B100MJ-CS	
		C	17.70-18.10	450-460				348016C100MJ		348016C100MJ-CS	
16	400	A	17.00-17.40	432-442	X	12	300	348016A120MJ	\$ 5,531.00	348016A120MJ-CS	\$ 5,280.90
		B	17.40-17.80	442-452				348016B120MJ		348016B120MJ-CS	
		C	17.70-18.10	450-460				348016C120MJ		348016C120MJ-CS	
18	450	A	18.40-18.80	467-478	X	2	50	348018A020MJ	\$ 2,706.50	348018A020MJ-CS	\$ 2,568.40
		B	18.60-19.00	472-483				348018B020MJ		348018B020MJ-CS	
		C	19.30-19.70	490-500				348018C020MJ		348018C020MJ-CS	
		D	19.80-20.20	503-513				348018D020MJ		348018D020MJ-CS	
18	450	A	18.40-18.80	467-478	X	3	80	348018A030MJ	\$ 2,734.10	348018A030MJ-CS	\$ 2,596.00
		B	18.60-19.00	472-483				348018B030MJ		348018B030MJ-CS	
		C	19.30-19.70	490-500				348018C030MJ		348018C030MJ-CS	
		D	19.80-20.20	503-513				348018D030MJ		348018D030MJ-CS	
18	450	A	18.40-18.80	467-478	X	4	100	348018A040MJ	\$ 2,748.00	348018A040MJ-CS	\$ 2,623.70
		B	18.60-19.00	472-483				348018B040MJ		348018B040MJ-CS	
		C	19.30-19.70	490-500				348018C040MJ		348018C040MJ-CS	
		D	19.80-20.20	503-513				348018D040MJ		348018D040MJ-CS	
18	450	A	18.40-18.80	467-478	X	6	150	348018A060MJ	\$ 2,973.20	348018A060MJ-CS	\$ 2,838.70
		B	18.60-19.00	472-483				348018B060MJ		348018B060MJ-CS	
		C	19.30-19.70	490-500				348018C060MJ		348018C060MJ-CS	
		D	19.80-20.20	503-513				348018D060MJ		348018D060MJ-CS	
18	450	A	18.40-18.80	467-478	X	8	200	348018A080MJ	\$ 3,574.90	348018A080MJ-CS	\$ 3,413.20
		B	18.60-19.00	472-483				348018B080MJ		348018B080MJ-CS	
		C	19.30-19.70	490-500				348018C080MJ		348018C080MJ-CS	
		D	19.80-20.20	503-513				348018D080MJ		348018D080MJ-CS	
18	450	A	18.40-18.80	467-478	X	10	250	348018A100MJ	\$ 4,940.00	348018A100MJ-CS	\$ 4,716.60
		B	18.60-19.00	472-483				348018B100MJ		348018B100MJ-CS	
		C	19.30-19.70	490-500				348018C100MJ		348018C100MJ-CS	
		D	19.80-20.20	503-513				348018D100MJ		348018D100MJ-CS	
18	400	A	18.40-18.80	467-478	X	12	300	348018A120MJ	\$ 5,647.20	348018A120MJ-CS	\$ 5,391.80
		B	18.60-19.00	472-483				348018B120MJ		348018B120MJ-CS	
		C	19.30-19.70	490-500				348018C120MJ		348018C120MJ-CS	
		D	19.80-20.20	503-513				348018D120MJ		348018D120MJ-CS	
20	500	A	21.40-21.80	544-554	X	2	50	348020A020MJ	\$ 3,104.90	348020A020MJ-CS	\$ 2,946.50
		B	21.90-22.30	556-566				348020B020MJ		348020B020MJ-CS	
20	500	A	21.40-21.80	544-554	X	3	80	348020A030MJ	\$ 3,136.60	348020A030MJ-CS	\$ 2,978.20
		B	21.90-22.30	556-566				348020B030MJ		348020B030MJ-CS	
20	500	A	21.40-21.80	544-554	X	4	100	348020A040MJ	\$ 3,152.40	348020A040MJ-CS	\$ 3,009.80
		B	21.90-22.30	556-566				348020B040MJ		348020B040MJ-CS	
20	500	A	21.40-21.80	544-554	X	6	150	348020A060MJ	\$ 3,377.20	348020A060MJ-CS	\$ 3,224.50
		B	21.90-22.30	556-566				348020B060MJ		348020B060MJ-CS	

3480MJ / 3480MJ-CS TAP SLEEVE W/MECHANICAL JOINT OUTLET

Nominal Pipe Size		Letter Code	Pipe OD Range		BY	Branch Size		Stainless Steel MJ		Carbon Steel MJ	
Inches	MM		Inches	MM		Inches	MM	Part Number	List Price	Part Number	List Price
20	500	A	21.40-21.80	544-554	X	8	200	348020A080MJ	\$ 4,127.30	348020A080MJ-CS	\$ 3,940.60
		B	21.90-22.30	556-566				348020B080MJ		348020B080MJ-CS	
20	500	A	21.40-21.80	544-554	X	10	250	348020A100MJ	\$ 5,587.30	348020A100MJ-CS	\$ 5,334.60
		B	21.90-22.30	556-566				348020B100MJ		348020B100MJ-CS	
20	500	A	21.40-21.80	544-554	X	12	300	348020A120MJ	\$ 6,294.40	348020A120MJ-CS	\$ 6,009.70
		B	21.90-22.30	556-566				348020B120MJ		348020B120MJ-CS	
24	600	A	25.60-26.00	650-660	X	2	50	384024A020MJ	\$ 3,254.10	348024A020MJ-CS	\$ 3,088.10
		B	26.20-26.60	665-676				348024B020MJ		348024B020MJ-CS	
24	600	A	25.60-26.00	650-660	X	3	80	348024A030MJ	\$ 3,287.30	348024A030MJ-CS	\$ 3,121.30
		B	26.20-26.60	665-676				348024B030MJ		348024B030MJ-CS	
24	600	A	25.60-26.00	650-660	X	4	100	348024A040MJ	\$ 3,304.00	348024A040MJ-CS	\$ 3,154.50
		B	26.20-26.60	665-676				348024B040MJ		348024B040MJ-CS	
24	600	A	25.60-26.00	650-660	X	6	150	348024A060MJ	\$ 3,528.60	348024A060MJ-CS	\$ 3,369.00
		B	26.20-26.60	665-676				348024B060MJ		348024B060MJ-CS	
24	600	A	25.60-26.00	650-660	X	8	200	348024A080MJ	\$ 4,295.00	348024A080MJ-CS	\$ 4,100.80
		B	26.20-26.60	665-676				348024B080MJ		348024B080MJ-CS	
24	600	A	25.60-26.00	650-660	X	10	250	348024A100MJ	\$ 5,771.00	348024A100MJ-CS	\$ 5,510.00
		B	26.20-26.60	665-676				348024B100MJ		348024B100MJ-CS	
24	600	A	25.60-26.00	650-660	X	12	300	348024A120MJ	\$ 6,483.30	348024A120MJ-CS	\$ 6,190.10
		B	26.20-26.60	665-676				348024B120MJ		348024B120MJ-CS	

CUSTOM SIZES AVAILABLE.

HOW TO ORDER: Choose the Pipe Size Letter Code corresponding to a Pipe OD Range that covers the Pipe OD to be tapped and then specify the desired branch size. EXAMPLE: 8" C900 PVC O.D. 9.05 with 6 inch Stainless Steel MJ Branch. Order 3480MJ -8C x 6. **Part Number:** 348008C060MJ .

For Outlet Sizes 14" and above the tapping valve being used must be advised to PowerSeal in order to guarantee proper alignment recess mating.

*Manufactured under U.S. Patent 6,330,771.