

3480AS / 3480CS TAP SLEEVE W/FLANGE OUTLET

FLANGE: Type 304 (18-8) Stainless Steel or A36 Carbon Steel per AWWA C207.

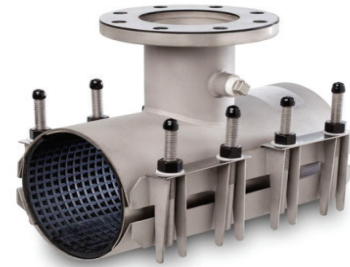
PANEL: Type 304 (18-8) Stainless Steel per ASTM A240.

SHELL GASKET: SBR Chek-0-Seal with multi o-ring sealing ribs from 100% new rubber to ensure performance under varying pressures with superior storage characteristics. Suitable for mild acids, water and salt media with a temperature range of -25°F to +200°F per ASTM D2000. Other materials available.

BRANCH GASKET: NBR per ASTM D2000 with Hydro TwinSeal® dual o-ring design incorporating both hydrostatic and mechanical forces to affect a dynamic seal.

BOLTS & NUTS: Type 304 (18-8) Stainless Steel per ASTM A193 and A194. NOTE: Hex nuts are furnished with fusion bonded coating to prevent seizing and galling.

WASHERS: Delrin per ASTM D6778.



Nominal Pipe Size		Letter Code	Pipe OD Range		BY	Branch Size		Stainless Steel Flange		Carbon Steel Flange	
Inches	MM		Inches	MM		Inches	MM	Part Number	List Price	Part Number	List Price
4	100	A	4.50-4.70	114-119	X	2	50	348004A020AS	\$ 1,075.80	348004A020CS	\$ 1,020.20
		B	4.70-4.90	119-124				348004B020AS		348004B020CS	
		C	4.80-5.00	112-127				348004C020AS		348004C020CS	
		D	5.10-5.30	130-135				348004D020AS		348004D020CS	
		E	5.20-5.40	132-137				348004E020AS		348004E020CS	
4	100	A	4.50-4.70	114-119	X	3	80	348004A030AS	\$ 1,086.70	348004A030CS	\$ 1,031.20
		B	4.70-4.90	119-124				348004B030AS		348004B030CS	
		C	4.80-5.00	112-127				348004C030AS		348004C030CS	
		D	5.10-5.30	130-135				348004D030AS		348004D030CS	
		E	5.20-5.40	132-137				348004E030AS		348004E030CS	
4	100	A	4.50-4.70	114-119	X	4	100	348004A040AS	\$ 1,092.20	348004A040CS	\$ 1,042.20
		B	4.70-4.90	119-124				348004B040AS		348004B040CS	
		C	4.80-5.00	112-127				348004C040AS		348004C040CS	
		D	5.10-5.30	130-135				348004D040AS		348004D040CS	
		E	5.20-5.40	132-137				348004E040AS		348004E040CS	
6	150	A	6.00-6.20	152-157	X	2	50	348006A020AS	\$ 1,121.10	348006A020CS	\$ 1,063.90
		B	6.60-7.00	168-178				348006B020AS		348006B020CS	
		C	6.90-7.30	175-185				348006C020AS		348006C020CS	
		D	7.10-7.50	180-191				348006D020AS		348006D020CS	
6	150	A	6.00-6.20	152-157	X	3	80	348006A030AS	\$ 1,132.60	348006A030CS	\$ 1,075.40
		B	6.60-7.00	168-178				348006B030AS		348006B030CS	
		C	6.90-7.30	175-185				348006C030AS		348006C030CS	
		D	7.10-7.50	180-191				348006C030AS		348006D030CS	
6	150	A	6.00-6.20	152-157	X	4	100	348006A040AS	\$ 1,138.30	348006A040CS	\$ 1,086.80
		B	6.60-7.00	168-178				348006B040AS		348006B040CS	
		C	6.90-7.30	175-185				348006C040AS		348006C040CS	
		D	7.10-7.50	180-191				348006D040AS		348006D040CS	
6	150	B	6.60-7.00	168-178	X	6	150	348006B060AS	\$ 1,298.10	348006B060CS	\$ 1,239.40
		C	6.90-7.30	175-185				348006C060AS		348006C060CS	
		D	7.10-7.50	180-191				348006D060AS		348006D060CS	

3480AS / 3480CS TAP SLEEVE W/FLANGE OUTLET

Nominal Pipe Size		Letter Code	Pipe OD Range		BY	Branch Size		Stainless Steel Flange		Carbon Steel Flange	
Inches	MM		Inches	MM		Inches	MM	Part Number	List Price	Part Number	List Price
8	200	A	7.90-8.30	201-211	X	2	50	348008A020AS	\$ 1,160.80	348008A020CS	\$ 1,101.60
		B	8.60-9.05	218-230				348008B020AS		348008B020CS	
		C	9.05-9.45	230-240				348008C020AS		348008C020CS	
		D	9.20-9.60	234-244				348008D020AS		348008D020CS	
8	200	A	7.90-8.30	201-211	X	3	80	348008A030AS	\$ 1,172.70	348008A030CS	\$ 1,113.40
		B	8.60-9.05	218-230				348008B030AS		348008B030CS	
		C	9.05-9.45	230-240				348008C030AS		348008C030CS	
		D	9.20-9.60	234-244				348008D030AS		348008D030CS	
8	200	A	7.90-8.30	201-211	X	4	100	348008A040AS	\$ 1,178.60	348008A040CS	\$ 1,125.30
		B	8.60-9.05	218-230				348008B040AS		348008B040CS	
		C	9.05-9.45	230-240				348008C040AS		348008C040CS	
		D	9.20-9.60	234-244				348008D040AS		348008D040CS	
8	200	A	7.90-8.30	201-211	X	6	150	348008A060AS	\$ 1,304.20	348008A060CS	\$ 1,251.50
		B	8.60-9.05	218-230				348008B060AS		348008B060CS	
		C	9.05-9.45	230-240				348008C060AS		348008C060CS	
		D	9.20-9.60	234-244				348008D060AS		348008D060CS	
8	200	B	8.60-9.05	218-230	X	8	200	348008B080AS	\$ 1,628.50	348008B080CS	\$ 1,554.90
		C	9.05-9.45	230-240				348008C080AS		348008C080CS	
		D	9.20-9.60	234-244				348008D080AS		348008D080CS	
10	250	A	9.90-10.30	251-262	X	2	50	348010A020AS	\$ 1,260.60	348010A020CS	\$ 1,196.30
		B	10.70-11.10	272-282				348010B020AS		348010B020CS	
		C	11.10-11.50	282-292				348010C020AS		348010C020CS	
		D	11.40-11.80	290-300				348010D020AS		348010D020CS	
		E	11.80-12.20	300-310				348010E020AS		348010E020CS	
10	250	A	9.90-10.30	251-262	X	3	80	348010A030AS	\$ 1,273.50	348010A030CS	\$ 1,209.20
		B	10.70-11.10	272-282				348010B030AS		348010B030CS	
		C	11.10-11.50	282-292				348010C030AS		348010C030CS	
		D	11.40-11.80	290-300				348010D030AS		348010D030CS	
		E	11.80-12.20	300-310				348010E030AS		348010E030CS	
10	250	A	9.90-10.30	251-262	X	4	100	348010A040AS	\$ 1,279.90	348010A040CS	\$ 1,222.00
		B	10.70-11.10	272-282				348010B040AS		348010B040CS	
		C	11.10-11.50	282-292				348010C040AS		348010C040CS	
		D	11.40-11.80	290-300				348010D040AS		348010D040CS	
		E	11.80-12.20	300-310				348010E040AS		348010E040CS	
10	250	A	9.90-10.30	251-262	X	6	150	348010A060AS	\$ 1,390.10	348010A060CS	\$ 1,327.30
		B	10.70-11.10	272-282				348010B060AS		348010B060CS	
		C	11.10-11.50	282-292				348010C060AS		348010C060CS	
		D	11.40-11.80	290-300				348010D060AS		348010D060CS	
		E	11.80-12.20	300-310				348010E060AS		348010E060CS	
10	250	A	9.90-10.30	251-262	X	8	200	348010A080AS	\$ 1,762.70	348010A080CS	\$ 1,683.00
		B	10.70-11.10	272-282				348010B080AS		348010B080CS	
		C	11.10-11.50	282-292				348010C080AS		348010C080CS	
		D	11.40-11.80	290-300				348010D080AS		348010D080CS	
		E	11.80-12.20	300-310				348010E080AS		348010E080CS	

3480AS / 3480CS TAP SLEEVE W/FLANGE OUTLET

Nominal Pipe Size		Letter Code	Pipe OD Range		BY	Branch Size		Stainless Steel Flange		Carbon Steel Flange	
Inches	MM		Inches	MM		Inches	MM	Part Number	List Price	Part Number	List Price
10	250	B	10.70-11.10	272-282	X	10	250	348010B100AS	\$ 2,920.90	348010B100CS	\$ 2,788.80
		C	11.10-11.50	282-292				348010C100AS		348010C100CS	
		D	11.40-11.80	290-300				348010D100AS		348010D100CS	
		E	11.80-12.20	300-310				348010E100AS		348010E100CS	
12	300	A	11.90-12.30	302-312	X	2	50	348012A020AS	\$ 1,491.50	348012A020CS	\$ 1,415.40
		B	12.50-12.90	318-328				348012B020AS		348012B020CS	
		C	13.20-13.60	335-345				348012C020AS		348012C020CS	
		D	13.40-13.80	340-351				348012D020AS		348012D020CS	
		E	13.90-14.30	355-363				348012E020AS		348012E020CS	
12	300	A	11.90-12.30	302-312	X	3	80	348012A030AS	\$ 1,506.70	348012A030CS	\$ 1,430.60
		B	12.50-12.90	318-328				348012B030AS		348012B030CS	
		C	13.20-13.60	335-345				348012C030AS		348012C030CS	
		D	13.40-13.80	340-351				348012D030AS		348012D030CS	
		E	13.90-14.30	355-363				348012E030AS		348012E030CS	
12	300	A	11.90-12.30	302-312	X	4	100	348012A040AS	\$ 1,514.30	348012A040CS	\$ 1,445.80
		B	12.50-12.90	318-328				348012B040AS		348012B040CS	
		C	13.20-13.60	335-345				348012C040AS		348012C040CS	
		D	13.40-13.80	340-351				348012D040AS		348012D040CS	
		E	13.90-14.30	355-363				348012E040AS		348012E040CS	
12	300	A	11.90-12.30	302-312	X	6	150	348012A060AS	\$ 1,666.10	348012A060CS	\$ 1,590.70
		B	12.50-12.90	318-328				348012B060AS		348012B060CS	
		C	13.20-13.60	335-345				348012C060AS		348012C060CS	
		D	13.40-13.80	340-351				348012D060AS		348012D060CS	
		E	13.90-14.30	355-363				348012E060AS		348012E060CS	
12	300	A	11.90-12.30	302-312	X	8	200	348012A080AS	\$ 2,014.50	348012A080CS	\$ 1,923.40
		B	12.50-12.90	318-328				348012B080AS		348012B080CS	
		C	13.20-13.60	335-345				348012C080AS		348012C080CS	
		D	13.40-13.80	340-351				348012D080AS		348012D080CS	
		E	13.90-14.30	355-363				348012E080AS		348012E080CS	
12	300	A	11.90-12.30	302-312	X	10	250	348012A100AS	\$ 3,172.80	348012A100CS	\$ 3,029.30
		B	12.50-12.90	318-328				348012B100AS		348012B100CS	
		C	13.20-13.60	335-345				348012C100AS		348012C100CS	
		D	13.40-13.80	340-351				348012D100AS		348012D100CS	
		E	13.90-14.30	355-363				348012E100AS		348012E100CS	
12	300	B	12.50-12.90	318-328	X	12	300	348012B120AS	\$ 3,779.80	348012B120CS	\$ 3,608.80
		C	13.20-13.60	335-345				348012C120AS		348012C120CS	
		D	13.40-13.80	340-351				348012D120AS		348012D120CS	
		E	13.90-14.30	355-363				348012E120AS		348012E120CS	
14	350	A	15.00-15.40	381-391	X	2	50	348014A020AS	\$ 2,066.10	348014A020CS	\$ 1,960.70
		B	15.30-15.70	389-399				348014B020AS		348014B020CS	
		C	15.90-16.30	404-414				348014C020AS		348014C020CS	
		D	16.40-16.80	417-427				348014D020AS		348014D020CS	

3480AS / 3480CS TAP SLEEVE W/FLANGE OUTLET

Nominal Pipe Size		Letter Code	Pipe OD Range		BY	Branch Size		Stainless Steel Flange		Carbon Steel Flange	
Inches	MM		Inches	MM		Inches	MM	Part Number	List Price	Part Number	List Price
14	350	A	15.00-15.40	381-391	X	3	80	348014A030AS	\$ 2,087.20	348014A030CS	\$ 1,981.80
		B	15.30-15.70	389-399				348014B030AS		348014B030CS	
		C	15.90-16.30	404-414				348014C030AS		348014C030CS	
		D	16.40-16.80	417-427				348014D030AS		348014D030CS	
14	350	A	15.00-15.40	381-391	X	4	100	348014A040AS	\$ 2,097.70	348014A040CS	\$ 2,002.90
		B	15.30-15.70	389-399				348014B040AS		348014B040CS	
		C	15.90-16.30	404-414				348014C040AS		348014C040CS	
		D	16.40-16.80	417-427				348014D040AS		348014D040CS	
14	350	A	15.00-15.40	381-391	X	6	150	348014A060AS	\$ 2,300.00	348014A060CS	\$ 2,196.00
		B	15.30-15.70	389-399				348014B060AS		348014B060CS	
		C	15.90-16.30	404-414				348014C060AS		348014C060CS	
		D	16.40-16.80	417-427				348014D060AS		348014D060CS	
14	350	A	15.00-15.40	381-391	X	8	200	348014A080AS	\$ 3,022.90	348014A080CS	\$ 2,886.20
		B	15.30-15.70	389-399				348014B080AS		348014B080CS	
		C	15.90-16.30	404-414				348014C080AS		348014C080CS	
		D	16.40-16.80	417-427				348014D080AS		348014D080CS	
14	350	A	15.00-15.40	381-391	X	10	250	348014A100AS	\$ 4,091.60	348014A100CS	\$ 3,906.60
		B	15.30-15.70	389-399				348014B100AS		348014B100CS	
		C	15.90-16.30	404-414				348014C100AS		348014C100CS	
		D	16.40-16.80	417-427				348014D100AS		348014D100CS	
14	350	A	15.00-15.40	381-391	X	12	300	348014A120AS	\$ 4,846.40	348014A120CS	\$ 4,627.20
		B	15.30-15.70	389-399				348012B120AS		348014B120CS	
		C	15.90-16.30	404-414				348014C120AS		348014C120CS	
		D	16.40-16.80	417-427				348014D120AS		348014D120CS	
16	400	A	17.00-17.40	432-442	X	2	50	348016A020AS	\$ 2,407.80	348016A020CS	\$ 2,264.50
		B	17.40-17.80	442-452				348016B020AS		348016B020CS	
		C	17.70-18.10	450-460				348016C020AS		348016C020CS	
16	400	A	17.00-17.40	432-442	X	3	80	348016A030AS	\$ 2,412.80	348016A030CS	\$ 2,288.90
		B	17.40-17.80	442-452				348016B030AS		348016B030CS	
		C	17.70-18.10	450-460				348016C030AS		348016C030CS	
16	400	A	17.00-17.40	432-442	X	4	100	348016A040AS	\$ 2,422.80	348016A040CS	\$ 2,313.20
		B	17.40-17.80	442-452				348016B040AS		348016B040CS	
		C	17.70-18.10	450-460				348016C040AS		348016C040CS	
16	400	A	17.00-17.40	432-442	X	6	150	348016A060AS	\$ 2,625.00	348016A060CS	\$ 2,506.30
		B	17.40-17.80	442-452				348016B060AS		348016B060CS	
		C	17.70-18.10	450-460				348016C060AS		348016C060CS	
16	400	A	17.00-17.40	432-442	X	8	200	348016A080AS	\$ 3,126.60	348016A080CS	\$ 2,985.20
		B	17.40-17.80	442-452				348016B080AS		348016B080CS	
		C	17.70-18.10	450-460				348016C080AS		348016C080CS	
16	400	A	17.00-17.40	432-442	X	10	250	348016A100AS	\$ 4,341.50	348016A100CS	\$ 4,145.10
		B	17.40-17.80	442-452				348016B100AS		348016B100CS	
		C	17.70-18.10	450-460				348016C100AS		348016C100CS	

3480AS / 3480CS TAP SLEEVE W/FLANGE OUTLET

Nominal Pipe Size		Letter Code	Pipe OD Range		BY	Branch Size		Stainless Steel Flange		Carbon Steel Flange	
Inches	MM		Inches	MM		Inches	MM	Part Number	List Price	Part Number	List Price
16	400	A	17.00-17.40	432-442	X	12	300	348016A120AS	\$ 4,977.90	348016A120CS	\$ 4,752.80
		B	17.40-17.80	442-452				348016B120AS		348016B120CS	
		C	17.70-18.10	450-460				348016C120AS		348016C120CS	
18	450	A	18.40-18.80	467-478	X	2	50	348018A020AS	\$ 2,435.90	348018A020CS	\$ 2,311.60
		B	18.60-19.00	472-483				348018B020AS		348018B020CS	
		C	19.30-19.70	490-500				348018C020AS		348018C020CS	
		D	19.80-20.20	503-513				348018D020AS		348018D020CS	
18	450	A	18.40-18.80	467-478	X	3	80	348018A030AS	\$ 2,460.70	348018A030CS	\$ 2,336.40
		B	18.60-19.00	472-483				348018B030AS		348018B030CS	
		C	19.30-19.70	490-500				348008C030AS		348018C030CS	
		D	19.80-20.20	503-513				348018D030AS		348018D030CS	
18	450	A	18.40-18.80	467-478	X	4	100	348018A040AS	\$ 2,473.20	348018A040CS	\$ 2,361.30
		B	18.60-19.00	472-483				348018B040AS		348018B040CS	
		C	19.30-19.70	490-500				348018C040AS		348018C040CS	
		D	19.80-20.20	503-513				348018D040AS		348018D040CS	
18	450	A	18.40-18.80	467-478	X	6	150	348018A060AS	\$ 2,675.90	348018A060CS	\$ 2,554.80
		B	18.60-19.00	472-483				348018B060AS		348018B060CS	
		C	19.30-19.70	490-500				348018C060AS		348018C060CS	
		D	19.80-20.20	503-513				348018D060AS		348018D060CS	
18	450	A	18.40-18.80	467-478	X	8	200	348018A080AS	\$ 3,217.40	348018A080CS	\$ 3,071.90
		B	18.60-19.00	472-483				348018B080AS		348018B080CS	
		C	19.30-19.70	490-500				348018C080AS		348018C080CS	
		D	19.80-20.20	503-513				348018D080AS		348018D080CS	
18	450	A	18.40-18.80	467-478	X	10	250	348018A100AS	\$ 4,446.00	348018A100CS	\$ 4,244.90
		B	18.60-19.00	472-483				348018B100AS		348018B100CS	
		C	19.30-19.70	490-500				348018C100AS		348018C100CS	
		D	19.80-20.20	503-513				348018D100AS		348018D100CS	
18	400	A	18.40-18.80	467-478	X	12	300	348018A120AS	\$ 5,082.50	348018A120CS	\$ 4,852.60
		B	18.60-19.00	472-483				348018B120AS		348018B120CS	
		C	19.30-19.70	490-500				348018C120AS		348018C120CS	
		D	19.80-20.20	503-513				348018D120AS		348018D120CS	
20	500	A	21.40-21.80	544-554	X	2	50	348020A020AS	\$ 2,794.40	348020A020CS	\$ 2,651.80
		B	21.90-22.30	556-566				348020B020AS		348020B020CS	
20	500	A	21.40-21.80	544-554	X	3	80	348020A030AS	\$ 2,822.90	348020A030CS	\$ 2,680.30
		B	21.90-22.30	556-566				348020B030AS		348020B030CS	
20	500	A	21.40-21.80	544-554	X	4	100	348020A040AS	\$ 2,837.20	348020A040CS	\$ 2,708.90
		B	21.90-22.30	556-566				348020B040AS		348020B040CS	
20	500	A	21.40-21.80	544-554	X	6	150	348020A060AS	\$ 3,039.50	348020A060CS	\$ 2,902.00
		B	21.90-22.30	556-566				348020B060AS		348020B060CS	
20	500	A	21.40-21.80	544-554	X	8	200	348020A080AS	\$ 3,714.60	348020A080CS	\$ 3,546.60
		B	21.90-22.30	556-566				348020B080AS		348020B080CS	

3480AS / 3480CS TAP SLEEVE W/FLANGE OUTLET

Nominal Pipe Size		Letter Code	Pipe OD Range		BY	Branch Size		Stainless Steel Flange		Carbon Steel Flange	
Inches	MM		Inches	MM		Inches	MM	Part Number	List Price	Part Number	List Price
20	500	A	21.40-21.80	544-554	X	10	250	348020A100AS	\$ 5,028.60	348020A100CS	\$ 4,801.10
		B	21.90-22.30	556-566				348020B100AS		348020B100CS	
20	500	A	21.40-21.80	544-554	X	12	300	348020A120AS	\$ 5,665.00	348020A120CS	\$ 5,408.80
		B	21.90-22.30	556-566				348020B120AS		348020B120CS	
24	600	A	25.60-26.00	650-660	X	2	50	348024A020AS	\$ 2,928.70	348024A020CS	\$ 2,779.30
		B	26.20-26.60	665-676				348024B020AS		348024B020CS	
24	600	A	25.60-26.00	650-660	X	3	80	348024A030AS	\$ 2,958.70	348024A030CS	\$ 2,809.20
		B	26.20-26.60	665-676				348024B030AS		348024B030CS	
24	600	A	25.60-26.00	650-660	X	4	100	348024A040AS	\$ 2,973.50	348024A040CS	\$ 2,839.00
		B	26.20-26.60	665-676				348024B040AS		348024B040CS	
24	600	A	25.60-26.00	650-660	X	6	150	348024A060AS	\$ 3,175.70	348024A060CS	\$ 3,032.10
		B	26.20-26.60	665-676				348024B060AS		348024B060CS	
24	600	A	25.60-26.00	650-660	X	8	200	348024A080AS	\$ 3,865.60	348024A080CS	\$ 3,690.80
		B	26.20-26.60	665-676				348024B080AS		348024B080CS	
24	600	A	25.60-26.00	650-660	X	10	250	348024A100AS	\$ 5,194.00	348024A100CS	\$ 4,959.00
		B	26.20-26.60	665-676				348024B100AS		348024B100CS	
24	600	A	25.60-26.00	650-660	X	12	300	348024A120AS	\$ 5,835.00	348024A120CS	\$ 5,571.10
		B	26.20-26.60	665-676				348024B120AS		348024B120CS	

CUSTOM SIZES AVAILABLE.

HOW TO ORDER: Choose the Pipe Size Letter Code corresponding to a Pipe OD Range that covers the Pipe OD to be tapped and then specify the desired branch size. EXAMPLE: 12" C900 PVC O.D. 13.20 with 6 inch Branch. Order 3480AS Carbon Steel Flange 12C x 6. **Part Number:** 348012C060CS

For Outlet Sizes 14" and above the tapping valve being used must be advised to PowerSeal in order to guarantee proper alignment recess mating.



COATING OPTION: Anti-Seizing/Galling protection. Available for both Alloy and SST application. Inquire with sales for cost and availability