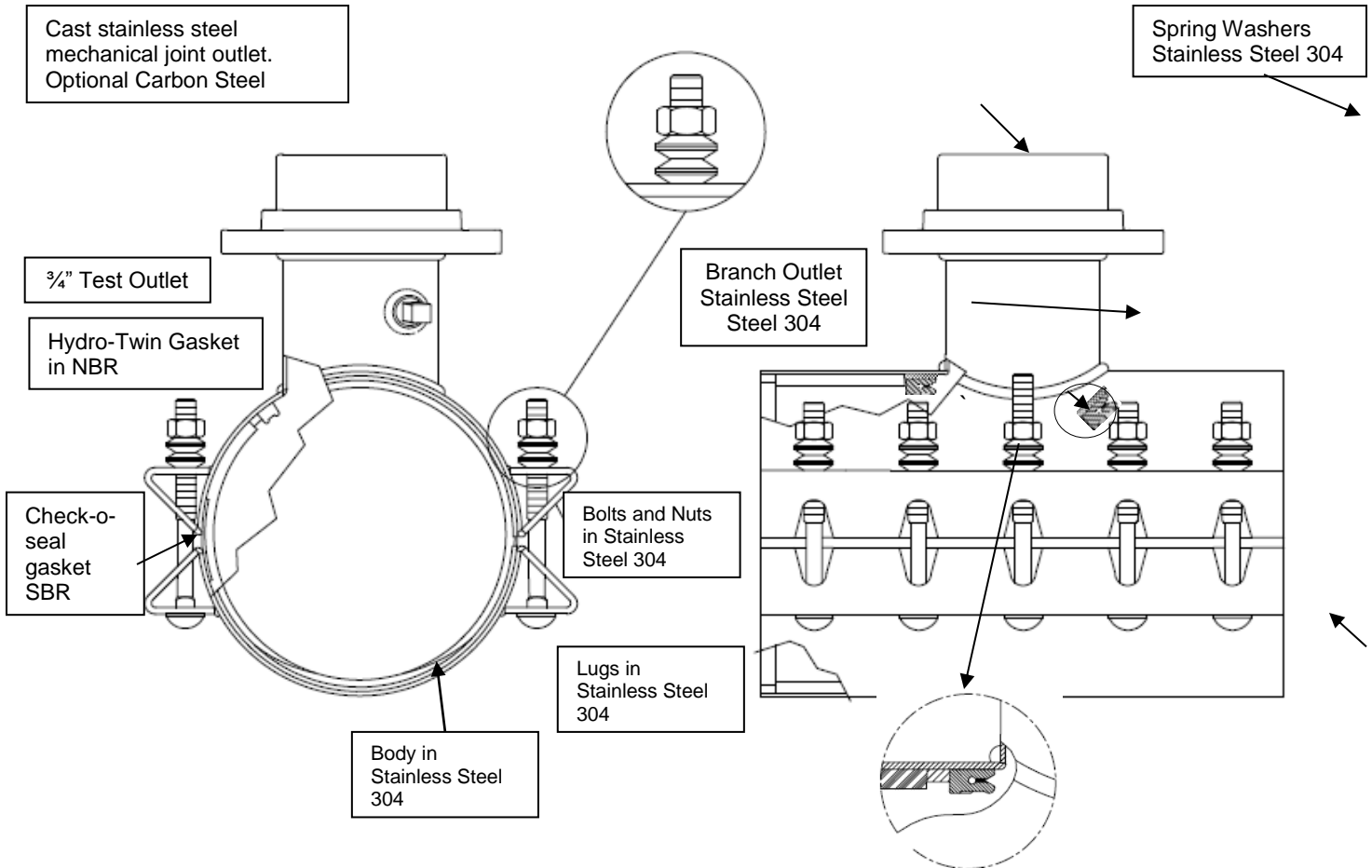


Scope

The intent of this specification is to receive a Stainless Steel Tapping Sleeve for high density polyethylene pipe (HDPE). The tapping sleeve furnished shall be equivalent to Model 3490MJ-PE Tapping Sleeve as manufactured by PowerSeal Pipeline Products Corporation.



Branch Size	A (in)	B (in)	C (in)	Bolt Qty	Working Pressure (PSI)	Test Pressure (PSI)
2	12	3	3 11/32	8	150	225
3	12	4 1/2	3 11/32	8	150	225
4	16	5 1/2	4 11/32	10	150	225
6	16	5 7/8	6 11/32	10	150	225
8	20	6 3/16	8 11/32	12	150	225
10	24	6 39/64	10 11/32	16	100	200
12	30	6 3/4	12 11/32	20	100	200

For all outlets up to and including 8" the working pressure is 150PSI, for all outlets above 8" the working pressure is 100PSI.



Features and Benefits

1. The complete Tapping Sleeve is constructed of 304 Stainless Steel (unless optional carbon steel flange is ordered) and shall be fully passivated to return the welded stainless steel to its original corrosion resistance state.
2. The Tapping Sleeve shall be factory hydrostatically tested on pipe to verify proper fit and weld integrity. The duration of the test shall be a minimum of three (3) minutes with zero leakage allowed. **The Tapping Sleeve shall be rated for a minimum working pressure of 150psi for sleeves up through and including 8” outlets. For outlets larger than 8” the minimum working pressure will be 100psi.**
3. Built in range allows reduction of inventory.
4. Spring washers allow even torque to be applied and maintained during compression and expansion of the HDPE pipe under ambient conditions.
5. Drop in track head bolts with Stainless Steel nuts allow assembly in either direction, Xylon coated nuts prevent cross threading and galling.
6. 360° complete full circle “Check-o-seal” gasket provides protection against leaks beyond hydrotwin area.
7. The branch shall be a minimum of 3/8” larger diameter than nominal to allow the use of a full size cutter.

Design and Material Specification

1. The tapping sleeve shall meet or exceed all material specifications as listed below.
2. The sleeve meets all AWWA C223 requirements.
3. The tapping sleeve shall have an MJ gasket SBR, branch sealing hydrotwin, and complete circle gasket all permanently attached to the sleeve at the factory.
 The branch sealing gasket shall be our patented Hydro-Twin design in NBR (-25F° - +248F°), and the complete circle gasket shall be our patented check-o-seal design in SBR (-25F° - +200F°).
4. Branch to flange and branch to shell connections are double welded. Outer structural weld GMAW (mig) and inner fusion weld GTAW (tig).
5. Lugs shall be structurally welded GMAW (mig) to the shell and the test outlet shall be fusion welded GTAW (tig) to the branch inside and out.
6. The Armor plates shall be bonded to the gasket.
7. There shall be no paper or plastic adhesive labels attached to the tapping sleeve, any information appearing on the sleeve shall be stenciled.

Material Specifications		
Part Name	Material	Mat. specs
MJ Flange Outlet	Stainless Steel type 304 or Carbon Steel	AWWA C115
MJ Gasket	SBR	AWWA C115AP
Branch	Stainless Steel type 304	ASTM A240
Test Plug	Stainless Steel type 304	ANSI B2.1
Shell	Stainless Steel type 304	ASTM A240
Lugs	Stainless Steel type 304	ASTM A240
Hydro-twin	NBR	ASTM D2000
Gasket	SBR	ASTM D2000
Bolt	Stainless Steel type 304	ASTM A193
Nuts	Stainless Steel type 304	ASTM A194
Spring Washers	Stainless Steel type 304	ASTM A666



3490MJ-PE
Tapping Sleeve For HDPE Pipe with MJ outlet
304 Stainless Steel
Certified to NSF/ANSI-61

