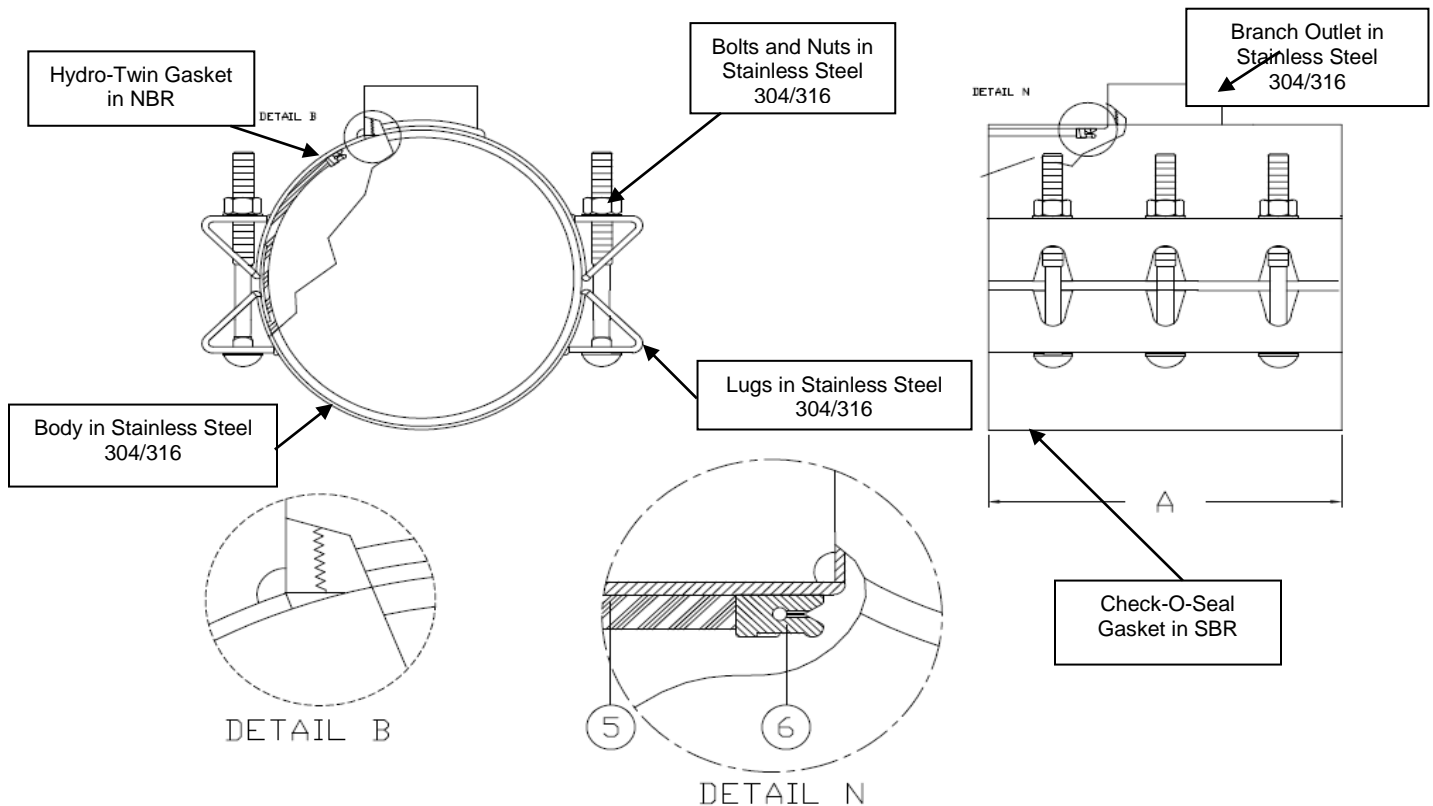


Features and Benefits

1. The complete Tapping Sleeve is constructed of 304/316 Stainless Steel and shall be passivated so as to return the welded stainless steel to its original corrosion resistant state.
2. Drop in track head bolts with Stainless Steel nuts allow assembly in either direction.
3. 360° complete full circle “Check-o-seal” gasket provides protection against leaks beyond Hydrotwin areas.
4. The branch shall be a minimum of 3/8” larger diameter than nominal to allow the use of a full size cutter.
5. Stainless Steel and Carbon Steel flanges outlets available.



Scope

The intent of this specification is to receive a Stainless-Steel Tapping Sleeve. The tapping sleeve furnished shall be equivalent to Model 3495AS Tapping Sleeve as manufactured by PowerSeal Pipeline Products Corporation.

Outlet Size	A (in)	Bolt Qty	Working Pressure (PSI)	Test Pressure (PSI)
3/4	12	8	200	300
1	12	8	200	300
1 1/4	12	8	200	300
1 1/2	12	8	200	300
2	12	8	200	300
3	12	8	200	300
4	16	10	200	300
6	16	10	200	300
For 30 inch and up pipe diameter the working pressure is 100PSI working regardless of branch size.				

Design and Material Specification

- The tapping sleeve shall meet or exceed all material specifications as listed below:
 1. The sleeve meets all AWWA C223 requirements.
 2. The tapping sleeve shall have a flange gasket SBR, branch sealing hydrotwin, and complete circle gasket all permanently attached to the sleeve at the factory. The branch sealing gasket shall be our patented Hydro-Twin design in NBR (-25F° - +248F°), and the complete circle gasket shall be our patented check-o-seal design in SBR (-25F° - +200F°).
 3. Outlet to body connection is double welded. Outer structural weld GMAW (FCAW) and inner fusion weld GTAW (TIG).
 4. Lugs shall be structurally welded GMAW (FCAW) to the shell and the.
 5. The Armor plates shall be bonded to the gasket.
 6. There shall be no paper or plastic adhesive labels attached to the tapping sleeve, any information appearing on the sleeve shall be stenciled.



3495AS
Tapping Sleeve with Threaded Outlet
304 Stainless
Certified to NSF/ANSI-61



Material Specifications		
Part Name	Material	Mat. specs
Outlet	Stainless Steel type 304	ANSI B16.11
Shell	Stainless Steel type 304	ASTM A240
Lugs	Stainless Steel type 304	ASTM A240
Hydro-twin	NBR	ASTM D2000
Gasket	SBR	ASTM D2000
Bolt	Stainless Steel type 304	ASTM A194
Nuts	Stainless Steel type 304	ASTM A193

