

3531 INSTA-FLANGE ADAPTER (LIGHT DUTY)

BODY CASTING: Ductile Iron per ASTM A536.

SET SCREWS: AISI 4140 Heat Treated Steel.

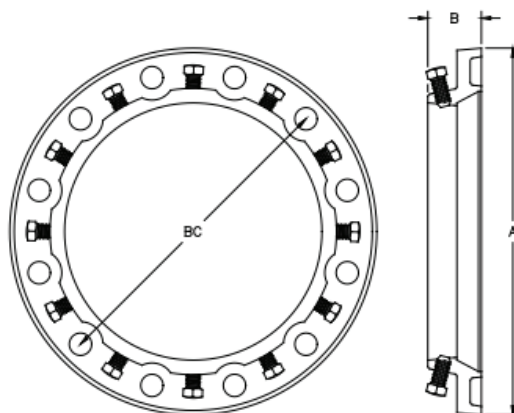
GASKET: SBR Mechanical Joint design per ASTM D2000. Suitable for mild acids, water, and salt media with a temperature range of -25° F to +200°F.

FINISH: Epoxy.

FLANGE DRILLING: ANSI B16.1 125# / ANSI B16.5 150#.



Flange Size (125# Flange)		Type of Pipe	Pipe OD Range		Flange OD Dim - A		Body Length Dim - B		Bolt Circle Dim - C		Set Screws		Working Pressure	Approx. Weight		Part Number	List Price
Inches	MM		Inches	MM	Inches	MM	Inches	MM	Inches	MM	Qty.	size		lbs.	kgs		
2	50	A Steel	2.38	60	6	152	1.8	46	4.8	122	2	1/2	200	4.8	2.2	35310200000S	\$ 42.80
		B Ductile Iron	2.50	64												35310200000C	
3	75	A Steel	3.50	89	7.5	191	1.8	46	6	152	4	1/2	200	6	2.7	35310300000S	\$ 52.00
		B Ductile Iron	3.80	101												35310300000C	
4	100	A Steel	4.50	114	9.0	229	1.8	46	7.5	191	4	1/2	200	7.4	3.4	35310400000S	\$ 70.40
		B Ductile Iron	4.80	122												35310400000C	
6	150	A Steel	6.63	168	11.0	279	1.8	46	9.5	241	8	1/2	200	10	4.5	35310600000S	\$ 87.00
		B Ductile Iron	6.90	101												35310600000C	
8	200	A Steel	8.63	219	13.5	343	2.3	57	11.8	298	8	5/8	200	17	7.7	35310800000S	\$ 103.50
		B Ductile Iron	9.05	230												35310800000C	
10	250	A Steel	10.75	282	16.0	406	2.3	57	14.3	362	12	5/8	175	29	13	35311000000S	\$ 189.00
		B Ductile Iron	11.10	101												35311000000C	
12	300	A Steel	12.75	324	19.0	483	2.3	57	17.0	432	12	5/8	175	39.6	18	35311200000S	\$ 221.40
		B Ductile Iron	13.20	335												35311200000C	



HOW TO ORDER: Specify Model Number, Pipe Size with Letter Code. **EXAMPLE:** 6" Flanged Valve to 6" Ductile Iron O.D. 6.90. Order 3531 - 6B. **Part Number:** 35310600000C .