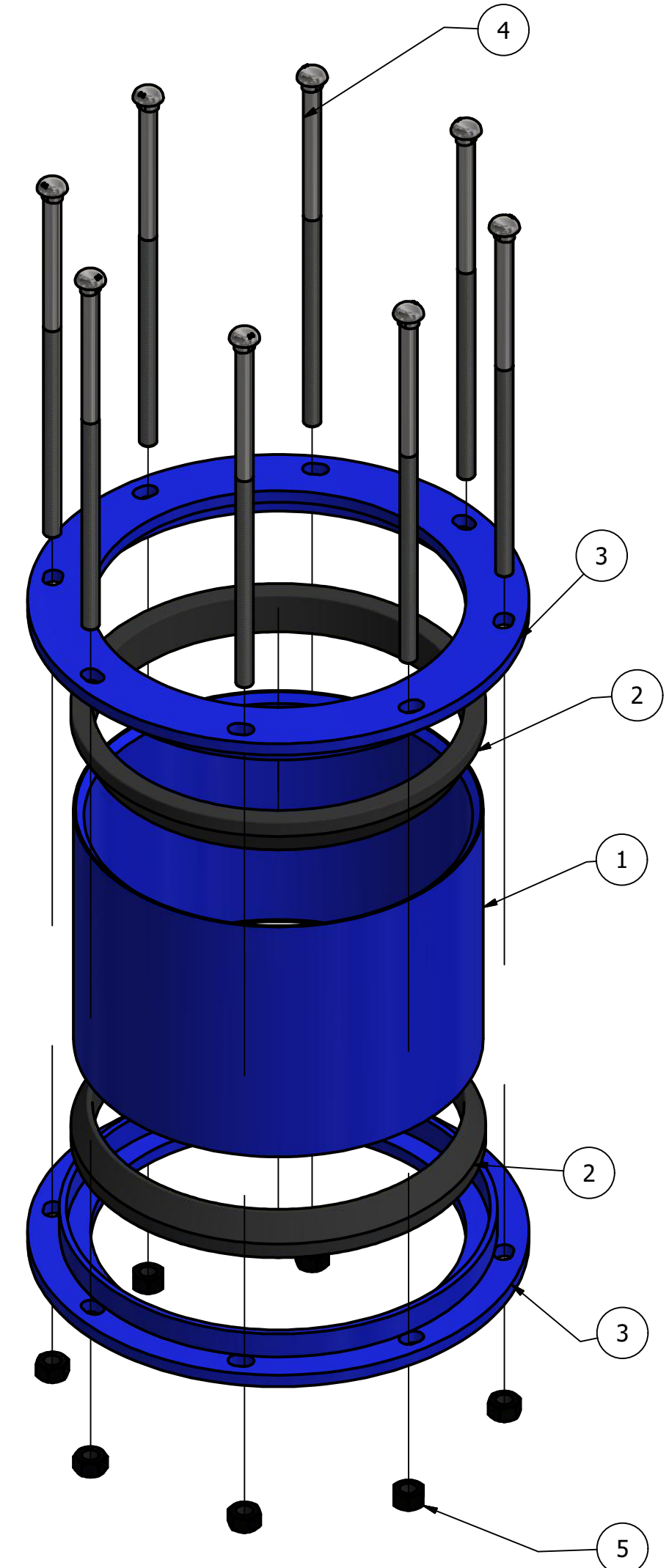
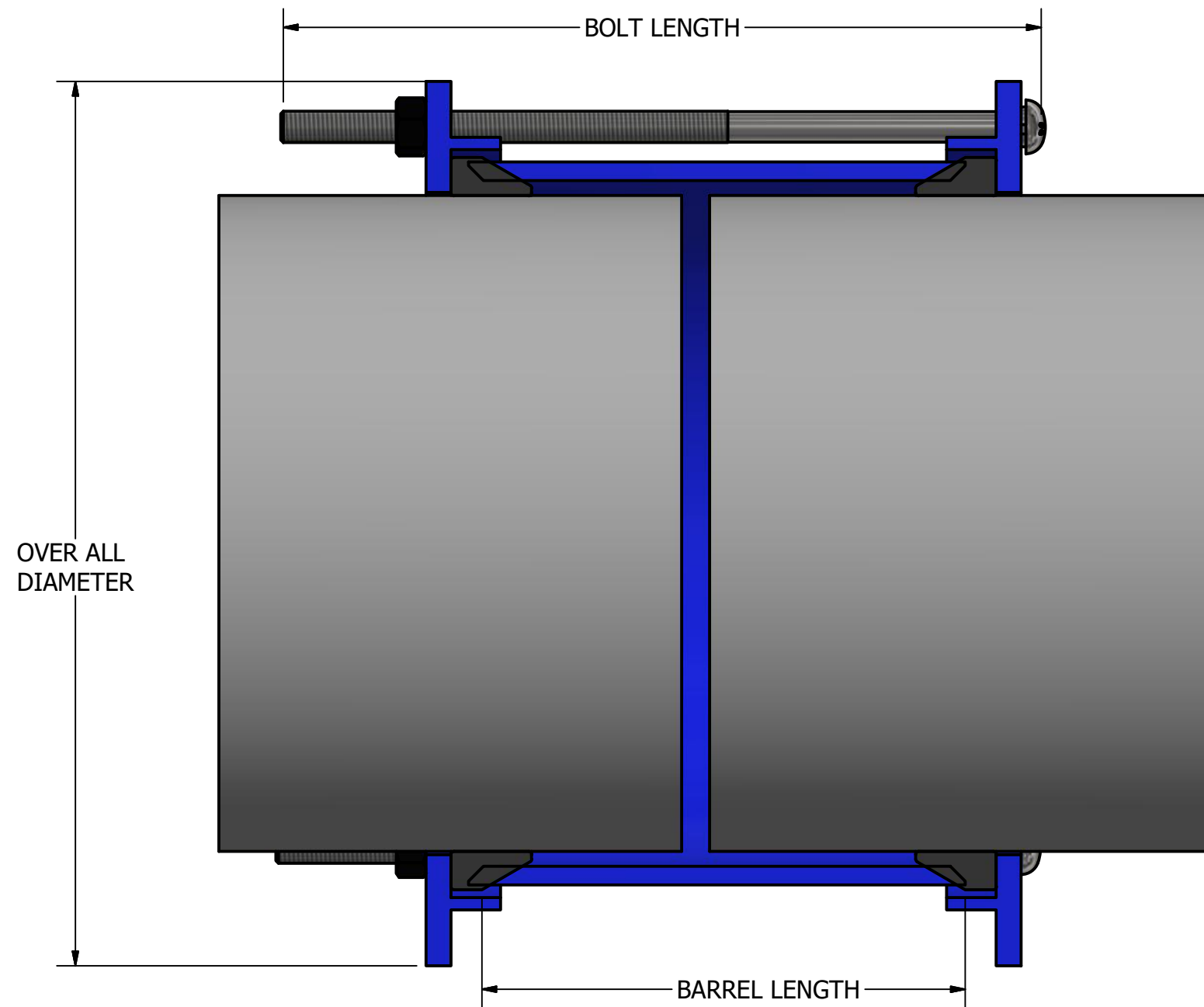


3538 Steel Fabricated Transition Coupling

Steel Pipe Sizes 4" - 48"

BILL OF MATERIALS				
ITEM	QTY	PART NUMBER	MATERIAL	MATERIAL SPEC
1	1	Center Barrel	Carbon Steel	ASTM A36
2	2	Gaskets	NBR	ASTM D2000
3	2	Glands	Carbon Steel	ASTM A36
4	*	Bolts	Low alloy steel / Stainless steel 304-316	ASTM A325/ASTM A193
5	*	Heavy Hex Nut	Low alloy steel / Stainless steel 304-316	ASTM A536 / ASTM A194

Finish: Epoxy lined and coated



PIPE OD	Barrel length	Barrel thickness	Bolt size/ length	Bolt qty	Outside diameter
4.50	7.00 in	SCH 40	5/8 x 11"	4	9.10 in
6.63	7.00 in	1/4	5/8 x 11"	5	11.23 in
8.63	7.00 in	3/8	5/8 x 11"	6	13.23 in
10.75	7.00 in	3/8	5/8 x 11"	7	15.35 in
12.75	7.00 in	3/8	5/8 x 11"	8	17.35 in
14.00	7.00 in	3/8	5/8 x 11"	9	18.60 in
16.00	7.00 in	3/8	3/4 x 11"	10	20.60 in
18.00	7.00 in	3/8	3/4 x 11"	12	22.60 in
20.00	7.00 in	3/8	3/4 x 11"	12	24.60 in
24.00	7.00 in	3/8	3/4 x 11"	14	28.60 in
30.00	10.00 in	3/8	3/4 x 15"	16	34.60 in
36.00	10.00 in	3/8	3/4 x 15"	16	40.60 in
42.00	10.00 in	3/8	3/4 x 15"	18	46.60 in
48.00	10.00 in	3/8	3/4 x 15"	20	52.60 in

CUSTOMER INFO
 Company name: _____
 Contact: _____ Telf #: _____
 Notes: _____

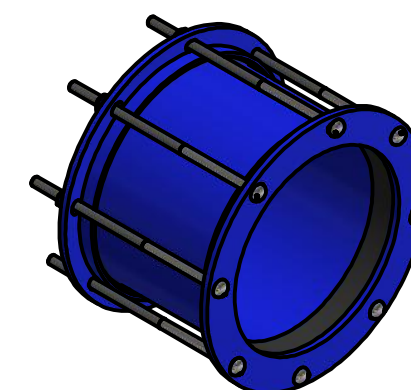
PRODUCTION RELEASE


Approved as submitted hereon
 Approved as noted and revised hereon
 REJECTED: _____
 Release authorized by: _____
 Release date: _____ P.O.# _____

All Dimensions are in inches. Flexible couplings do not provide against pull out of pipe
 Couplings meet the provision of ANSI/AWWA C219-97 (Coupling Standard for plain end pipe)
 Couplings must be restrained to prevent end thrust from causing the coupling to move

Working pressure: Up to 150 PSI
 For higher pressures ratings, call our representatives 1-800-800-0932

Torque requirements
 5/8" Bolts: 70 - 100 ft.lbs
 3/4" Bolts: 100 - 140 ft.lbs





PowerSeal

PIPELINE PRODUCTS CORPORATION

MODEL **3538 Fabricated Coupling**
Steel pipe sizes 4" - 48"

SIZE	Wichita Falls, Texas	DWG NO	REV
DRAFTSMAN / DATE		SHEET 1 OF 1	