

INSTALLATION SHEET - COUPLINGS

MODEL 3538 - FABRICATED TRANSITION COUPLING

Quality Control Department SAFETY FIRST -

Always use cave-in protection, gloves, sturdy work boots, and eye protection when joining pipes.



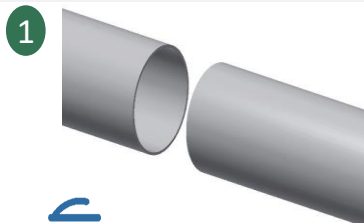
GENERAL NOTES:

- Use cave-in protection during excavation and back-fill operations.
- Verify Pipe O.D. to make certain that the correct Coupling is being installed.
- Keep bolt threads clean and free from nicks, dents or other damage.
- If conditions permit, mark the pipe for a reference point to properly position the coupling.
- Clean and lubricate gaskets with a soapy water solution.
- Before starting, the installer shall determine the suitability of the product for his intended use and the installer assumes all risk and liability for the application of the product.

OTHER INFO:

- **FOR SS BOLTS:** To avoid galling during installation, the threads **MUST BE KEPT CLEAN AND FREE FROM DAMAGE**. The fitting should not be thrown around or otherwise be abused, i.e. stored on truck without box, dropped from top of ditch, etc. A deep socket and ratchet wrench is recommended.
- **WARNING:** this product does not restrain axial pipe movement.
- To prevent coupling movement position pipe stop between the pipes and firmly tighten. (Optional upon request)
- **NOTE:** Gaskets have a design allowance to fit a variety of outside diameters and may appear loose on some classes of pipe prior to tightening bolts.

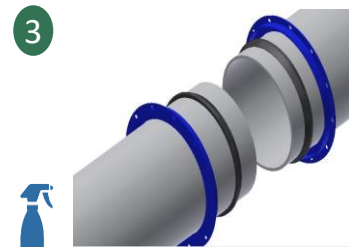
RECOMMENDED TORQUE	
Bolt Diameter	Torque (ft-lb)
5/8"	70-100
3/4"	100-140



Thoroughly clean the pipe surface, and inspect the area where the coupling will be installed for flaws, i.e., gouges, protrusions, excessive corrosion, etc. Irregular surfaces should be avoided to assure maximum gasket sealing.



Check the main outside diameter (OD) and confirm that it falls within the coupling pipe OD range. Place a reference mark on both pipe ends to ensure the coupling will be centered. There should be a minimum of 2" of pipe insertion per coupling end.

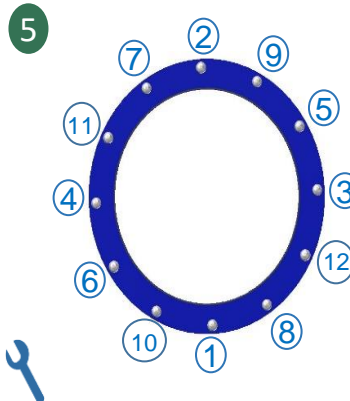


Lubricate pipe and gasket with soap/water solution and begin installation by placing one gland and one fully lubricated gasket over each pipe end.

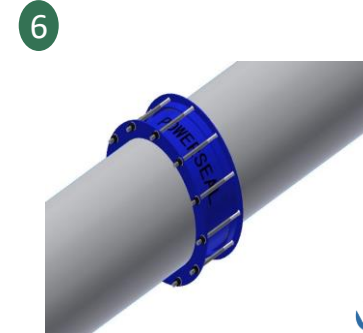


Position the center barrel over the pipe (position barrel within the two reference marks) and attach gasket & gland assembly at both ends of the center barrel.

Note: Maintain a recommended gap between pipe ends of 1/4" to 1/2" for 7" sleeve and 1/2" to 1 1/4" for 10" sleeve when centering coupling over pipes ends.



Install and evenly tighten bolts and nuts to recommended torque alternating between opposite sides of coupling as shown in the image.



Pressurize the line, check the leakage, and re-torque if necessary. *Pressure test all joints before covering coupling.