

INSTALLATION SHEET - COUPLINGS

MODEL 3563 – FABRICATED DISMANTLING JOINTS

Quality Control Department SAFETY FIRST

Always use cave-in protection, gloves, sturdy work boots, and eye protection when joining pipes.

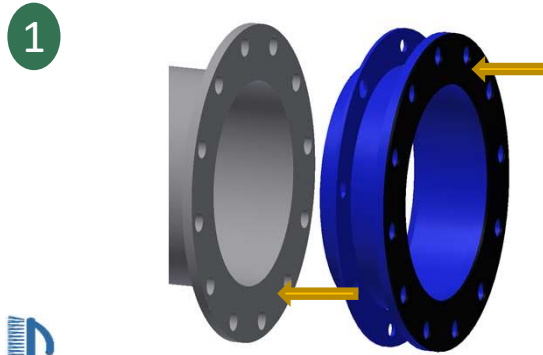


GENERAL NOTES:

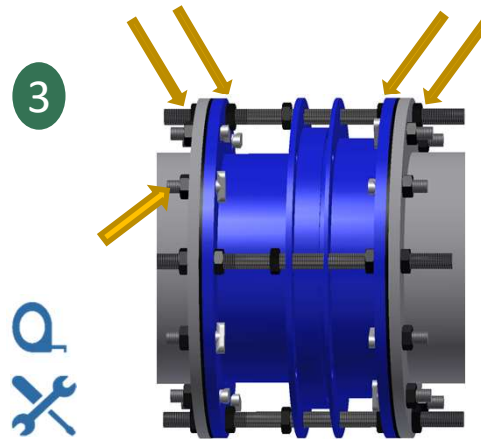
- Use cave-in protection during excavation and back-fill operations.
- Keep bolt threads clean and free from nicks, dents or other damage.
- Clean and lubricate gaskets.
- Before starting, the installer shall determine the suitability of the product for his intended use and the installer assumes all risk and liability for the application of the product.

OTHER INFO:

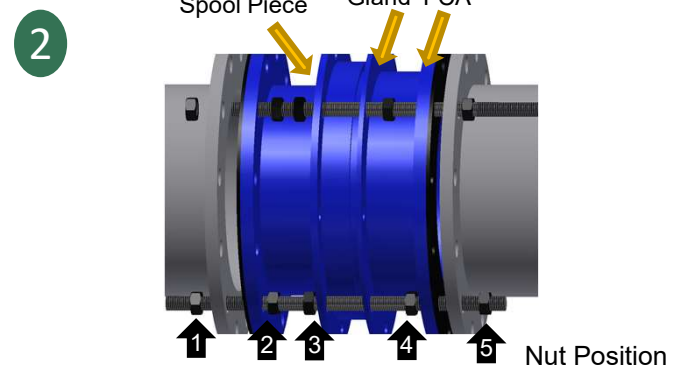
- **FOR SS BOLTS:** To avoid galling during installation, the threads **MUST BE KEPT CLEAN AND FREE FROM DAMAGE**. The fitting should not be thrown around or otherwise be abused, i.e. stored on truck without box, dropped from top of ditch, etc. A deep socket and ratchet wrench is recommended.
- **NOTE:** Dismantling joints provide a longitudinal adjustment during installation provided by the telescoping action of the flanged spool piece into the flanged coupling adapter.



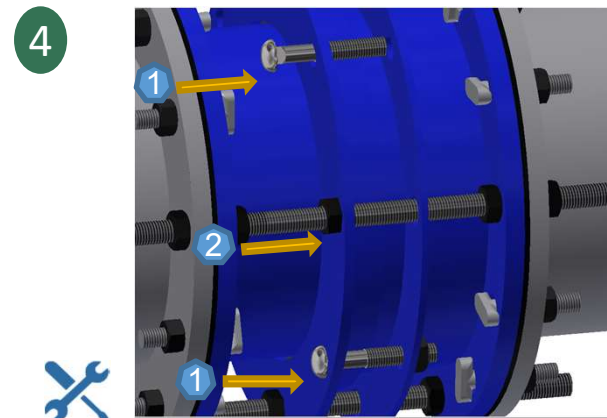
Thoroughly clean each flange face and face gasket (not provided) to be joined, and inspect the area where the flanges will be installed for flaws, i.e., gouges, protrusions, excessive corrosion, etc. Irregular surfaces should be avoided to assure maximum gasket sealing.



After running the tie rods through the dismantling joint and corresponding flanges, bolt the FCA body to the pipe flange. Pull and adjust the length of the dismantling joint to meet with the opposite pipe flange and bolt it down. Tighten the nuts on the insides of the flange, then install outside nuts to tie rods and tighten.



Begin the installation by positioning the dismantling joint between the mating flanges. Run the tie rods through the larger holes placing nuts in the correct places. Make sure there are nuts on each side of the mating flanges and another nut between the spool piece flange and the gland. You may need to adjust the tie rods and nuts for all components to fit in the correct positions. 5 nuts per tie rod.



With the dismantling joint bolted into place, Insert gland bolts into the smaller holes of the gland and tighten down to **70ft.lbs.** compressing the gasket around the spool piece wall for a watertight seal. Then tighten the nuts on the tie rods around the gland .

INSTALLATION SHEET - COUPLINGS

MODEL 3563 – FABRICATED DISMANTLING JOINTS

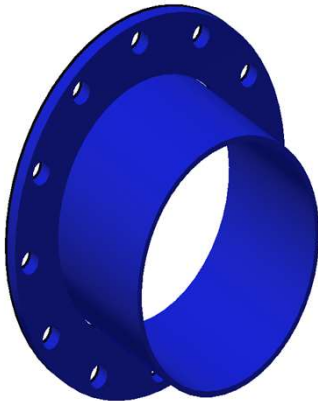
Quality Control Department SAFETY FIRST Always use cave-in protection, gloves, sturdy work boots, and eye protection when joining pipes.



FCA & GLAND



FLANGED SPOOL PIECE



TWO PIECES OF THE DISMANTLING JOINT SEPERATED.

PRE-INSTALL CHECKLIST:

DID YOU:

- Check flanges for correct size 3563? [Y] [N]
- Check the length of the 3563 to make sure it will fit in the space allocated? [Y] [N]
- Clean pipe surface thoroughly? [Y] [N]
- Verify Proper Torque Required? [Y] [N]

WARRANTY CHECKLIST (*):

- Date of Installation ___/___/___
- Time of Installation _____ [AM] [PM]
- (PowerSeal recommends torqueing in 25 ft-lb increments)
 - * Torque Applied: _____ ft-lbs
- Was standard re-torqueing applied 5 minutes after reaching torque requirements? [Y] [N]

• Signature of On-Site Lead man: _____

*** Must be completed on day of installation to Validate Warranty**