

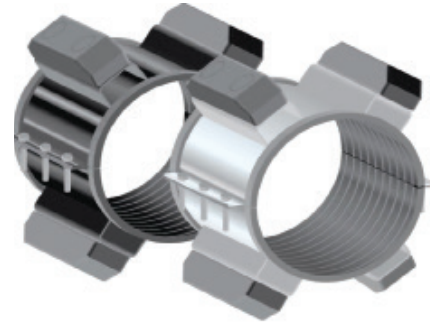
## MODEL 4810 CASING CHOCK

**RISER:** Type 304 (18-8) Stainless Steel per ASTM A240 or Carbon Steel per ASTM A36.

**LINER:** Elastomeric PVC per ASTM D149.

**CHOCK SKID:** Glass Reinforced Nylon per ASTM D638.

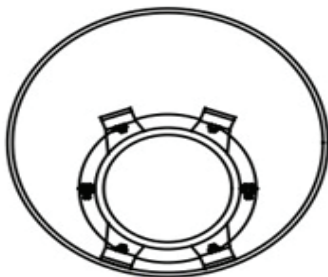
**FASTENERS:** Type 304 (18-8) Stainless Steel per ASTM A193.



PLEASE CONSULT FACTORY FOR PRICING

The Model 4810 Casing Chock is a versatile pipeline fitting that can be custom engineered for most carrier/casing pipe applications such as:

- Correcting improperly graded sewer casings.
- Centering pipeline rehabilitation slip lining carriers.
- Positioning insulated pipe without damaging insulation.
- Placing gravity sewer lines to on-grade requirements.



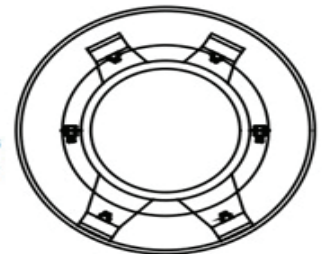
**STANDARD**

**Standard**

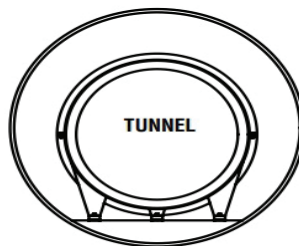
The standard design allows the carrier to clear the bell only.

**Center Restrained**

The Centered option positions and restrains the main carrier in the center of the casing to provide maximum space for other use and maintain grade.



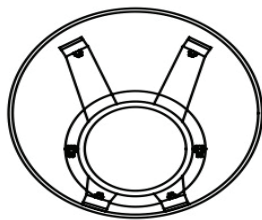
**CENTERED**



**TUNNEL**

**Tunnel Chocks**

Large diameter casing tunnels which previously required track systems for the carrier pipe can be accommodated with casing chocks designed to provide full support to a concrete "tunnel floor".

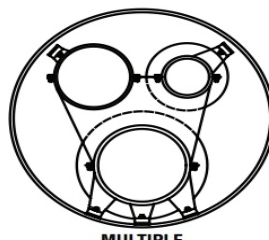


**BOTTOM**

**Bottom Restrained**

Bottom Restrained Chock allows for the clearance of the Bell only yet provides restraint from floating within the casing.

**MultiCarrier**  
Allows casing pipe to be fitted with two or more carrier pipes and/or electrical or communication conduits.



**MULTIPLE**

## MODEL 4810 CASING CHOCK



When ordering casing chocks please provide the following information:

- Engineering Firm Name, Job Name, and quote number.
- Outside Diameter and manufacturer of Carrier Pipe.
- Type of Joint, i.e. Mechanical Joint, Push-On, Flanged, Restrained, etc.
- Inside Diameter and Type of Casing Pipe.
- Length of Casing and/or Quantity of Chocks.
- Casing Chock Design, ie. Standard, Center restrained for example.
- Special installation requirements such as Leak Detection Cable, Special Clearance, etc.

**HOW TO ORDER:** To order a spacer to carry a 6" C900 pipe inside 16" 1/4" wall casing pipe order **Part Number:** 4810690155CA

First four numbers are Model Number, next three are Carrier Pipe OD, next three are Casing Pipe ID, first letter is the design (S= Standard, C= Centered, B= Bottom), second letter is the Chock width (A= 8", B= 12").

Add -CS after this to denote Carbon Steel Chocks. Part Number: 4810690155CA-CS