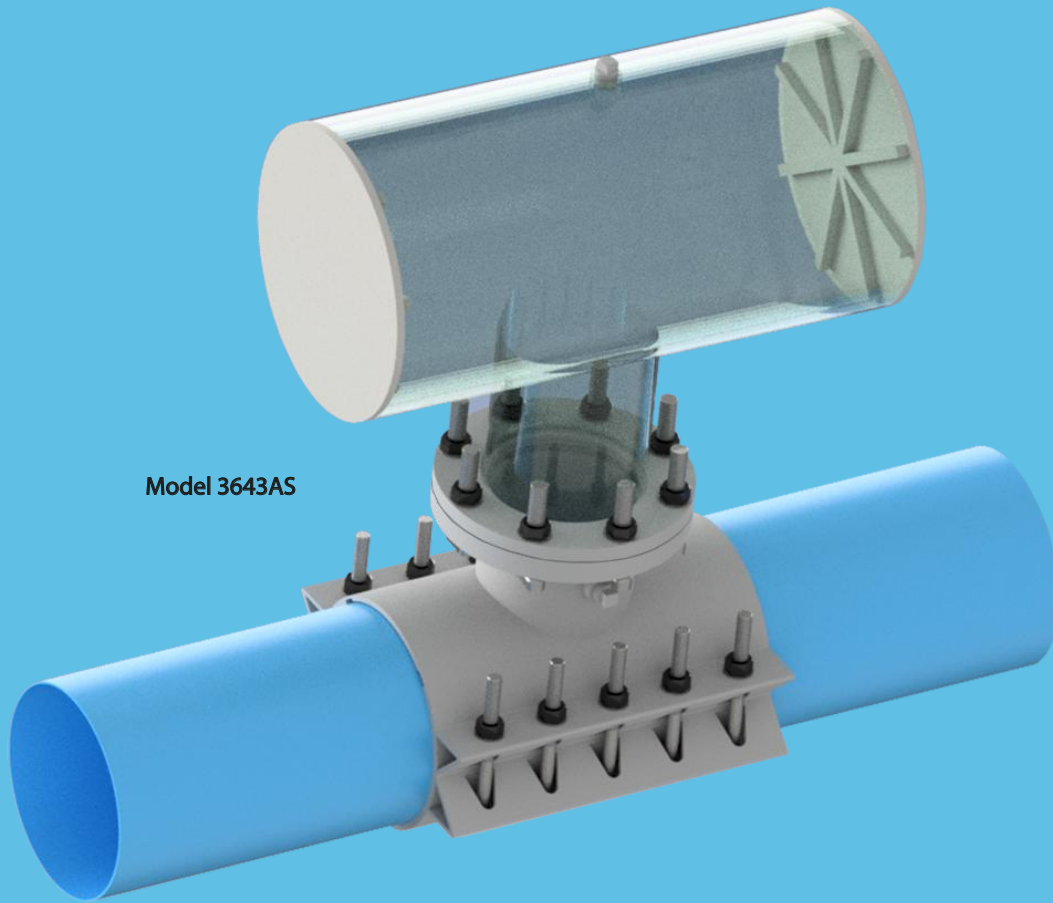




PowerSeal
PIPELINE PRODUCTS CORPORATION

3643AS

SURGE SUPPRESSOR 3643AS/3643MJ



Model 3643AS



THE ISSUE

What really causes water breaks? Water hammer is a pressure surge or wave caused when a fluid (water or gas) in motion is forced to stop or change direction suddenly. The shock waves occur when valves, hydrants or pumps close suddenly at the end of a pipeline system, and a pressure wave propagates in the pipe.

THE FIX

This pressure wave can cause major problems, from noise and vibration to pipe collapse. It is possible to reduce the effects of the water hammer pulses with the installation of the PowerSeal Model 3643AS Surge Suppressor.

The Model 3643AS Surge Suppressor works when installed at various points throughout the pipeline system.

1-800-800-0932

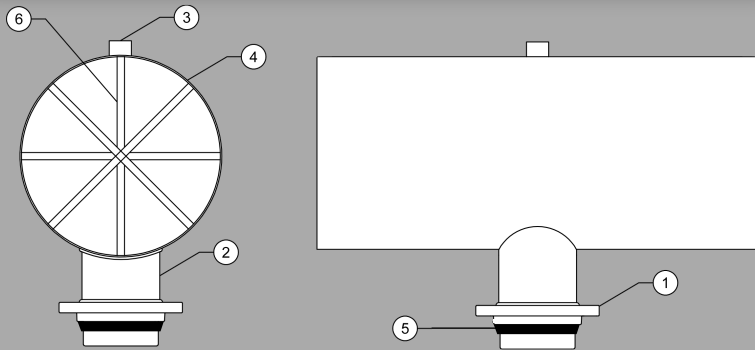
www.powerseal.com • 701 Pleasant View Drive Wichita Falls, TX 76306 • 940-767-5566 fax: 940-723-8378

FITTING SOLUTIONS FOR HARSH ENVIRONMENTS

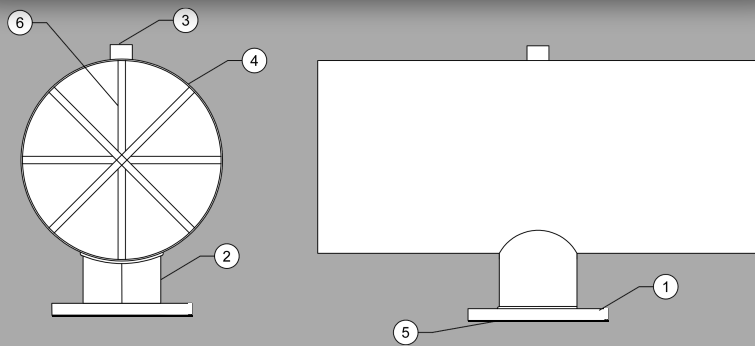


COMPONENT REFERENCE

MODEL 3643MJ



MODEL 3643AS



MATERIAL SPECIFICATIONS			
ITEM	PART	MATERIAL	MAT. SPEC.
1	Flange/MJ Flange Outlet	Stainless Steel type 304	AWWA C207/AWWA C115
2	Branch	Stainless Steel type 304	ASTM A240
3	Test Plug	Stainless Steel type 304	ANSI B2.1
4	Body	Stainless Steel type 304	ASTM A240
5	Flange/MJ Gasket	NBR	ASTM D2000
6	Reinforcements	Stainless Steel type 304	ASTM A240

INSTALLATION GUIDE

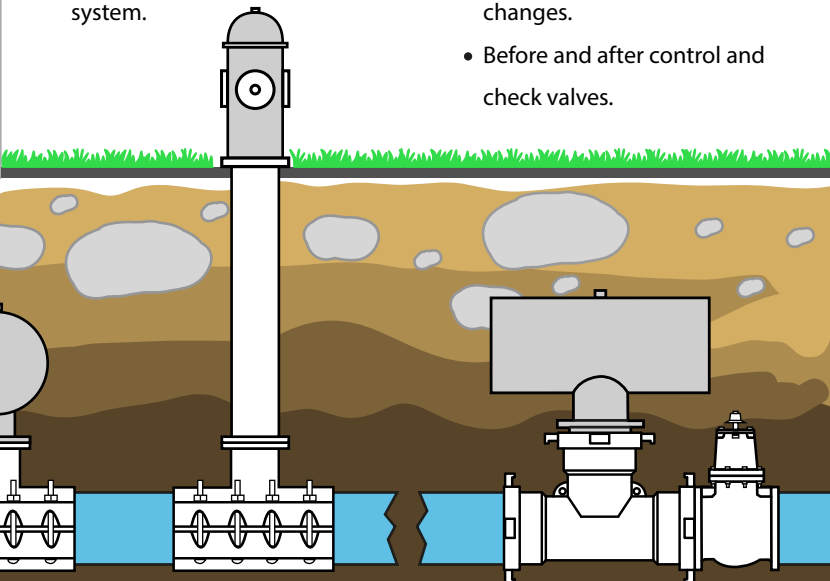
1. Install fitting in/on run of pipeline. Thoroughly clean the flange connections and gasket to be joined, and inspect the area where the flanges will be installed for flaws, i.e., gouges, protrusions, excessive corrosion, etc, irregular surfaces should be avoided to assure maximum gasket sealing. Prior to gasket installation inspect for any nicks, gouges or tears. Lubricate the gaskets with soapy water.
2. Surge suppressor should be installed on the vertical of the pipe. The surge suppressor and mounting fitting should be properly supported.
3. Use a torque wrench to tighten the bolts in a star pattern until the desired torque is reached.
4. The outlet plug should be tightened from 50 – 70 ft. lbs of torque.
5. Confirm watertight application of all components. The pressure test must be done carefully to prevent the damage of the surge suppressor or the mounting fitting.

1-800-800-0932

www.powerseal.com • 940-767-5566 fax: 940-723-8378
701 Pleasant View Drive Wichita Falls, TX 76306

INSTALLATION RECOMENDATIONS

- At the site of latest failure.
- At the end of pipeline.
- At the high and low points of pipeline system.
- At pipe size reduction points.
- Every 900-1100 feet.
- In advance of major directional changes.
- Before and after control and check valves.



3643AS

3643MJ