

# OUTLET AVAILABLE FOR REPAIR CLAMPS

## 3121, 3122, 3121AS, 3122AS

All repair clamps build with 304 stainless steel outlet and shall be passivated so as to return the welded stainless steel to its original corrosion resistant state

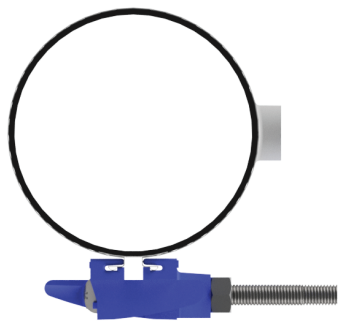
To add-on a Tapped Outlet to a Repair Clamp, change the model number as noted above and specify the Tapped Clamp, Outlet Size and Thread Type. Combine the Clamp and Outlet List Prices for a total price. Example: 3121 6C X 12 Tapped Clamp with a 3/4"CC Outlet. Order 3131-6C X 12 X 3/4CC. Part Number: 313106C120AB

### REPAIR CLAMPS TAPPED OUTLET ADD-ON LIST PRICES

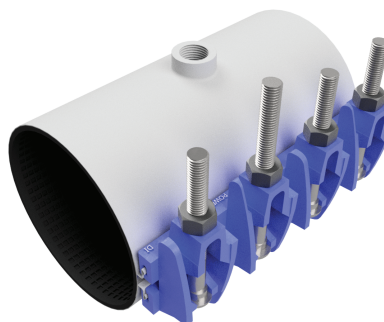
| Outlet Size | Thread Type | Add-On List Price | End Code | Minimum Pipe OD | Minimum Clamp Length |
|-------------|-------------|-------------------|----------|-----------------|----------------------|
| 3/4"        | CC (AWWA)   | \$ 63.50          | B        | 2.38"           | 6"                   |
| 1"          | CC (AWWA)   | \$ 63.50          | D        | 2.38"           | 6"                   |
| 1 1/4"      | CC (AWWA)   | \$ 84.70          | F        | 2.88"           | 8"                   |
| 1 1/2"      | CC (AWWA)   | \$ 84.70          | H        | 3.50"           | 8"                   |
| 2"          | CC (AWWA)   | \$ 104.80         | J        | 4.50"           | 8"                   |
| 3/4"        | IP (NPT)    | \$ 63.50          | C        | 2.38"           | 6"                   |
| 1"          | IP (NPT)    | \$ 63.50          | E        | 2.38"           | 6"                   |
| 1 1/4"      | IP (NPT)    | \$ 84.70          | G        | 2.88"           | 8"                   |
| 1 1/2"      | IP (NPT)    | \$ 84.70          | I        | 3.50"           | 8"                   |
| 2"          | IP (NPT)    | \$ 104.80         | K        | 3.50"           | 8"                   |
| 3"          | IP (NPT)    | \$ 265.20         | O        | 6.63"           | 12"                  |



3121



3131



| Model Number |              |
|--------------|--------------|
| Repair Clamp | Tapped Clamp |
| 3121         | 3131         |
| 3122         | 3132         |
| 3121AS       | 3131AS       |
| 3122AS       | 3132AS       |

### REPAIR CLAMPS ADD-ON LIST PRICES

| Component Description                       | Part Number | Product Size  | List Price | Unit      |
|---|-------------|---------------|------------|-----------|
| Fluoro-coat bolt and nut list add on (5/8") | -8          | All sizes     | \$ 4.20    | Per Bolt  |
| Electrical Conductivity Buttons             | -3          | 8 - 16" Width | \$ 45.60   | Per Clamp |
| Electrical Conductivity Buttons             | -3          | 20 - 36"      | \$ 55.50   | Per Clamp |
| Never Gall bolt and nut list add on (5/8")  | -NG         | All sizes     | \$7.70     | Per bolt  |

How to order: Add part number -3 at end of part number. Example: 312106C120AA-SB3

# 3121 IRON LUG SINGLE PANEL SS BOLTS

**PANEL:** Type 304 (18-8) Stainless Steel per ASTM A240.

**GASKET:** SBR Chek-O-Seal with multi o-ring sealing ribs from 100% new rubber to ensure performance under varying pressures with superior storage characteristics. Suitable for mild acids, water and salt media with a temperature range of -40°F to +200°F per ASTM D2000 . Other materials available.

**ARMOR PLATE:** Type 304 (18-8) Stainless Steel per ASTM A240, recessed and bonded to the gasket.

**BOLTS & NUTS:** Type 304 (18-8) Stainless Steel per ASTM A193 and A194. **NOTE:** Hex nuts are furnished with fusion bonded coating to prevent seizing and/or galling.

**LUGS:** Ductile Iron per ASTM A536.



MEETS  
AWWA  
C230

| Nominal Pipe'-I |     |        | Pipe OD Range |           | Part Number                | Width / List price |          |          |            |            |            |            |
|-----------------|-----|--------|---------------|-----------|----------------------------|--------------------|----------|----------|------------|------------|------------|------------|
| In              | MM  | Letter | Inches        | MM        |                            | 8                  | 10       | 12       | 16         | 20         | 24         | 30         |
| 1 1/4           | 26  | -      | 1.66          | 42        | 3121012 + Width + OBA-SB   | \$233.10           | \$342.90 | \$397.80 | \$476.80   | P.O.A      | P.O.A      | P.O.A      |
| 1 1/2           | 38  | -      | 1.88 - 1.92   | 48 - 49   | 3121015 + Width + OBA-SB   | \$233.10           | \$342.90 | \$397.80 | \$476.80   | P.O.A      | P.O.A      | P.O.A      |
| 2               | 50  | -      | 2.35 - 2.63   | 60 - 67   | 3121020 + Width + OBA-SB   | \$233.10           | \$342.90 | \$397.80 | \$476.80   | P.O.A      | P.O.A      | P.O.A      |
| 2 1/2           | 63  | -      | 2.70 - 3.00   | 69 - 77   | 3121025 + Width + OBA-SB   | \$248.30           | \$287.40 | \$431.50 | \$505.00   | P.O.A      | P.O.A      | P.O.A      |
| 3               | 75  | A      | 2.97 - 3.25   | 75 - 83   | 312103+Letter+Width+OBA-SB | \$271.60           | \$363.40 | \$459.90 | \$545.90   | P.O.A      | P.O.A      | P.O.A      |
|                 |     | B      | 3.46 - 3.70   | 88 - 94   |                            |                    |          |          |            |            |            |            |
|                 |     | C      | 3.73 - 4.00   | 95 - 102  |                            |                    |          |          |            |            |            |            |
|                 |     | D      | 3.96 - 4.25   | 101 - 108 |                            |                    |          |          |            |            |            |            |
| 4               | 100 | A      | 4.45 - 4.73   | 113 - 120 | 312104+Letter+Width+OBA-SB | \$288.70           | \$400.00 | \$395.50 | \$577.70   | \$774.90   | \$972.10   | \$1,169.20 |
|                 |     | B      | 4.74 - 5.14   | 120 - 131 |                            |                    |          |          |            |            |            |            |
|                 |     | C      | 4.95 - 5.35   | 126 - 136 |                            |                    |          |          |            |            |            |            |
|                 |     | D      | 5.22 - 5.62   | 133 - 143 |                            |                    |          |          |            |            |            |            |
| 6               | 150 | A      | 5.95 - 6.35   | 151 - 161 | 312106+Letter+Width+OBA-SB | \$331.00           | \$451.50 | \$492.80 | \$641.30   | \$897.60   | \$1,099.30 | \$1,314.30 |
|                 |     | B      | 6.56 - 6.96   | 167 - 177 |                            |                    |          |          |            |            |            |            |
|                 |     | C      | 6.84 - 7.24   | 174 - 184 |                            |                    |          |          |            |            |            |            |
|                 |     | D      | 7.05 - 7.45   | 179 - 189 |                            |                    |          |          |            |            |            |            |
|                 |     | E      | 7.45 - 7.85   | 189 - 199 |                            |                    |          |          |            |            |            |            |
| 8               | 200 | A      | 7.95 - 8.35   | 202 - 212 | 312108+Letter+Width+OBA-SB | \$379.10           | \$506.20 | \$617.90 | \$745.70   | \$1,011.20 | \$1,217.40 | \$1,437.40 |
|                 |     | B      | 8.54 - 8.94   | 217 - 227 |                            |                    |          |          |            |            |            |            |
|                 |     | C      | 8.99 - 9.39   | 228 - 239 |                            |                    |          |          |            |            |            |            |
|                 |     | D      | 9.27 - 9.67   | 235 - 246 |                            |                    |          |          |            |            |            |            |
| 10              | 250 | A      | 9.70 - 10.10  | 246 - 257 | 312110+Letter+Width+OBA-SB | \$481.50           | \$653.40 | \$761.10 | \$950.50   | \$1,270.40 | \$1,444.90 | \$1,455.90 |
|                 |     | B      | 10.64 - 11.04 | 270 - 280 |                            |                    |          |          |            |            |            |            |
|                 |     | C      | 11.04 - 11.44 | 280 - 291 |                            |                    |          |          |            |            |            |            |
|                 |     | D      | 11.34 - 11.74 | 288 - 298 |                            |                    |          |          |            |            |            |            |
|                 |     | E      | 11.75 - 12.15 | 298 - 309 |                            |                    |          |          |            |            |            |            |
| 12              | 300 | A      | 12.00 - 12.40 | 305 - 315 | 312112+Letter+Width+OBA-SB | \$536.00           | \$717.10 | \$870.20 | \$1,077.90 | \$1,425.00 | \$1,676.80 | \$2,155.70 |
|                 |     | B      | 12.62 - 13.02 | 321 - 331 |                            |                    |          |          |            |            |            |            |
|                 |     | C      | 13.10 - 13.50 | 333 - 343 |                            |                    |          |          |            |            |            |            |
|                 |     | D      | 13.40 - 13.80 | 340 - 351 |                            |                    |          |          |            |            |            |            |
|                 |     | E      | 13.70 - 14.10 | 348 - 358 |                            |                    |          |          |            |            |            |            |
|                 |     | F      | 14.00 - 14.40 | 356 - 366 |                            |                    |          |          |            |            |            |            |