

OUTLET AVAILABLE FOR REPAIR CLAMPS

3121, 3122, 3121AS, 3122AS

All repair clamps build with 304 stainless steel outlet and shall be passivated so as to return the welded stainless steel to its original corrosion resistant state

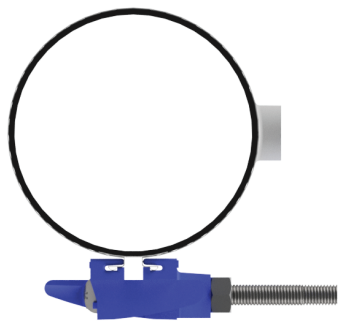
To add-on a Tapped Outlet to a Repair Clamp, change the model number as noted above and specify the Tapped Clamp, Outlet Size and Thread Type. Combine the Clamp and Outlet List Prices for a total price. Example: 3121 6C X 12 Tapped Clamp with a 3/4"CC Outlet. Order 3131-6C X 12 X 3/4CC. Part Number: 313106C120AB

REPAIR CLAMPS TAPPED OUTLET ADD-ON LIST PRICES

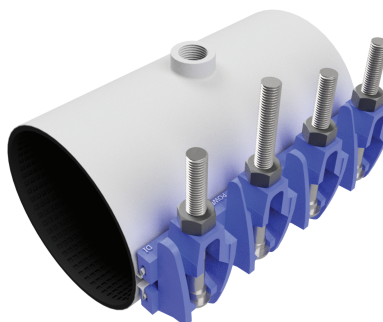
Outlet Size	Thread Type	Add-On List Price	End Code	Minimum Pipe OD	Minimum Clamp Length
3/4"	CC (AWWA)	\$ 63.50	B	2.38"	6"
1"	CC (AWWA)	\$ 63.50	D	2.38"	6"
1 1/4"	CC (AWWA)	\$ 84.70	F	2.88"	8"
1 1/2"	CC (AWWA)	\$ 84.70	H	3.50"	8"
2"	CC (AWWA)	\$ 104.80	J	4.50"	8"
3/4"	IP (NPT)	\$ 63.50	C	2.38"	6"
1"	IP (NPT)	\$ 63.50	E	2.38"	6"
1 1/4"	IP (NPT)	\$ 84.70	G	2.88"	8"
1 1/2"	IP (NPT)	\$ 84.70	I	3.50"	8"
2"	IP (NPT)	\$ 104.80	K	3.50"	8"
3"	IP (NPT)	\$ 265.20	O	6.63"	12"



3121



3131



Model Number	
Repair Clamp	Tapped Clamp
3121	3131
3122	3132
3121AS	3131AS
3122AS	3132AS

REPAIR CLAMPS ADD-ON LIST PRICES

Component Description	Part Number	Product Size	List Price	Unit
Fluoro-coat bolt and nut list add on (5/8")	-8	All sizes	\$ 4.20	Per Bolt
Electrical Conductivity Buttons	-3	8 - 16" Width	\$ 45.60	Per Clamp
Electrical Conductivity Buttons	-3	20 - 36"	\$ 55.50	Per Clamp
Never Gall bolt and nut list add on (5/8")	-NG	All sizes	\$7.70	Per bolt

How to order: Add part number -3 at end of part number. Example: 312106C120AA-SB3

IRON LUG DOUBLE PANEL 3122



PANEL: Type 304 (18-8) Stainless Steel per ASTM A240.
GASKET: SBR Chek-O-Seal with multi o-ring sealing ribs from 100% new rubber to ensure performance under varying pressures with superior storage characteristics. Suitable for mild acids, water and salt media with a temperature range of -40°F to +200°F, per ASTM D2000 . Other materials available.
ARMOR PLATE: Type 304 (18-8) Stainless Steel per ASTM A240, recessed and bonded to the gasket.
BOLTS & NUTS: Low Alloy Steel per ASTM A325, ASTM A563, and AWWA C111.
LUGS: Ductile Iron per ASTM A536.



**MEETS
AWWA
C230**



Nominal Pipe Size			Pipe OD Range		Part Number	Width / List price						
Inches	MM	Letter	Inches	MM		8	10	12	16	20	24	30
3	75	-	3.49 - 4.29	89 - 109	312203+Width+0AA-LB	\$326.20	\$431.10	\$509.00	\$648.60	\$968.50	P.O.A	P.O.A
4	100	A	4.44 - 5.24	113 - 133	312204+Letter+Width+0AA-LB	\$326.20	\$431.10	\$509.00	\$648.60	\$968.50	P.O.A	P.O.A
		B	4.74 - 5.57	120 - 141								
6	150	A	6.62 - 7.42	168 - 188	312206+Letter+Width+0AA-LB	\$378.40	\$486.50	\$567.70	\$756.80	\$1,009.10	\$1,259.20	\$1,546.80
		B	6.84 - 7.64	174 - 194								
8	200	A	8.62 - 9.42	219 - 239	312208+Letter+Width+0AA-LB	\$427.90	\$540.60	\$630.70	\$860.40	\$1,421.30	\$1,421.30	\$1,725.30
		B	8.99 - 9.79	228 - 249								
10	250	A	10.75 - 11.55	273 - 293	312210+Letter+Width+0AA-LB	\$448.90	\$720.70	\$997.30	\$1,085.60	\$1,441.50	\$1,802.00	\$2,162.30
		B	11.10 - 11.90	282 - 302								
		D	11.60 - 12.40	295 - 315								
12	300	A	12.75 - 13.55	324 - 344	312212+Letter+Width+0AA-LB	\$575.30	\$801.80	\$1,132.20	\$1,189.20	\$1,590.20	\$1,984.50	\$2,378.50
		B	13.20 - 14.00	335 - 356								
		D	13.65 - 14.45	347 - 367								
14	350	A	14.38 - 15.13	365 - 384	312214+Letter+Width+0AA-LB	\$841.30	\$1,342.50	\$1,438.90	\$1,932.50	\$2,369.80	\$3,284.10	\$3,955.20
		B	15.07 - 15.82	383 - 402								
16	400	A	15.92 - 16.67	404 - 423	312216+Letter+Width+0AA-LB	POA	\$1,849.80	\$1,849.80	\$2,176.20	\$2,950.40	\$3,686.80	\$4,425.60
		B	16.56 - 17.31	421 - 440								
		C	17.15 - 17.90	436 - 455								
18	450	A	17.82 - 18.57	453 - 472	312218+Letter+Width+0AA-LB	POA	\$1,890.00	\$1,890.00	\$2,223.40	\$3,002.40	\$3,774.40	\$4,550.80
		B	18.46 - 19.21	469 - 488								
		C	19.23 - 19.98	488 - 507								
20	500	A	19.90 - 20.65	505 - 525	312220+Letter+Width+0AA-LB	POA	\$2,029.80	\$2,029.80	\$2,388.60	\$3,238.40	\$4,067.80	\$4,900.00
		B	20.70 - 21.45	526 - 545								
22	550	A	21.52 - 22.27	547 - 566	312222+Letter+Width+0AA-LB	POA	\$3,411.20	\$3,411.20	\$4,013.20	\$5,210.40	\$6,719.20	\$8,231.60
		B	22.12 - 22.87	562 - 581								
		C	22.90 - 23.65	582 - 601								

HOW TO ORDER: Specify Model Number, Pipe Size with Letter Code, and Width. **EXAMPLE:** 12" Cast Iron O.D. 13.20 with 16" Clamp Width. Order 3122 - 12B X 16. **Part Number:** 312106 + Letter + Width + 0AA-LB = 312112B160AA-LB.