

# SEWER SADDLE

**BODY CASTING:** Ductile Iron per ASTM A536.

**ADJUSTABLE STRAP:** 3 1/2" wide, type 304 (18-8) Stainless Steel per ASTM A240.

**STUD BOLTS:** 1/2" UNC threads. Type 304 (18-8) Stainless Steel per ASTM A193.

**NUTS:** Type 304 (18-8) Stainless Steel per ASTM A194. **NOTE:** Hex nuts are furnished with fusion bonded coating to prevent seizing and/or galling.

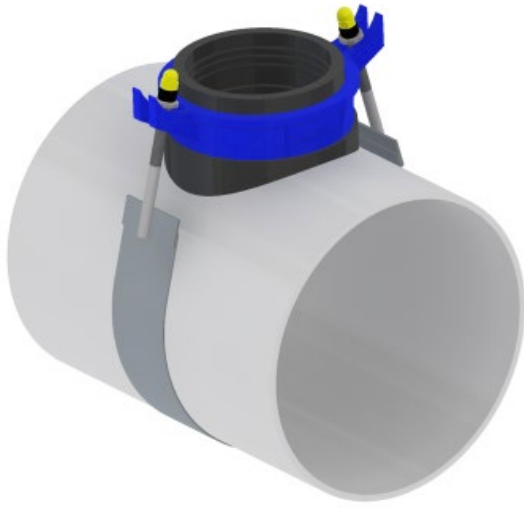
**WASHERS:** Type 304 Stainless steel per ASTM A 240.

**GASKET:** SBR per ASTM D2000 with a large profile, which allows for a greater range of use and allows for earth movement, and built in pipe stop to prevent line stoppage due to pipe insertion into main.

**FINISH:** Epoxy.



Nominal Branch Size	Nominal Pipe Size	Pipe OD Range	Branch Type	Branch O.D	Part Number	List Price	Weight (lbs)
4"	6"-12" 48" Strap	6.27-14.40 Regular Gasket	PVC Sewer	4.215	EL-4.215	\$218.20	10
			Tyseal	4.28	EL-4.28		
			C.I. soil-No-Hub	4.38	EL-4.38		
			PVC	4.50	EL-4.50		
			Universal	4.20-4.80	EL-4.80UN *		
			Clay	5.00-5.38	EL-5.38 *		
	14"-24" 96" Strap	14.40-25.80 Large O.D Gasket	PVC Sewer	4.215	EL-4.215LS	\$277.47	11
			Tyseal	4.28	EL-4.28LS		
			C.I. soil-No-Hub	4.38	EL-4.38LS		
			PVC	4.50	EL-4.50LS		
			Universal	4.20-4.80	EL-4.80UNLS *		
			Clay	5.00-5.38	EL-5.38LS *		
	24"-48" 192" Strap	25.80-54.00 Large O.D Gasket	PVC Sewer	4.215	EL-4.215XLS	\$514.98	13
			Tyseal	4.28	EL-4.28XLS		
			C.I. soil-No-Hub	4.38	EL-4.38XLS		
			PVC	4.50	EL-4.50XLS		
			Universal	4.20-4.80	EL-4.80UNXLS		
			Clay	5.00-5.38	EL-5.38XLS *		
6"	8"-12" 48" Strap	8.00-14.40 Regular Gasket	PVC Sewer C.I Soil-No Hub	6.27-6.30	EL-6.30	\$290.88	12
			Universal	6.27-6.66	EL-6.66UN *		
			Cast Iron- D.I.	6.90	EL-6.90		
			Clay	7.19-8.00	EL-8.00 *		
	14"-24" 96" Strap	14.40-25.80 Large O.D Gasket	PVC Sewer C.I Soil-No Hub	6.27-6.30	EL-6.30LS	\$347.34	13
			Universal	6.27-6.66	EL-6.66UNLS *		
			Cast Iron- D.I.	6.90	EL-6.90LS		
			Clay	7.19-8.00	EL-8.00LS *		
	24"-48" 192" Strap	25.80-54.00 Large O.D Gasket	PVC Sewer C.I Soil-No Hub	6.27-6.30	EL-6.30XLS	\$584.86	15
			Universal	6.27-6.66	EL-6.66UNXLS *		
			Cast Iron- D.I.	6.90	EL-6.90XLS		
			Clay	7.19-8.00	EL-8.00XLS *		



**REPAIR COMPONENTS**

Branch Size	Size	List Price				Strap	
		Gasket	Saddle Casting	Sliding Bolt	Hose Clamp		
4"	6-12"	\$71.13	\$76.51	\$26.01	\$21.15	REG (48") \$44.50	
	14-24"	\$97.02					
	24-48"W	\$97.02				LS (96") \$65.50	
6"	8-12"	\$125.26	\$95.05	\$26.01	\$22.51		XLS (192") \$215.30
	14-24"	\$148.35					
	24-48"	\$148.35					

**How to order:** Specify catalog number. Example: To fit 4" branch to 6"-12" nominal pipe with branch 4.50", order EL-4.50LS

\* EL Sewer -saddle for Universal and Clay pipe include stainless steel hose clamp

\*\* Standard gaskets are NOT interchangeable with large gaskets.