



PowerSeal

PIPELINE PRODUCTS CORPORATION



Sleeves
January 2015

3425 POWERSTOP SADDLE

(FOR COPPER, STEEL AND PVC PIPE)

PANEL & LIFTER BAR: Type 304 (18-8) Stainless Steel per ASTM A240.

GASKET: 3/16" thick gridded NBR per ASTM D2000 from 100% new rubber to ensure performance under varying pressures with superior storage characteristics. Suitable for mild acids, water and salt media with a temperature range of -25° to +248° F.

ARMOR PLATE: Type 304 (18-8) Stainless Steel per ASTM A240.

BOLTS & NUTS: Type 304 (18-8) Stainless Steel per ASTM A193 & A194. **NOTE:** Hex nuts are furnished with fusion bonded coating to prevent seizing and galling.

LUGS: Type 304 (18-8) Stainless Steel per ASTM A240.

WASHERS: Delrin per ASTM D6778.

OUTLET: Type 304 (18-8) Stainless Steel per ASTM A312.



Nominal Pipe Size		Letter Code	Pipe OD Range		Outlet Size MIP		Part Number	List Price
Inches	MM		Inches	MM	Inches	MM		
3/4	20		Copper Tubing OD					
		A	0.88	22	3/4	20	3425007A0000	\$ 298.20
			Steel Pipe OD		Outlet Size			
		B	1.05	26	3/4	20	3425007B0000	\$ 298.20
1	25		Copper Tubing OD					
		A	1.13	29	3/4	20	3425010A0000	\$ 304.30
		B			1	25	3425010B0000	\$ 328.70
			Steel Pipe OD		Outlet Size			
		C	1.32	34	3/4	20	3425010C0000	\$ 304.30
		D			1	25	3425010D0000	\$ 328.70
1 1/4	32		Copper Tubing OD					
		A	1.38	35	3/4	20	3425012A0000	\$ 310.40
		B			1	25	3425012B0000	\$ 333.40
		C			1 1/4	32	3425012C0000	\$ 368.60
			Steel Pipe OD		Outlet Size			
		AS			3/4	20	3425012A000S	\$ 310.40
		D	1.66	42	1	25	3425012D0000	\$ 333.40
		E			1 1/4	32	3425012E0000	\$ 368.60
	Copper Tubing OD		Outlet Size					
1 1/2	40	A	1.63	41	3/4	20	3425015A0000	\$ 316.60
		B			1	25	3425015B0000	\$ 395.90
		H			1 1/4	32	3425015H0000	\$ 411.50
		C			1 1/2	40	3425015C0000	\$ 419.10
			Steel Pipe OD		Outlet Size			
		AS			3/4	20	3425015A000S	\$ 316.60
		D	1.90	48	1	25	3425015D0000	\$ 395.90
		E			1 1/4	32	3425015E0000	\$ 411.50
		F			1 1/2	40	3425015F0000	\$ 419.10

3425 POWERSTOP SADDLE

Nominal Pipe Size		Letter Code	Pipe OD Range		Outlet Size MIP		Part Number	List Price		
Inches	MM		Inches	MM	Inches	MM				
2	50	Copper Tubing OD		Outlet Size						
		A	2.13	54	3/4	20	3425020A0000	\$ 327.30		
		B			1	25	3425020B0000	\$ 403.80		
		H			1 1/4	32	3425020H0000	\$ 415.80		
		C			1 1/2	40	3425020C0000	\$ 435.70		
		D			2	50	3425020D0000	\$ 464.30		
		Steel Pipe OD		Outlet Size						
		AS	2.38	60	3/4	20	3425020A0000S	\$ 327.30		
		E			1	25	3425020E0000	\$ 403.80		
		I			1 1/4	32	3425020I0000	\$ 415.80		
		F			1 1/2	40	3425020F0000	\$ 435.70		
		G			2	50	3425020G0000	\$ 464.30		
		2 1/2	65	Copper Tubing OD		Outlet Size				
				A	2.63	67	3/4	20	3425025A0000	\$ 333.80
B	1			25			3425025B0000	\$ 411.70		
K	1 1/4			32			3425025K0000	\$ 427.90		
J	1 1/2			40			3425025J0000	\$ 444.00		
C	2			40			3425025C0000	\$ 546.30		
D	2 1/2			50	3425025D0000	\$ 637.30				
Steel Pipe OD				Outlet Size						
AS	2.88			73	3/4	20	3425025A0000S	\$ 333.80		
E					1	25	3425025E0000	\$ 411.70		
I					1 1/4	32	3425025I0000	\$ 427.90		
F					1 1/2	40	3425025F0000	\$ 444.00		
G					2	50	3425025G0000	\$ 546.30		
H	2 1/2			65	3425025H0000	\$ 637.30				
3	80	Copper Tubing OD		Outlet Size						
		A	3.13	80	3/4	20	3425030A0000	\$ 340.50		
		B			1	25	3425030B0000	\$ 420.10		
		J			1 1/4	32	3425030J0000	\$ 436.50		
		C			1 1/2	40	3425030C0000	\$ 452.90		
		D			2	50	3425030D0000	\$ 557.20		
		L	2 1/2	65	3425030L0000	\$ 650.30				
		E	3	80	3425030E0000-12	\$ 675.50				
		Steel Pipe OD		Outlet Size						
		AS	3.50	80	3/4	20	3425030A0000S	\$ 340.50		
		F			1	25	3425030F0000	\$ 420.10		
		M			1 1/4	32	3425030M0000	\$ 436.50		
		G			1 1/2	40	3425030G0000	\$ 452.90		
		H			2	50	3425030H0000	\$ 557.20		
K	2 1/2	65	3425030K0000	\$ 650.30						
I	3	80	3425030I0000-12	\$ 675.50						

3425 POWERSTOP SADDLE

Nominal Pipe Size		Letter Code	Pipe OD Range		Outlet Size MIP		Part Number	List Price
Inches	MM		Inches	MM	Inches	MM		
			Copper Tubing OD		Outlet Size			
4	100	A	4.13	105	3/4	20	3425040A0000	\$ 347.30
		B			1	25	3425040B0000	\$ 428.70
		L			1 1/4	32	3425040L0000	\$ 445.40
		C			1 1/2	40	3425040C0000	\$ 462.00
		D			2	50	3425040D0000	\$ 568.60
		M			2 1/2	65	3425040M0000	\$ 663.60
		E			3	80	3425040E0000-12	\$ 689.20
		F			4	100	3425040F0000-12	\$ 703.00
			Steel Pipe OD		Outlet Size			
4	100	AS	4.50	105	3/4	20	3425040A000S	\$ 347.30
		G			1	25	3425040G0000	\$ 428.70
		N			1 1/4	32	3425040N0000	\$ 445.40
		H			1 1/2	40	3425040H0000	\$ 462.00
		I			2	50	3425040I0000	\$ 568.60
		Q			2 1/2	65	3425040Q0000	\$ 663.60
		J			3	80	3425040J0000-12	\$ 689.20
		K			4	100	3425040K0000-12	\$ 703.00
			Copper Tubing OD		Outlet Size			
5	125	AS	5.13	130	3/4	20	3425050A000S	\$ 354.20
		A			1	25	3425050A0000	\$ 437.40
		N			1 1/4	32	3425050N0000	\$ 454.30
		B			1 1/2	40	3425050B0000	\$ 471.20
		C			2	50	3425050C0000	\$ 579.70
		E			2 1/2	65	3425050E0000	\$ 677.10
		D			3	80	3425050D0000-12	\$ 703.30
					Copper Tubing OD		Outlet Size	
6	150	AS	6.13	156	3/4	20	3425060A000S	\$ 361.40
		A			1	25	3425060A0000	\$ 446.30
		H			1 1/4	32	3425060H0000	\$ 463.60
		B			1 1/2	40	3425060B0000	\$ 480.80
		C			2	50	3425060C0000	\$ 591.50
		L			2 1/2	65	3425060L0000	\$ 690.90
		D			3	80	3425060D0000-12	\$ 717.70

CUSTOM SIZES AVAILABLE.

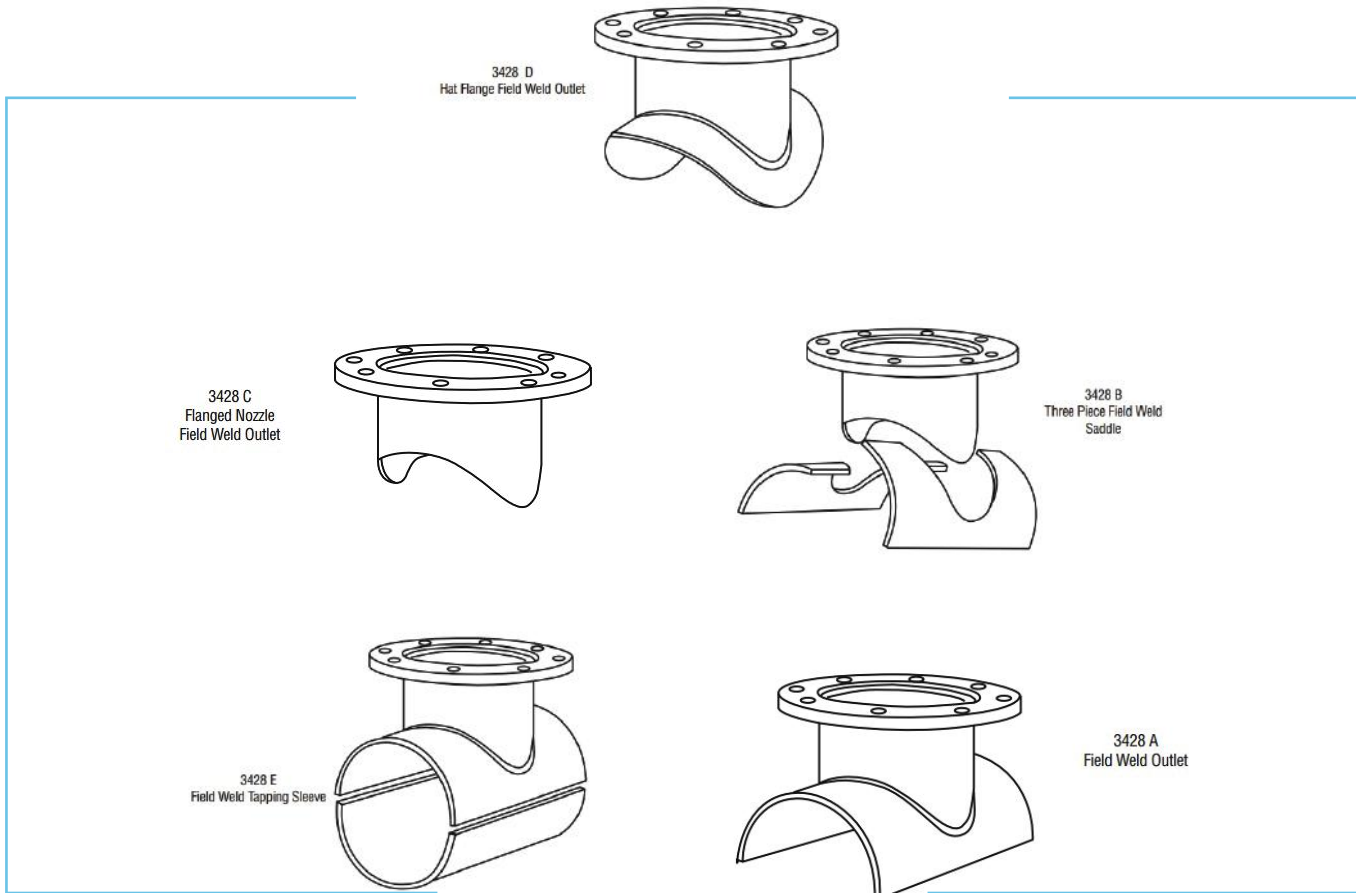
The Model 3425 is used for tapping water, sewage, and air systems. The PowerStop Saddle offers a wide range of tapping outlets including size-on-size for copper, steel, and PVC pipelines. Male NPT outlets are available in all standard pipe sizes and the entire fitting is fabricated from stainless steel. The patented complete circle gasket provides a safe and reliable seal while insulating the saddle from galvanic corrosion.

HOW TO ORDER: Specify Model Number, Pipe Size with Letter Code. EXAMPLE: 2" Copper Tubing O.D. 2.13 with 1" MIPT. Order 3425 - 2B. **Part Number:** 3425020B0000 .

3428 POWERSEAL TAP CONNECTIONS (FIELD WELD)

Weld-on outlets are reliable, fast and affordable with PS Field Weld connections.

Complete sleeves, partial sleeves, and outlets are available for steel pipe sizes 6" and above with size on size and reducing outlets. Other configurations of this design are available.



3431 STAINLESS STEEL TAPPING SLEEVE (FOR REINFORCED CONCRETE PIPE)

BODY AND OUTLET: Type 304 Stainless Steel per ASTM A240

FLANGE: Type 304 Stainless Steel per ASTM A240, ANSI Class 150 is standard, machined to be compatible with MSS-SSP 60

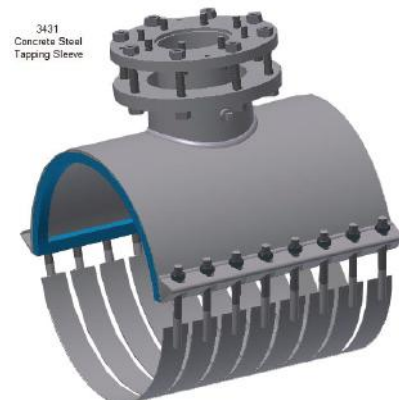
STRAPS: Type 304 Stainless Steel per ASTM A240, and Type 304 Stainless Steel Studs per ASTM A194

NUTS: Type 304 Stainless Steel per ASTM A194

OUTLETGASKET: SBR produced from 100% new rubber per ASTM D2000. Suitable for water and sewer applications with a temperature range of -40° to +150° F.

GROUT PIPES: Type 304 Stainless Steel per ASTM A312

GROUT SEAL: One inch square high density foam.



3460 FABRICATED CARBON STEEL TAP SLEEVE

FLANGE: Carbon Steel per ASTM A36 and AWWA C207.

PANEL: Carbon Steel per ASTM A36.

BRANCH GASKET: NBR per ASTM D2000.

BOLTS & NUTS: Low Alloy Steel per ASTM A325, ASTM A563, and AWWA C111. Or Type 304 (18-8) Stainless Steel per ASTM A193 and A194.

FINISH: Epoxy per AWWA C210.



Nominal Pipe Size		Letter Code	Pipe OD Range		BY	Branch Size		Bolts & Nuts: Low Alloy Steel		Bolts & Nuts: Stainless Steel		Weight	
Inches	MM		Inches	MM		Inches	MM	Part Number	List Price	Part Number	List Price	Lbs	Kgs
4	100	A	4.50	114	X	4	100	346004A040EO	\$ 660.10	346004A040ES	\$ 719.90	65	29
		B	4.80	122				346004B040EO		346004B040ES			
6	150	A	6.56-6.69	167-170	X	4	100	346006A040EO	\$ 604.20	346006A040ES	\$ 658.90	70	32
		B	6.83-7.16	173-182				346006B040EO		346006B040ES			
		C	7.05-7.40	179-188				346006C040EO		346006C040ES			
		D	7.40-7.73	188-196				346006D040EO		346006D040ES			
6	150	A	6.56-6.69	167-170	X	6	150	346006A060EO	\$ 708.30	346006A060ES	\$ 772.80	75	34
		B	6.83-7.16	173-182				346006B060EO		346006B060ES			
		C	7.05-7.40	179-188				346006C060EO		346006C060ES			
		D	7.40-7.73	188-196				346006D060EO		346006D060ES			
8	200	A	7.80-8.16	198-207	X	4	100	346008A040EO	\$ 657.50	346008A040ES	\$ 717.10	80	36
		B	8.53-8.72	217-221				346008B040EO		346008B040ES			
		C	8.98-9.37	228-238				346008C040EO		346008C040ES			
		D	9.27-9.69	235-246				346008D040EO		346008D040ES			
8	200	A	7.80-8.16	198-207	X	6	150	346008A060EO	\$ 718.50	346008A060ES	\$ 783.60	90	41
		B	8.53-8.72	217-221				346008B060EO		346008B060ES			
		C	8.98-9.37	228-238				346008C060EO		346008C060ES			
		D	9.27-9.69	235-246				346008D060EO		346008D060ES			
8	200	A	7.80-8.16	198-207	X	8	200	346008A080EO	\$ 901.20	346008A080ES	\$ 982.90	115	52
		B	8.53-8.72	217-221				346008B080EO		346008B080ES			
		C	8.98-9.37	228-238				346008C080EO		346008C080ES			
		D	9.27-9.69	235-246				346008D080EO		346008D080ES			
10	250	A	9.83-10.25	250-260	X	4	100	346010A040EO	\$ 662.60	346010A040ES	\$ 722.60	80	36
		B	10.64-10.86	270-276				346010B040EO		346010B040ES			
		C	11.03-11.47	280-291				346010C040EO		346010C040ES			
		D	11.36-11.80	289-300				346010D040EO		346010D040ES			
		E	11.76-12.24	299-311				346010E040EO		346010E040ES			
10	250	A	9.83-10.25	250-260	X	6	150	346010A060EO	\$ 738.80	346010A060ES	\$ 805.70	95	43
		B	10.64-10.86	270-276				346010B060EO		346010B060ES			
		C	11.03-11.47	280-291				346010C060EO		346010C060ES			
		D	11.36-11.80	289-300				346010D060EO		346010D060ES			
		E	11.76-12.24	299-311				346010E060EO		346010E060ES			

3460 FABRICATED CARBON STEEL TAP SLEEVE

Nominal Pipe Size		Letter Code	Pipe OD Range		BY	Branch Size Size		Bolts & Nuts: Low Alloy Steel		Bolts & Nuts: Stainless Steel		Weight	
Inches	MM		Inches	MM		Inches	MM	Part Number	List Price	Part Number	List Price	Lbs	Kgs
10	250	A	9.83-10.25	250-260	X	8	200	346010A080EO	\$ 964.70	346010A080ES	\$ 1,021.60	125	57
		B	10.64-10.86	270-276				346010B080EO		346010B080ES			
		C	11.03-11.47	280-291				346010C080EO		346010C080ES			
		D	11.36-11.80	289-300				346010D080EO		346010D080ES			
		E	11.76-12.24	299-311				346010E080EO		346010E080ES			
10	250	B	10.64-10.86	270-276	X	10	250	346010B100EO	\$ 1,221.10	346010B100ES	\$ 1,331.70	140	64
		C	11.03-11.47	280-291				346010C100EO		346010C100ES			
		D	11.36-11.80	289-300				346010D100EO		346010D100ES			
		E	11.76-12.24	299-311				346010E100EO		346010E100ES			
12	300	A	12.62-12.88	321-327	X	4	100	346012A040EO	\$ 715.90	346012A040ES	\$ 780.80	95	43
		B	13.13-13.60	334-345				346012B040EO		346012B040ES			
		C	13.60-14.09	345-358				346012C040EO		346012C040ES			
		D	14.09-14.56	358-370				346012D040EO		346012D040ES			
12	300	A	12.62-12.88	321-327	X	6	150	346012A060EO	\$ 781.90	346012A060ES	\$ 852.80	105	48
		B	13.13-13.60	334-345				346012B060EO		346012B060ES			
		C	13.60-14.09	345-358				346012C060EO		346012C060ES			
		D	14.09-14.56	358-370				346012D060EO		346012D060ES			
12	300	A	12.62-12.88	321-327	X	8	200	346012A080EO	\$ 995.20	346012A080ES	\$ 1,085.30	135	61
		B	13.13-13.60	334-345				346012B080EO		346012B080ES			
		C	13.60-14.09	345-358				346012C080EO		346012C080ES			
		D	14.09-14.56	358-370				346012D080EO		346012D080ES			
12	300	A	12.62-12.88	321-327	X	10	250	346012A100EO	\$ 1,370.90	346012A100ES	\$ 1,495.10	170	77
		B	13.13-13.60	334-345				346012B100EO		346012B100ES			
		C	13.60-14.09	345-358				346012C100EO		346012C100ES			
		D	14.09-14.56	358-370				346012D100EO		346012D100ES			
12	300	A	12.62-12.88	321-327	X	12	300	346012A120EO	\$ 1,510.50	346012A120ES	\$ 1,647.30	200	91
		B	13.13-13.60	334-345				346012B120EO		346012B120ES			
		C	13.60-14.09	345-358				346012C120EO		346012C120ES			
		D	14.09-14.56	358-370				346012D120EO		346012D120ES			
14	350	A	14.59-15.08	371-383	X	4	100	346014A040EO	\$ 748.90	346014A040ES	\$ 816.80	110	50
		B	15.23-15.80	387-401				346014B040EO		346014B040ES			
		C	15.73-16.22	400-412				346014C040EO		346014C040ES			
		D	16.30-16.73	414-425				346014D040EO		346014D040ES			
14	350	A	14.59-15.08	371-383	X	6	150	346014A060EO	\$ 835.30	346014A060ES	\$ 910.90	115	52
		B	15.23-15.80	387-401				346014B060EO		346014B060ES			
		C	15.73-16.22	400-412				346014C060EO		346014C060ES			
		D	16.30-16.73	414-425				346014D060EO		346014D060ES			
14	350	A	14.59-15.08	371-383	X	8	200	346014A080EO	\$ 1,056.10	346014A080ES	\$ 1,151.80	145	66
		B	15.23-15.80	387-401				346014B080EO		346014B080ES			
		C	15.73-16.22	400-412				346014C080EO		346014C080ES			
		D	16.30-16.73	414-425				346014D080EO		346014D080ES			

3460 FABRICATED CARBON STEEL TAP SLEEVE

Nominal Pipe Size		Letter Code	Pipe OD Range		BY	Branch Size Size		Bolts & Nuts: Low Alloy Steel		Bolts & Nuts: Stainless Steel		Weight	
Inches	MM		Inches	MM		Inches	MM	Part Number	List Price	Part Number	List Price	Lbs	Kgs
14	350	A	14.59-15.08	371-383	X	10	250	346014A100EO	\$ 1,434.30	346014A100ES	\$ 1,564.20	205	93
		B	15.23-15.80	387-401				346014B100EO		346014B100ES			
		C	15.73-16.22	400-412				346014C100EO		346014C100ES			
		D	16.30-16.73	414-425				346014D100EO		346014D100ES			
14	350	A	14.59-15.08	371-383	X	12	300	346014A120EO	\$ 1,566.50	346014A120ES	\$ 1,719.30	230	104
		B	15.23-15.80	387-401				346014B120EO		346014B120ES			
		C	15.73-16.22	400-412				346014C120EO		346014C120ES			
		D	16.30-16.73	414-425				346014D120EO		346014D120ES			
16	400	A	16.74-17.26	425-438	X	4	100	346016A040EO	\$ 794.50	346016A040ES	\$ 866.50	115	52
		B	17.33-17.87	440-454				346016B040EO		346016B040ES			
		C	17.88-18.43	473-487				346016C040EO		346016C040ES			
		D	18.62-19.19	454-468				346016D040EO		346016D040ES			
16	400	A	16.74-17.26	425-438	X	6	150	346016A060EO	\$ 890.20	346016A060ES	\$ 970.90	125	57
		B	17.33-17.87	440-454				346016B060EO		346016B060ES			
		C	17.88-18.43	473-487				346016C060EO		346016C060ES			
		D	18.62-19.19	454-468				346016D060EO		346016D060ES			
16	400	A	16.74-17.26	425-438	X	8	200	346016A080EO	\$ 1,097.30	346016A080ES	\$ 1,196.70	160	73
		B	17.33-17.87	440-454				346016B080EO		346016B080ES			
		C	17.88-18.43	473-487				346016C080EO		346016C080ES			
		D	18.62-19.19	454-468				346016D080EO		346016D080ES			
16	400	A	16.74-17.26	425-438	X	10	250	346016A100EO	\$ 1,501.00	346016A100ES	\$ 1,637.00	215	98
		B	17.33-17.87	440-454				346016B100EO		346016B100ES			
		C	17.88-18.43	473-487				346016C100EO		346016C100ES			
		D	18.62-19.19	454-468				346016D100EO		346016D100ES			
16	400	A	16.74-17.26	425-438	X	12	300	346016A120EO	\$ 1,721.00	346016A120ES	\$ 1,876.90	245	111
		B	17.33-17.87	440-454				346016B120EO		346016B120ES			
		C	17.88-18.43	473-487				346016C120EO		346016C120ES			
		D	18.62-19.19	454-468				346016D120EO		346016D120ES			
18	450	A	18.87-19.45	479-494	X	4	100	346018A040EO	\$ 794.50	346018A040ES	\$ 866.50	122	55
		B	19.41-20.01	493-508				346018B040EO		346018B040ES			
		C	20.00-20.60	508-523				346018C040EO		346018C040ES			
		D	20.29-20.94	515-532				346018D040EO		346018D040ES			
		E	20.93-21.57	532-548				346018E040EO		346018E040ES			
18	450	A	18.87-19.45	479-494	X	6	150	346018A060EO	\$ 890.30	346018A060ES	\$ 970.90	285	59
		B	19.41-20.01	493-508				346018B060EO		346018B060ES			
		C	20.00-20.60	508-523				346018C060EO		346018C060ES			
		D	20.29-20.94	515-532				346018D060EO		346018D060ES			
		E	20.93-21.57	532-548				346018E060EO		346018E060ES			
18	450	A	18.87-19.45	479-494	X	8	200	346018A080EO	\$ 1,097.30	346018A080ES	\$ 1,196.70	130	82
		B	19.41-20.01	493-508				346018B080EO		346018B080ES			
		C	20.00-20.60	508-523				346018C080EO		346018C080ES			
		D	20.29-20.94	515-532				346018D080EO		346018D080ES			
		E	20.93-21.57	532-548				346018E080EO		346018E080ES			

3460 FABRICATED CARBON STEEL TAP SLEEVE

Nominal Pipe Size		Letter Code	Pipe OD Range		BY	Branch Size Size		Bolts & Nuts: Low Alloy Steel		Bolts & Nuts: Stainless Steel		Weight	
Inches	MM		Inches	MM		Inches	MM	Part Number	List Price	Part Number	List Price	Lbs	Kgs
18	450	A	18.87-19.45	479-494	X	10	250	346018A100EO	\$ 1,501.00	346018A100ES	\$ 1,640.00	180	107
		B	19.41-20.01	493-508				346018B100EO		346018B100ES			
		C	20.00-20.60	508-523				346018C100EO		346018C100ES			
		D	20.29-20.94	515-532				346018D100EO		346018D100ES			
		E	20.93-21.57	532-548				346018E100EO		346018E100ES			
18	400	A	18.87-19.45	479-494	X	12	300	346018A120EO	\$ 1,721.00	346018A120ES	\$ 1,876.90	235	129
		B	19.41-20.01	493-508				346018B120EO		346018B120ES			
		C	20.00-20.60	508-523				346018C120EO		346018C120ES			
		D	20.29-20.94	515-532				346018D120EO		346018D120ES			
		E	20.93-21.57	532-548				346018E120EO		346018E120ES			
20	500	A	21.51-22.15	546-563	X	4	100	346020A040EO	\$ 905.80	346020A040ES	\$ 997.80	130	59
		B	22.16-22.81	563-579				346020B040EO		346020B040ES			
		C	22.78-23.45	579-596				346020C040EO		346020C040ES			
		D	23.46-24.16	596-614				346020D040EO		346020D040ES			
		E	24.15-24.85	613-631				346020E040EO		346020E040ES			
		F	24.82-25.52	630-648				346020F040EO		346020F040ES			
20	500	A	21.51-22.15	546-563	X	6	150	346020A060EO	\$ 1,030.00	346020A060ES	\$ 1,123.30	145	66
		B	22.16-22.81	563-579				346020B060EO		346020B060ES			
		C	22.78-23.45	579-596				346020C060EO		346020C060ES			
		D	23.46-24.16	596-614				346020D060EO		346020D060ES			
		E	24.15-24.85	613-631				346020E060EO		346020E060ES			
		F	24.82-25.52	630-648				346020F060EO		346020F060ES			
20	500	A	21.51-22.15	546-563	X	8	200	346020A080EO	\$ 1,322.40	346020A080ES	\$ 1,442.20	200	91
		B	22.16-22.81	563-579				346020B080EO		346020B080ES			
		C	22.78-23.45	579-596				346020C080EO		346020C080ES			
		D	23.46-24.16	596-614				346020D080EO		346020D080ES			
		E	24.15-24.85	613-631				346020E080EO		346020E080ES			
		F	24.82-25.52	630-648				346020F080EO		346020F080ES			
20	500	A	21.51-22.15	546-563	X	10	250	346020A100EO	\$ 1,783.20	346020A100ES	\$ 1,944.60	260	118
		B	22.16-22.81	563-579				346020B100EO		346020B100ES			
		C	22.78-23.45	579-596				346020C100EO		346020C100ES			
		D	23.46-24.16	596-614				346020D100EO		346020D100ES			
		E	24.15-24.85	613-631				346020E100EO		346020E100ES			
		F	24.82-25.52	630-648				346020F100EO		346020F100ES			
20	500	A	21.51-22.15	546-563	X	12	300	346020A120EO	\$ 1,884.00	346020A120ES	\$ 2,054.60	285	129
		B	22.16-22.81	563-579				346020B120EO		346020B120ES			
		C	22.78-23.45	579-596				346020C120EO		346020C120ES			
		D	23.46-24.16	596-614				346020D120EO		346020D120ES			
		E	24.15-24.85	613-631				346020E120EO		346020E120ES			
		F	24.82-25.52	630-648				346020F120EO		346020F120ES			

3460 FABRICATED CARBON STEEL TAP SLEEVE

Nominal Pipe Size		Letter Code	Pipe OD Range		BY	Branch Size Size		Bolts & Nuts: Low Alloy Steel		Bolts & Nuts: Stainless Steel		Weight	
Inches	MM		Inches	MM		Inches	MM	Part Number	List Price	Part Number	List Price	Lbs	Kgs
24	600	A	25.71-26.41	653-671	X	4	100	346024A040EO	\$ 962.70	346024A040ES	\$ 1,049.90	150	68
		B	26.55-27.25	674-692				346024B040EO		346024B040ES			
		C	27.26-27.96	692-710				346024C040EO		346024C040ES			
		D	28.14-28.84	715-733				346024D040EO		346024D040ES			
24	600	A	25.71-26.41	653-671	X	6	150	346024A060EO	\$ 1,084.40	346024A060ES	\$ 1,182.60	160	73
		B	26.55-27.25	674-692				346024B060EO		346024B060ES			
		C	27.26-27.96	692-710				346024C060EO		346024C060ES			
		D	28.14-28.84	715-733				346024D060EO		346024D060ES			
24	600	A	25.71-26.41	653-671	X	8	200	346024A080EO	\$ 1,405.30	346024A080ES	\$ 1,445.80	220	100
		B	26.55-27.25	674-692				346024B080EO		346024B080ES			
		C	27.26-27.96	692-710				346024C080EO		346024C080ES			
		D	28.14-28.84	715-733				346024D080EO		346024D080ES			
24	600	A	25.71-26.41	653-671	X	10	250	346024A100EO	\$ 1,886.60	346024A100ES	\$ 2,057.50	285	129
		B	26.55-27.25	674-692				346024B100EO		346024B100ES			
		C	27.26-27.96	692-710				346024C100EO		346024C100ES			
		D	28.14-28.84	715-733				346024D100EO		346024D100ES			
24	600	A	25.71-26.41	653-671	X	12	300	346024A120EO	\$ 2,013.50	346024A120ES	\$ 2,195.80	305	138
		B	26.55-27.25	674-692				346024B120EO		346024B120ES			
		C	27.26-27.96	692-710				346024C120EO		346024C120ES			
		D	28.14-28.84	715-733				346024D120EO		346024D120ES			
30	750	A	29.78-30.48	756-774	X	4	100	346030A040EO	\$ 1,043.40	346030A040ES	\$ 1,148.70	155	70
		B	30.48-31.18	774-792				346030B040EO		346030B040ES			
		C	31.52-32.22	801-818				346030C040EO		346030C040ES			
30	750	A	29.78-30.48	756-774	X	6	150	346030A060EO	\$ 1,203.40	346030A060ES	\$ 1,312.40	160	73
		B	30.48-31.18	774-792				346030B060EO		346030B060ES			
		C	31.52-32.22	801-818				346030C060EO		346030C060ES			
30	750	A	29.78-30.48	756-774	X	8	200	346030A080EO	\$ 1,585.30	346030A080ES	\$ 1,704.80	220	100
		B	30.48-31.18	774-792				346030B080EO		346030B080ES			
		C	31.52-32.22	801-818				346030C080EO		346030C080ES			
30	750	A	29.78-30.48	756-774	X	10	250	346030A100EO	\$ 1,941.00	346030A100ES	\$ 2,116.80	345	111
		B	30.48-31.18	774-792				346030B100EO		346030B100ES			
		C	31.52-32.22	801-818				346030C100EO		346030C100ES			
30	750	A	29.78-30.48	756-774	X	12	300	346030A120EO	\$ 2,054.90	346030A120ES	\$ 2,241.00	315	143
		B	30.48-31.18	774-792				346030B120EO		346030B120ES			
		C	31.52-32.22	801-818				346030C120EO		346030C120ES			

CUSTOM SIZES AVAILABLE.

HOW TO ORDER: Choose the Pipe Size Letter Code corresponding to a Pipe OD Range that covers the Pipe OD to be tapped and then specify the desired branch size. EXAMPLE: 16" Asbestos-Cement Class 150 O.D. 18.72 with 8 inch Branch size and alloy bolts. Order 3460 - 16D x 8. **Part Number:** 346016D080EO .

For Outlet Sizes 14" and above the tapping valve being used must be advised to PowerSeal in order to guarantee proper alignment recess mating.

3460MJ CARBON STEEL TAP SLEEVE W/MECHANICAL JOINT OUTLET

MJ OUTLET: Carbon Steel per AWWA C111. Solid One-Piece casting.

PANEL: Carbon Steel per ASTM A36.

BRANCH GASKET: NBR per ASTM D2000.

BOLTS & NUTS: Low Alloy Steel per ASTM A325, ASTM A563, and AWWA C111. Or Type 304 (18-8) Stainless Steel per ASTM A193 and A194.

FINISH: Epoxy per AWWA C210.



Nominal Pipe Size		Letter Code	Pipe OD Range		BY	Branch Size Size		Bolts & Nuts: Low Alloy Steel		Bolts & Nuts: Stainless Steel	
Inches	MM		Inches	MM		Inches	MM	Part Number	List Price	Part Number	List Price
4	100	A	4.50	114	X	4	100	346004A040E0-MJCS	\$ 726.00	346004A040ES-MJCS	\$ 946.00
		B	4.80	122				346004B040E0-MJCS		346004B040ES-MJCS	
6	150	A	6.56-6.69	167-170	X	4	100	346006A040E0-MJCS	\$ 825.30	346006A040ES-MJCS	\$ 984.50
		B	6.83-7.16	173-182				346006B040E0-MJCS		346006B040ES-MJCS	
		C	7.05-7.40	179-188				346006C040E0-MJCS		346006C040ES-MJCS	
		D	7.40-7.73	188-196				346006D040E0-MJCS		346006D040ES-MJCS	
6	150	A	6.56-6.69	167-170	X	6	150	346006A060E0-MJCS	\$ 987.00	346006A060ES-MJCS	\$ 1,127.50
		B	6.83-7.16	173-182				346006B060E0-MJCS		346006B060ES-MJCS	
		C	7.05-7.40	179-188				346006C060E0-MJCS		346006C060ES-MJCS	
		D	7.40-7.73	188-196				346006D060E0-MJCS		346006D060ES-MJCS	
8	200	A	7.80-8.16	198-207	X	4	100	346008A040E0-MJCS	\$ 842.10	346008A040ES-MJCS	\$ 1,005.40
		B	8.53-8.72	217-221				346008B040E0-MJCS		346008B040ES-MJCS	
		C	8.98-9.37	228-238				346008C040E0-MJCS		346008C040ES-MJCS	
		D	9.27-9.69	235-246				346008D040E0-MJCS		346008D040ES-MJCS	
8	200	A	7.80-8.16	198-207	X	6	150	346008A060E0-MJCS	\$ 1,009.10	346008A060ES-MJCS	\$ 1,133.00
		B	8.53-8.72	217-221				346008B060E0-MJCS		346008B060ES-MJCS	
		C	8.98-9.37	228-238				346008C060E0-MJCS		346008C060ES-MJCS	
		D	9.27-9.69	235-246				346008D060E0-MJCS		346008D060ES-MJCS	
8	200	A	7.80-8.16	198-207	X	8	200	346008A080E0-MJCS	\$ 1,295.70	346008A080ES-MJCS	\$ 1,483.90
		B	8.53-8.72	217-221				346008B080E0-MJCS		346008B080ES-MJCS	
		C	8.98-9.37	228-238				346008C080E0-MJCS		346008C080ES-MJCS	
		D	9.27-9.69	235-246				346008D080E0-MJCS		346008D080ES-MJCS	
10	250	A	9.83-10.25	250-260	X	4	100	346010A040E0-MJCS	\$ 891.50	346010A040ES-MJCS	\$ 1,043.90
		B	10.64-10.86	270-276				346010B040E0-MJCS		346010B040ES-MJCS	
		C	11.03-11.47	280-291				346010C040E0-MJCS		346010C040ES-MJCS	
		D	11.36-11.80	289-300				346010D040E0-MJCS		346010D040ES-MJCS	
		E	11.76-12.24	299-311				346010E040E0-MJCS		346010E040ES-MJCS	
10	250	A	9.83-10.25	250-260	X	6	150	346010A060E0-MJCS	\$ 1,021.70	346010A060ES-MJCS	\$ 1,177.00
		B	10.64-10.86	270-276				346010B060E0-MJCS		346010B060ES-MJCS	
		C	11.03-11.47	280-291				346010C060E0-MJCS		346010C060ES-MJCS	
		D	11.36-11.80	289-300				346010D060E0-MJCS		346010D060ES-MJCS	
		E	11.76-12.24	299-311				346010E060E0-MJCS		346010E060ES-MJCS	

3460MJ CARBON STEEL TAP SLEEVE W/MECHANICAL JOINT OUTLET

Nominal Pipe Size		Letter Code	Pipe OD Range		BY	Branch Size Size		Bolts & Nuts: Low Alloy Steel		Bolts & Nuts: Stainless Steel	
Inches	MM		Inches	MM		Inches	MM	Part Number	List Price	Part Number	List Price
10	250	A	9.83-10.25	250-260	X	8	200	346010A080EO-MJCS	\$ 1,362.90	346010A080ES-MJCS	\$ 1,510.30
		B	10.64-10.86	270-276				346010B080EO-MJCS		346010B080ES-MJCS	
		C	11.03-11.47	280-291				346010C080EO-MJCS		346010C080ES-MJCS	
		D	11.36-11.80	289-300				346010D080EO-MJCS		346010D080ES-MJCS	
		E	11.76-12.24	299-311				346010E080EO-MJCS		346010E080ES-MJCS	
10	250	B	10.64-10.86	270-276	X	10	250	346010B100EO-MJCS	\$ 1,716.80	346010B100ES-MJCS	\$ 1,915.10
		C	11.03-11.47	280-291				346010C100EO-MJCS		346010C100ES-MJCS	
		D	11.36-11.80	289-300				346010D100EO-MJCS		346010D100ES-MJCS	
		E	11.76-12.24	299-311				346010E100EO-MJCS		346010E100ES-MJCS	
12	300	A	12.62-12.88	321-327	X	4	100	346012A040EO-MJCS	\$ 950.30	346012A040ES-MJCS	\$ 1,096.70
		B	13.13-13.60	334-345				346012B040EO-MJCS		346012B040ES-MJCS	
		C	13.60-14.09	345-358				346012C040EO-MJCS		346012C040ES-MJCS	
		D	14.09-14.56	358-370				346012D040EO-MJCS		346012D040ES-MJCS	
12	300	A	12.62-12.88	321-327	X	6	150	346012A060EO-MJCS	\$ 1,091.00	346012A060ES-MJCS	\$ 1,247.40
		B	13.13-13.60	334-345				346012B060EO-MJCS		346012B060ES-MJCS	
		C	13.60-14.09	345-358				346012C060EO-MJCS		346012C060ES-MJCS	
		D	14.09-14.56	358-370				346012D060EO-MJCS		346012D060ES-MJCS	
12	300	A	12.62-12.88	321-327	X	8	200	346012A080EO-MJCS	\$ 1,440.60	346012A080ES-MJCS	\$ 1,615.90
		B	13.13-13.60	334-345				346012B080EO-MJCS		346012B080ES-MJCS	
		C	13.60-14.09	345-358				346012C080EO-MJCS		346012C080ES-MJCS	
		D	14.09-14.56	358-370				346012D080EO-MJCS		346012D080ES-MJCS	
12	300	A	12.62-12.88	321-327	X	10	250	346012A100EO-MJCS	\$ 1,932.00	346012A100ES-MJCS	\$ 2,129.60
		B	13.13-13.60	334-345				346012B100EO-MJCS		346012B100ES-MJCS	
		C	13.60-14.09	345-358				346012C100EO-MJCS		346012C100ES-MJCS	
		D	14.09-14.56	358-370				346012D100EO-MJCS		346012D100ES-MJCS	
12	300	A	12.62-12.88	321-327	X	12	300	346012A120EO-MJCS	\$ 2,108.40	346012A120ES-MJCS	\$ 2,313.30
		B	13.13-13.60	334-345				346012B120EO-MJCS		346012B120ES-MJCS	
		C	13.60-14.09	345-358				346012C120EO-MJCS		346012C120ES-MJCS	
		D	14.09-14.56	358-370				346012D120EO-MJCS		346012D120ES-MJCS	
14	350	A	14.59-15.08	371-383	X	4	100	346014A040EO-MJCS	\$ 1,009.10	346014A040ES-MJCS	\$ 1,127.50
		B	15.23-15.80	387-401				346014B040EO-MJCS		346014B040ES-MJCS	
		C	15.73-16.22	400-412				346014C040EO-MJCS		346014C040ES-MJCS	
		D	16.30-16.73	414-425				346014D040EO-MJCS		346014D040ES-MJCS	
14	350	A	14.59-15.08	371-383	X	6	150	346014A060EO-MJCS	\$ 1,148.70	346014A060ES-MJCS	\$ 1,289.20
		B	15.23-15.80	387-401				346014B060EO-MJCS		346014B060ES-MJCS	
		C	15.73-16.22	400-412				346014C060EO-MJCS		346014C060ES-MJCS	
		D	16.30-16.73	414-425				346014D060EO-MJCS		346014D060ES-MJCS	
14	350	A	14.59-15.08	371-383	X	8	200	346014A080EO-MJCS	\$ 1,522.50	346014A080ES-MJCS	\$ 1,678.60
		B	15.23-15.80	387-401				346014B080EO-MJCS		346014B080ES-MJCS	
		C	15.73-16.22	400-412				346014C080EO-MJCS		346014C080ES-MJCS	
		D	16.30-16.73	414-425				346014D080EO-MJCS		346014D080ES-MJCS	

3460MJ CARBON STEEL TAP SLEEVE W/MECHANICAL JOINT OUTLET

Nominal Pipe Size		Letter Code	Pipe OD Range		BY	Branch Size Size		Bolts & Nuts: Low Alloy Steel		Bolts & Nuts: Stainless Steel	
Inches	MM		Inches	MM		Inches	MM	Part Number	List Price	Part Number	List Price
14	350	A	14.59-15.08	371-383	X	10	250	346014A100EO-MJCS	\$ 2,026.50	346014A100ES-MJCS	\$ 2,159.30
		B	15.23-15.80	387-401				346014B100EO-MJCS		346014B100ES-MJCS	
		C	15.73-16.22	400-412				346014C100EO-MJCS		346014C100ES-MJCS	
		D	16.30-16.73	414-425				346014D100EO-MJCS		346014D100ES-MJCS	
14	350	A	14.59-15.08	371-383	X	12	300	346014A120EO-MJCS	\$ 2,202.90	346014A120ES-MJCS	\$ 2,394.70
		B	15.23-15.80	387-401				346014B120EO-MJCS		346014B120ES-MJCS	
		C	15.73-16.22	400-412				346014C120EO-MJCS		346014C120ES-MJCS	
		D	16.30-16.73	414-425				346014D120EO-MJCS		346014D120ES-MJCS	
16	400	A	16.74-17.26	425-438	X	4	100	346016A040EO-MJCS	\$ 1,024.80	346016A040ES-MJCS	\$ 1,162.70
		B	17.33-17.87	440-454				346016B040EO-MJCS		346016B040ES-MJCS	
		C	17.88-18.43	473-487				346016C040EO-MJCS		346016C040ES-MJCS	
		D	18.62-19.19	454-468				346016D040EO-MJCS		346016D040ES-MJCS	
16	400	A	16.74-17.26	425-438	X	6	150	346016A060EO-MJCS	\$ 1,200.20	346016A060ES-MJCS	\$ 1,344.20
		B	17.33-17.87	440-454				346016B060EO-MJCS		346016B060ES-MJCS	
		C	17.88-18.43	473-487				346016C060EO-MJCS		346016C060ES-MJCS	
		D	18.62-19.19	454-468				346016D060EO-MJCS		346016D060ES-MJCS	
16	400	A	16.74-17.26	425-438	X	8	200	346016A080EO-MJCS	\$ 1,587.60	346016A080ES-MJCS	\$ 1,745.70
		B	17.33-17.87	440-454				346016B080EO-MJCS		346016B080ES-MJCS	
		C	17.88-18.43	473-487				346016C080EO-MJCS		346016C080ES-MJCS	
		D	18.62-19.19	454-468				346016D080EO-MJCS		346016D080ES-MJCS	
16	400	A	16.74-17.26	425-438	X	10	250	346016A100EO-MJCS	\$ 2,080.10	346016A100ES-MJCS	\$ 2,270.40
		B	17.33-17.87	440-454				346016B100EO-MJCS		346016B100ES-MJCS	
		C	17.88-18.43	473-487				346016C100EO-MJCS		346016C100ES-MJCS	
		D	18.62-19.19	454-468				346016D100EO-MJCS		346016D100ES-MJCS	
16	400	A	16.74-17.26	425-438	X	12	300	346016A120EO-MJCS	\$ 2,286.90	346016A120ES-MJCS	\$ 2,475.00
		B	17.33-17.87	440-454				346016B120EO-MJCS		346016B120ES-MJCS	
		C	17.88-18.43	473-487				346016C120EO-MJCS		346016C120ES-MJCS	
		D	18.62-19.19	454-468				346016D120EO-MJCS		346016D120ES-MJCS	
18	450	A	18.87-19.45	479-494	X	4	100	346018A040EO-MJCS	\$ 1,057.40	346018A040ES-MJCS	\$ 1,184.70
		B	19.41-20.01	493-508				346018B040EO-MJCS		346018B040ES-MJCS	
		C	20.00-20.60	508-523				346018C040EO-MJCS		346018C040ES-MJCS	
		D	20.29-20.94	515-532				346018D040EO-MJCS		346018D040ES-MJCS	
		E	20.93-21.57	532-548				346018E034EO-MJCS		346018E034ES-MJCS	
18	450	A	18.87-19.45	479-494	X	6	150	346018A060EO-MJCS	\$ 1,232.70	346018A060ES-MJCS	\$ 1,357.40
		B	19.41-20.01	493-508				346018B060EO-MJCS		346018B060ES-MJCS	
		C	20.00-20.60	508-523				346018C060EO-MJCS		346018C060ES-MJCS	
		D	20.29-20.94	515-532				346018D060EO-MJCS		346018D060ES-MJCS	
		E	20.93-21.57	532-548				346018E060EO-MJCS		346018E060ES-MJCS	
18	450	A	18.87-19.45	479-494	X	8	200	346018A080EO-MJCS	\$ 1,625.40	346018A080ES-MJCS	\$ 1,774.30
		B	19.41-20.01	493-508				346018B080EO-MJCS		346018B080ES-MJCS	
		C	20.00-20.60	508-523				346018C080EO-MJCS		346018C080ES-MJCS	
		D	20.29-20.94	515-532				346018D080EO-MJCS		346018D080ES-MJCS	
		E	20.93-21.57	532-548				346018E080EO-MJCS		346018E080ES-MJCS	

3460MJ CARBON STEEL TAP SLEEVE W/MECHANICAL JOINT OUTLET

Nominal Pipe Size		Letter Code	Pipe OD Range		BY	Branch Size Size		Bolts & Nuts: Low Alloy Steel		Bolts & Nuts: Stainless Steel	
Inches	MM		Inches	MM		Inches	MM	Part Number	List Price	Part Number	List Price
18	450	A	18.87-19.45	479-494	X	10	250	346018A100EO-MJCS	\$ 2,139.90	346018A100ES-MJCS	\$ 2,325.40
		B	19.41-20.01	493-508				346018B100EO-MJCS		346018B100ES-MJCS	
		C	20.00-20.60	508-523				346018C100EO-MJCS		346018C100ES-MJCS	
		D	20.29-20.94	515-532				346018D100EO-MJCS		346018D100ES-MJCS	
		E	20.93-21.57	532-548				346018E100EO-MJCS		346018E100ES-MJCS	
18	400	A	18.87-19.45	479-494	X	12	300	346018A120EO-MJCS	\$ 2,345.70	346018A120ES-MJCS	\$ 2,521.20
		B	19.41-20.01	493-508				346018B120EO-MJCS		346018B120ES-MJCS	
		C	20.00-20.60	508-523				346018C120EO-MJCS		346018C120ES-MJCS	
		D	20.29-20.94	515-532				346018D120EO-MJCS		346018D120ES-MJCS	
		E	20.93-21.57	532-548				346018E120EO-MJCS		346018E120ES-MJCS	
20	500	A	21.51-22.15	546-563	X	4	100	346020A040EO-MJCS	\$ 1,079.40	346020A040ES-MJCS	\$ 1,263.90
		B	22.16-22.81	563-579				346020B040EO-MJCS		346020B040ES-MJCS	
		C	22.78-23.45	579-596				346020C040EO-MJCS		346020C040ES-MJCS	
		D	23.46-24.16	596-614				346020D040EO-MJCS		346020D040ES-MJCS	
		E	24.15-24.85	613-631				346020E040EO-MJCS		346020E040ES-MJCS	
		F	24.82-25.52	630-648				346020F040EO-MJCS		346020F040ES-MJCS	
20	500	A	21.51-22.15	546-563	X	6	150	346020A060EO-MJCS	\$ 1,268.40	346020A060ES-MJCS	\$ 1,454.20
		B	22.16-22.81	563-579				346020B060EO-MJCS		346020B060ES-MJCS	
		C	22.78-23.45	579-596				346020C060EO-MJCS		346020C060ES-MJCS	
		D	23.46-24.16	596-614				346020D060EO-MJCS		346020D060ES-MJCS	
		E	24.15-24.85	613-631				346020E060EO-MJCS		346020E060ES-MJCS	
		F	24.82-25.52	630-648				346020F060EO-MJCS		346020F060ES-MJCS	
20	500	A	21.51-22.15	546-563	X	8	200	346020A080EO-MJCS	\$ 1,685.30	346020A080ES-MJCS	\$ 1,898.60
		B	22.16-22.81	563-579				346020B080EO-MJCS		346020B080ES-MJCS	
		C	22.78-23.45	579-596				346020C080EO-MJCS		346020C080ES-MJCS	
		D	23.46-24.16	596-614				346020D080EO-MJCS		346020D080ES-MJCS	
		E	24.15-24.85	613-631				346020E080EO-MJCS		346020E080ES-MJCS	
		F	24.82-25.52	630-648				346020F080EO-MJCS		346020F080ES-MJCS	
20	500	A	21.51-22.15	546-563	X	10	250	346020A100EO-MJCS	\$ 2,205.00	346020A100ES-MJCS	\$ 2,405.70
		B	22.16-22.81	563-579				346020B100EO-MJCS		346020B100ES-MJCS	
		C	22.78-23.45	579-596				346020C100EO-MJCS		346020C100ES-MJCS	
		D	23.46-24.16	596-614				346020D100EO-MJCS		346020D100ES-MJCS	
		E	24.15-24.85	613-631				346020E100EO-MJCS		346020E100ES-MJCS	
		F	24.82-25.52	630-648				346020F100EO-MJCS		346020F100ES-MJCS	
20	500	A	21.51-22.15	546-563	X	12	300	346020A120EO-MJCS	\$ 2,378.30	346020A120ES-MJCS	\$ 2,690.60
		B	22.16-22.81	563-579				346020B120EO-MJCS		346020B120ES-MJCS	
		C	22.78-23.45	579-596				346020C120EO-MJCS		346020C120ES-MJCS	
		D	23.46-24.16	596-614				346020D120EO-MJCS		346020D120ES-MJCS	
		E	24.15-24.85	613-631				346020E120EO-MJCS		346020E120ES-MJCS	
		F	24.82-25.52	630-648				346020F120EO-MJCS		346020F120ES-MJCS	

3460MJ CARBON STEEL TAP SLEEVE W/MECHANICAL JOINT OUTLET

Nominal Pipe Size		Letter Code	Pipe OD Range		BY	Branch Size Size		Bolts & Nuts: Low Alloy Steel		Bolts & Nuts: Stainless Steel	
Inches	MM		Inches	MM		Inches	MM	Part Number	List Price	Part Number	List Price
24	600	A	25.71-26.41	653-671	X	4	100	346024A040E0-MJCS	\$ 1,220.10	346024A040ES-MJCS	\$ 1,347.50
		B	26.55-27.25	674-692				346024B040E0-MJCS		346024B040ES-MJCS	
		C	27.26-27.96	692-710				346024C040E0-MJCS		346024C040ES-MJCS	
		D	28.14-28.84	715-733				346024D040E0-MJCS		346024D040ES-MJCS	
24	600	A	25.71-26.41	653-671	X	6	150	346024A060E0-MJCS	\$ 1,415.40	346024A060ES-MJCS	\$ 1,554.30
		B	26.55-27.25	674-692				346024B060E0-MJCS		346024B060ES-MJCS	
		C	27.26-27.96	692-710				346024C060E0-MJCS		346024C060ES-MJCS	
		D	28.14-28.84	715-733				346024D060E0-MJCS		346024D060ES-MJCS	
24	600	A	25.71-26.41	653-671	X	8	200	346024A080E0-MJCS	\$ 1,363.80	346024A080ES-MJCS	\$ 2,051.50
		B	26.55-27.25	674-692				346024B080E0-MJCS		346024B080ES-MJCS	
		C	27.26-27.96	692-710				346024C080E0-MJCS		346024C080ES-MJCS	
		D	28.14-28.84	715-733				346024D080E0-MJCS		346024D080ES-MJCS	
24	600	A	25.71-26.41	653-671	X	10	250	346024A100E0-MJCS	\$ 2,464.40	346024A100ES-MJCS	\$ 2,701.60
		B	26.55-27.25	674-692				346024B100E0-MJCS		346024B100ES-MJCS	
		C	27.26-27.96	692-710				346024C100E0-MJCS		346024C100ES-MJCS	
		D	28.14-28.84	715-733				346024D100E0-MJCS		346024D100ES-MJCS	
24	600	A	25.71-26.41	653-671	X	12	300	346024A120E0-MJCS	\$ 2,637.60	346024A120ES-MJCS	\$ 2,887.50
		B	26.55-27.25	674-692				346024B120E0-MJCS		346024B120ES-MJCS	
		C	27.26-27.96	692-710				346024C120E0-MJCS		346024C120ES-MJCS	
		D	28.14-28.84	715-733				346024D120E0-MJCS		346024D120ES-MJCS	
30	750	A	29.78-30.48	756-774	X	4	100	346030A040E0-MJCS	\$ 1,298.90	346030A040ES-MJCS	\$ 1,472.90
		B	30.48-31.18	774-792				346030B040E0-MJCS		346030B040ES-MJCS	
		C	31.52-32.22	801-818				346030C040E0-MJCS		346030C040ES-MJCS	
30	750	A	29.78-30.48	756-774	X	6	150	346030A060E0-MJCS	\$ 1,505.70	346030A060ES-MJCS	\$ 1,686.30
		B	30.48-31.18	774-792				346030B060E0-MJCS		346030B060ES-MJCS	
		C	31.52-32.22	801-818				346030C060E0-MJCS		346030C060ES-MJCS	
30	750	A	29.78-30.48	756-774	X	8	200	346030A080E0-MJCS	\$ 2,012.90	346030A080ES-MJCS	\$ 2,201.10
		B	30.48-31.18	774-792				346030B080E0-MJCS		346030B080ES-MJCS	
		C	31.52-32.22	801-818				346030C080E0-MJCS		346030C080ES-MJCS	
30	750	A	29.78-30.48	756-774	X	10	250	346030A100E0-MJCS	\$ 2,677.50	346030A100ES-MJCS	\$ 2,929.30
		B	30.48-31.18	774-792				346030B100E0-MJCS		346030B100ES-MJCS	
		C	31.52-32.22	801-818				346030C100E0-MJCS		346030C100ES-MJCS	
30	750	A	29.78-30.48	756-774	X	12	300	346030A120E0-MJCS	\$ 2,808.80	346030A120ES-MJCS	\$ 3,034.90
		B	30.48-31.18	774-792				346030B120E0-MJCS		346030B120ES-MJCS	
		C	31.52-32.22	801-818				346030C120E0-MJCS		346030C120ES-MJCS	

CUSTOM SIZES AVAILABLE.

HOW TO ORDER: Choose the Pipe Size Letter Code corresponding to a Pipe OD Range that covers the Pipe OD to be tapped, then specify the desired branch size and type of bolts. EXAMPLE: 16" Asbestos-Cement Class 150 O.D. 19.60 with 8 inch MJ Branch and Stainless Steel bolts and nuts. Order 3460MJCS -18B x 8. **Part Number:** 346018B080ES-MJCS .

For Outlet Sizes 14" and above the tapping valve being used must be advised to PowerSeal in order to guarantee proper alignment recess mating.

*Manufactured under U.S. Patent 6,330,771.

3465 TAP SLEEVE W/THREADED OUTLET

(FOR UNIQUE TAPPING REQUIREMENTS, LARGER DIAMETER PIPES AND THIN WALL PIPE NEEDING STABILIZATION)

OUTLET: Carbon Steel per ASTM A36 and AWWA C207.

PANEL: Carbon Steel per ASTM A36.

BRANCH GASKET: NBR per ASTM D2000.

BOLTS & NUTS: Low Alloy Steel per ASTM A325, ASTM A563, and AWWA C111. Or Type 304 (18-8) Stainless Steel per ASTM A193 and A194.

FINISH: Epoxy per AWWA C210.



Nominal Pipe Size		Letter Code	Pipe OD Range		Outlet Size	Part Number	List Price	Weight	
Inches	MM		MM	Inches					
4	100	A	4.50	114	3/4 NPT	346504A075TC	\$ 374.40	21	9
					1 NPT	346504A100TE			
					1 1/4 NPT	346504A125TG			
					1 1/2 NPT	346504A150TI			
					2 NPT	346504A200TK			
					3 NPT	346504A300TP			
					4 NPT	346504A400TM	\$ 433.70		
4	100	B	4.80	121	3/4 NPT	346504B075TC	\$ 374.40	21	9
					1 NPT	346504B100TE			
					1 1/4 NPT	346504B125TG			
					1 1/2 NPT	346504B150TI			
					2 NPT	346504B200TK			
					3 NPT	346504B300TP			
					4 NPT	346504B400TM	\$ 433.70		
6	150	A	6.63	168	3/4 NPT	346506A075TC	\$ 405.50	23	10
					1 NPT	346506A100TE			
					1 1/4 NPT	346506A125TG			
					1 1/2 NPT	346506A150TI			
					2 NPT	346506A200TK			
					3 NPT	346506A300TP			
					4 NPT	346506A400TM	\$ 463.40		
6	150	B	6.90	175	3/4 NPT	346506B075TC	\$ 405.50	23	10
					1 NPT	346506B100TE			
					1 1/4 NPT	346506B125TG			
					1 1/2 NPT	346506B150TI			
					2 NPT	346506B200TK			
					3 NPT	346506B300TP			
					4 NPT	346506B400TM	\$ 463.40		
8	200	A	8.63	219	3/4 NPT	346508A075TC	\$ 426.00	31	14
					1 NPT	346508A100TE			
					1 1/4 NPT	346508A125TG			
					1 1/2 NPT	346508A150TI			
					2 NPT	346508A200TK			
					3 NPT	346508A300TP			
					4 NPT	346508A400TM	\$ 485.20	33	14

3465 TAP SLEEVE W/THREADED OUTLET

Nominal Pipe Size		Letter Code	Pipe OD Range		Outlet Size	Part Number	List Price	Weight	
Inches	MM		MM	Inches					
8	200	B	9.05	229	3/4 NPT	346508B075TC	\$ 426.00	31	14
					1 NPT	346508B100TE			
					1 1/4 NPT	346508B125TG			
					1 1/2 NPT	346508B150TI			
					2 NPT	346508B200TK			
					3 NPT	346508B300TP			
					4 NPT	346508B400TM			
10	250	A	10.75	273	3/4 NPT	346510A075TC	\$ 449.40	38	17
					1 NPT	346510A100TE			
					1 1/4 NPT	346510A125TG			
					1 1/2 NPT	346510A150TI			
					2 NPT	346510A200TK			
					3 NPT	346510A300TP			
					4 NPT	346510A400TM			
10	250	B	11.10	281	3/4 NPT	346510B075TC	\$ 449.40	38	17
					1 NPT	346510B100TE			
					1 1/4 NPT	346510B125TG			
					1 1/2 NPT	346510B150TI			
					2 NPT	346510B200TK			
					3 NPT	346510B300TP			
					4 NPT	346510B400TM			
12	300	A	12.75	323	3/4 NPT	346512A075TC	\$ 475.20	48	21
					1 NPT	346512A100TE			
					1 1/4 NPT	346512A125TG			
					1 1/2 NPT	346512A150TI			
					2 NPT	346512A200TK			
					3 NPT	346512A300TP			
					4 NPT	346512A400TM			
12	300	B	13.20	335	3/4 NPT	346512B075TC	\$ 475.20	48	21
					1 NPT	346512B100TE			
					1 1/4 NPT	346512B125TG			
					1 1/2 NPT	346512B150TI			
					2 NPT	346512B200TK			
					3 NPT	346512B300TP			
					4 NPT	346512B400TM			

3465 TAP SLEEVE W/THREADED OUTLET

Nominal Pipe Size		Letter Code	Pipe OD Range		Outlet Size	Part Number	List Price	Weight	
Inches	MM		MM	Inches					
14	350	A	14.59-15.08	370-383	3/4 NPT	346514A075TC	\$ 558.30	54	24
					1 NPT	346514A100TE			
					1 1/4 NPT	346514A125TG			
					1 1/2 NPT	346514A150TI			
					2 NPT	346514A200TK			
					3 NPT	346514A300TP			
					4 NPT	346514A400TM			
		B	15.23-15.80	386-401	3/4 NPT	346514B075TC	\$ 558.30	57	25
					1 NPT	346514B100TE			
					1 1/4 NPT	346514B125TG			
					1 1/2 NPT	346514B150TI			
					2 NPT	346514B200TK			
					3 NPT	346514B300TP			
					4 NPT	346514B400TM			
14	350	B	15.23-15.80	386-401	2 NPT	346514B200TK	\$ 558.30	57	25
					3 NPT	346514B300TP			
					4 NPT	346514B400TM			
		C	16.30-16.70	414-424	3/4 NPT	346514C075TC	\$ 558.30	60	27
					1 NPT	346514C100TE			
					1 1/4 NPT	346514C125TG			
					1 1/2 NPT	346514C150TI			
					2 NPT	346514C200TK			
					3 NPT	346514C300TP			
					4 NPT	346514C400TM			
		A	17.33-17.87	440-453	3/4 NPT	346516A075TC	\$ 583.20	64	29
					1 NPT	346516A100TE			
					1 1/4 NPT	346516A125TG			
					1 1/2 NPT	346516A150TI			
2 NPT	346516A200TK								
3 NPT	346516A300TP								
4 NPT	346516A400TM								
B	18.62-19.19	472-487	3/4 NPT	346516B075TC	\$ 583.20	68	30		
			1 NPT	346516B100TE					
			1 1/4 NPT	346516B125TG					
			1 1/2 NPT	346516B150TI					
			2 NPT	346516B200TK					
			3 NPT	346516B300TP					
			4 NPT	346516B400TM					
					\$ 662.00				

3465 TAP SLEEVE W/THREADED OUTLET

Nominal Pipe Size		Letter Code	Pipe OD Range		Outlet Size	Part Number	List Price	Weight	
Inches	MM		MM	Inches					
18	450	A	19.41-20.01	493-508	3/4 NPT	346518A075TC	\$ 607.00	72	32
					1 NPT	346518A100TE			
					1 1/4 NPT	346518A125TG			
					1 1/2 NPT	346518A150TI			
					2 NPT	346518A200TK			
					3 NPT	346518A300TP			
					4 NPT	346518A400TM			
		B	20.93-21.57	531-547	3/4 NPT	346518B075TC	\$ 607.00	77	34
					1 NPT	346518B100TE			
					1 1/4 NPT	346518B125TG			
					1 1/2 NPT	346518B150TI			
					2 NPT	346518B200TK			
					3 NPT	346518B300TP			
					4 NPT	346518B400TM			
20	500	A	21.51-22.15	546-562	3/4 NPT	346520A075TC	\$ 635.20	80	36
					1 NPT	346520A100TE			
					1 1/4 NPT	346520A125TG			
					1 1/2 NPT	346520A150TI			
					2 NPT	346520A200TK			
					3 NPT	346520A300TP			
					4 NPT	346520A400TM			
20	500	B	23.46-24.16	595-613	3/4 NPT	346520B075TC	\$ 635.20	80	36
					1 NPT	346520B100TE			
					1 1/4 NPT	346520B125TG			
					1 1/2 NPT	346520B150TI			
					2 NPT	346520B200TK			
					3 NPT	346520B300TP			
					4 NPT	346520B400TM			
24	600	A	25.71-26.41	653-670	3/4 NPT	346524A075TC	\$ 687.80	95	43
					1 NPT	346524A100TE			
					1 1/4 NPT	346524A125TG			
					1 1/2 NPT	346524A150TI			
					2 NPT	346524A200TK			
					3 NPT	346524A300TP			
					4 NPT	346524A400TM			
		B	28.14-28.84	714- 732	3/4 NPT	346524B075TC	\$ 687.80	104	47
					1 NPT	346524B100TE			
					1 1/4 NPT	346524B125TG			
					1 1/2 NPT	346524B150TI			
					2 NPT	346524B200TK			
					3 NPT	346524B300TP			
					4 NPT	346524B400TM			

3465 TAP SLEEVE W/THREADED OUTLET

Nominal Pipe Size		Letter Code	Pipe OD Range		Outlet Size	Part Number	List Price	Weight	
Inches	MM		MM	Inches					
30	750	A	31.52-32.22	800-818	3/4 NPT	346530A075TC	\$ 745.60	115	52
					1 NPT	346530A100TE			
					1 1/4 NPT	346530A125TG			
					1 1/2 NPT	346530A150TI			
					2 NPT	346530A200TK			
					3 NPT	346530A300TP			
					4 NPT	346530A400TM	\$ 825.30		
36	900	A	38.10-38.75	967-984	3/4 NPT	346536A075TC	\$ 821.50	139	63
					1 NPT	346536A100TE			
					1 1/4 NPT	346536A125TG			
					1 1/2 NPT	346536A150TI			
					2 NPT	346536A200TK			
					3 NPT	346536A300TP			
					4 NPT	346536A400TM	\$ 902.70		
42	1050	A	44.10-44.70	1120-1135	3/4 NPT	346542A075TC	\$ 890.20	160	72
					1 NPT	346542A100TE			
					1 1/4 NPT	346542A125TG			
					1 1/2 NPT	346542A150TI			
					2 NPT	346542A200TK			
					3 NPT	346542A300TP			
					4 NPT	346542A400TM	\$ 971.00		
48	1200	A	50.40-51.00	1280-1295	3/4 NPT	346548A075TC	\$ 1,138.10	183	83
					1 NPT	346548A100TE			
					1 1/4 NPT	346548A125TG			
48	1200	A	50.40-51.00	1280-1295	1 1/2 NPT	346548A150TI	\$ 1,138.10	183	83
					2 NPT	346548A200TK			
					3 NPT	346548A300TP	\$ 1,305.80		
					4 NPT	346548A400TM			
54	1650	A	56.60-57.25	1437-1454	3/4 NPT	346554A075TC	\$ 1,225.00	205	92
					1 NPT	346554A100TE			
					1 1/4 NPT	346554A125TG			
					1 1/2 NPT	346554A150TI			
					2 NPT	346554A200TK			
					3 NPT	346554A300TP			
					4 NPT	346554A400TM	\$ 1,305.80		

CUSTOM SIZES AVAILABLE. Other options: CC thread configurations. Stainless Steel Bolts & Nuts also available upon request. (Additional charges apply)

HOW TO ORDER: Choose the Pipe Size Letter Code corresponding to a Pipe OD Range that covers the Pipe OD to be tapped and then specify the desired Outlet size. EXAMPLE: 16" Asbestos-Cement Class 150 O.D. 18.72 with 1" NPT Threaded Outlet . Order 3465CS - 16B x 1 NPT. **Part Number:** 346516B100TE .



COATING OPTION: Anti-Seizing/Galling protection. Available for both Alloy and SST application. Inquire with sales for cost and availability.

3480AS / 3480CS TAP SLEEVE W/FLANGE OUTLET

FLANGE: Type 304 (18-8) Stainless Steel or A36 Carbon Steel per AWWA C207.

PANEL: Type 304 (18-8) Stainless Steel per ASTM A240.

SHELL GASKET: SBR Chek-0-Seal with multi o-ring sealing ribs from 100% new rubber to ensure performance under varying pressures with superior storage characteristics. Suitable for mild acids, water and salt media with a temperature range of -25°F to +200°F per ASTM D2000. Other materials available.

BRANCH GASKET: NBR per ASTM D2000 with Hydro TwinSeal® dual o-ring design incorporating both hydrostatic and mechanical forces to affect a dynamic seal.

BOLTS & NUTS: Type 304 (18-8) Stainless Steel per ASTM A193 and A194. NOTE: Hex nuts are furnished with fusion bonded coating to prevent seizing and galling.

WASHERS: Delrin per ASTM D6778.



Nominal Pipe Size		Letter Code	Pipe OD Range		BY	Branch Size		Stainless Steel Flange		Carbon Steel Flange	
Inches	MM		Inches	MM		Inches	MM	Part Number	List Price	Part Number	List Price
4	100	A	4.50-4.70	114-119	X	2	50	348004A020AS	\$ 1,075.80	348004A020CS	\$ 1,020.20
		B	4.70-4.90	119-124				348004B020AS		348004B020CS	
		C	4.80-5.00	112-127				348004C020AS		348004C020CS	
		D	5.10-5.30	130-135				348004D020AS		348004D020CS	
		E	5.20-5.40	132-137				348004E020AS		348004E020CS	
4	100	A	4.50-4.70	114-119	X	3	80	348004A030AS	\$ 1,086.70	348004A030CS	\$ 1,031.20
		B	4.70-4.90	119-124				348004B030AS		348004B030CS	
		C	4.80-5.00	112-127				348004C030AS		348004C030CS	
		D	5.10-5.30	130-135				348004D030AS		348004D030CS	
		E	5.20-5.40	132-137				348004E030AS		348004E030CS	
4	100	A	4.50-4.70	114-119	X	4	100	348004A040AS	\$ 1,092.20	348004A040CS	\$ 1,042.20
		B	4.70-4.90	119-124				348004B040AS		348004B040CS	
		C	4.80-5.00	112-127				348004C040AS		348004C040CS	
		D	5.10-5.30	130-135				348004D040AS		348004D040CS	
		E	5.20-5.40	132-137				348004E040AS		348004E040CS	
6	150	A	6.00-6.20	152-157	X	2	50	348006A020AS	\$ 1,121.10	348006A020CS	\$ 1,063.90
		B	6.60-7.00	168-178				348006B020AS		348006B020CS	
		C	6.90-7.30	175-185				348006C020AS		348006C020CS	
		D	7.10-7.50	180-191				348006D020AS		348006D020CS	
6	150	A	6.00-6.20	152-157	X	3	80	348006A030AS	\$ 1,132.60	348006A030CS	\$ 1,075.40
		B	6.60-7.00	168-178				348006B030AS		348006B030CS	
		C	6.90-7.30	175-185				348006C030AS		348006C030CS	
		D	7.10-7.50	180-191				348006C030AS		348006D030CS	
6	150	A	6.00-6.20	152-157	X	4	100	348006A040AS	\$ 1,138.30	348006A040CS	\$ 1,086.80
		B	6.60-7.00	168-178				348006B040AS		348006B040CS	
		C	6.90-7.30	175-185				348006C040AS		348006C040CS	
		D	7.10-7.50	180-191				348006D040AS		348006D040CS	
6	150	B	6.60-7.00	168-178	X	6	150	348006B060AS	\$ 1,298.10	348006B060CS	\$ 1,239.40
		C	6.90-7.30	175-185				348006C060AS		348006C060CS	
		D	7.10-7.50	180-191				348006D060AS		348006D060CS	

3480AS / 3480CS TAP SLEEVE W/FLANGE OUTLET

Nominal Pipe Size		Letter Code	Pipe OD Range		BY	Branch Size		Stainless Steel Flange		Carbon Steel Flange	
Inches	MM		Inches	MM		Inches	MM	Part Number	List Price	Part Number	List Price
8	200	A	7.90-8.30	201-211	X	2	50	348008A020AS	\$ 1,160.80	348008A020CS	\$ 1,101.60
		B	8.60-9.05	218-230				348008B020AS		348008B020CS	
		C	9.05-9.45	230-240				348008C020AS		348008C020CS	
		D	9.20-9.60	234-244				348008D020AS		348008D020CS	
8	200	A	7.90-8.30	201-211	X	3	80	348008A030AS	\$ 1,172.70	348008A030CS	\$ 1,113.40
		B	8.60-9.05	218-230				348008B030AS		348008B030CS	
		C	9.05-9.45	230-240				348008C030AS		348008C030CS	
		D	9.20-9.60	234-244				348008D030AS		348008D030CS	
8	200	A	7.90-8.30	201-211	X	4	100	348008A040AS	\$ 1,178.60	348008A040CS	\$ 1,125.30
		B	8.60-9.05	218-230				348008B040AS		348008B040CS	
		C	9.05-9.45	230-240				348008C040AS		348008C040CS	
		D	9.20-9.60	234-244				348008D040AS		348008D040CS	
8	200	A	7.90-8.30	201-211	X	6	150	348008A060AS	\$ 1,304.20	348008A060CS	\$ 1,251.50
		B	8.60-9.05	218-230				348008B060AS		348008B060CS	
		C	9.05-9.45	230-240				348008C060AS		348008C060CS	
		D	9.20-9.60	234-244				348008D060AS		348008D060CS	
8	200	B	8.60-9.05	218-230	X	8	200	348008B080AS	\$ 1,628.50	348008B080CS	\$ 1,554.90
		C	9.05-9.45	230-240				348008C080AS		348008C080CS	
		D	9.20-9.60	234-244				348008D080AS		348008D080CS	
10	250	A	9.90-10.30	251-262	X	2	50	348010A020AS	\$ 1,260.60	348010A020CS	\$ 1,196.30
		B	10.70-11.10	272-282				348010B020AS		348010B020CS	
		C	11.10-11.50	282-292				348010C020AS		348010C020CS	
		D	11.40-11.80	290-300				348010D020AS		348010D020CS	
		E	11.80-12.20	300-310				348010E020AS		348010E020CS	
10	250	A	9.90-10.30	251-262	X	3	80	348010A030AS	\$ 1,273.50	348010A030CS	\$ 1,209.20
		B	10.70-11.10	272-282				348010B030AS		348010B030CS	
		C	11.10-11.50	282-292				348010C030AS		348010C030CS	
		D	11.40-11.80	290-300				348010D030AS		348010D030CS	
		E	11.80-12.20	300-310				348010E030AS		348010E030CS	
10	250	A	9.90-10.30	251-262	X	4	100	348010A040AS	\$ 1,279.90	348010A040CS	\$ 1,222.00
		B	10.70-11.10	272-282				348010B040AS		348010B040CS	
		C	11.10-11.50	282-292				348010C040AS		348010C040CS	
		D	11.40-11.80	290-300				348010D040AS		348010D040CS	
		E	11.80-12.20	300-310				348010E040AS		348010E040CS	
10	250	A	9.90-10.30	251-262	X	6	150	348010A060AS	\$ 1,390.10	348010A060CS	\$ 1,327.30
		B	10.70-11.10	272-282				348010B060AS		348010B060CS	
		C	11.10-11.50	282-292				348010C060AS		348010C060CS	
		D	11.40-11.80	290-300				348010D060AS		348010D060CS	
		E	11.80-12.20	300-310				348010E060AS		348010E060CS	
10	250	A	9.90-10.30	251-262	X	8	200	348010A080AS	\$ 1,762.70	348010A080CS	\$ 1,683.00
		B	10.70-11.10	272-282				348010B080AS		348010B080CS	
		C	11.10-11.50	282-292				348010C080AS		348010C080CS	
		D	11.40-11.80	290-300				348010D080AS		348010D080CS	
		E	11.80-12.20	300-310				348010E080AS		348010E080CS	

3480AS / 3480CS TAP SLEEVE W/FLANGE OUTLET

Nominal Pipe Size		Letter Code	Pipe OD Range		BY	Branch Size		Stainless Steel Flange		Carbon Steel Flange	
Inches	MM		Inches	MM		Inches	MM	Part Number	List Price	Part Number	List Price
10	250	B	10.70-11.10	272-282	X	10	250	348010B100AS	\$ 2,920.90	348010B100CS	\$ 2,788.80
		C	11.10-11.50	282-292				348010C100AS		348010C100CS	
		D	11.40-11.80	290-300				348010D100AS		348010D100CS	
		E	11.80-12.20	300-310				348010E100AS		348010E100CS	
12	300	A	11.90-12.30	302-312	X	2	50	348012A020AS	\$ 1,491.50	348012A020CS	\$ 1,415.40
		B	12.50-12.90	318-328				348012B020AS		348012B020CS	
		C	13.20-13.60	335-345				348012C020AS		348012C020CS	
		D	13.40-13.80	340-351				348012D020AS		348012D020CS	
		E	13.90-14.30	355-363				348012E020AS		348012E020CS	
12	300	A	11.90-12.30	302-312	X	3	80	348012A030AS	\$ 1,506.70	348012A030CS	\$ 1,430.60
		B	12.50-12.90	318-328				348012B030AS		348012B030CS	
		C	13.20-13.60	335-345				348012C030AS		348012C030CS	
		D	13.40-13.80	340-351				348012D030AS		348012D030CS	
		E	13.90-14.30	355-363				348012E030AS		348012E030CS	
12	300	A	11.90-12.30	302-312	X	4	100	348012A040AS	\$ 1,514.30	348012A040CS	\$ 1,445.80
		B	12.50-12.90	318-328				348012B040AS		348012B040CS	
		C	13.20-13.60	335-345				348012C040AS		348012C040CS	
		D	13.40-13.80	340-351				348012D040AS		348012D040CS	
		E	13.90-14.30	355-363				348012E040AS		348012E040CS	
12	300	A	11.90-12.30	302-312	X	6	150	348012A060AS	\$ 1,666.10	348012A060CS	\$ 1,590.70
		B	12.50-12.90	318-328				348012B060AS		348012B060CS	
		C	13.20-13.60	335-345				348012C060AS		348012C060CS	
		D	13.40-13.80	340-351				348012D060AS		348012D060CS	
		E	13.90-14.30	355-363				348012E060AS		348012E060CS	
12	300	A	11.90-12.30	302-312	X	8	200	348012A080AS	\$ 2,014.50	348012A080CS	\$ 1,923.40
		B	12.50-12.90	318-328				348012B080AS		348012B080CS	
		C	13.20-13.60	335-345				348012C080AS		348012C080CS	
		D	13.40-13.80	340-351				348012D080AS		348012D080CS	
		E	13.90-14.30	355-363				348012E080AS		348012E080CS	
12	300	A	11.90-12.30	302-312	X	10	250	348012A100AS	\$ 3,172.80	348012A100CS	\$ 3,029.30
		B	12.50-12.90	318-328				348012B100AS		348012B100CS	
		C	13.20-13.60	335-345				348012C100AS		348012C100CS	
		D	13.40-13.80	340-351				348012D100AS		348012D100CS	
		E	13.90-14.30	355-363				348012E100AS		348012E100CS	
12	300	B	12.50-12.90	318-328	X	12	300	348012B120AS	\$ 3,779.80	348012B120CS	\$ 3,608.80
		C	13.20-13.60	335-345				348012C120AS		348012C120CS	
		D	13.40-13.80	340-351				348012D120AS		348012D120CS	
		E	13.90-14.30	355-363				348012E120AS		348012E120CS	
14	350	A	15.00-15.40	381-391	X	2	50	348014A020AS	\$ 2,066.10	348014A020CS	\$ 1,960.70
		B	15.30-15.70	389-399				348014B020AS		348014B020CS	
		C	15.90-16.30	404-414				348014C020AS		348014C020CS	
		D	16.40-16.80	417-427				348014D020AS		348014D020CS	

3480AS / 3480CS TAP SLEEVE W/FLANGE OUTLET

Nominal Pipe Size		Letter Code	Pipe OD Range		BY	Branch Size		Stainless Steel Flange		Carbon Steel Flange	
Inches	MM		Inches	MM		Inches	MM	Part Number	List Price	Part Number	List Price
14	350	A	15.00-15.40	381-391	X	3	80	348014A030AS	\$ 2,087.20	348014A030CS	\$ 1,981.80
		B	15.30-15.70	389-399				348014B030AS		348014B030CS	
		C	15.90-16.30	404-414				348014C030AS		348014C030CS	
		D	16.40-16.80	417-427				348014D030AS		348014D030CS	
14	350	A	15.00-15.40	381-391	X	4	100	348014A040AS	\$ 2,097.70	348014A040CS	\$ 2,002.90
		B	15.30-15.70	389-399				348014B040AS		348014B040CS	
		C	15.90-16.30	404-414				348014C040AS		348014C040CS	
		D	16.40-16.80	417-427				348014D040AS		348014D040CS	
14	350	A	15.00-15.40	381-391	X	6	150	348014A060AS	\$ 2,300.00	348014A060CS	\$ 2,196.00
		B	15.30-15.70	389-399				348014B060AS		348014B060CS	
		C	15.90-16.30	404-414				348014C060AS		348014C060CS	
		D	16.40-16.80	417-427				348014D060AS		348014D060CS	
14	350	A	15.00-15.40	381-391	X	8	200	348014A080AS	\$ 3,022.90	348014A080CS	\$ 2,886.20
		B	15.30-15.70	389-399				348014B080AS		348014B080CS	
		C	15.90-16.30	404-414				348014C080AS		348014C080CS	
		D	16.40-16.80	417-427				348014D080AS		348014D080CS	
14	350	A	15.00-15.40	381-391	X	10	250	348014A100AS	\$ 4,091.60	348014A100CS	\$ 3,906.60
		B	15.30-15.70	389-399				348014B100AS		348014B100CS	
		C	15.90-16.30	404-414				348014C100AS		348014C100CS	
		D	16.40-16.80	417-427				348014D100AS		348014D100CS	
14	350	A	15.00-15.40	381-391	X	12	300	348014A120AS	\$ 4,846.40	348014A120CS	\$ 4,627.20
		B	15.30-15.70	389-399				348012B120AS		348014B120CS	
		C	15.90-16.30	404-414				348014C120AS		348014C120CS	
		D	16.40-16.80	417-427				348014D120AS		348014D120CS	
16	400	A	17.00-17.40	432-442	X	2	50	348016A020AS	\$ 2,407.80	348016A020CS	\$ 2,264.50
		B	17.40-17.80	442-452				348016B020AS		348016B020CS	
		C	17.70-18.10	450-460				348016C020AS		348016C020CS	
16	400	A	17.00-17.40	432-442	X	3	80	348016A030AS	\$ 2,412.80	348016A030CS	\$ 2,288.90
		B	17.40-17.80	442-452				348016B030AS		348016B030CS	
		C	17.70-18.10	450-460				348016C030AS		348016C030CS	
16	400	A	17.00-17.40	432-442	X	4	100	348016A040AS	\$ 2,422.80	348016A040CS	\$ 2,313.20
		B	17.40-17.80	442-452				348016B040AS		348016B040CS	
		C	17.70-18.10	450-460				348016C040AS		348016C040CS	
16	400	A	17.00-17.40	432-442	X	6	150	348016A060AS	\$ 2,625.00	348016A060CS	\$ 2,506.30
		B	17.40-17.80	442-452				348016B060AS		348016B060CS	
		C	17.70-18.10	450-460				348016C060AS		348016C060CS	
16	400	A	17.00-17.40	432-442	X	8	200	348016A080AS	\$ 3,126.60	348016A080CS	\$ 2,985.20
		B	17.40-17.80	442-452				348016B080AS		348016B080CS	
		C	17.70-18.10	450-460				348016C080AS		348016C080CS	
16	400	A	17.00-17.40	432-442	X	10	250	348016A100AS	\$ 4,341.50	348016A100CS	\$ 4,145.10
		B	17.40-17.80	442-452				348016B100AS		348016B100CS	
		C	17.70-18.10	450-460				348016C100AS		348016C100CS	

3480AS / 3480CS TAP SLEEVE W/FLANGE OUTLET

Nominal Pipe Size		Letter Code	Pipe OD Range		BY	Branch Size		Stainless Steel Flange		Carbon Steel Flange	
Inches	MM		Inches	MM		Inches	MM	Part Number	List Price	Part Number	List Price
16	400	A	17.00-17.40	432-442	X	12	300	348016A120AS	\$ 4,977.90	348016A120CS	\$ 4,752.80
		B	17.40-17.80	442-452				348016B120AS		348016B120CS	
		C	17.70-18.10	450-460				348016C120AS		348016C120CS	
18	450	A	18.40-18.80	467-478	X	2	50	348018A020AS	\$ 2,435.90	348018A020CS	\$ 2,311.60
		B	18.60-19.00	472-483				348018B020AS		348018B020CS	
		C	19.30-19.70	490-500				348018C020AS		348018C020CS	
		D	19.80-20.20	503-513				348018D020AS		348018D020CS	
18	450	A	18.40-18.80	467-478	X	3	80	348018A030AS	\$ 2,460.70	348018A030CS	\$ 2,336.40
		B	18.60-19.00	472-483				348018B030AS		348018B030CS	
		C	19.30-19.70	490-500				348008C030AS		348018C030CS	
		D	19.80-20.20	503-513				348018D030AS		348018D030CS	
18	450	A	18.40-18.80	467-478	X	4	100	348018A040AS	\$ 2,473.20	348018A040CS	\$ 2,361.30
		B	18.60-19.00	472-483				348018B040AS		348018B040CS	
		C	19.30-19.70	490-500				348018C040AS		348018C040CS	
		D	19.80-20.20	503-513				348018D040AS		348018D040CS	
18	450	A	18.40-18.80	467-478	X	6	150	348018A060AS	\$ 2,675.90	348018A060CS	\$ 2,554.80
		B	18.60-19.00	472-483				348018B060AS		348018B060CS	
		C	19.30-19.70	490-500				348018C060AS		348018C060CS	
		D	19.80-20.20	503-513				348018D060AS		348018D060CS	
18	450	A	18.40-18.80	467-478	X	8	200	348018A080AS	\$ 3,217.40	348018A080CS	\$ 3,071.90
		B	18.60-19.00	472-483				348018B080AS		348018B080CS	
		C	19.30-19.70	490-500				348018C080AS		348018C080CS	
		D	19.80-20.20	503-513				348018D080AS		348018D080CS	
18	450	A	18.40-18.80	467-478	X	10	250	348018A100AS	\$ 4,446.00	348018A100CS	\$ 4,244.90
		B	18.60-19.00	472-483				348018B100AS		348018B100CS	
		C	19.30-19.70	490-500				348018C100AS		348018C100CS	
		D	19.80-20.20	503-513				348018D100AS		348018D100CS	
18	400	A	18.40-18.80	467-478	X	12	300	348018A120AS	\$ 5,082.50	348018A120CS	\$ 4,852.60
		B	18.60-19.00	472-483				348018B120AS		348018B120CS	
		C	19.30-19.70	490-500				348018C120AS		348018C120CS	
		D	19.80-20.20	503-513				348018D120AS		348018D120CS	
20	500	A	21.40-21.80	544-554	X	2	50	348020A020AS	\$ 2,794.40	348020A020CS	\$ 2,651.80
		B	21.90-22.30	556-566				348020B020AS		348020B020CS	
20	500	A	21.40-21.80	544-554	X	3	80	348020A030AS	\$ 2,822.90	348020A030CS	\$ 2,680.30
		B	21.90-22.30	556-566				348020B030AS		348020B030CS	
20	500	A	21.40-21.80	544-554	X	4	100	348020A040AS	\$ 2,837.20	348020A040CS	\$ 2,708.90
		B	21.90-22.30	556-566				348020B040AS		348020B040CS	
20	500	A	21.40-21.80	544-554	X	6	150	348020A060AS	\$ 3,039.50	348020A060CS	\$ 2,902.00
		B	21.90-22.30	556-566				348020B060AS		348020B060CS	
20	500	A	21.40-21.80	544-554	X	8	200	348020A080AS	\$ 3,714.60	348020A080CS	\$ 3,546.60
		B	21.90-22.30	556-566				348020B080AS		348020B080CS	

3480AS / 3480CS TAP SLEEVE W/FLANGE OUTLET

Nominal Pipe Size		Letter Code	Pipe OD Range		BY	Branch Size		Stainless Steel Flange		Carbon Steel Flange	
Inches	MM		Inches	MM		Inches	MM	Part Number	List Price	Part Number	List Price
20	500	A	21.40-21.80	544-554	X	10	250	348020A100AS	\$ 5,028.60	348020A100CS	\$ 4,801.10
		B	21.90-22.30	556-566				348020B100AS		348020B100CS	
20	500	A	21.40-21.80	544-554	X	12	300	348020A120AS	\$ 5,665.00	348020A120CS	\$ 5,408.80
		B	21.90-22.30	556-566				348020B120AS		348020B120CS	
24	600	A	25.60-26.00	650-660	X	2	50	348024A020AS	\$ 2,928.70	348024A020CS	\$ 2,779.30
		B	26.20-26.60	665-676				348024B020AS		348024B020CS	
24	600	A	25.60-26.00	650-660	X	3	80	348024A030AS	\$ 2,958.70	348024A030CS	\$ 2,809.20
		B	26.20-26.60	665-676				348024B030AS		348024B030CS	
24	600	A	25.60-26.00	650-660	X	4	100	348024A040AS	\$ 2,973.50	348024A040CS	\$ 2,839.00
		B	26.20-26.60	665-676				348024B040AS		348024B040CS	
24	600	A	25.60-26.00	650-660	X	6	150	348024A060AS	\$ 3,175.70	348024A060CS	\$ 3,032.10
		B	26.20-26.60	665-676				348024B060AS		348024B060CS	
24	600	A	25.60-26.00	650-660	X	8	200	348024A080AS	\$ 3,865.60	348024A080CS	\$ 3,690.80
		B	26.20-26.60	665-676				348024B080AS		348024B080CS	
24	600	A	25.60-26.00	650-660	X	10	250	348024A100AS	\$ 5,194.00	348024A100CS	\$ 4,959.00
		B	26.20-26.60	665-676				348024B100AS		348024B100CS	
24	600	A	25.60-26.00	650-660	X	12	300	348024A120AS	\$ 5,835.00	348024A120CS	\$ 5,571.10
		B	26.20-26.60	665-676				348024B120AS		348024B120CS	

CUSTOM SIZES AVAILABLE.

HOW TO ORDER: Choose the Pipe Size Letter Code corresponding to a Pipe OD Range that covers the Pipe OD to be tapped and then specify the desired branch size. EXAMPLE: 12" C900 PVC O.D. 13.20 with 6 inch Branch. Order 3480AS Carbon Steel Flange 12C x 6. **Part Number:** 348012C060CS

For Outlet Sizes 14" and above the tapping valve being used must be advised to PowerSeal in order to guarantee proper alignment recess mating.



COATING OPTION: Anti-Seizing/Galling protection. Available for both Alloy and SST application. Inquire with sales for cost and availability

3480MJ / 3480MJ-CS TAP SLEEVE W/MECHANICAL JOINT OUTLET

MJ OUTLET: Type 304 (18-8) Stainless Steel per ASTM A743 and ANSI/AWWA C111 or Carbon Steel. Solid One-Piece casting.

PANEL: Type 304 (18-8) Stainless Steel per ASTM A240.

SHELL GASKET: SBR Chek-O-Seal with multi o-ring sealing ribs from 100% new rubber to ensure performance under varying pressures with superior storage characteristics. Suitable for mild acids, water and salt media with a temperature range of -25°F to +200°F per ASTM D2000. Other materials available.

BRANCH GASKET: NBR per ASTM D2000 with Hydro TwinSeal® dual o-ring design incorporating both hydrostatic and mechanical forces to affect a dynamic seal.

BOLTS & NUTS: Type 304 (18-8) Stainless Steel per ASTM A193 and A194. **NOTE:** Hex nuts are furnished with fusion bonded coating to prevent seizing and galling.

WASHERS: Delrin per ASTM D6778.



Nominal Pipe Size		Letter Code	Pipe OD Range		BY	Branch Size		Stainless Steel MJ		Carbon Steel MJ	
Inches	MM		Inches	MM		Inches	MM	Part Number	List Price	Part Number	List Price
4	100	A	4.50-4.70	114-119	X	2	50	348004A020MJ	\$ 1,195.30	348004A020MJ-CS	\$ 1,133.60
		B	4.70-4.90	119-124				348004B020MJ		348004B020MJ-CS	
		C	4.80-5.00	112-127				348004C020MJ		348004C020MJ-CS	
		D	5.10-5.30	130-135				348004D020MJ		348004D020MJ-CS	
		E	5.20-5.40	132-137				348004E020MJ		348004E020MJ-CS	
4	100	A	4.50-4.70	114-119	X	3	80	348004A030MJ	\$ 1,207.50	348004A030MJ-CS	\$ 1,145.80
		B	4.70-4.90	119-124				348004B030MJ		348004B030MJ-CS	
		C	4.80-5.00	112-127				348004C030MJ		348004C030MJ-CS	
		D	5.10-5.30	130-135				348004D030MJ		348004D030MJ-CS	
		E	5.20-5.40	132-137				348004E030MJ		348004E030MJ-CS	
4	100	A	4.50-4.70	114-119	X	4	100	348004A040MJ	\$ 1,213.60	348004A040MJ-CS	\$ 1,158.00
		B	4.70-4.90	119-124				348004B040MJ		348004B040MJ-CS	
		C	4.80-5.00	112-127				348004C040MJ		348004C040MJ-CS	
		D	5.10-5.30	130-135				348004D040MJ		348004D040MJ-CS	
		E	5.20-5.40	132-137				348004E040MJ		348004E040MJ-CS	
6	150	A	6.00-6.20	152-157	X	2	50	348006A020MJ	\$ 1,245.70	348006A020MJ-CS	\$ 1,182.20
		B	6.60-7.00	168-178				348006B020MJ		348006B020MJ-CS	
		C	6.90-7.30	175-185				348006C020MJ		348006C020MJ-CS	
		D	7.10-7.50	180-191				348006D020MJ		348006D020MJ-CS	
6	150	A	6.00-6.20	152-157	X	3	80	348006A030MJ	\$ 1,258.40	348006A030MJ-CS	\$ 1,194.90
		B	6.60-7.00	168-178				348006B030MJ		348006B030MJ-CS	
		C	6.90-7.30	175-185				348006C030MJ		348006C030MJ-CS	
		D	7.10-7.50	180-191				348006D030MJ		348006D030MJ-CS	
6	150	A	6.00-6.20	152-157	X	4	100	348006A040MJ	\$ 1,264.80	348006A040MJ-CS	\$ 1,207.60
		B	6.60-7.00	168-178				348006B040MJ		348006B040MJ-CS	
		C	6.90-7.30	175-185				348006C040MJ		348006C040MJ-CS	
		D	7.10-7.50	180-191				348006D040MJ		348006D040MJ-CS	

3480MJ / 3480MJ-CS TAP SLEEVE W/MECHANICAL JOINT OUTLET

Nominal Pipe Size		Letter Code	Pipe OD Range		BY	Branch Size		Stainless Steel MJ		Carbon Steel MJ	
Inches	MM		Inches	MM		Inches	MM	Part Number	List Price	Part Number	List Price
6	150	B	6.60-7.00	168-178	X	6	150	348006B060MJ	\$ 1,442.30	348006B060MJ-CS	\$ 1,377.20
		C	6.90-7.30	175-185				348006C060MJ		348006C060MJ-CS	
		D	7.10-7.50	180-191				348006D060MJ		348006D060MJ-CS	
8	200	A	7.90-8.30	201-211	X	2	50	348008A020MJ	\$ 1,289.80	348008A020MJ-CS	\$ 1,224.00
		B	8.60-9.05	218-230				348008B020MJ		348008B020MJ-CS	
		C	9.05-9.45	230-240				348008C020MJ		348008C020MJ-CS	
		D	9.20-9.60	234-244				348008D020MJ		348008D020MJ-CS	
8	200	A	7.90-8.30	201-211	X	3	80	348008A030MJ	\$ 1,303.00	348008A030MJ-CS	\$ 1,237.20
		B	8.60-9.05	218-230				348008B030MJ		348008B030MJ-CS	
		C	9.05-9.45	230-240				348008C030MJ		348008C030MJ-CS	
		D	9.20-9.60	234-244				348008D030MJ		348008D030MJ-CS	
8	200	A	7.90-8.30	201-211	X	4	100	348008A040MJ	\$ 1,309.60	348008A040MJ-CS	\$ 1,250.30
		B	8.60-9.05	218-230				348008B040MJ		348008B040MJ-CS	
		C	9.05-9.45	230-240				348008C040MJ		348008C040MJ-CS	
		D	9.20-9.60	234-244				348008D040MJ		348008D040MJ-CS	
8	200	A	7.90-8.30	201-211	X	6	150	348008A060MJ	\$ 1,449.10	348008A060MJ-CS	\$ 1,390.60
		B	8.60-9.05	218-230				348008B060MJ		348008B060MJ-CS	
		C	9.05-9.45	230-240				348008C060MJ		348008C060MJ-CS	
		D	9.20-9.60	234-244				348008D060MJ		348008D060MJ-CS	
8	200	B	8.60-9.05	218-230	X	8	200	348008B080MJ	\$ 1,809.50	348008B080MJ-CS	\$ 1,727.60
		C	9.05-9.45	230-240				348008C080MJ		348008C080MJ-CS	
		D	9.20-9.60	234-244				348008D080MJ		348008D080MJ-CS	
10	250	A	9.90-10.30	251-262	X	2	50	348010A020MJ	\$ 1,400.70	348010A020MJ-CS	\$ 1,329.20
		B	10.70-11.10	272-282				348010B020MJ		348010B020MJ-CS	
		C	11.10-11.50	282-292				348010C020MJ		348010C020MJ-CS	
		D	11.40-11.80	290-300				348010D020MJ		348010D020MJ-CS	
		E	11.80-12.20	300-310				348010E020MJ		348010E020MJ-CS	
10	250	A	9.90-10.30	251-262	X	3	80	348010A030MJ	\$ 1,415.00	348010A030MJ-CS	\$ 1,343.50
		B	10.70-11.10	272-282				348010B030MJ		348010B030MJ-CS	
		C	11.10-11.50	282-292				348010C030MJ		348010C030MJ-CS	
		D	11.40-11.80	290-300				348010D030MJ		348010D030MJ-CS	
		E	11.80-12.20	300-310				348010E030MJ		348010E030MJ-CS	
10	250	A	9.90-10.30	251-262	X	4	100	348010A040MJ	\$ 1,422.10	348010A040MJ-CS	\$ 1,357.80
		B	10.70-11.10	272-282				348010B040MJ		348010B040MJ-CS	
		C	11.10-11.50	282-292				348010C040MJ		348010C040MJ-CS	
		D	11.40-11.80	290-300				348010D040MJ		348010D040MJ-CS	
		E	11.80-12.20	300-310				348010E040MJ		348010E040MJ-CS	
10	250	A	9.90-10.30	251-262	X	6	150	348010A060MJ	\$ 1,544.60	348010A060MJ-CS	\$ 1,474.70
		B	10.70-11.10	272-282				348010B060MJ		348010B060MJ-CS	
		C	11.10-11.50	282-292				348010C060MJ		348010C060MJ-CS	
		D	11.40-11.80	290-300				348010D060MJ		348010D060MJ-CS	
		E	11.80-12.20	300-310				348010E060MJ		348010E060MJ-CS	

3480MJ / 3480MJ-CS TAP SLEEVE W/MECHANICAL JOINT OUTLET

Nominal Pipe Size		Letter Code	Pipe OD Range		BY	Branch Size		Stainless Steel MJ		Carbon Steel MJ	
Inches	MM		Inches	MM		Inches	MM	Part Number	List Price	Part Number	List Price
10	250	A	9.90-10.30	251-262	X	8	200	348010A080MJ	\$ 1,958.50	348010A080MJ-CS	\$ 1,870.00
		B	10.70-11.10	272-282				348010B080MJ		348010B080MJ-CS	
		C	11.10-11.50	282-292				348010C080MJ		348010C080MJ-CS	
		D	11.40-11.80	290-300				348010D080MJ		348010D080MJ-CS	
		E	11.80-12.20	300-310				348010E080MJ		348010E080MJ-CS	
10	250	B	10.70-11.10	272-282	X	10	250	348010B100MJ	\$ 3,245.40	348010B100MJ-CS	\$ 3,098.70
		C	11.10-11.50	282-292				348010C100MJ		348010C100MJ-CS	
		D	11.40-11.80	290-300				348010D100MJ		348010D100MJ-CS	
		E	11.80-12.20	300-310				348010E100MJ		348010E100MJ-CS	
12	300	A	11.90-12.30	302-312	X	2	50	348012A020MJ	\$ 1,277.20	348012A020MJ-CS	\$ 1,572.70
		B	12.50-12.90	318-328				348012B020MJ		348012B020MJ-CS	
		C	13.20-13.60	335-345				348012C020MJ		348012C020MJ-CS	
		D	13.40-13.80	340-351				348012D020MJ		348012D020MJ-CS	
		E	13.90-14.30	355-363				348012E020MJ		348012E020MJ-CS	
12	300	A	11.90-12.30	302-312	X	3	80	348012A030MJ	\$ 1,674.10	348012A030MJ-CS	\$ 1,589.60
		B	12.50-12.90	318-328				348012B030MJ		348012B030MJ-CS	
		C	13.20-13.60	335-345				348012C030MJ		348012C030MJ-CS	
		D	13.40-13.80	340-351				348012D030MJ		348012D030MJ-CS	
		E	13.90-14.30	355-363				348012E030MJ		348012E030MJ-CS	
12	300	A	11.90-12.30	302-312	X	4	100	348012A040MJ	\$ 1,682.60	348012A040MJ-CS	\$ 1,606.50
		B	12.50-12.90	318-328				348012B040MJ		348012B040MJ-CS	
		C	13.20-13.60	335-345				348012C040MJ		348012C040MJ-CS	
		D	13.40-13.80	340-351				348012D040MJ		348012D040MJ-CS	
		E	13.90-14.30	355-363				348012E040MJ		348012E040MJ-CS	
12	300	A	11.90-12.30	302-312	X	6	150	348012A060MJ	\$ 1,851.20	348012A060MJ-CS	\$ 1,767.50
		B	12.50-12.90	318-328				348012B060MJ		348012B060MJ-CS	
		C	13.20-13.60	335-345				348012C060MJ		348012C060MJ-CS	
		D	13.40-13.80	340-351				348012D060MJ		348012D060MJ-CS	
		E	13.90-14.30	355-363				348012E060MJ		348012E060MJ-CS	
12	300	A	11.90-12.30	302-312	X	8	200	348012A080MJ	\$ 2,238.30	348012A080MJ-CS	\$ 2,137.10
		B	12.50-12.90	318-328				348012B080MJ		348012B080MJ-CS	
		C	13.20-13.60	335-345				348012C080MJ		348012C080MJ-CS	
		D	13.40-13.80	340-351				348012D080MJ		348012D080MJ-CS	
		E	13.90-14.30	355-363				348012E080MJ		348012E080MJ-CS	
12	300	A	11.90-12.30	302-312	X	10	250	348012A100MJ	\$ 3,525.40	348012A100MJ-CS	\$ 3,365.90
		B	12.50-12.90	318-328				348012B100MJ		348012B100MJ-CS	
		C	13.20-13.60	335-345				34802C100MJ		348012C100MJ-CS	
		D	13.40-13.80	340-351				348012D100MJ		348012D100MJ-CS	
		E	13.90-14.30	355-363				348012E100MJ		348012E100MJ-CS	
12	300	B	12.50-12.90	318-328	X	12	300	348012B120MJ	\$ 4,199.80	348012B120MJ-CS	\$ 4,009.80
		C	13.20-13.60	335-345				348012C120MJ		348012C120MJ-CS	
		D	13.40-13.80	340-351				348012D120MJ		348012D120MJ-CS	
		E	13.90-14.30	355-363				348012E120MJ		348012E120MJ-CS	

3480MJ / 3480MJ-CS TAP SLEEVE W/MECHANICAL JOINT OUTLET

Nominal Pipe Size		Letter Code	Pipe OD Range		BY	Branch Size		Stainless Steel MJ		Carbon Steel MJ	
Inches	MM		Inches	MM		Inches	MM	Part Number	List Price	Part Number	List Price
14	350	A	15.00-15.40	381-391	X	2	50	348014A020MJ	\$ 2,295.70	348014A020MJ-CS	\$ 2,178.60
		B	15.30-15.70	389-399				348014B020MJ		348014B020MJ-CS	
		C	15.90-16.30	404-414				348014C020MJ		348014C020MJ-CS	
		D	16.40-16.80	417-427				348014D020MJ		348014D020MJ-CS	
14	350	A	15.00-15.40	381-391	X	3	80	348014A030MJ	\$ 2,319.10	348014A030MJ-CS	\$ 2,202.00
		B	15.30-15.70	389-399				348014B030MJ		348014B030MJ-CS	
		C	15.90-16.30	404-414				348014C030MJ		348014C030MJ-CS	
		D	16.40-16.80	417-427				348014D030MJ		348014D030MJ-CS	
14	350	A	15.00-15.40	381-391	X	4	100	348014A040MJ	\$ 2,330.80	348014A040MJ-CS	\$ 2,225.40
		B	15.30-15.70	389-399				348014B040MJ		348014B040MJ-CS	
		C	15.90-16.30	404-414				348014C040MJ		348014C040MJ-CS	
		D	16.40-16.80	417-427				348014D040MJ		348014D040MJ-CS	
14	350	A	15.00-15.40	381-391	X	6	150	348014A060MJ	\$ 2,555.50	348014A060MJ-CS	\$ 2,440.00
		B	15.30-15.70	389-399				348014B060MJ		348014B060MJ-CS	
		C	15.90-16.30	404-414				348014C060MJ		348014C060MJ-CS	
		D	16.40-16.80	417-427				348014D060MJ		348014D060MJ-CS	
14	350	A	15.00-15.40	381-391	X	8	200	348014A080MJ	\$ 3,358.80	348014A080MJ-CS	\$ 3,206.90
		B	15.30-15.70	389-399				348014B080MJ		348014B080MJ-CS	
		C	15.90-16.30	404-414				348014C080MJ		348014C080MJ-CS	
		D	16.40-16.80	417-427				348014D080MJ		348014D080MJ-CS	
14	350	A	15.00-15.40	381-391	X	10	250	348014A100MJ	\$ 4,546.30	348014A100MJ-CS	\$ 4,340.70
		B	15.30-15.70	389-399				348014B100MJ		348014B100MJ-CS	
		C	15.90-16.30	404-414				348014C100MJ		348014C100MJ-CS	
		D	16.40-16.80	417-427				348014D100MJ		348014D100MJ-CS	
14	350	A	15.00-15.40	381-391	X	12	300	348014A120MJ	\$ 5,384.90	348014A120MJ-CS	\$ 5,141.30
		B	15.30-15.70	389-399				348014B120MJ		348014B120MJ-CS	
		C	15.90-16.30	404-414				348014C120MJ		348014C120MJ-CS	
		D	16.40-16.80	417-427				348014D120MJ		348014D120MJ-CS	
16	400	A	17.00-17.40	432-442	X	2	50	348016A020MJ	\$ 2,651.40	348016A020MJ-CS	\$ 2,516.10
		B	17.40-17.80	442-452				348016B020MJ		348016B020MJ-CS	
		C	17.70-18.10	450-460				348016C020MJ		348016C020MJ-CS	
16	400	A	17.00-17.40	432-442	X	3	80	348016A030MJ	\$ 2,678.40	348016A030MJ-CS	\$ 2,543.20
		B	17.40-17.80	442-452				348016B030MJ		348016B030MJ-CS	
		C	17.70-18.10	450-460				348016C030MJ		348016C030MJ-CS	
16	400	A	17.00-17.40	432-442	X	4	100	348016A040MJ	\$ 2,916.60	348016A040MJ-CS	\$ 2,570.20
		B	17.40-17.80	442-452				348016B040MJ		348016B040MJ-CS	
		C	17.70-18.10	450-460				348016C040MJ		348016C040MJ-CS	
16	400	A	17.00-17.40	432-442	X	6	150	348016A060MJ	\$ 3,474.00	348016A060MJ-CS	\$ 2,784.70
		B	17.40-17.80	442-452				348016B060MJ		348016B060MJ-CS	
		C	17.70-18.10	450-460				348016C060MJ		348016C060MJ-CS	
16	400	A	17.00-17.40	432-442	X	8	200	348016A080MJ	\$ 4,823.90	348016A080MJ-CS	\$ 3,316.80
		B	17.40-17.80	442-452				348016B080MJ		348016B080MJ-CS	
		C	17.70-18.10	450-460				348016C080MJ		348016C080MJ-CS	

3480MJ / 3480MJ-CS TAP SLEEVE W/MECHANICAL JOINT OUTLET

Nominal Pipe Size		Letter Code	Pipe OD Range		BY	Branch Size		Stainless Steel MJ		Carbon Steel MJ	
Inches	MM		Inches	MM		Inches	MM	Part Number	List Price	Part Number	List Price
16	400	A	17.00-17.40	432-442	X	10	250	348016A100MJ	\$ 4,824.00	348016A100MJ-CS	\$ 4,605.70
		B	17.40-17.80	442-452				348016B100MJ		348016B100MJ-CS	
		C	17.70-18.10	450-460				348016C100MJ		348016C100MJ-CS	
16	400	A	17.00-17.40	432-442	X	12	300	348016A120MJ	\$ 5,531.00	348016A120MJ-CS	\$ 5,280.90
		B	17.40-17.80	442-452				348016B120MJ		348016B120MJ-CS	
		C	17.70-18.10	450-460				348016C120MJ		348016C120MJ-CS	
18	450	A	18.40-18.80	467-478	X	2	50	348018A020MJ	\$ 2,706.50	348018A020MJ-CS	\$ 2,568.40
		B	18.60-19.00	472-483				348018B020MJ		348018B020MJ-CS	
		C	19.30-19.70	490-500				348018C020MJ		348018C020MJ-CS	
		D	19.80-20.20	503-513				348018D020MJ		348018D020MJ-CS	
18	450	A	18.40-18.80	467-478	X	3	80	348018A030MJ	\$ 2,734.10	348018A030MJ-CS	\$ 2,596.00
		B	18.60-19.00	472-483				348018B030MJ		348018B030MJ-CS	
		C	19.30-19.70	490-500				348018C030MJ		348018C030MJ-CS	
		D	19.80-20.20	503-513				348018D030MJ		348018D030MJ-CS	
18	450	A	18.40-18.80	467-478	X	4	100	348018A040MJ	\$ 2,748.00	348018A040MJ-CS	\$ 2,623.70
		B	18.60-19.00	472-483				348018B040MJ		348018B040MJ-CS	
		C	19.30-19.70	490-500				348018C040MJ		348018C040MJ-CS	
		D	19.80-20.20	503-513				348018D040MJ		348018D040MJ-CS	
18	450	A	18.40-18.80	467-478	X	6	150	348018A060MJ	\$ 2,973.20	348018A060MJ-CS	\$ 2,838.70
		B	18.60-19.00	472-483				348018B060MJ		348018B060MJ-CS	
		C	19.30-19.70	490-500				348018C060MJ		348018C060MJ-CS	
		D	19.80-20.20	503-513				348018D060MJ		348018D060MJ-CS	
18	450	A	18.40-18.80	467-478	X	8	200	348018A080MJ	\$ 3,574.90	348018A080MJ-CS	\$ 3,413.20
		B	18.60-19.00	472-483				348018B080MJ		348018B080MJ-CS	
		C	19.30-19.70	490-500				348018C080MJ		348018C080MJ-CS	
		D	19.80-20.20	503-513				348018D080MJ		348018D080MJ-CS	
18	450	A	18.40-18.80	467-478	X	10	250	348018A100MJ	\$ 4,940.00	348018A100MJ-CS	\$ 4,716.60
		B	18.60-19.00	472-483				348018B100MJ		348018B100MJ-CS	
		C	19.30-19.70	490-500				348018C100MJ		348018C100MJ-CS	
		D	19.80-20.20	503-513				348018D100MJ		348018D100MJ-CS	
18	400	A	18.40-18.80	467-478	X	12	300	348018A120MJ	\$ 5,647.20	348018A120MJ-CS	\$ 5,391.80
		B	18.60-19.00	472-483				348018B120MJ		348018B120MJ-CS	
		C	19.30-19.70	490-500				348018C120MJ		348018C120MJ-CS	
		D	19.80-20.20	503-513				348018D120MJ		348018D120MJ-CS	
20	500	A	21.40-21.80	544-554	X	2	50	348020A020MJ	\$ 3,104.90	348020A020MJ-CS	\$ 2,946.50
		B	21.90-22.30	556-566				348020B020MJ		348020B020MJ-CS	
20	500	A	21.40-21.80	544-554	X	3	80	348020A030MJ	\$ 3,136.60	348020A030MJ-CS	\$ 2,978.20
		B	21.90-22.30	556-566				348020B030MJ		348020B030MJ-CS	
20	500	A	21.40-21.80	544-554	X	4	100	348020A040MJ	\$ 3,152.40	348020A040MJ-CS	\$ 3,009.80
		B	21.90-22.30	556-566				348020B040MJ		348020B040MJ-CS	
20	500	A	21.40-21.80	544-554	X	6	150	348020A060MJ	\$ 3,377.20	348020A060MJ-CS	\$ 3,224.50
		B	21.90-22.30	556-566				348020B060MJ		348020B060MJ-CS	

3480MJ / 3480MJ-CS TAP SLEEVE W/MECHANICAL JOINT OUTLET

Nominal Pipe Size		Letter Code	Pipe OD Range		BY	Branch Size		Stainless Steel MJ		Carbon Steel MJ	
Inches	MM		Inches	MM		Inches	MM	Part Number	List Price	Part Number	List Price
20	500	A	21.40-21.80	544-554	X	8	200	348020A080MJ	\$ 4,127.30	348020A080MJ-CS	\$ 3,940.60
		B	21.90-22.30	556-566				348020B080MJ		348020B080MJ-CS	
20	500	A	21.40-21.80	544-554	X	10	250	348020A100MJ	\$ 5,587.30	348020A100MJ-CS	\$ 5,334.60
		B	21.90-22.30	556-566				348020B100MJ		348020B100MJ-CS	
20	500	A	21.40-21.80	544-554	X	12	300	348020A120MJ	\$ 6,294.40	348020A120MJ-CS	\$ 6,009.70
		B	21.90-22.30	556-566				348020B120MJ		348020B120MJ-CS	
24	600	A	25.60-26.00	650-660	X	2	50	384024A020MJ	\$ 3,254.10	348024A020MJ-CS	\$ 3,088.10
		B	26.20-26.60	665-676				348024B020MJ		348024B020MJ-CS	
24	600	A	25.60-26.00	650-660	X	3	80	348024A030MJ	\$ 3,287.30	348024A030MJ-CS	\$ 3,121.30
		B	26.20-26.60	665-676				348024B030MJ		348024B030MJ-CS	
24	600	A	25.60-26.00	650-660	X	4	100	348024A040MJ	\$ 3,304.00	348024A040MJ-CS	\$ 3,154.50
		B	26.20-26.60	665-676				348024B040MJ		348024B040MJ-CS	
24	600	A	25.60-26.00	650-660	X	6	150	348024A060MJ	\$ 3,528.60	348024A060MJ-CS	\$ 3,369.00
		B	26.20-26.60	665-676				348024B060MJ		348024B060MJ-CS	
24	600	A	25.60-26.00	650-660	X	8	200	348024A080MJ	\$ 4,295.00	348024A080MJ-CS	\$ 4,100.80
		B	26.20-26.60	665-676				348024B080MJ		348024B080MJ-CS	
24	600	A	25.60-26.00	650-660	X	10	250	348024A100MJ	\$ 5,771.00	348024A100MJ-CS	\$ 5,510.00
		B	26.20-26.60	665-676				348024B100MJ		348024B100MJ-CS	
24	600	A	25.60-26.00	650-660	X	12	300	348024A120MJ	\$ 6,483.30	348024A120MJ-CS	\$ 6,190.10
		B	26.20-26.60	665-676				348024B120MJ		348024B120MJ-CS	

CUSTOM SIZES AVAILABLE.

HOW TO ORDER: Choose the Pipe Size Letter Code corresponding to a Pipe OD Range that covers the Pipe OD to be tapped and then specify the desired branch size. EXAMPLE: 8" C900 PVC O.D. 9.05 with 6 inch Stainless Steel MJ Branch. Order 3480MJ -8C x 6. **Part Number:** 348008C060MJ .

For Outlet Sizes 14" and above the tapping valve being used must be advised to PowerSeal in order to guarantee proper alignment recess mating.

*Manufactured under U.S. Patent 6,330,771.

3490AS / 3490CS TAP SLEEVE W/FLANGE OUTLET

FLANGE: Type 304 (18-8) Stainless Steel per ASTM A743 and ANSI/AWWA C111 or Carbon Steel.

PANEL: Type 304 (18-8) Stainless Steel per ASTM A240.

SHELL GASKET: SBR Chek-O-Seal with multi o-ring sealing ribs from 100% new rubber to ensure performance under varying pressures with superior storage characteristics. Suitable for mild acids, water and salt media with a temperature range of -25°F to +200°F per ASTM D2000. Other materials available.

BRANCH GASKET: NBR per ASTM D2000 with Hydro TwinSeal® dual o-ring design incorporating both hydrostatic and mechanical forces to affect a dynamic seal.

BOLTS & NUTS: Type 304 (18-8) Stainless Steel per ASTM A193 and A194 for sleeves with Stainless Steel Flange and Low Alloy Steel Bolts and Nuts per ASTM A325 and ASTM A563 for sleeves with Carbon Steel Flange. **NOTE:** Stainless Steel hex nuts are furnished with fusion bonded coating to prevent seizing and galling.

WASHERS: Delrin per ASTM D6778.



Nominal Pipe Size		Letter Code	Pipe OD Range		BY	Branch Size		Stainless Steel Flange with Stainless steel bolts and nuts		Carbon Steel Flange with alloy steel bolts and nuts	
Inches	MM		Inches	MM		Inches	MM	Part Number	List Price	Part Number	List Price
4	100	A	4.50-4.70	114-119	X	2	50	349004A020AS	\$ 1,236.80	349004A020CS	\$ 861.40
		B	4.70-4.90	119-124				349004B020AS		349004B020CS	
		C	4.80-5.00	112-127				349004C020AS		349004C020CS	
		D	5.10-5.30	130-135				349004D020AS		349004D020CS	
		E	5.20-5.40	132-137				349004E020AS		349004E020CS	
4	100	A	4.50-4.70	114-119	X	3	80	349004A030AS	\$ 1,249.50	349004A030CS	\$ 870.20
		B	4.70-4.90	119-124				349004B030AS		349004B030CS	
		C	4.80-5.00	112-127				349004C030AS		349004C030CS	
		D	5.10-5.30	130-135				349004D030AS		349004D030CS	
		E	5.20-5.40	132-137				349004E030AS		349004E030CS	
4	100	A	4.50-4.70	114-119	X	4	100	349004A040AS	\$ 1,268.60	349004A040CS	\$ 883.60
		B	4.70-4.90	119-124				349004B040AS		349004B040CS	
		C	4.80-5.00	112-127				349004C040AS		349004C040CS	
		D	5.10-5.30	130-135				349004D040AS		349004D040CS	
		E	5.20-5.40	132-137				349004E040AS		349004E040CS	
6	150	A	6.00-6.20	152-157	X	2	50	349006A020AS	\$ 1,248.40	349006A020CS	\$ 894.30
		B	6.60-7.00	168-178				349006B020AS		349006B020CS	
		C	6.90-7.30	175-185				349006C020AS		349006C020CS	
		D	7.10-7.50	180-191				349006D020AS		349006D020CS	
6	150	A	6.00-6.20	152-157	X	3	80	349006A030AS	\$ 1,261.30	349006A030CS	\$ 903.60
		B	6.60-7.00	168-178				349006B030AS		349006B030CS	
		C	6.90-7.30	175-185				349006C030AS		349006C030CS	
		D	7.10-7.50	180-191				349006D030AS		349006D030CS	
6	150	A	6.00-6.20	152-157	X	4	100	349006A040AS	\$ 1,280.60	349006A040CS	\$ 917.40
		B	6.60-7.00	168-178				349006B040AS		349006B040CS	
		C	6.90-7.30	175-185				349006C040AS		349006C040CS	
		D	7.10-7.50	180-191				349006D040AS		349006D040CS	
6	150	B	6.60-7.00	168-178	X	6	150	349006B060AS	\$ 1,320.40	349006B060CS	\$ 1,044.80
		C	6.90-7.30	175-185				349006C060AS		349006C060CS	
		D	7.10-7.50	180-191				349006D060AS		349006D060CS	

3490AS / 3490CS TAP SLEEVE W/FLANGE OUTLET

Nominal Pipe Size		Letter Code	Pipe OD Range		BY	Branch Size		Stainless Steel Flange with Stainless steel bolts and nuts		Carbon Steel Flange with alloy steel bolts and nuts	
Inches	MM		Inches	MM		Inches	MM	Part Number	List Price	Part Number	List Price
8	200	A	7.90-8.30	201-211	X	2	50	349008A020AS	\$ 1,303.70	349008A020CS	\$ 956.40
		B	8.60-9.05	218-230				349008B020AS		349008B020CS	
		C	9.05-9.45	230-240				349008C020AS		349008C020CS	
		D	9.20-9.60	234-244				349008D020AS		349008D020CS	
8	200	A	7.90-8.30	201-211	X	3	80	349008A030AS	\$ 1,317.10	349008A030CS	\$ 966.30
		B	8.60-9.05	218-230				349008B030AS		349008B030CS	
		C	9.05-9.45	230-240				349008C030AS		349008C030CS	
		D	9.20-9.60	234-244				349008D030AS		349008D030CS	
8	200	A	7.90-8.30	201-211	X	4	100	349008A040AS	\$ 1,337.30	349008A040CS	\$ 981.00
		B	8.60-9.05	218-230				349008B040AS		349008B040CS	
		C	9.05-9.45	230-240				349008C040AS		349008C040CS	
		D	9.20-9.60	234-244				349008D040AS		349008D040CS	
8	200	A	7.90-8.30	201-211	X	6	150	349008A060AS	\$ 1,444.70	349008A060CS	\$ 1,039.80
		B	8.60-9.05	218-230				349008B060AS		349008B060CS	
		C	9.05-9.45	230-240				349008C060AS		349008C060CS	
		D	9.20-9.60	234-244				349008D060AS		349008D060CS	
8	200	B	8.60-9.05	218-230	X	8	200	349008B080AS	\$ 1,773.00	349008B080CS	\$ 1,393.00
		C	9.05-9.45	230-240				349008C080AS		349008C080CS	
		D	9.20-9.60	234-244				349008D080AS		349008D080CS	
10	250	A	9.90-10.30	251-262	X	2	50	349010A020AS	\$ 1,487.00	349010A020CS	\$ 1,049.50
		B	10.70-11.10	272-282				349010B020AS		349010B020CS	
		C	11.10-11.50	282-292				349010C020AS		349010C020CS	
		D	11.40-11.80	290-300				349010D020AS		349010D020CS	
		E	11.80-12.20	300-310				349010E020AS		349010E020CS	
10	250	A	9.90-10.30	251-262	X	3	80	349010A030AS	\$ 1,502.30	349010A030CS	\$ 1,060.40
		B	10.70-11.10	272-282				349010B030AS		349010B030CS	
		C	11.10-11.50	282-292				349010C030AS		349010C030CS	
		D	11.40-11.80	290-300				349010D030AS		349010D030CS	
		E	11.80-12.20	300-310				349010E030AS		349010E030CS	
10	250	A	9.90-10.30	251-262	X	4	100	349010A040AS	\$ 1,525.30	349010A040CS	\$ 1,076.60
		B	10.70-11.10	272-282				349010B040AS		349010B040CS	
		C	11.10-11.50	282-292				349010C040AS		349010C040CS	
		D	11.40-11.80	290-300				349010D040AS		349010D040CS	
		E	11.80-12.20	300-310				349010E040AS		349010E040CS	
10	250	A	9.90-10.30	251-262	X	6	150	349010A060AS	\$ 1,652.70	349010A060CS	\$ 1,159.20
		B	10.70-11.10	272-282				349010B060AS		349010B060CS	
		C	11.10-11.50	282-292				349010C060AS		349010C060CS	
		D	11.40-11.80	290-300				349010D060AS		349010D060CS	
		E	11.80-12.20	300-310				349010E060AS		349010E060CS	
10	250	A	9.90-10.30	251-262	X	8	200	349010A080AS	\$ 2,018.90	349010A080CS	\$ 1,407.90
		B	10.70-11.10	272-282				349010B080AS		349010B080CS	
		C	11.10-11.50	282-292				349010C080AS		349010C080CS	
		D	11.40-11.80	290-300				349010D080AS		349010D080CS	
		E	11.80-12.20	300-310				349010E080AS		349010E080CS	

3490AS / 3490CS TAP SLEEVE W/FLANGE OUTLET

Nominal Pipe Size		Letter Code	Pipe OD Range		BY	Branch Size		Stainless Steel Flange with Stainless steel bolts and nuts		Carbon Steel Flange with alloy steel bolts and nuts	
Inches	MM		Inches	MM		Inches	MM	Part Number	List Price	Part Number	List Price
10	250	B	10.70-11.10	272-282	X	10	250	349010B100AS	\$ 2,950.20	349010B100CS	\$ 2,405.90
		C	11.10-11.50	282-292				349010C100AS		349010C100CS	
		D	11.40-11.80	290-300				349010D100AS		349010D100CS	
		E	11.80-12.20	300-310				349010E100AS		349010E100CS	
12	300	A	11.90-12.30	302-312	X	2	50	349012A020AS	\$ 1,680.00	349012A020CS	\$ 1,170.80
		B	12.50-12.90	318-328				349012B020AS		349012B020CS	
		C	13.20-13.60	335-345				349012C020AS		349012C020CS	
		D	13.40-13.80	340-351				349012D020AS		349012D020CS	
		E	13.90-14.30	355-363				349012E020AS		349012E020CS	
12	300	A	11.90-12.30	302-312	X	3	80	349012A030AS	\$ 1,697.40	349012A030CS	\$ 1,182.90
		B	12.50-12.90	318-328				349012B030AS		349012B030CS	
		C	13.20-13.60	335-345				349012C030AS		349012C030CS	
		D	13.40-13.80	340-351				349012D030AS		349012D030CS	
		E	13.90-14.30	355-363				349012E030AS		349012E030CS	
12	300	A	11.90-12.30	302-312	X	4	100	349012A040AS	\$ 1,723.30	349012A040CS	\$ 1,201.00
		B	12.50-12.90	318-328				349012B040AS		349012B040CS	
		C	13.20-13.60	335-345				349012C040AS		349012C040CS	
		D	13.40-13.80	340-351				349012D040AS		349012D040CS	
		E	13.90-14.30	355-363				349012E040AS		349012E040CS	
12	300	A	11.90-12.30	302-312	X	6	150	349012A060AS	\$ 1,908.40	349012A060CS	\$ 1,292.50
		B	12.50-12.90	318-328				349012B060AS		349012B060CS	
		C	13.20-13.60	335-345				349012C060AS		349012C060CS	
		D	13.40-13.80	340-351				349012D060AS		349012D060CS	
		E	13.90-14.30	355-363				349012E060AS		349012E060CS	
12	300	A	11.90-12.30	302-312	X	8	200	349012A080AS	\$ 2,395.00	349012A080CS	\$ 1,938.30
		B	12.50-12.90	318-328				349012B080AS		349012B080CS	
		C	13.20-13.60	335-345				349012C080AS		349012C080CS	
		D	13.40-13.80	340-351				349012D080AS		349012D080CS	
		E	13.90-14.30	355-363				349012E080AS		349012E080CS	
12	300	A	11.90-12.30	302-312	X	10	250	349012A100AS	\$ 3,043.70	349012A100CS	\$ 2,508.40
		B	12.50-12.90	318-328				349012B100AS		349012B100CS	
		C	13.20-13.60	335-345				349012C100AS		349012C100CS	
		D	13.40-13.80	340-351				349012D100AS		349012D100CS	
		E	13.90-14.30	355-363				349012E100AS		349012E100CS	
12	300	B	12.50-12.90	318-328	X	12	300	349012B120AS	\$ 3,374.00	349012B120CS	\$ 2,721.30
		C	13.20-13.60	335-345				349012C120AS		349012C120CS	
		D	13.40-13.80	340-351				349012D120AS		349012D120CS	
		E	13.90-14.30	355-363				349012E120AS		349012E120CS	
14	350	A	15.00-15.40	381-391	X	2	50	349014A020AS	\$ 1,983.70	349014A020CS	\$ 1,964.30
		B	15.30-15.70	389-399				349014B020AS		349014B020CS	
		C	15.90-16.30	404-414				349014C020AS		349014C020CS	
		D	16.40-16.80	417-427				349014D020AS		349014D020CS	

3490AS / 3490CS TAP SLEEVE W/FLANGE OUTLET

Nominal Pipe Size		Letter Code	Pipe OD Range		BY	Branch Size		Stainless Steel Flange with Stainless steel bolts and nuts		Carbon Steel Flange with alloy steel bolts and nuts	
Inches	MM		Inches	MM		Inches	MM	Part Number	List Price	Part Number	List Price
14	350	A	15.00-15.40	381-391	X	3	80	349014A030AS	\$ 2,004.10	349014A030CS	\$ 1,984.50
		B	15.30-15.70	389-399				349014B030AS		349014B030CS	
		C	15.90-16.30	404-414				349014C030AS		349014C030CS	
		D	16.40-16.80	417-427				349014D030AS		349014D030CS	
14	350	A	15.00-15.40	381-391	X	4	100	349014A040AS	\$ 2,034.80	349014A040CS	\$ 2,014.90
		B	15.30-15.70	389-399				349014B040AS		349014B040CS	
		C	15.90-16.30	404-414				349014C040AS		349014C040CS	
		D	16.40-16.80	417-427				349014D040AS		349014D040CS	
14	350	A	15.00-15.40	381-391	X	6	150	349014A060AS	\$ 2,216.90	349014A060CS	\$ 2,176.00
		B	15.30-15.70	389-399				349014B060AS		349014B060CS	
		C	15.90-16.30	404-414				349014C060AS		349014C060CS	
		D	16.40-16.80	417-427				349014D060AS		349014D060CS	
14	350	A	15.00-15.40	381-391	X	8	200	349014A080AS	\$ 2,665.60	349014A080CS	\$ 2,597.90
		B	15.30-15.70	389-399				349014B080AS		349014B080CS	
		C	15.90-16.30	404-414				349014C080AS		349014C080CS	
		D	16.40-16.80	417-427				349014D080AS		349014D080CS	
14	350	A	15.00-15.40	381-391	X	10	250	349014A100AS	\$ 3,377.00	349014A100CS	\$ 3,324.30
		B	15.30-15.70	389-399				349014B100AS		349014B100CS	
		C	15.90-16.30	404-414				349014C100AS		349014C100CS	
		D	16.40-16.80	417-427				349014D100AS		349014D100CS	
14	350	A	15.00-15.40	381-391	X	12	300	349014A120AS	\$ 3,792.90	349014A120CS	\$ 3,703.40
		B	15.30-15.70	389-399				349014B120AS		349014B120CS	
		C	15.90-16.30	404-414				349014C120AS		349014C120CS	
		D	16.40-16.80	417-427				349014D120AS		349014D120CS	
16	400	A	17.00-17.40	432-442	X	2	50	349016A020AS	\$ 2,376.50	349016A020CS	\$ 1,964.20
		B	17.40-17.80	442-452				349016B020AS		349016B020CS	
		C	17.70-18.10	450-460				349016C020AS		349016C020CS	
16	400	A	17.00-17.40	432-442	X	3	80	349016A030AS	\$ 2,401.00	349016A030CS	\$ 1,984.50
		B	17.40-17.80	442-452				349016B030AS		349016B030CS	
		C	17.70-18.10	450-460				349016C030AS		349016C030CS	
16	400	A	17.00-17.40	432-442	X	4	100	349016A040AS	\$ 2,437.80	349016A040CS	\$ 2,014.90
		B	17.40-17.80	442-452				349016B040AS		349016B040CS	
		C	17.70-18.10	450-460				349016C040AS		349016C040CS	
16	400	A	17.00-17.40	432-442	X	6	150	349016A060AS	\$ 2,758.10	349016A060CS	\$ 2,176.00
		B	17.40-17.80	442-452				349016B060AS		349016B060CS	
		C	17.70-18.10	450-460				349016C060AS		349016C060CS	
16	400	A	17.00-17.40	432-442	X	8	200	349016A080AS	\$ 2,997.90	349016A080CS	\$ 2,597.90
		B	17.40-17.80	442-452				349016B080AS		349016B080CS	
		C	17.70-18.10	450-460				349016C080AS		349016C080CS	
16	400	A	17.00-17.40	432-442	X	10	250	349016A100AS	\$ 3,757.10	349016A100CS	\$ 3,324.30
		B	17.40-17.80	442-452				349016B100AS		349016B100CS	
		C	17.70-18.10	450-460				349016C100AS		349016C100CS	

3490AS / 3490CS TAP SLEEVE W/FLANGE OUTLET

Nominal Pipe Size		Letter Code	Pipe OD Range		BY	Branch Size		Stainless Steel Flange with Stainless steel bolts and nuts		Carbon Steel Flange with alloy steel bolts and nuts	
Inches	MM		Inches	MM		Inches	MM	Part Number	List Price	Part Number	List Price
16	400	A	17.00-17.40	432-442	X	12	300	349016A120AS	\$ 4,112.30	349016A120CS	\$ 3,703.40
		B	17.40-17.80	442-452				349016B120AS		349016B120CS	
		C	17.70-18.10	450-460				349016C120AS		349016C120CS	
16	400	A	17.00-17.40	432-442	X	16	400	349016A160AS	\$ 11,104.40	349016A160CS	\$ 10,704.40
		B	17.40-17.80	442-452				349016B160AS		349016B160CS	
		C	17.70-18.10	450-460				349016C160AS		349016C160CS	
18	450	A	18.40-18.80	467-478	X	2	50	349018A020AS	\$ 2,376.50	349018A020CS	\$ 2,363.90
		B	18.60-19.00	472-483				349018B020AS		349018B020CS	
		C	19.30-19.70	490-500				349018C020AS		349018C020CS	
		D	19.80-20.20	503-513				349018D020AS		349018D020CS	
18	450	A	18.40-18.80	467-478	X	3	80	349018A030AS	\$ 2,401.00	349018A030CS	\$ 2,388.30
		B	18.60-19.00	472-483				349008B030AS		349008B030CS	
		C	19.30-19.70	490-500				349018C030AS		349018C030CS	
		D	19.80-20.20	503-513				349018D030AS		349018D030CS	
18	450	A	18.40-18.80	467-478	X	4	100	349018A040AS	\$ 2,437.80	349018A040CS	\$ 2,424.80
		B	18.60-19.00	472-483				349018B040AS		349018B040CS	
		C	19.30-19.70	490-500				349018C040AS		349018C040CS	
		D	19.80-20.20	503-513				349018D040AS		349018D040CS	
18	450	A	18.40-18.80	467-478	X	6	150	349018A060AS	\$ 2,758.10	349018A060CS	\$ 2,730.30
		B	18.60-19.00	472-483				349018B060AS		349018B060CS	
		C	19.30-19.70	490-500				349018C060AS		349018C060CS	
		D	19.80-20.20	503-513				349018D060AS		349018D060CS	
18	450	A	18.40-18.80	467-478	X	8	200	349018A080AS	\$ 3,200.90	349018A080CS	\$ 3,144.20
		B	18.60-19.00	472-483				349018B080AS		349018B080CS	
		C	19.30-19.70	490-500				349018C080AS		349018C080CS	
		D	19.80-20.20	503-513				349018D080AS		349018D080CS	
18	450	A	18.40-18.80	467-478	X	10	250	349018A100AS	\$ 3,585.70	349018A100CS	\$ 3,452.40
		B	18.60-19.00	472-483				349018B100AS		349018B100CS	
		C	19.30-19.70	490-500				349018C100AS		349018C100CS	
		D	19.80-20.20	503-513				349018D100AS		349018D100CS	
18	400	A	18.40-18.80	467-478	X	12	300	349018A120AS	\$ 3,997.70	349018A120CS	\$ 3,824.00
		B	18.60-19.00	472-483				349018B120AS		349018B120CS	
		C	19.30-19.70	490-500				349018C120AS		349018C120CS	
		D	19.80-20.20	503-513				349018D120AS		349018D120CS	
18	450	A	18.40-18.80	467-478	X	16	300	349018A160AS	\$ 12,432.40	349018A160CS	\$ 11,916.40
		B	18.60-19.00	472-483				349018B160AS		349018B160CS	
		C	19.30-19.70	490-500				349018C160AS		349018C160CS	
		D	19.80-20.20	503-513				349018D160AS		349018D160CS	

3490AS / 3490CS TAP SLEEVE W/FLANGE OUTLET

Nominal Pipe Size		Letter Code	Pipe OD Range		BY	Branch Size		Stainless Steel Flange with Stainless steel bolts and nuts		Carbon Steel Flange with alloy steel bolts and nuts	
Inches	MM		Inches	MM		Inches	MM	Part Number	List Price	Part Number	List Price
18	450	A	18.40-18.80	467-478	X	18	400	N/A	POA	N/A	POA
		B	18.60-19.00	472-483				N/A		N/A	
		C	19.30-19.70	490-500				349018C180AS		349018C180CS	
		D	19.80-20.20	503-513				349018D180AS		349018D180CS	
20	500	A	21.40-21.80	544-554	X	2	50	349020A020AS	\$ 2,505.50	349020A020CS	\$ 2,491.00
		B	21.90-22.30	556-566				349020B020AS		349020B020CS	
20	500	A	21.40-21.80	544-554	X	3	80	349020A030AS	\$ 2,531.30	349020A030CS	\$ 2,516.60
		B	21.90-22.30	556-566				349020B030AS		349020B030CS	
20	500	A	21.40-21.80	544-554	X	4	100	349020A040AS	\$ 2,570.00	349020A040CS	\$ 2,555.20
		B	21.90-22.30	556-566				349020B040AS		349020B040CS	
20	500	A	21.40-21.80	544-554	X	6	150	349020A060AS	\$ 2,761.10	349020A060CS	\$ 2,736.30
		B	21.90-22.30	556-566				349020B060AS		349020B060CS	
20	500	A	21.40-21.80	544-554	X	8	200	349020A080AS	\$ 3,235.70	349020A080CS	\$ 3,175.00
		B	21.90-22.30	556-566				349020B080AS		349020B080CS	
20	500	A	21.40-21.80	544-554	X	10	250	349020A100AS	\$ 3,619.00	349020A100CS	\$ 3,485.70
		B	21.90-22.30	556-566				349020B100AS		349020B100CS	
20	500	A	21.40-21.80	544-554	X	12	300	349020A120AS	\$ 4,151.90	349020A120CS	\$ 3,978.50
		B	21.90-22.30	556-566				349020B120AS		349020B120CS	
20	500	A	21.40-21.80	544-554	X	16	400	349020A160AS	\$ 13,768.40	349020A160CS	\$ 13,368.40
		B	21.90-22.30	556-566				349020B160AS		349020B160CS	
20	500	A	21.40-21.80	544-554	X	18	450	349020A180AS	POA	349020A180CS	POA
		B	21.90-22.30	556-566				349020B180AS		349020B180CS	
20	500	A	21.40-21.80	544-554	X	20	500	349020A200AS	POA	349020A200CS	POA
		B	21.90-22.30	556-566				349020B200AS		349020B200CS	
24	600	A	25.60-26.00	650-660	X	2	50	349024A020AS	\$ 2,640.30	349024A020CS	\$ 2,626.80
		B	26.20-26.60	665-676				349024B020AS		349024B020CS	
24	600	A	25.60-26.00	650-660	X	3	80	349024A030AS	\$ 2,667.60	349024A030CS	\$ 2,653.80
		B	26.20-26.60	665-676				349024B030AS		349024B030CS	
24	600	A	25.60-26.00	650-660	X	4	100	349024A040AS	\$ 2,708.40	349024A040CS	\$ 2,694.50
		B	26.20-26.60	665-676				349024B040AS		349024B040CS	
24	600	A	25.60-26.00	650-660	X	6	150	349024A060AS	\$ 2,953.20	349024A060CS	\$ 2,929.30
		B	26.20-26.60	665-676				349024B060AS		349024B060CS	
24	600	A	25.60-26.00	650-660	X	8	200	349024A080AS	\$ 3,530.30	349024A080CS	\$ 3,476.50
		B	26.20-26.60	665-676				349024B080AS		349024B080CS	
24	600	A	25.60-26.00	650-660	X	10	250	349024A100AS	\$ 3,848.00	349024A100CS	\$ 3,714.80
		B	26.20-26.60	665-676				349024B100AS		349024B100CS	

3490AS / 3490CS TAP SLEEVE W/FLANGE OUTLET

Nominal Pipe Size		Letter Code	Pipe OD Range		BY	Branch Size		Stainless Steel Flange with Stainless steel bolts and nuts		Carbon Steel Flange with alloy steel bolts and nuts	
Inches	MM		Inches	MM		Inches	MM	Part Number	List Price	Part Number	List Price
24	600	A	25.60-26.00	650-660	X	12	300	349024A120AS	\$ 4,380.90	349024A120CS	\$ 4,207.60
		B	26.20-26.60	665-676				349024B120AS		349024B120CS	
24	600	A	25.60-26.00	650-660	X	16	400	349024A160AS	\$ 15,100.40	349024A160CS	\$ 14,700.40
		B	26.20-26.60	665-676				349024B160AS		349024B160CS	
24	600	A	25.60-26.00	650-660	X	18	450	349024A180AS	POA	349024A180CS	POA
		B	26.20-26.60	665-676				349024B180AS		349024B180CS	
24	600	A	25.60-26.00	650-660	X	20	500	349024A200AS	POA	349024A200CS	POA
		B	26.20-26.60	665-676				349024B200AS		349024B200CS	
24	600	A	25.60-26.00	650-660	X	24	600	349024A240AS	POA	349024A240CS	POA
		B	26.20-26.60	665-676				349024B240AS		349024B240CS	

CUSTOM SIZES AVAILABLE.

HOW TO ORDER: Choose the Pipe Size Letter Code corresponding to a Pipe OD Range that covers the Pipe OD to be tapped and then specify the desired branch size. **EXAMPLE:** 16" Asbestos-Cement Class 150 O.D. 18.72 with 8 inch Stainless steel Branch. Order 3490AS -18B x 8. **Part Number:** 349018B080AS .

For Outlet Sizes 14" and above the tapping valve being used must be advised to PowerSeal in order to guarantee proper alignment recess mating. 30", 36", 42", and 48" nominal size sleeves available with outlet sizes 2" through 24".

NOTE: IF STAINLEES STEEL BOLTS ARE REQUIRED WITH CARBON STEEL FLANGED SLEEVE YOU MUST NOTIFY POWERSEAL CUSTOMER SERVICE AT TIME OF ORDERING. ADDITIONAL CHARGES APPLY



COATING OPTION: Anti-Seizing/Galling protection. Available for both Alloy and SST application. Inquire with sales for cost and availability.

3490AS MJ / 3490CS MJ-CS TAP SLEEVE W/MECHANICAL JOINT OUTLET

MJ OUTLET: Type 304 (18-8) Stainless Steel per ASTM A743 and ANSI/AWWA C111. Or Carbon Steel. Solid One-Piece casting.

PANEL: Type 304 (18-8) Stainless Steel per ASTM A240.

SHELL GASKET: SBR Chek-O-Seal with multi o-ring sealing ribs from 100% new rubber to ensure performance under varying pressures with superior storage characteristics. Suitable for mild acids, water and salt media with a temperature range of -25°F to +200°F per ASTM D2000. Other materials available.

BRANCH GASKET: NBR per ASTM D2000 with Hydro TwinSeal® dual o-ring design incorporating both hydrostatic and mechanical forces to affect a dynamic seal.

BOLTS & NUTS: Type 304 (18-8) Stainless Steel per ASTM A193 and A194 for sleeves with Stainless Steel MJ and Low Alloy Steel Bolts and Nuts per ASTM A325 and ASTM A563 for sleeves with Carbon Steel MJ. NOTE: Stainless Steel hex nuts are furnished with fusion bonded coating to prevent seizing and galling.



Nominal Pipe Size		Letter Code	Pipe OD Range		BY	Branch Size		Stainless Steel MJ with Stainless steel bolts and nuts		Carbon Steel MJ with alloy steel bolts and nuts	
Inches	MM		Inches	MM		Inches	MM	Part Number	List Price	Part Number	List Price
4	100	A	4.50-4.70	114-119	X	2	50	349004A020MJ	\$ 1,508.70	349004A020MJ-CS	\$ 1,387.80
		B	4.70-4.90	119-124				349004B020MJ		349004B020MJ-CS	
		C	4.80-5.00	112-127				349004C020MJ		349004C020MJ-CS	
		D	5.10-5.30	130-135				349004D020MJ		349004D020MJ-CS	
		E	5.20-5.40	132-137				349004E020MJ		349004E020MJ-CS	
4	100	A	4.50-4.70	114-119	X	3	80	349004A030MJ	\$ 1,525.30	349004A030MJ-CS	\$ 1,387.80
		B	4.70-4.90	119-124				349004B030MJ		349004B030MJ-CS	
		C	4.80-5.00	112-127				349004C030MJ		349004C030MJ-CS	
		D	5.10-5.30	130-135				349004D030MJ		349004D030MJ-CS	
		E	5.20-5.40	132-137				349004E030MJ		349004E030MJ-CS	
4	100	A	4.50-4.70	114-119	X	4	100	349004A040MJ	\$ 1,525.30	349004A040MJ-CS	\$ 1,387.80
		B	4.70-4.90	119-124				349004B040MJ		349004B040MJ-CS	
		C	4.80-5.00	112-127				349004C040MJ		349004C040MJ-CS	
		D	5.10-5.30	130-135				349004D040MJ		349004D040MJ-CS	
		E	5.20-5.40	132-137				349004E040MJ		349004E040MJ-CS	
6	150	A	6.00-6.20	152-157	X	2	50	349006A020MJ	\$ 1,465.20	349006A020MJ-CS	\$ 1,398.90
		B	6.60-7.00	168-178				349006B020MJ		349006B020MJ-CS	
		C	6.90-7.30	175-185				349006C020MJ		349006C020MJ-CS	
		D	7.10-7.50	180-191				349006D020MJ		349006D020MJ-CS	
6	150	A	6.00-6.20	152-157	X	3	80	349006A030MJ	\$ 1,481.30	349006A030MJ-CS	\$ 1,398.90
		B	6.60-7.00	168-178				349006B030MJ		349006B030MJ-CS	
		C	6.90-7.30	175-185				349006C030MJ		349006C030MJ-CS	
		D	7.10-7.50	180-191				349006D030MJ		349006D030MJ-CS	
6	150	A	6.00-6.20	152-157	X	4	100	349006A040MJ	\$ 1,497.80	349006A040MJ-CS	\$ 1,398.90
		B	6.60-7.00	168-178				349006B040MJ		349006B040MJ-CS	
		C	6.90-7.30	175-185				349006C040MJ		349006C040MJ-CS	
		D	7.10-7.50	180-191				349006D040MJ		349006D040MJ-CS	

3490AS MJ / 3490CS MJ-CS TAP SLEEVE W/MECHANICAL JOINT OUTLET

Nominal Pipe Size		Letter Code	Pipe OD Range		BY	Branch Size		Stainless Steel MJ with Stainless steel bolts and nuts		Carbon Steel MJ with alloy steel bolts and nuts	
Inches	MM		Inches	MM		Inches	MM	Part Number	List Price	Part Number	List Price
6	150	B	6.60-7.00	168-178	X	6	150	349006B060MJ	\$ 1,663.30	349006B060MJ-CS	\$ 1,464.50
		C	6.90-7.30	175-185				349006C060MJ		349006C060MJ-CS	
		D	7.10-7.50	180-191				349006D060MJ		349006D060MJ-CS	
8	200	A	7.90-8.30	201-211	X	2	50	349008A020MJ	\$ 1,555.40	349008A020MJ-CS	\$ 1,506.60
		B	8.60-9.05	218-230				349008B020MJ		349008B020MJ-CS	
		C	9.05-9.45	230-240				349008C020MJ		349008C020MJ-CS	
		D	9.20-9.60	234-244				349008D020MJ		349008D020MJ-CS	
8	200	A	7.90-8.30	201-211	X	3	80	349008A030MJ	\$ 1,572.50	349008A030MJ-CS	\$ 1,506.70
		B	8.60-9.05	218-230				349008B030MJ		349008B030MJ-CS	
		C	9.05-9.45	230-240				349008C030MJ		349008C030MJ-CS	
		D	9.20-9.60	234-244				349008D030MJ		349008D030MJ-CS	
8	200	A	7.90-8.30	201-211	X	4	100	349008A040MJ	\$ 1,590.00	349008A040MJ-CS	\$ 1,506.70
		B	8.60-9.05	218-230				349008B040MJ		349008B040MJ-CS	
		C	9.05-9.45	230-240				349008C040MJ		349008C040MJ-CS	
		D	9.20-9.60	234-244				349008D040MJ		349008D040MJ-CS	
8	200	A	7.90-8.30	201-211	X	6	150	349008A060MJ	\$ 1,785.60	349008A060MJ-CS	\$ 1,578.60
		B	8.60-9.05	218-230				349008B060MJ		349008B060MJ-CS	
		C	9.05-9.45	230-240				349008C060MJ		349008C060MJ-CS	
		D	9.20-9.60	234-244				349008D060MJ		349008D060MJ-CS	
8	200	B	8.60-9.05	218-230	X	8	200	349008B080MJ	\$ 2,476.70	349008B080MJ-CS	\$ 1,871.10
		C	9.05-9.45	230-240				349008C080MJ		349008C080MJ-CS	
		D	9.20-9.60	234-244				349008D080MJ		349008D080MJ-CS	
10	250	A	9.90-10.30	251-262	X	2	50	349010A020MJ	\$ 1,778.30	349010A020MJ-CS	\$ 1,744.40
		B	10.70-11.10	272-282				349010B020MJ		349010B020MJ-CS	
		C	11.10-11.50	282-292				349010C020MJ		349010C020MJ-CS	
		D	11.40-11.80	290-300				349010D020MJ		349010D020MJ-CS	
		E	11.80-12.20	300-310				349010E020MJ		349010E020MJ-CS	
10	250	A	9.90-10.30	251-262	X	3	80	349010A030MJ	\$ 1,797.80	349010A030MJ-CS	\$ 1,744.40
		B	10.70-11.10	272-282				349010B030MJ		349010B030MJ-CS	
		C	11.10-11.50	282-292				349010C030MJ		349010C030MJ-CS	
		D	11.40-11.80	290-300				349010D030MJ		349010D030MJ-CS	
		E	11.80-12.20	300-310				349010E030MJ		349010E030MJ-CS	
10	250	A	9.90-10.30	251-262	X	4	100	349010A040MJ	\$ 1,817.80	349010A040MJ-CS	\$ 1,744.40
		B	10.70-11.10	272-282				349010B040MJ		349010B040MJ-CS	
		C	11.10-11.50	282-292				349010C040MJ		349010C040MJ-CS	
		D	11.40-11.80	290-300				349010D040MJ		349010D040MJ-CS	
		E	11.80-12.20	300-310				349010E040MJ		349010E040MJ-CS	

3490AS MJ / 3490CS MJ-CS TAP SLEEVE W/MECHANICAL JOINT OUTLET

Nominal Pipe Size		Letter Code	Pipe OD Range		BY	Branch Size		Stainless Steel MJ with Stainless steel bolts and nuts		Carbon Steel MJ with alloy steel bolts and nuts	
Inches	MM		Inches	MM		Inches	MM	Part Number	List Price	Part Number	List Price
10	250	A	9.90-10.30	251-262	X	6	150	349010A060MJ	\$ 2,032.20	349010A060MJ-CS	\$ 1,836.70
		B	10.70-11.10	272-282				349010B060MJ		349010B060MJ-CS	
		C	11.10-11.50	282-292				349010C060MJ		349010C060MJ-CS	
		D	11.40-11.80	290-300				349010D060MJ		349010D060MJ-CS	
		E	11.80-12.20	300-310				349010E060MJ		349010E060MJ-CS	
10	250	A	9.90-10.30	251-262	X	8	200	349010A080MJ	\$ 2,520.00	349010A080MJ-CS	\$ 2,181.10
		B	10.70-11.10	272-282				349010B080MJ		349010B080MJ-CS	
		C	11.10-11.50	282-292				349010C080MJ		349010C080MJ-CS	
		D	11.40-11.80	290-300				349010D080MJ		349010D080MJ-CS	
		E	11.80-12.20	300-310				349010E080MJ		349010E080MJ-CS	
10	250	B	10.70-11.10	272-282	X	10	250	349010B100MJ	\$ 3,764.40	349010B100MJ-CS	\$ 3,425.40
		C	11.10-11.50	282-292				349010C100MJ		349010C100MJ-CS	
		D	11.40-11.80	290-300				349010D100MJ		349010D100MJ-CS	
		E	11.80-12.20	300-310				349010E100MJ		349010E100MJ-CS	
12	300	A	11.90-12.30	302-312	X	2	50	349012A020MJ	\$ 1,979.30	349012A020MJ-CS	\$ 1,918.50
		B	12.50-12.90	318-328				349012B020MJ		349012B020MJ-CS	
		C	13.20-13.60	335-345				349012C020MJ		349012C020MJ-CS	
		D	13.40-13.80	340-351				349012D020MJ		349012D020MJ-CS	
		E	13.90-14.30	355-363				349012E020MJ		349012E120MJ-CS	
12	300	A	11.90-12.30	302-312	X	3	80	349012A030MJ	\$ 2,001.20	349012A030MJ-CS	\$ 1,939.60
		B	12.50-12.90	318-328				349012B030MJ		349012B030MJ-CS	
		C	13.20-13.60	335-345				349012C030MJ		349012C030MJ-CS	
		D	13.40-13.80	340-351				349012D030MJ		349012D030MJ-CS	
		E	13.90-14.30	355-363				349012E030MJ		349012E030MJ-CS	
12	300	A	11.90-12.30	302-312	X	4	100	349012A040MJ	\$ 2,023.30	349012A040MJ-CS	\$ 1,961.10
		B	12.50-12.90	318-328				349012B040MJ		349012B040MJ-CS	
		C	13.20-13.60	335-345				349012C040MJ		349012C040MJ-CS	
		D	13.40-13.80	340-351				349012D040MJ		349012D040MJ-CS	
		E	13.90-14.30	355-363				349012E040MJ		349012E040MJ-CS	
12	300	A	11.90-12.30	302-312	X	6	150	349012A060MJ	\$ 2,301.10	349012A060MJ-CS	\$ 2,117.80
		B	12.50-12.90	318-328				349012B060MJ		349012B060MJ-CS	
		C	13.20-13.60	335-345				349012C060MJ		349012C060MJ-CS	
		D	13.40-13.80	340-351				349012D060MJ		349012D060MJ-CS	
		E	13.90-14.30	355-363				349012E060MJ		349012E060MJ-CS	
12	300	A	11.90-12.30	302-312	X	8	200	349012A080MJ	\$ 2,917.80	349012A080MJ-CS	\$ 2,600.00
		B	12.50-12.90	318-328				349012B080MJ		349012B080MJ-CS	
		C	13.20-13.60	335-345				349012C080MJ		349012C080MJ-CS	
		D	13.40-13.80	340-351				349012D080MJ		349012D080MJ-CS	
		E	13.90-14.30	355-363				349012E080MJ		349012E080MJ-CS	

3490AS MJ / 3490CS MJ-CS TAP SLEEVE W/MECHANICAL JOINT OUTLET

Nominal Pipe Size		Letter Code	Pipe OD Range		BY	Branch Size		Stainless Steel MJ with Stainless steel bolts and nuts		Carbon Steel MJ with alloy steel bolts and nuts	
Inches	MM		Inches	MM		Inches	MM	Part Number	List Price	Part Number	List Price
12	300	A	11.90-12.30	302-312	X	10	250	349012A100MJ	\$ 3,695.60	349012A100MJ-CS	\$ 3,400.00
		B	12.50-12.90	318-328				349012B100MJ		349012B100MJ-CS	
		C	13.20-13.60	335-345				349012C100MJ		349012C100MJ-CS	
		D	13.40-13.80	340-351				349012D100MJ		349012D100MJ-CS	
		E	13.90-14.30	355-363				349012E100MJ		349012E100MJ-CS	
12	300	B	12.50-12.90	318-328	X	12	300	349012B120MJ	\$ 3,986.70	349012B120MJ-CS	\$ 3,764.40
		C	13.20-13.60	335-345				349012C120MJ		349012C120MJ-CS	
		D	13.40-13.80	340-351				349012D120MJ		349012D120MJ-CS	
		E	13.90-14.30	355-363				349012E120MJ		349012E120MJ-CS	
14	350	A	15.00-15.40	381-391	X	2	50	349014A020MJ	\$ 2,317.40	349014A020MJ-CS	\$ 2,289.10
		B	15.30-15.70	389-399				349014B020MJ		349014B020MJ-CS	
		C	15.90-16.30	404-414				349014C020MJ		349014C020MJ-CS	
		D	16.40-16.80	417-427				349014D020MJ		349014D020MJ-CS	
14	350	A	15.00-15.40	381-391	X	3	80	349014A030MJ	\$ 2,342.90	349014A030MJ-CS	\$ 2,314.30
		B	15.30-15.70	389-399				349014B030MJ		349014B030MJ-CS	
		C	15.90-16.30	404-414				349014C030MJ		349014C030MJ-CS	
		D	16.40-16.80	417-427				349014D030MJ		349014D030MJ-CS	
14	350	A	15.00-15.40	381-391	X	4	100	349014A040MJ	\$ 2,368.90	349014A040MJ-CS	\$ 2,340.00
		B	15.30-15.70	389-399				349014B040MJ		349014B040MJ-CS	
		C	15.90-16.30	404-414				349014C040MJ		349014C040MJ-CS	
		D	16.40-16.80	417-427				349014D040MJ		349014D040MJ-CS	
14	350	A	15.00-15.40	381-391	X	6	150	349014A060MJ	\$ 2,650.00	349014A060MJ-CS	\$ 2,593.40
		B	15.30-15.70	389-399				349014B060MJ		349014B060MJ-CS	
		C	15.90-16.30	404-414				349014C060MJ		349014C060MJ-CS	
		D	16.40-16.80	417-427				349014D060MJ		349014D060MJ-CS	
14	350	A	15.00-15.40	381-391	X	8	200	349014A080MJ	\$ 3,221.10	349014A080MJ-CS	\$ 3,151.10
		B	15.30-15.70	389-399				349014B080MJ		349014B080MJ-CS	
		C	15.90-16.30	404-414				349014C080MJ		349014C080MJ-CS	
		D	16.40-16.80	417-427				349014D080MJ		349014D080MJ-CS	
14	350	A	15.00-15.40	381-391	X	10	250	349014A100MJ	\$ 4,067.80	349014A100MJ-CS	\$ 3,993.30
		B	15.30-15.70	389-399				349014B100MJ		349014B100MJ-CS	
		C	15.90-16.30	404-414				349014C100MJ		349014C100MJ-CS	
		D	16.40-16.80	417-427				349014D100MJ		349014D100MJ-CS	
14	350	A	15.00-15.40	381-391	X	12	300	349014A120MJ	\$ 4,456.70	349014A120MJ-CS	\$ 4,447.80
		B	15.30-15.70	389-399				349014B120MJ		349014B120MJ-CS	
		C	15.90-16.30	404-414				349014C120MJ		349014C120MJ-CS	
		D	16.40-16.80	417-427				349014D120MJ		349014D120MJ-CS	
16	400	A	17.00-17.40	432-442	X	2	50	349016A020MJ	\$ 2,756.50	349016A020MJ-CS	\$ 2,738.00
		B	17.40-17.80	442-452				349016B020MJ		349016B020MJ-CS	
		C	17.70-18.10	450-460				349016C020MJ		349016C020MJ-CS	

3490AS MJ / 3490CS MJ-CS TAP SLEEVE W/MECHANICAL JOINT OUTLET

Nominal Pipe Size		Letter Code	Pipe OD Range		BY	Branch Size		Stainless Steel MJ with Stainless steel bolts and nuts		Carbon Steel MJ with alloy steel bolts and nuts	
Inches	MM		Inches	MM		Inches	MM	Part Number	List Price	Part Number	List Price
16	400	A	17.00-17.40	432-442	X	3	80	349016A030MJ	\$ 2,786.80	349016A030MJ-CS	\$ 2,768.10
		B	17.40-17.80	442-452				349016B030MJ		349016B030MJ-CS	
		C	17.70-18.10	450-460				349016C030MJ		349016C030MJ-CS	
16	400	A	17.00-17.40	432-442	X	4	100	349016A040MJ	\$ 2,817.80	349016A040MJ-CS	\$ 2,798.90
		B	17.40-17.80	442-452				349016B040MJ		349016B040MJ-CS	
		C	17.70-18.10	450-460				349016C040MJ		349016C040MJ-CS	
16	400	A	17.00-17.40	432-442	X	6	150	349016A060MJ	\$ 3,254.40	349016A060MJ-CS	\$ 3,210.00
		B	17.40-17.80	442-452				349016B060MJ		349016B060MJ-CS	
		C	17.70-18.10	450-460				349016C060MJ		349016C060MJ-CS	
16	400	A	17.00-17.40	432-442	X	8	200	349016A080MJ	\$ 3,595.60	349016A080MJ-CS	\$ 3,528.90
		B	17.40-17.80	442-452				349016B080MJ		349016B080MJ-CS	
		C	17.70-18.10	450-460				349016C080MJ		349016C080MJ-CS	
16	400	A	17.00-17.40	432-442	X	10	250	349016A100MJ	\$ 3,839.90	349016A100MJ-CS	\$ 3,782.00
		B	17.40-17.80	442-452				349016B100MJ		349016B100MJ-CS	
		C	17.70-18.10	450-460				349016C100MJ		349016C100MJ-CS	
16	400	A	17.00-17.40	432-442	X	12	300	349016A120MJ	\$ 4,812.20	349016A120MJ-CS	\$ 4,754.40
		B	17.40-17.80	442-452				349016B120MJ		349016B120MJ-CS	
		C	17.70-18.10	450-460				349016C120MJ		349016C120MJ-CS	
16	400	A	17.00-17.40	432-442	X	14	350	349016A140MJ	POA	349016A140MJ-CS	N/A
		B	17.40-17.80	442-452				349016B140MJ		349016B140MJ-CS	
		C	17.70-18.10	450-460				349016C140MJ		349016C140MJ-CS	
16	400	A	17.00-17.40	432-442	X	16	400	349016A160MJ	\$ 10,770.50	349016A160MJ-CS	POA
		B	17.40-17.80	442-452				349016B160MJ		349016B160MJ-CS	
		C	17.70-18.10	450-460				349016C160MJ		349016C160MJ-CS	
18	450	A	18.40-18.80	467-478	X	2	50	349018A020MJ	\$ 2,756.50	349018A020MJ-CS	\$ 2,738.00
		B	18.60-19.00	472-483				349018B020MJ		349018B020MJ-CS	
		C	19.30-19.70	490-500				349018C020MJ		349018C020MJ-CS	
		D	19.80-20.20	503-513				349018D020MJ		349018D020MJ-CS	
18	450	A	18.40-18.80	467-478	X	3	80	349018A030MJ	\$ 2,786.80	349018A030MJ-CS	\$ 2,768.20
		B	18.60-19.00	472-483				349018B030MJ		349008B030MJ-CS	
		C	19.30-19.70	490-500				349018C030MJ		349018C030MJ-CS	
		D	19.80-20.20	503-513				349018D030MJ		349018D030MJ-CS	
18	450	A	18.40-18.80	467-478	X	4	100	349018A040MJ	\$ 2,817.80	349018A040MJ-CS	\$ 2,798.90
		B	18.60-19.00	472-483				349018B040MJ		349018B040MJ-CS	
		C	19.30-19.70	490-500				349018C040MJ		349018C040MJ-CS	
		D	19.80-20.20	503-513				349018D040MJ		349018D040MJ-CS	
18	450	A	18.40-18.80	467-478	X	6	150	349018A060MJ	\$ 3,254.40	349018A060MJ-CS	\$ 3,210.00
		B	18.60-19.00	472-483				349018B060MJ		349018B060MJ-CS	
		C	19.30-19.70	490-500				349018C060MJ		349018C060MJ-CS	
		D	19.80-20.20	503-513				349018D060MJ		349018D060MJ-CS	

3490AS MJ / 3490CS MJ-CS TAP SLEEVE W/MECHANICAL JOINT OUTLET

Nominal Pipe Size		Letter Code	Pipe OD Range		BY	Branch Size		Stainless Steel MJ with Stainless steel bolts and nuts		Carbon Steel MJ with alloy steel bolts and nuts	
Inches	MM		Inches	MM		Inches	MM	Part Number	List Price	Part Number	List Price
18	450	A	18.40-18.80	467-478	X	8	200	349018A080MJ	\$ 3,822.20	349018A080MJ-CS	\$ 3,757.80
		B	18.60-19.00	472-483				349018B080MJ		349018B080MJ-CS	
		C	19.30-19.70	490-500				349018C080MJ		349018C080MJ-CS	
		D	19.80-20.20	503-513				349018D080MJ		349018D080MJ-CS	
18	450	A	18.40-18.80	467-478	X	10	250	349018A100MJ	\$ 5,328.00	349018A100MJ-CS	\$ 5,141.30
		B	18.60-19.00	472-483				349018B100MJ		349018B100MJ-CS	
		C	19.30-19.70	490-500				349018C100MJ		349018C100MJ-CS	
		D	19.80-20.20	503-513				349018D100MJ		349018D100MJ-CS	
18	450	A	18.40-18.80	467-478	X	12	300	349018A120MJ	\$ 7,043.60	349018A120MJ-CS	\$ 6,816.90
		B	18.60-19.00	472-483				349018B120MJ		349018B120MJ-CS	
		C	19.30-19.70	490-500				349018C120MJ		349018C120MJ-CS	
		D	19.80-20.20	503-513				349018D120MJ		349018D120MJ-CS	
18	450	A	18.40-18.80	467-478	X	14	350	349018A140MJ	POA	N/A	N/A
		B	18.60-19.00	472-483				349018B140MJ		N/A	
		C	19.30-19.70	490-500				349018C140MJ		N/A	
		D	19.80-20.20	503-513				349018D140MJ		N/A	
18	450	A	18.40-18.80	467-478	X	16	300	349018A160MJ	\$ 15,984.00	349018A160MJ-CS	POA
		B	18.60-19.00	472-483				349018B160MJ		349018B160MJ-CS	
		C	19.30-19.70	490-500				349018C160MJ		349018C160MJ-CS	
		D	19.80-20.20	503-513				349018D160MJ		349018D160MJ-CS	
18	450	A	18.40-18.80	467-478	X	18	400	N/A	POA	N/A	N/A
		B	18.60-19.00	472-483				N/A		N/A	
		C	19.30-19.70	490-500				349018C180MJ		N/A	
		D	19.80-20.20	503-513				349018D180MJ		N/A	
20	500	A	21.40-21.80	544-554	X	2	50	349020A020MJ	\$ 2,904.30	349020A020MJ-CS	\$ 2,883.70
		B	21.90-22.30	556-566				349020B020MJ		349020B020MJ-CS	
20	500	A	21.40-21.80	544-554	X	3	80	349020A030MJ	\$ 2,936.30	349020A030MJ-CS	\$ 2,915.40
		B	21.90-22.30	556-566				349020B030MJ		349020B030MJ-CS	
20	500	A	21.40-21.80	544-554	X	4	100	349020A040MJ	\$ 2,968.90	349020A040MJ-CS	\$ 2,947.80
		B	21.90-22.30	556-566				349020B040MJ		349020B040MJ-CS	
20	500	A	21.40-21.80	544-554	X	6	150	349020A060MJ	\$ 3,255.60	349020A060MJ-CS	\$ 3,216.70
		B	21.90-22.30	556-566				349020B060MJ		349020B060MJ-CS	
20	500	A	21.40-21.80	544-554	X	8	200	349020A080MJ	\$ 3,860.00	349020A080MJ-CS	\$ 3,794.40
		B	21.90-22.30	556-566				349020B080MJ		349020B080MJ-CS	
20	500	A	21.40-21.80	544-554	X	10	250	349020A100MJ	\$ 4,663.10	349020A100MJ-CS	\$ 4,507.60
		B	21.90-22.30	556-566				349020B100MJ		349020B100MJ-CS	
20	500	A	21.40-21.80	544-554	X	12	300	349020A120MJ	\$ 5,996.40	349020A120MJ-CS	\$ 5,807.60
		B	21.90-22.30	556-566				349020B120MJ		349020B120MJ-CS	
20	500	A	21.40-21.80	544-554	X	14	250	349020A140MJ	POA	N/A	N/A
		B	21.90-22.30	556-566				349020B140MJ		N/A	
20	500	A	21.40-21.80	544-554	X	16	400	349020A160MJ	\$ 13,597.60	349020A160MJ-CS	POA
		B	21.90-22.30	556-566				349020B160MJ		349020B160MJ-CS	

3490AS MJ / 3490CS MJ-CS TAP SLEEVE W/MECHANICAL JOINT OUTLET

Nominal Pipe Size		Letter Code	Pipe OD Range		BY	Branch Size		Stainless Steel MJ with Stainless steel bolts and nuts		Carbon Steel MJ with alloy steel bolts and nuts	
Inches	MM		Inches	MM		Inches	MM	Part Number	List Price	Part Number	List Price
20	500	A	21.40-21.80	544-554	X	18	450	349020A180MJ	POA	N/A	N/A
		B	21.90-22.30	556-566				349020B180MJ		N/A	
20	500	A	21.40-21.80	544-554	X	20	500	349020A200MJ	POA	N/A	N/A
		B	21.90-22.30	556-566				349020B200MJ		N/A	
24	600	A	25.60-26.00	650-660	X	2	50	349024A020MJ	\$ 3,054.30	349024A020MJ-CS	\$ 3,033.70
		B	26.20-26.60	665-676				349024B020MJ		349024B020MJ-CS	
24	600	A	25.60-26.00	650-660	X	3	80	349024A030MJ	\$ 3,087.90	349024A030MJ-CS	\$ 3,067.00
		B	26.20-26.60	665-676				349024B030MJ		349024B030MJ-CS	
24	600	A	25.60-26.00	650-660	X	4	100	349024A040MJ	\$ 3,122.20	349024A040MJ-CS	\$ 3,101.10
		B	26.20-26.60	665-676				349024B040MJ		349024B040MJ-CS	
24	600	A	25.60-26.00	650-660	X	6	150	349024A060MJ	\$ 3,472.20	349024A060MJ-CS	\$ 3,432.20
		B	26.20-26.60	665-676				349024B060MJ		349024B060MJ-CS	
24	600	A	25.60-26.00	650-660	X	8	200	349024A080MJ	\$ 4,187.80	349024A080MJ-CS	\$ 4,130.00
		B	26.20-26.60	665-676				349024B080MJ		349024B080MJ-CS	
24	600	A	25.60-26.00	650-660	X	10	250	349024A100MJ	\$ 4,828.90	349024A100MJ-CS	\$ 4,674.10
		B	26.20-26.60	665-676				349024B100MJ		349024B100MJ-CS	
24	600	A	25.60-26.00	650-660	X	12	300	349024A120MJ	\$ 6,329.20	349024A120MJ-CS	\$ 6,140.30
		B	26.20-26.60	665-676				349024B120MJ		349024B120MJ-CS	
24	600	A	25.60-26.00	650-660	X	14	350	349024A140MJ	POA	N/A	N/A
		B	26.20-26.60	665-676				349024B140MJ		N/A	
24	600	A	25.60-26.00	650-660	X	16	400	349024A160MJ	\$ 14,430.00	349024A160MJ-CS	POA
		B	26.20-26.60	665-676				349024B160MJ		349024B160MJ-CS	
24	600	A	25.60-26.00	650-660	X	18	450	349024A180MJ	POA	N/A	N/A
		B	26.20-26.60	665-676				349024B180MJ		N/A	
24	600	A	25.60-26.00	650-660	X	20	500	349024A200MJ	POA	N/A	N/A
		B	26.20-26.60	665-676				349024B200MJ		N/A	
24	600	A	25.60-26.00	650-660	X	24	600	349024A240MJ	POA	N/A	N/A
		B	26.20-26.60	665-676				349024A240MJ		N/A	

CUSTOM SIZES AVAILABLE.

HOW TO ORDER: Choose the Pipe Size Letter Code corresponding to a Pipe OD Range that covers the Pipe OD to be tapped and then specify the desired branch size. EXAMPLE: 16" Asbestos-Cement Class 150 O.D. 18.72 with 8 inch Stainless Steel MJ Branch. Order 3490MJ -18B x 8. **Part Number:** 349018B080MJ

For Outlet Sizes 14" and above the tapping valve being used must be advised to PowerSeal in order to guarantee proper alignment recess mating. 30", 36", 42", and 48" nominal size sleeves available with outlet sizes 2" through 24".

*Manufactured under U.S. Patents 6,330,771.

NOTE: IF STAINLESS STEEL BOLTS ARE REQUIRED WITH CARBON STEEL MJ BRANCH SLEEVE YOU MUST NOTIFY POWERSEAL CUSTOMER SERVICE AT TIME OF ORDERING. ADDITIONAL CHARGES APPLY

3495AS TAP SLEEVE W/THREADED OUTLET

(FOR UNIQUE TAPPING REQUIREMENTS, LARGER DIAMETER PIPES AND THIN WALL PIPE NEEDING STABILIZATION)

OUTLET: Type 304 (18-8) Stainless Steel Per ASTM A276.

PANEL: Type 304 (18-8) Stainless Steel per ASTM A240.

BRANCH GASKET: NBR per ASTM D2000 with Hydro TwinSeal® dual o-ring design incorporating both hydrostatic and mechanical forces to affect a dynamic seal.

BOLTS & NUTS: Type 304 (18-8) Stainless Steel per ASTM A193 and A194 or Low Alloy Bolts and Nuts per ASTM A325 and ASTM A563. NOTE: Stainless Steel Hex nuts are furnished with fusion bonded coating to prevent seizing and galling.



Nominal Pipe Size		Letter Code	Pipe OD Range		Outlet Size	Part Number	List Price	Weight	
Inches	MM		Inches	MM				lbs	kgs
4	100	A	4.5	114	3/4 NPT	349504A075TC	\$ 780.00	21	9
					1 NPT	349504A100TE			
					1 1/4 NPT	349504A125TG			
					1 1/2 NPT	349504A150TI			
					2 NPT	349504A200TK			
					3 NPT	349504A300TP			
					4NPT	349504A400TM	\$ 903.50		
4	100	B	4.8	121	3/4 NPT	349504B075TC	\$ 780.00	21	9
					1 NPT	349504B100TE			
					1 1/4 NPT	349504B125TG			
					1 1/2 NPT	349504B150TI			
					2 NPT	349504B200TK			
					3 NPT	349504B300TP			
					4NPT	349504B400TM	\$ 903.50		
6	150	A	6.63	168	3/4 NPT	349506A075TC	\$ 844.80	23	10
					1 NPT	349506A100TE			
					1 1/4 NPT	349506A125TG			
					1 1/2 NPT	349506A150TI			
					2 NPT	349506A200TK			
					3 NPT	349506A300TP			
					4 NPT	349506A400TM	\$ 965.40		
6	150	B	6.90	175	3/4 NPT	349506B075TC	\$ 844.80	23	10
					1 NPT	349506B100TE			
					1 1/4 NPT	349506B125TG			
					1 1/2 NPT	349506B150TI			
					2 NPT	349506B200TK			
					3 NPT	349506B300TP			
					4 NPT	349506B400TM	\$ 965.40		

3495AS TAP SLEEVE W/THREADED OUTLET

Nominal Pipe Size		Letter Code	Pipe OD Range		Outlet Size	Part Number	List Price	Weight	
Inches	MM		Inches	MM				lbs	kgs
8	200	A	8.63	219	3/4 NPT	349508A075TC	\$ 887.50	31	14
					1 NPT	349508A100TE			
					1 1/4 NPT	349508A125TG			
					1 1/2 NPT	349508A150TI			
					2 NPT	349508A200TK			
					3 NPT	349508A300TP			
					4 NPT	349508A400TM	\$ 1,010.90	33	14
8	200	B	9.05	229	3/4 NPT	349508B075TC	\$ 887.50	31	14
					1 NPT	349508B100TE			
					1 1/4 NPT	349508B125TG			
					1 1/2 NPT	349508B150TI			
					2 NPT	349508B200TK			
					3 NPT	349508B300TP			
					4 NPT	349508B400TM	\$ 1,010.90	33	14
10	250	A	10.75	273	3/4 NPT	349510A075TC	\$ 936.30	38	17
					1 NPT	349510A100TE			
					1 1/4 NPT	349510A125TG			
					1 1/2 NPT	349510A150TI			
					2 NPT	349510A200TK			
					3 NPT	349510A300TP			
					4 NPT	349510A400TM	\$ 1,100.50	40	18
10	250	B	11.10	281	3/4 NPT	349510B075TC	\$ 936.30	38	17
					1 NPT	349510B100TE			
					1 1/4 NPT	349510B125TG			
					1 1/2 NPT	349510B150TI			
					2 NPT	349510B200TK			
					3 NPT	349510B300TP			
					4 NPT	349510B400TM	\$ 1,100.50	40	18
12	300	A	12.75	323	3/4 NPT	349512A075TC	\$ 990.00	48	21
					1 NPT	349512A100TE			
					1 1/4 NPT	349512A125TG			
					1 1/2 NPT	349512A150TI			
					2 NPT	349512A200TK			
					3 NPT	349512A300TP			
					4 NPT	349512A400TM	\$ 1,153.20	51	23
12	300	B	13.20	335	3/4 NPT	349512B075TC	\$ 990.00	48	21
					1 NPT	349512B100TE			
					1 1/4 NPT	349512B125TG			
					1 1/2 NPT	349512B150TI			
					2 NPT	349512B200TK			
					3 NPT	349512B300TP			
					4 NPT	349512B400TM	\$ 1,153.20	51	23

3495AS TAP SLEEVE W/THREADED OUTLET

Nominal Pipe Size		Letter Code	Pipe OD Range		Outlet Size	Part Number	List Price	Weight	
Inches	MM		Inches	MM				lbs	kgs
14	350	A	14.59-15.08	370-383	3/4 NPT	349514A075TC	\$ 1,163.20	54	24
					1 NPT	349514A100TE			
					1 1/4 NPT	349514A125TG			
					1 1/2 NPT	349514A150TI			
					2 NPT	349514A200TK			
					3 NPT	349514A300TP			
					4 NPT	349514A400TM	\$ 1,330.30		
14	350	B	15.23-15.80	386-401	3/4 NPT	349514B075TC	\$ 1,163.20	57	25
					1 NPT	349514B100TE			
					1 1/4 NPT	349514B125TG			
					1 1/2 NPT	349514B150TI			
					2 NPT	349514B200TK			
					3 NPT	349514B300TP			
					4 NPT	349514B400TM	\$ 1,330.30		
		C	16.30-16.70	414-424	3/4 NPT	349514C075TC	\$ 1,163.20	60	27
					1 NPT	349514C100TE			
					1 1/4 NPT	349514C125TG			
					1 1/2 NPT	349514C150TI			
					2 NPT	349514C200TK			
					3 NPT	349514C300TP			
					4 NPT	349514C400TM	\$ 1,330.30		
16	400	A	17.33-17.87	440-453	3/4 NPT	349516A075TC	\$ 1,214.90	64	29
					1 NPT	349516A100TE			
					1 1/4 NPT	349516A125TG			
					1 1/2 NPT	349516A150TI			
					2 NPT	349516A200TK			
					3 NPT	349516A300TP			
					4 NPT	349516A400TM	\$ 1,379.00		
		B	18.62-19.19	472-487	3/4 NPT	349516B075TC	\$ 1,214.90	68	30
					1 NPT	349516B100TE			
					1 1/4 NPT	349516B125TG			
					1 1/2 NPT	349516B150TI			
		B	18.62-19.19	472-487	2 NPT	349516B200TK	\$ 1,214.90	68	30
					3 NPT	349516B300TP			
					4 NPT	349516B400TM			

3495AS TAP SLEEVE W/THREADED OUTLET

Nominal Pipe Size		Letter Code	Pipe OD Range		Outlet Size	Part Number	List Price	Weight	
Inches	MM		Inches	MM				lbs	kgs
18	450	A	19.41-20.01	493-508	3/4 NPT	349518A075TC	\$ 1,264.60	72	32
					1 NPT	349518A100TE			
					1 1/4 NPT	349518A125TG			
					1 1/2 NPT	349518A150TI			
					2 NPT	349518A200TK			
					3 NPT	349518A300TP			
					4 NPT	349518A400TM			
		B	20.93-21.57	531-547	3/4 NPT	349518B075TC	\$ 1,264.60	77	34
					1 NPT	349518B100TE			
					1 1/4 NPT	349518B125TG			
					1 1/2 NPT	349518B150TI			
					2 NPT	349518B200TK			
					3 NPT	349518B300TP			
					4 NPT	349518B400TM			
20	500	A	21.51-22.15	546-562	3/4 NPT	349520A075TC	\$ 1,323.40	80	36
					1 NPT	349520A100TE			
					1 1/4 NPT	349520A125TG			
					1 1/2 NPT	349520A150TI			
					2 NPT	349520A200TK			
					3 NPT	349520A300TP			
					4 NPT	349520A400TM			
		B	23.46-24.16	595-613	3/4 NPT	349520B075TC	\$ 1,323.40	87	39
					1 NPT	349520B100TE			
					1 1/4 NPT	349520B125TG			
					1 1/2 NPT	349520B150TI			
					2 NPT	349520B200TK			
					3 NPT	349520B300TP			
					4 NPT	349520B400TM			
24	600	A	25.71-26.41	653-670	3/4 NPT	349524A075TC	\$ 1,432.80	95	43
					1 NPT	349524A100TE			
					1 1/4 NPT	349524A125TG			
					1 1/2 NPT	349524A150TI			
					2 NPT	349524A200TK			
					3 NPT	349524A300TP			
					4 NPT	349524A400TM			
		B	28.14-28.84	714- 732	3/4 NPT	349524B075TC	\$ 1,432.80	104	47
					1 NPT	349524B100TE			
					1 1/4 NPT	349524B125TG			
					1 1/2 NPT	349524B150TI			
					2 NPT	349524B200TK			
					3 NPT	349524B300TP			
					4 NPT	349524B400TM			
					\$ 1,596.00				

3495AS TAP SLEEVE W/THREADED OUTLET

Nominal Pipe Size		Letter Code	Pipe OD Range		Outlet Size	Part Number	List Price	Weight	
Inches	MM		Inches	MM				lbs	kgs
30	750	A	31.52-32.22	800-818	3/4 NPT	349530A075TC	\$ 1,553.20	115	52
					1 NPT	349530A100TE			
					1 1/4 NPT	349530A125TG			
					1 1/2 NPT	349530A150TI			
					2 NPT	349530A200TK			
					3 NPT	349530A300TP			
					4 NPT	349530A400TM	\$ 1,719.40		
36	900	A	38.10-38.75	967-984	3/4 NPT	349536A075TC	\$ 1,711.40	139	63
					1 NPT	349536A100TE			
					1 1/4 NPT	349536A125TG			
					1 1/2 NPT	349536A150TI			
					2 NPT	349536A200TK			
					3 NPT	349536A300TP			
					4 NPT	349536A400TM	\$ 1,880.60		
42	1050	A	44.10-44.70	1120-1135	3/4 NPT	349542A075TC	\$ 1,854.70	160	72
					1 NPT	349542A100TE			
					1 1/4 NPT	349542A125TG			
					1 1/2 NPT	349542A150TI			
					2 NPT	349542A200TK			
					3 NPT	349542A300TP			
					4 NPT	349542A400TM	\$ 2,022.80		
48	1200	A	50.40-51.00	1280-1295	3/4 NPT	349548A075TC	\$ 2,371.00	183	83
					1 NPT	349548A100TE			
					1 1/4 NPT	349548A125TG			
					1 1/2 NPT	349548A150TI			
					2 NPT	349548A200TK			
					3 NPT	349548A300TP			
					4 NPT	349548A400TM	\$ 2,720.30		
54	1650	A	56.60-57.25	1437-1454	3/4 NPT	349554A075TC	\$ 2,552.20	205	92
					1 NPT	349554A100TE			
					1 1/4 NPT	349554A125TG			
					1 1/2 NPT	349554A150TI			
					2 NPT	349554A200TK			
					3 NPT	349554A300TP			
					4 NPT	349554A400TM	\$ 2,720.30		

CUSTOM SIZES AVAILABLE.

Other options: CC thread configurations. All 316 Stainless Steel material also an option. (Additional charges apply)

HOW TO ORDER: Choose the Pipe Size Letter Code corresponding to a Pipe OD Range that covers the Pipe OD to be tapped and then specify the desired Outlet size. EXAMPLE: 16" Asbestos-Cement Class 150 O.D. 18.72 with 1" NPT Threaded Outlet . Order 3495AS-16B x 1 NPT. **Part Number:** 349516B100TE