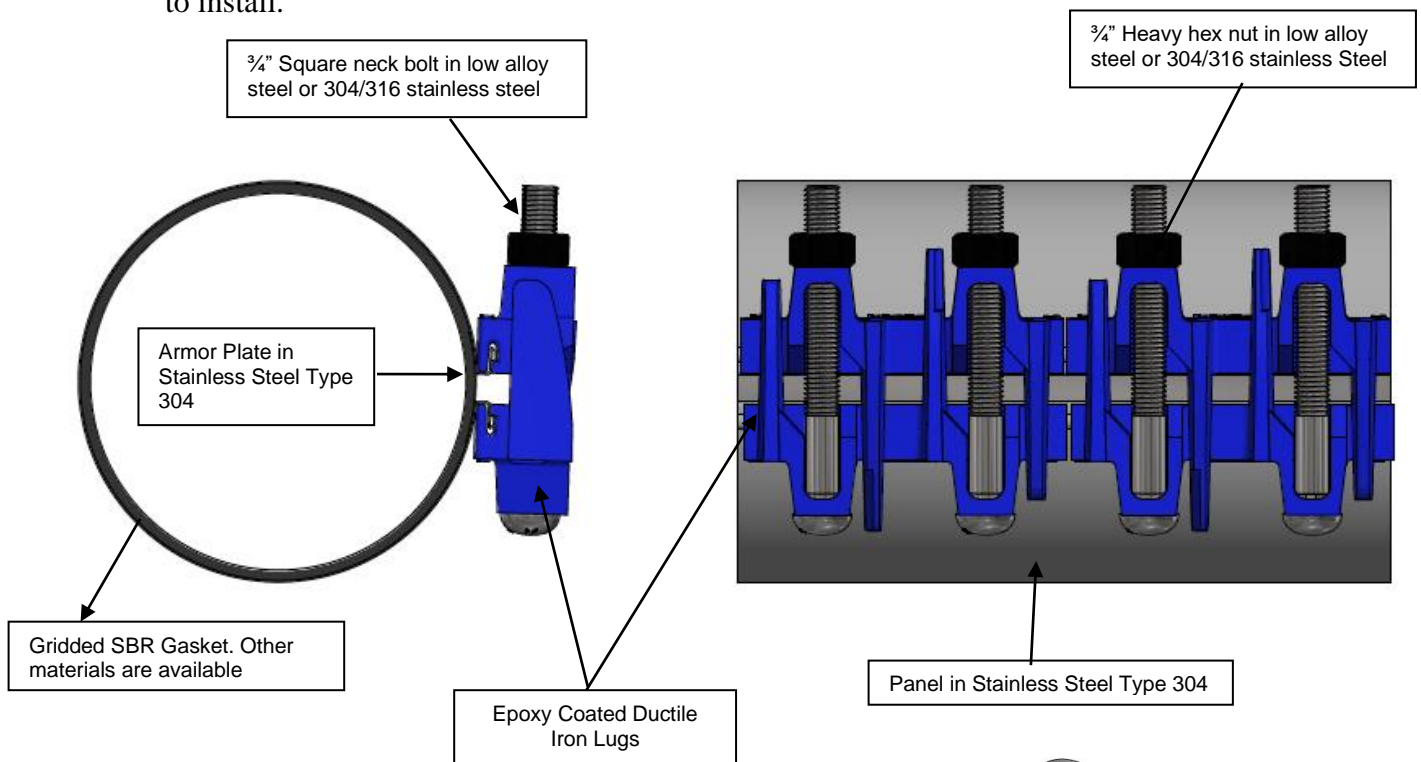
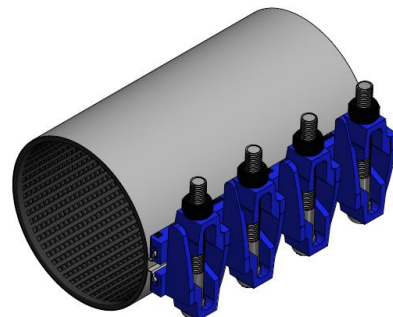


### Features and Benefits

1. Materials do not compromise the integrity of the pipeline.
2. Captive bolt design makes installation easy and eliminates loose pieces in the field.
3. Due to stainless steel panel construction clamps are manufactured in range to fit any pipe diameter.
4. Clamps are available with NPT or AWWA (CC) tapped outlets ½” - 3” for repairing damaged service connections.
5. Gasket design makes sealing on pitted or corroded pipe possible and lessens bolt torque required to attain leak stoppage.
6. Heavy hex nut with fusion bonded coating to prevent seizing and galling.
7. Ductile Iron Lugs with drop in bolt design are easily **removable in the field**, making possible installations on pipe that has other pipes or conduits laid too close.
8. The benefits of the clamp with now welding parts, keeping the product flexible and easy to install.



\*The pressure rating depends on the installation and the extent of damage of the pipe as well as the condition of the pipe.





**Scope**

The intent of this specification is to receive 4” and up diameter stainless steel repair clamps capable of repairing leaks in all pressure classes of steel, cast and ductile iron, PVC, and asbestos cement pipes. The repair clamp furnished shall be equivalent to Model 3121 HD as manufactured by PowerSeal Pipeline Products Corporation.

**Design and Material Specification**

The full circle repair clamp shall meet or exceed all material specifications as listed below:

1. The exterior band of the repair clamp shall be type 304 (18-8) stainless steel. Other materials available.
2. The repair clamp shall have a complete circle gasket permanently attached to the panel at the factory.  
 The complete circle gasket shall be our gridded design in SBR. It shall be free from porous areas, foreign material, and visible defects, all made from 100% new rubber. The SBR resists temperatures of -40 to +200°F. The armor plate shall be made of stainless steel. It shall be recessed and vulcanized into the gasket. Other materials are available.
3. Fusion bonded epoxy coated lugs shall be ductile iron and must be easily removable in the field.
4. There shall be no paper or plastic adhesive labels attached to the repair clamp, any information appearing on the clamps shall be stenciled.
5. Fully complies with AWWA C800 and NSF 61.

Material Specifications		
Part Name	Material	Mat. specs
Panel	Stainless Steel type 304	ASTM A240
Armor Plate	Stainless Steel type 304	ASTM A240
Lugs	Ductile Iron	ASTM A536
Bolts	¾” Low Alloy Steel	ASTM A325
	¾” Stainless Steel 304/316	ASTM A193
Nuts	¾” Low Alloy Steel	ASTM A563
	¾” Stainless Steel 304/316	ASTM A194
Gasket	SBR	ASTM D2000
Lugs Finish	Epoxy Coated	AWWA C210

