

# OUTLET AVAILABLE FOR REPAIR CLAMPS

## 3121, 3122, 3121AS, 3122AS

All repair clamps build with 304 stainless steel outlet and shall be passivated so as to return the welded stainless steel to its original corrosion resistant state

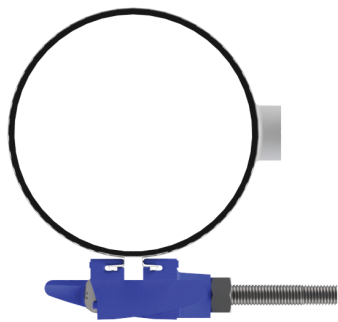
To add-on a Tapped Outlet to a Repair Clamp, change the model number as noted above and specify the Tapped Clamp, Outlet Size and Thread Type. Combine the Clamp and Outlet List Prices for a total price. Example: 3121 6C X 12 Tapped Clamp with a 3/4"CC Outlet. Order 3131-6C X 12 X 3/4CC. Part Number: 313106C120AB

### REPAIR CLAMPS TAPPED OUTLET ADD-ON LIST PRICES

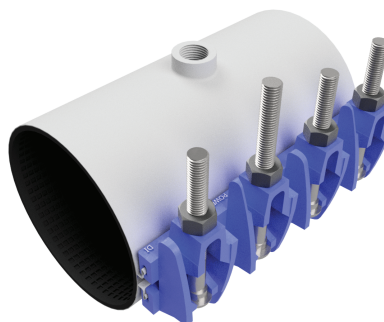
Outlet Size	Thread Type	Add-On List Price	End Code	Minimum Pipe OD	Minimum Clamp Length
3/4"	CC (AWWA)	\$ 63.50	B	2.38"	6"
1"	CC (AWWA)	\$ 63.50	D	2.38"	6"
1 1/4"	CC (AWWA)	\$ 84.70	F	2.88"	8"
1 1/2"	CC (AWWA)	\$ 84.70	H	3.50"	8"
2"	CC (AWWA)	\$ 104.80	J	4.50"	8"
3/4"	IP (NPT)	\$ 63.50	C	2.38"	6"
1"	IP (NPT)	\$ 63.50	E	2.38"	6"
1 1/4"	IP (NPT)	\$ 84.70	G	2.88"	8"
1 1/2"	IP (NPT)	\$ 84.70	I	3.50"	8"
2"	IP (NPT)	\$ 104.80	K	3.50"	8"
3"	IP (NPT)	\$ 265.20	O	6.63"	12"



3121



3131



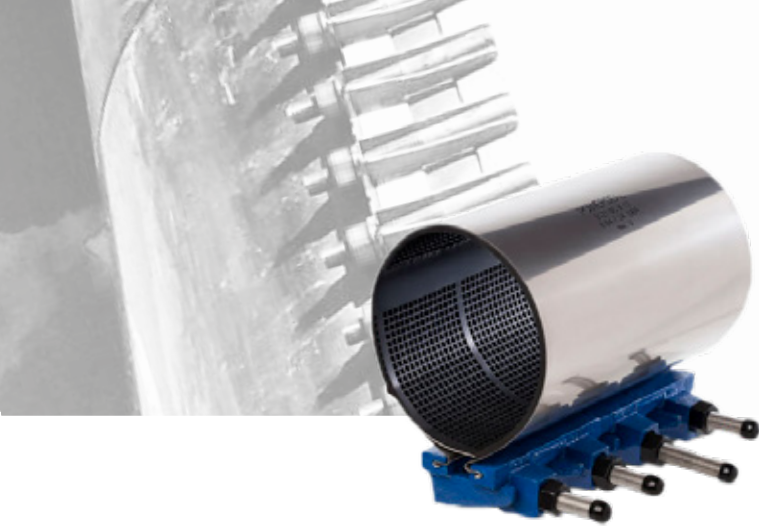
Model Number	
Repair Clamp	Tapped Clamp
3121	3131
3122	3132
3121AS	3131AS
3122AS	3132AS

### REPAIR CLAMPS ADD-ON LIST PRICES

Component Description	Part Number	Product Size	List Price	Unit
Fluoro-coat bolt and nut list add on (5/8")	-8	All sizes	\$ 4.20	Per Bolt
Electrical Conductivity Buttons	-3	8 - 16" Width	\$ 45.60	Per Clamp
Electrical Conductivity Buttons	-3	20 - 36"	\$ 55.50	Per Clamp
Never Gall bolt and nut list add on (5/8")	-NG	All sizes	\$7.70	Per bolt

How to order: Add part number -3 at end of part number. Example: 312106C120AA-SB3

# IRON LUG SINGLE PANEL 3121



REPAIR CLAMPS

**PANEL:** Type 304 (18-8) Stainless Steel per ASTM A240.  
**GASKET:** SBR Chek-O-Seal with multi o-ring sealing ribs from 100% new rubber to ensure performance under varying pressures with superior storage characteristics. Suitable for mild acids, water and salt media with a temperature range of -40°F to +200°F per ASTM D2000 . Other materials available.  
**ARMOR PLATE:** Type 304 (18-8) Stainless Steel per ASTM A240, recessed and bonded to the gasket.  
**BOLTS & NUTS:** Low Alloy Steel per ASTM A325, ASTM A563, and AWWA C111  
**LUGS:** Ductile Iron per ASTM A536.



**MEETS  
AWWA  
C230**

Nominal Pipe Size			Pipe OD Range		Part Number	Width / List price						
Inches	MM	Letter	Inches	MM		8	10	12	16	20	24	30
1 1/4	26	-	1.66	42	3121012 + Width + OAA-SB	\$179.00	\$266.90	\$300.50	\$362.80	P.O.A	P.O.A	P.O.A
1 1/2	38	-	1.88 - 1.92	48 - 49	3121015 + Width + OAA-SB	\$179.00	\$266.90	\$300.50	\$362.80	P.O.A	P.O.A	P.O.A
2	50	-	2.35 - 2.63	60 - 67	3121020 + Width + OAA-SB	\$179.00	\$266.90	\$300.50	\$362.80	P.O.A	P.O.A	P.O.A
2 1/2	63	-	2.70 - 3.00	69 - 77	3121025 + Width + OAA-SB	\$194.20	\$287.40	\$334.20	\$391.00	P.O.A	P.O.A	P.O.A
3	75	A	2.97 - 3.25	75 - 83	312103+Letter+Width+OAA-SB	\$217.50	\$311.00	\$362.60	\$431.90	P.O.A	P.O.A	P.O.A
		B	3.46 - 3.70	88 - 94								
		C	3.73 - 4.00	95 - 102								
		D	3.96 - 4.25	101 - 108								
4	100	A	4.45 - 4.73	113 - 120	312104+Letter+Width+OAA-SB	\$234.60	\$324.00	\$395.50	\$463.70	\$622.90	\$782.10	\$941.20
		B	4.74 - 5.14	120 - 131								
		C	4.95 - 5.35	126 - 136								
		D	5.22 - 5.62	133 - 143								
6	150	A	5.95 - 6.35	151 - 161	312106+Letter+Width+OAA-SB	\$276.90	\$375.50	\$442.80	\$527.30	\$745.60	\$909.40	\$1,086.33
		B	6.56 - 6.96	167 - 177								
		C	6.84 - 7.24	174 - 184								
		D	7.05 - 7.45	179 - 189								
		E	7.45 - 7.85	189 - 199								
8	200	A	7.95 - 8.35	202 - 212	312108+Letter+Width+OAA-SB	\$325.00	\$430.20	\$520.60	\$631.70	\$859.20	\$1,027.50	\$1,209.40
		B	8.54 - 8.94	217 - 227								
		C	8.99 - 9.39	228 - 239								
		D	9.27 - 9.67	235 - 246								
10	250	A	9.70 - 10.10	246 - 257	312110+Letter+Width+OAA-SB	\$427.40	\$577.40	\$663.80	\$836.50	\$1,118.40	\$1,255.00	\$1,227.90
		B	10.64 - 11.04	270 - 280								
		C	11.04 - 11.44	280 - 291								
		D	11.34 - 11.74	288 - 298								
		E	11.75 - 12.15	298 - 309								
12	300	A	12.00 - 12.40	305 - 315	312112+Letter+Width+OAA-SB	\$481.90	\$641.10	\$772.90	\$963.90	\$1,273.00	\$1,486.90	\$1,927.70
		B	12.62 - 13.02	321 - 331								
		C	13.10 - 13.50	333 - 343								
		D	13.40 - 13.80	340 - 351								
		E	13.70 - 14.10	348 - 358								
		F	14.00 - 14.40	356 - 366								

**HOW TO ORDER:** Specify Model Number, Pipe Size with Letter Code, and Width. **EXAMPLE:** 6" Cast Iron O.D. 6.90 with 12" Clamp Width. Order 3121 - 6C X 12. **Part Number:** 312106 + Letter + Width + OAA-SB = 312106C120AA-SB.