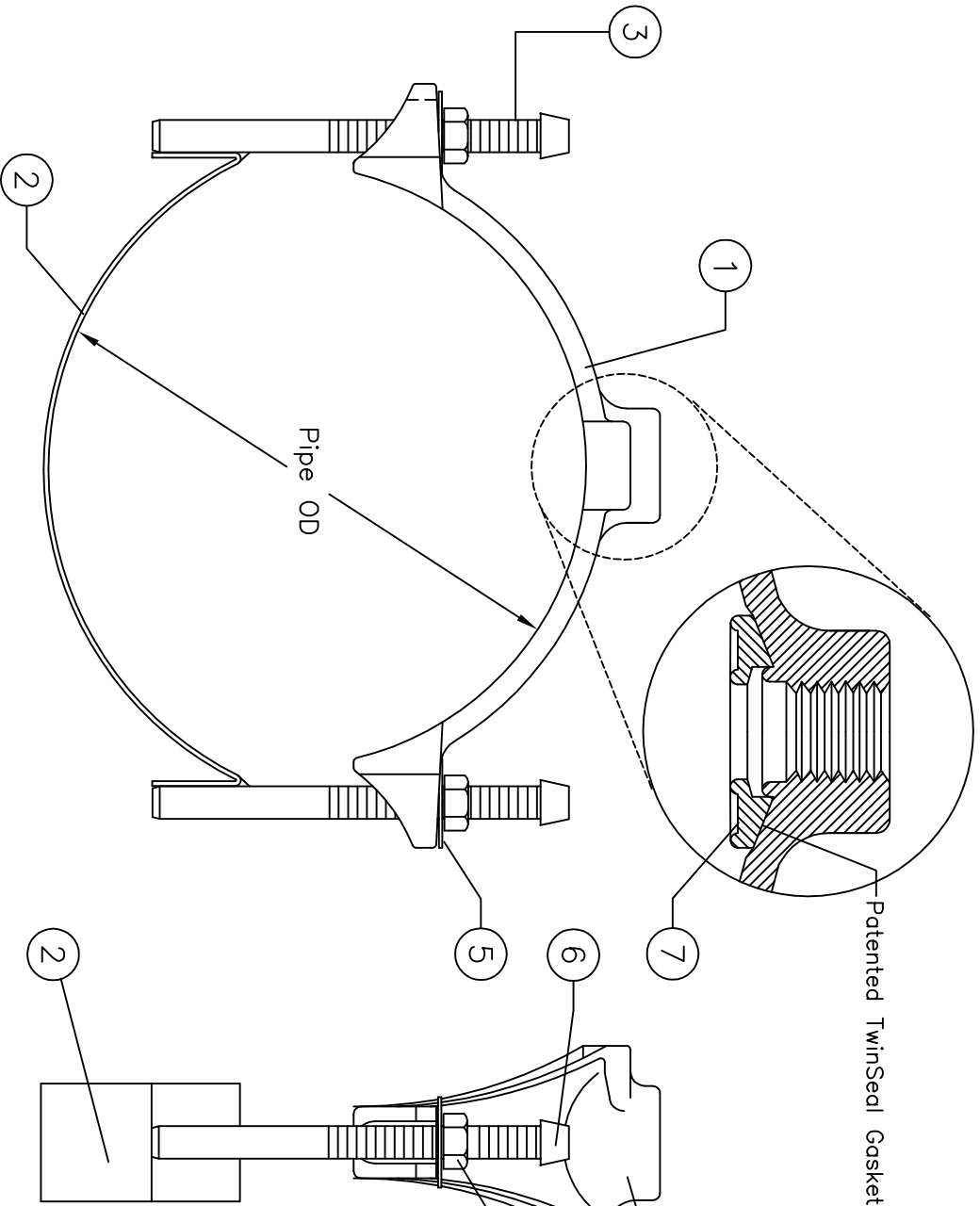


# Reference: 3415DI Ductile Iron Saddle - Single Strap



ASSEMBLY BILL OF MATERIALS				
ITEM	QTY	PART NAME	MATERIAL	MAT. SPEC.
1	1	Saddle	Ductile Iron	ASTM A536
2	1	Strap	Stainless Steel Type 304	ASTM A240
3	2	Bolt	Stainless Steel Type 304	ASTM A193
4	2	Heavy-Hex Nut	Stainless Steel Type 304	ASTM A193
5	2	Washer	Stainless Steel Type 304	ASTM A240
6	2	Thread Cap	Plastic	701-89 Black
7	1	Gasket *	Nitrile (NBR)	ASTM D2000

Finish: Epoxy-Polyester

\* Patented TwinSeal

Working Pressure: 150PSI  
Test Pressure: 225PSI

Nominal Size	Range
1	1.31-1.39
1.25-1.50	1.61-1.92
2	2.13
2	2.38
2	2.35-2.56
2.25-2.50	2.44-2.91
3	2.97-3.54
3-4	3.74-4.55
4-5	4.74-5.63
5-6	5.94-6.70
6	6.84-7.60
6-8	7.69-8.72
8-10	8.54-10.10
10-12	10.64-12.12
12-14	12.62-14.32

THIS DRAWING AND ALL INFORMATION THEREON IS THE PROPERTY OF PAM, LTD. AND SHALL NOT BE USED, COPIED, OR REPRODUCED WITHOUT WRITTEN CONSENT. ALL DESIGN AND INVENTION RIGHTS ARE RESERVED.

TITLE		P.O. Box 2014 Wichita Falls, Texas	
PowerSeal		Model 3415DI	
SIZE	DRAFTSMAN	DATE	APPROVAL
B	EHK	5/92	
SCALE	NTS	SUPERSIZES	BSS112
SHEET 1		OF 1	
DRAWING NO.		REV	
EAB-1112			