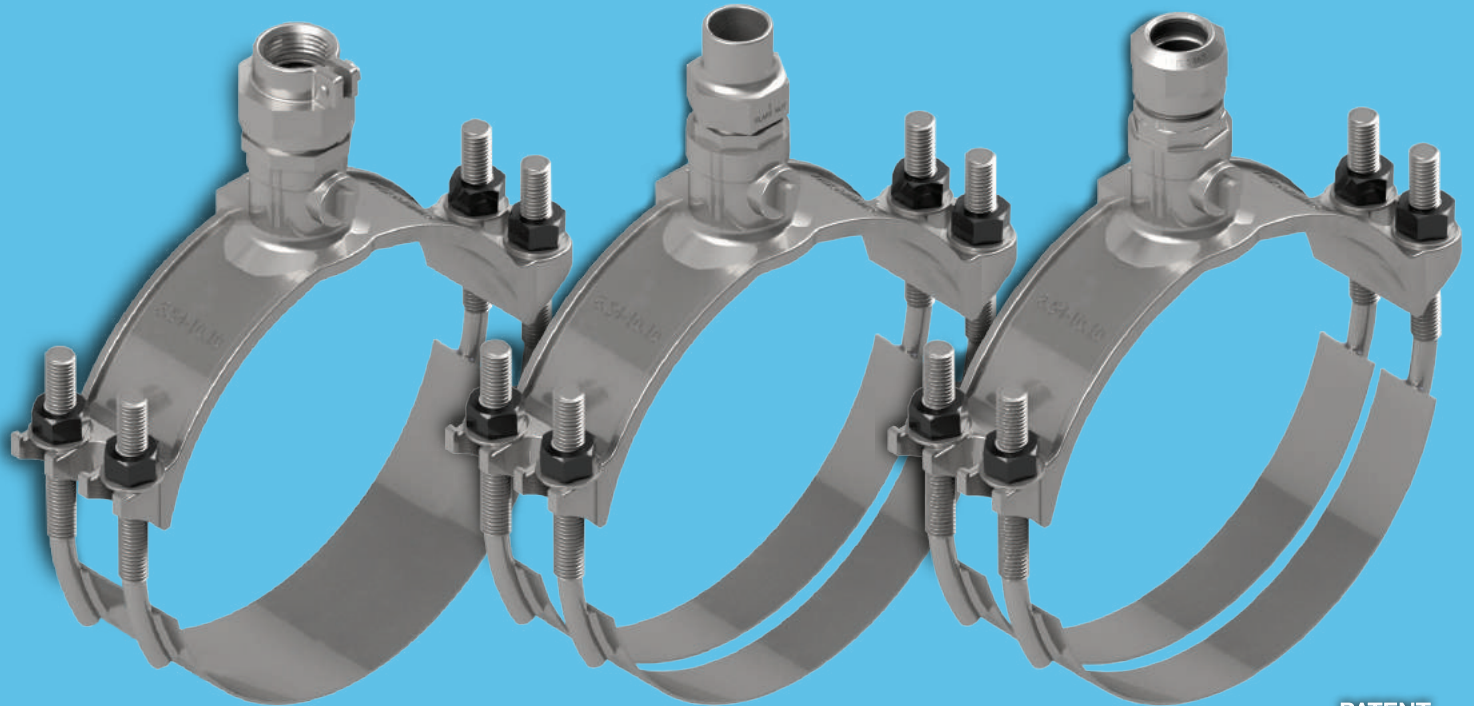
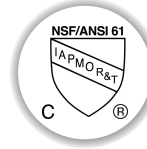




3450AS

ALL STAINLESS STEEL SADDLECORP

PowerJoint, Pack Joint and Flare are available in 3/4", 1", 1-1/2" & 2".



Model 3450AS - Pack Joint

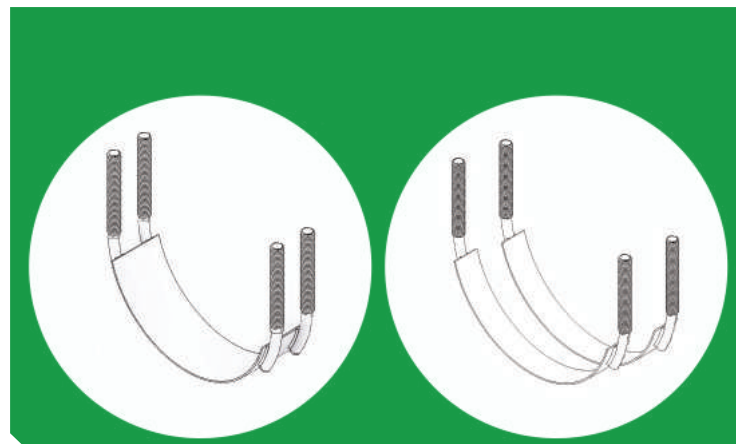
Model 3450AS - Flare

Model 3450AS - PowerJoint

**PATENT
PENDING**

VALVE & SADDLE SOLID ONE PIECE CASTING

- Available for CTS Pack joint and PowerJoint (compare to Quick Joint), IPS Pack Joint and FLARE.
- Ball valve design for maximum pressure capability.
- Patented TwinSeal gasket design.
- UL tested.
- Certified by IAPMO R&T to NSF/ANSI 61 for materials safety only, and to NSF/ANSI 372 for low lead compliance.
- Eliminates vulnerable epoxy coatings.
- For use on PVC, Ductile/Cast iron and AC pipe.
- One piece casting design combines corp stop and saddle.
- Reduce inventory and purchasing consolidation.
- Limits potential threading issues in the field.
- Meets or exceeds the requirements of AWWA C800.



Available with double or single strap

3 - 2021

1-800-800-0932

www.powerseal.com • 701 Pleasant View Drive Wichita Falls, TX 76306 • 940-767-5566 fax: 940-723-8378

FITTING SOLUTIONS FOR HARSH ENVIRONMENTS

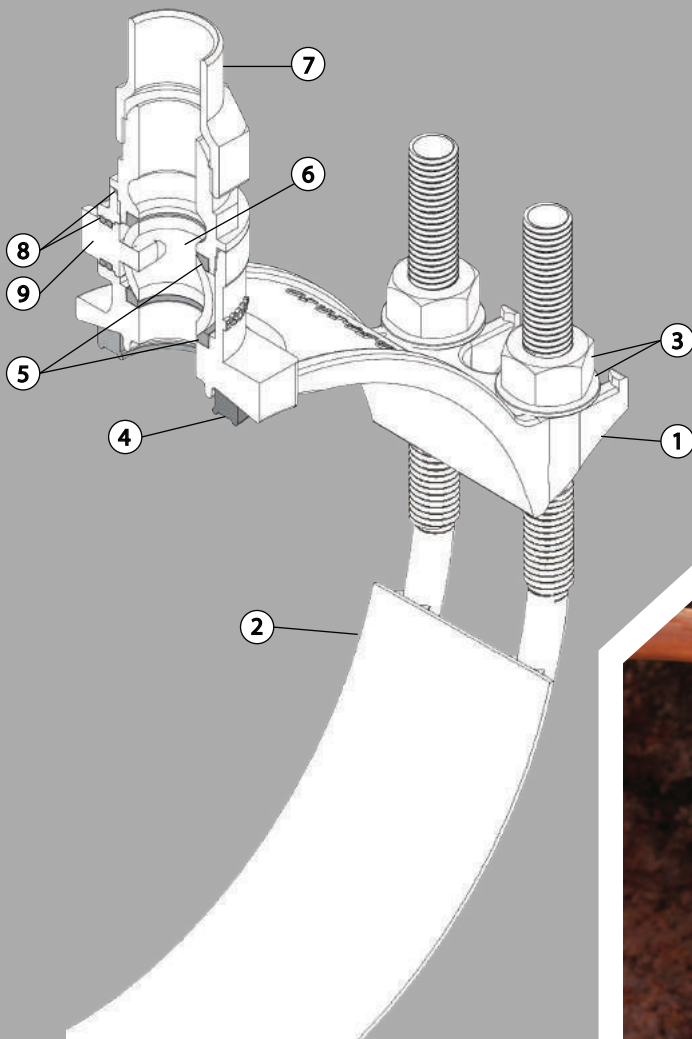


COMPONENT REFERENCE

MATERIAL SPECIFICATIONS

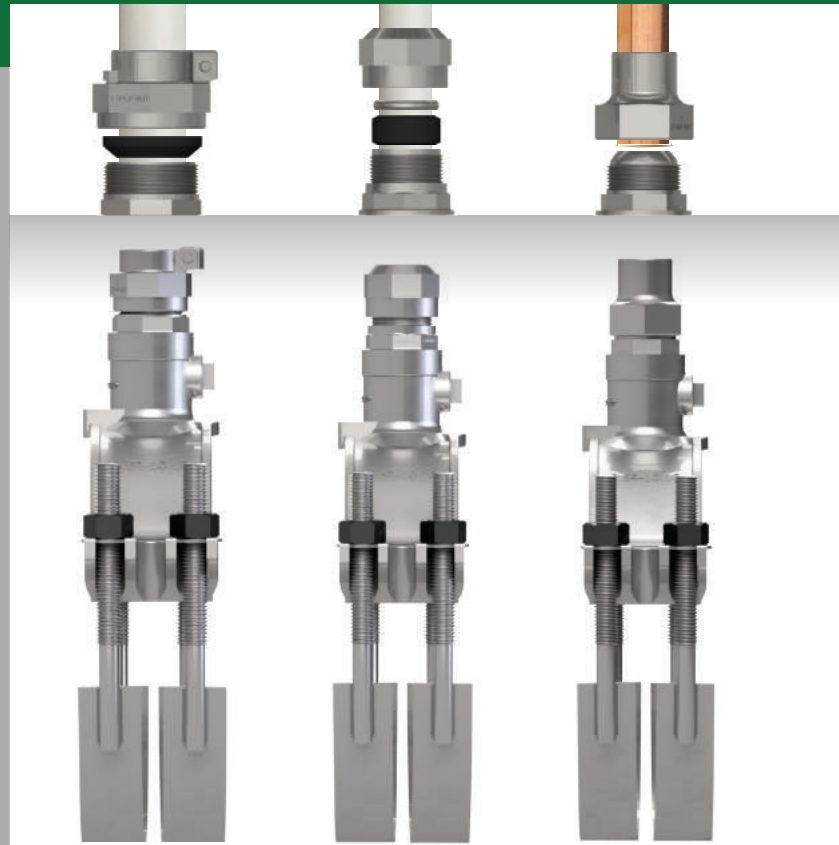
ASSEMBLY BILL OF MATERIALS

ITEM	PART NUM	MATERIAL	MAT. SPEC.
1	Saddle Top	Stainless Steel 18-8 (CF8)	ASTM A703
2	Strap	Stainless Steel type 304	ASTM A240
3	Nut & Washer	Stainless Steel type 304	ASTM A193
4	TwinSeal Gasket	NBR	ASTM D2000
5	Ball Gasket	NBR	ASTM D2000
6	Ball	Stainless Steel 18-8 (CF8)	ASTM A703
7	Adapter	Stainless Steel 18-8 (CF8)	ASTM A703
8	O-rings	NBR	ASTM D2000
9	Key	Stainless Steel 18-8 (CF8)	ASTM A703



Available with double or single strap

SADDLECORP ADAPTERS



Pack joint - IPS/CTS

PowerJoint - CTS

Flare

1-800-800-0932

www.powerseal.com • 940-767-5566 fax: 940-723-8378
701 Pleasant View Drive, Wichita Falls, TX 76306

