

# 3460AS

## STAINLESS STEEL TAPPING SLEEVE (HIGH PRESSURE)

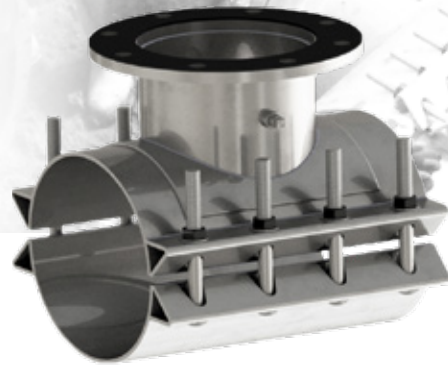
**USE:** Faster, economical and simple method to connect valve to existing or new lines under pressure.

**BRANCH GASKET:** NBR per ASTM D2000.

**PANEL:** Type 304 (18-8) Stainless Steel per ASTM A240

**BOLTS & NUTS:** Type 304 (18-8) Stainless Steel per ASTM A193 and A194. **NOTE:** Stainless Steel hex nuts are furnished with fusion bonded coating to prevent seizing and galling.

**OUTLET:** Type 304 (18-8) Stainless Steel per ANSI 21.11.



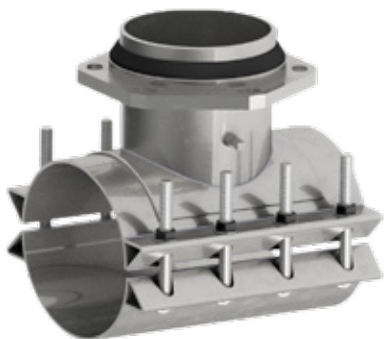
Nominal Pipe Size		Pipe OD Range		Branch Size		Part number	List Price	
In	MM	Letter	Inches	MM	Inches			MM
4	100	A*	4.50	114	4	100	3460+Nominal pipe size+Letter +Branch size+ AS-HP	
		B	4.80	122				
6	150	A*	6.56-6.69	167-170	4	100		\$3,763.30
		B	6.83-7.16	173-182		6		150
		C	7.05-7.40	179-188	8			200
		D	7.40-7.73	188-196		250		\$5,485.10
8	200	A*	7.80-8.16	198-207	4	100		\$4,426.10
		B	8.53-8.72	217-221		6		150
		C	8.98-9.37	228-238	8			200
		D	9.27-9.69	235-246		250		\$8,357.10
10	250	A*	9.83-10.25	250-260	4	100		\$4,485.50
		B	10.64-10.86	270-276		6		150
		C	11.03-11.47	280-291	8			200
		D	11.36-11.80	289-300		10		250
		E	11.76-12.24	299-311	300			\$10,971.60
12	300	A*	12.62-12.88	321-327	4	100		\$5,568.80
		B	13.13-13.60	334-345		6		150
		C	13.60-14.09	345-358	8			200
		D	14.09-14.56	358-370		10	250	\$11,035.60
					300		\$11,899.30	
14	350	A	14.59-15.08	371-383	4	100	\$5,952.80	
		B	15.23-15.80	387-401		6	150	\$6,542.40
		C	15.73-16.22	400-412	8		200	\$8,878.10
		D	16.30-16.73	414-425		10	250	\$11,319.00
					300		\$12,114.50	
16	400	A	16.74-17.26	425-438	4	100	\$6,053.40	
		B	17.33-17.87	440-454		6	150	\$6,670.40
		C	17.88-18.43	473-487	8		200	\$9,070.10
		D	18.62-19.19	454-468		10	250	\$11,359.90
					300		\$12,241.00	
18	450	A	18.87-19.45	479-494	4	100	\$6,053.40	
		B	19.41-20.01	493-508		6	150	\$6,670.40
		C	20.00-20.60	508-523	8		200	\$9,070.10
		D	20.29-20.94	515-532		10	250	\$11,359.90
		E	20.93-21.57	532-548	300		\$12,241.00	

Nominal Pipe Size			Pipe OD Range		Branch Size		Part number	List Price
In	MM	Letter	Inches	MM	Inches	MM		
20	500	A	21.57-22.15	546-563	4	100	3460+Nominal pipe size+Letter +Branch size+ AS-HP	\$6,263.60
		B	22.16-22.81	563-579		150		\$6,925.70
		C	22.78-23.45	579-596		200		\$9,408.40
		D	23.46-24.16	596-614		250		\$11,407.90
		E	24.15-24.85	613-631		300		\$12,243.80
		F	24.82-25.52	630-648				
24	600	A	25.71-26.41	653-671	4	100		\$6,711.60
		B	26.55-27.25	674-692	6	150		\$7,219.20
		C	27.26-27.96	692-710	8	200		\$10,048.30
		D	28.14-28.84	715-733	10	250		\$11,416.20
					12	300		\$12,416.60
30	750	A	29.78-30.48	756-774	4	100		\$8,497.10
		B	30.48-31.18	774-792	6	150	\$9,493.40	
					8	200	\$10,471.60	
					10	250	\$11,486.00	
					12	300	\$12,482.30	
					C	31.52-32.22	801-818	

**CUSTOM SIZES AVAILABLE.**

\* Size on size not available

**HOW TO ORDER:** Choose the Pipe Size Letter Code corresponding to a Pipe OD Range that covers the Pipe OD to be tapped and then specify the desired branch size. **EXAMPLE:** 16" Asbestos-Cement Class 150 O.D. 18.72 with 8 inch Branch size and alloy bolts. Order 3460AS - 16D x 8. **Part Number:** 3460+Nominal pipe size+Letter+Branch size+ AS-HP = 346016D080AS-HP .For Outlet Sizes 14" and above the tapping valve being used must be advised to PowerSeal in order to guarantee proper alignment recess mating.



# 3460AS-MJ

## STAINLESS STEEL TAPPING SLEEVE W/MECHANICAL JOINT OUTLET

**USE:** Faster, economical and simple method to connect valve to existing or new lines under pressure.

**BRANCH:** NBR per ASTM D2000.

**PANEL:** Type 304 (18-8) Stainless Steel per ASTM A240

**BOLTS & NUTS:** Type 304 (18-8) Stainless Steel per ASTM A193 and A194. **NOTE:** Stainless Steel hex nuts are furnished with fusion bonded coating to prevent seizing and galling.

**OUTLET:** Type 304 (18-8) Stainless Steel per ANSI 21.11.



Nominal Pipe Size			Pipe OD Range		Branch Size		Part number	List Price
In	MM	Letter	Inches	MM	Inches	MM		
4	100	A	4.50	114	4	100	3460+Nominal pipe size+Letter +Branch size+ MJ-HP	\$4,013.30
		B	4.80	122				
6	150	A	6.56-6.69	167-170	4	100		
		B	6.83-7.16	173-182				
		C	7.05-7.40	179-188				
		D	7.40-7.73	188-196				
					6	150	\$4,729.50	