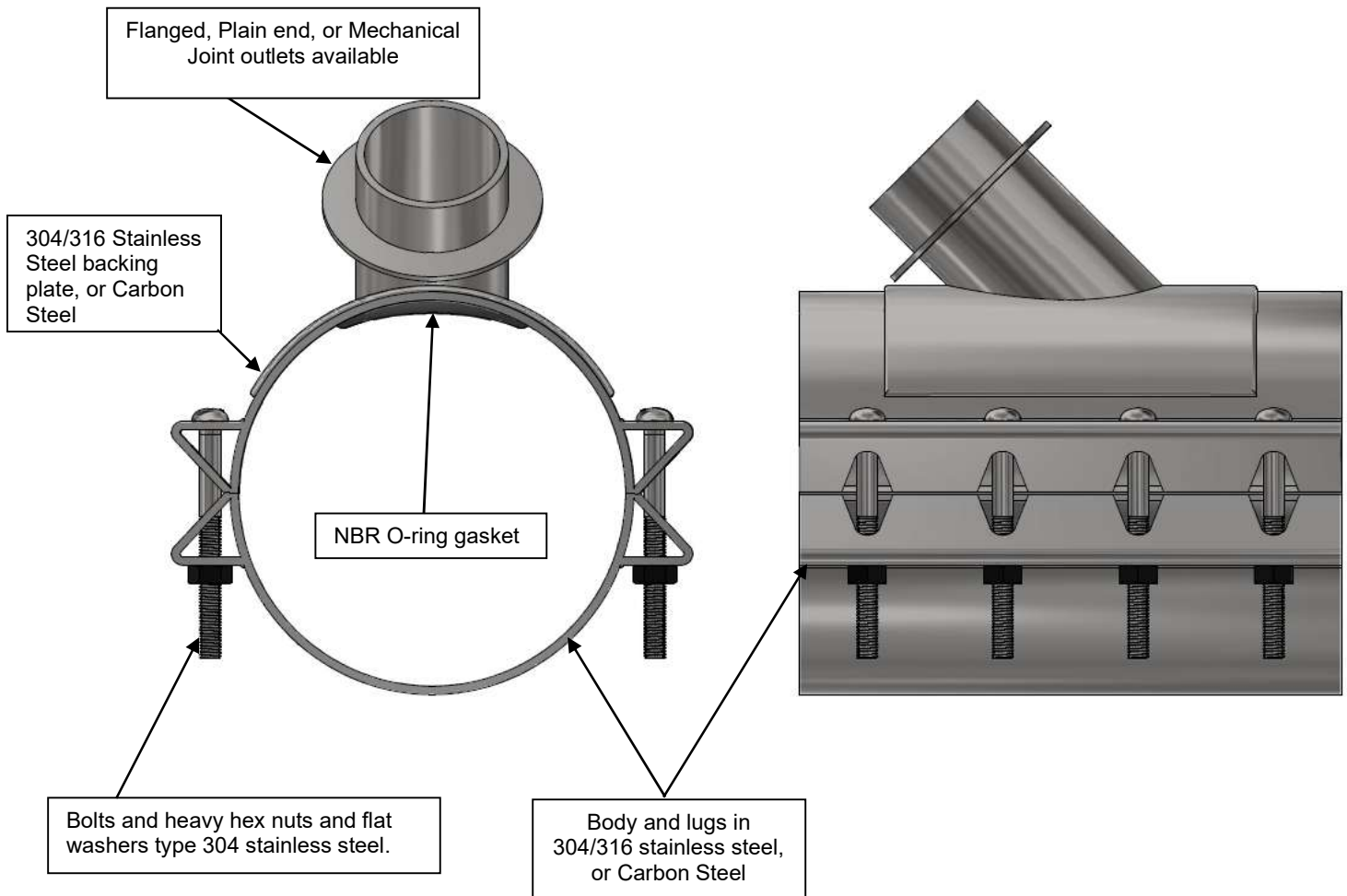


Features and Benefits

1. The complete tapping wye is made from stainless steel type 304 or 316, or epoxy coated carbon steel, and all the welding shall be passivated so as to return the welded stainless steel to its original corrosion resistant state.
2. The tapping wye shall be rated for a minimum working pressure of 250 psi for nominal sizes up through and including 24 x 8.
3. Built in range allows reduction of inventory.
4. “Drop-in” track head bolts allow assembly in either direction.
5. Different outlet connections are available. I.E. Flanged, plain end, mechanical joint.



Scope

The intent of this specification is to receive a high pressure rated Stainless Steel Tapping Sleeve. The tapping wye furnished shall be equivalent to Model 3460-WYE Tapping Wye as manufactured by PowerSeal Pipeline Products Corporation.

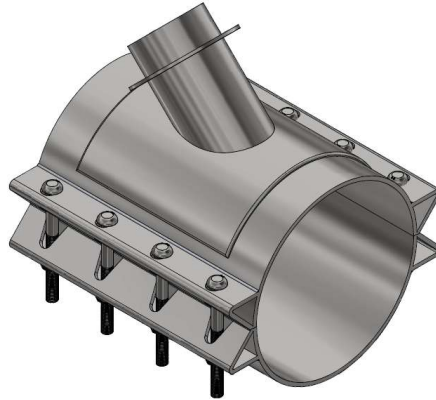
Design and Material Specification

- The tapping sleeve shall meet or exceed all material specifications as listed below:
 1. The tapping sleeve shall have a branch sealing o-ring gasket all permanently attached to the sleeve at the factory.
The branch sealing gasket shall be an o-ring in NBR (-25F° - +248F°) rubber.
 2. The tapping wye shall incorporate drop-in, oval-neck track-head bolts in stainless steel.
 3. The branch shall be a minimum of 3/8" larger diameter than nominal to allow the use of a full size cutter.
 4. Branch to flange and branch to shell connections are double welded. Outer structural weld GMAW (FCAW) and inner fusion weld GTAW (TIG).
 5. Lugs shall be structurally welded GMAW (FCAW) to the shell and the test outlet shall be fusion welded GTAW (TIG) to the branch.
 6. There shall be no paper or plastic adhesive labels on the tapping wye.

3460-WYE
SEWER TAPPING WYE ALL STAINLESS
Certified to NSF/ANSI-61



Model 3460-WYE



Material Specifications		
Part Name	Material	Mat. specs
Flange	Stainless Steel 304/316/Carbon Steel	AWWA C115
Branch	Stainless Steel 304/316 Stainless Steel 304/316/Carbon Steel	ASTM A240/A36
Shell	Stainless Steel 304/316/Carbon Steel	ASTM A240/A36
Bolt Lug	Stainless Steel 304/316/Carbon Steel	ASTM A240/A36
Branch O-ring	NBR	ASTM D2000
Bolts	Stainless Steel 304/316	ASTM A193
Nuts	Stainless Steel 304/316	ASTM A194
Washers	Stainless Steel 304/316	ANSI B18.22.1
Back up plate	Stainless Steel 304/316/Carbon Steel	ASTM A240/A36