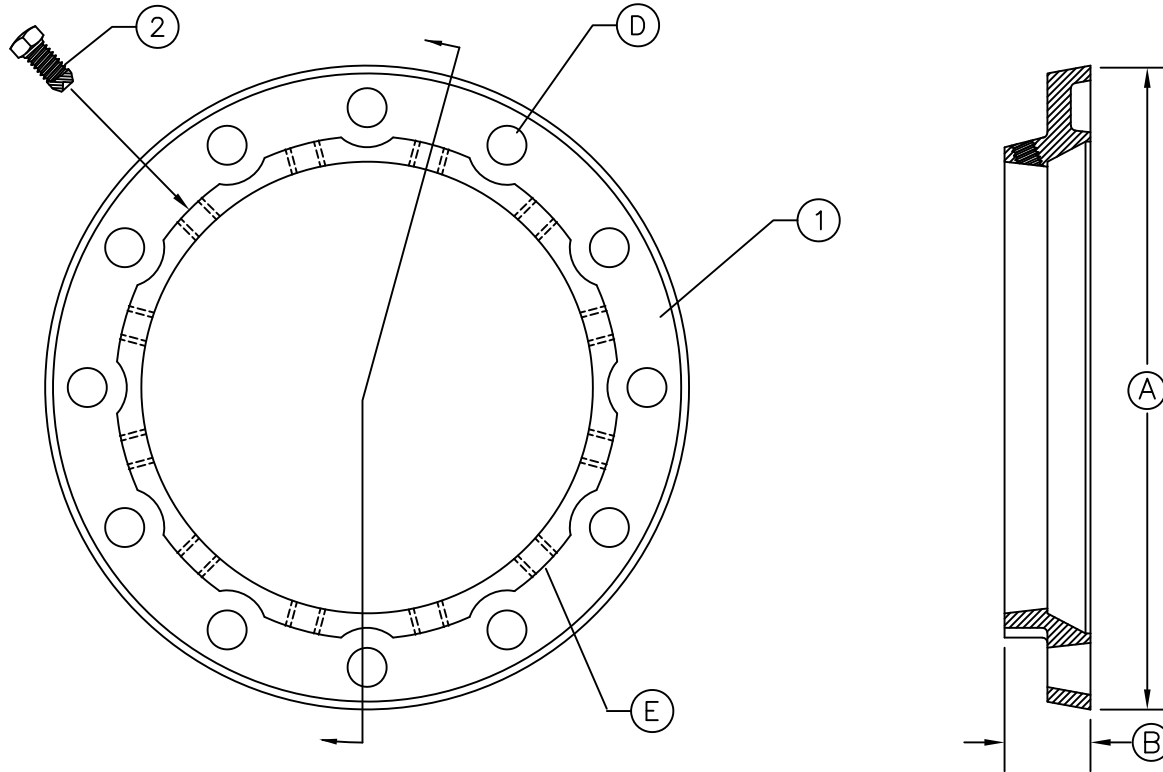


Reference: **Ductile Iron InstaFlange Flange Adapter**



ASSEMBLY BILL OF MATERIALS				
ITEM	QTY	PART NAME	MATERIAL	MAT. SPEC.
1	1	InstaFlange	Ductile Iron	ASTM A536
2	*	Set Screws	Steel	AISI 4140

\* See Below

Style 3531 InstaFlange flange adapters join integral flanged valves and fittings to plain end pipe without welding or threading. Flange bolts (not provided) draw the insta flange toward the mating flange compressing a standard mechanical joint gasket making an effective seal between the two flanges and around the pipe. End restraint is provided when the set screws are tightened.

To assemble the InstaFlange, clean the plain end of the standard wall steel or ductile iron pipe. Lubricate both the gasket and the plain end of pipe. Slip the flange adapter and gasket over the pipe. Using standard flange bolts align the Insta-Flange with mating flange. Evenly tighten bolts alternately on opposing sides while maintaining an equal distance between flange faces. Alternately tighten all set screws evenly around the pipe, 1/2" set screws to 70 ft./lbs., 5/8" to 90 ft./lbs..

Nom. Pipe Size	150lb. Steel Pipe O.D.	125 lb. Cast Iron Pipe O.D.	Dimensions (inches)			Standard Set Screws		Wt.	Max. Deflection Angle	Deflection 18ft. Length (inches)	Working Pressure (psi)
			Flange Dia. A	Flange Thickness B	Bolt Hole Dia. D	Qty. E	Size E				
3	3.50	3.80	7.5	1.80	3/4	4	1/2 x 1.5	5	2'-10'	6.00	175
4	4.50	4.80	9	1.80	3/4	4	1/2 x 1.5	7	2'-10'	8.14	175
6	6.63	6.90	11	1.80	7/8	8	1/2 x 1.5	10	2'-2'	7.56	175
8	8.63	9.05	13.5	2.30	7/8	8	5/8 x 1.75	16	2'-2'	7.56	175
10	10.75	11.10	16	2.30	1	12	5/8 x 1.75	25	1'-56'	7.28	175
12	12.75	13.20	19	2.30	1	12	5/8 x 1.75	33	1'-50'	6.91	175

A

THIS DRAWING AND ALL INFORMATION THEREON IS THE PROPERTY OF PAM, LTD. AND SHALL NOT BE USED, COPIED, OR REPRODUCED WITHOUT WRITTEN CONSENT. ALL DESIGN AND INVENTION RIGHTS ARE RESERVED.

A	Working Pressure was 250				5-12-95			
PowerSeal				P.O. Box 2014 Wichita Falls, Texas				
TITLE								
Model 3531 InstaFlange								
SIZE	DRAFTSMAN	DATE	APPROVAL	DATE	DRAWING NO.		REV	
B	EHK	11-10-93			BSC383			
SCALE	NTS	SUPERSEDES		N/A	SHEET	1	OF	1