



**PowerSeal**  
PIPELINE PRODUCTS CORPORATION

# 4810

## CASING SPACER

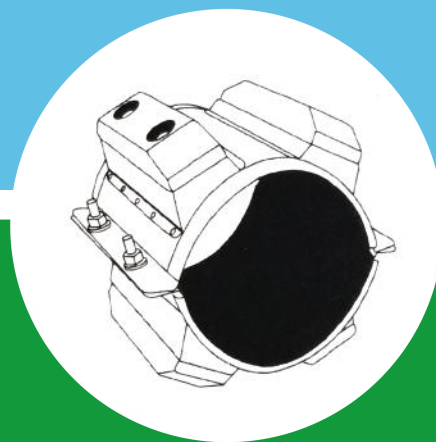
Casing Chock



Model 4810



- Available for all types of pipes
- Sizes 4" and up
- Multiple pipe positions available
- All Stainless steel construction
- Quick turn-around
- Grade control available



2-2018

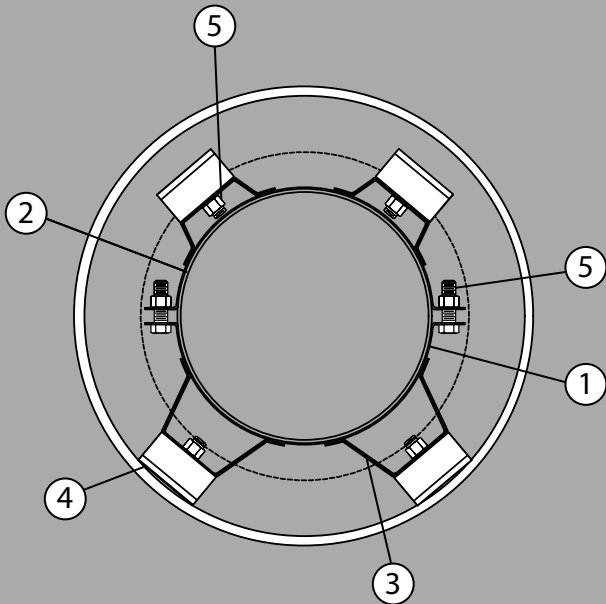
# 1-800-800-0932

www.powerseal.com • 701 Pleasant View Drive Wichita Falls, TX 76306 • 940-767-5566 fax: 940-723-8378

## FITTING SOLUTIONS FOR HARSH ENVIRONMENTS



## COMPONENT REFERENCE



### FEATURES AND BENEFITS

The most cost effective engineered method for centering or custom positioning carrier pipes within casing pipes. These fittings eliminate the time consuming practice of attaching short service life wooden skids to the carrier pipe with cumbersome straps or banding.

#### Reduce Cost

- Eliminate cost of filling annular space between casing pipe and carrier pipe with sand or gravel
- One man can install chocks on pipe
- No special tools required
- Quick installation time

#### Material

- Corrosion-proof stainless steel and elastomeric PVC
- UHMW Polyethylene runners
- Carbon steel spacers available with paint primer or epoxy

#### Versatility

- Available in sizes 4" and up
- Low-friction coefficient risers assures easy push
- Provides electrical insulation
- Custom engineering can:
  - Correct improper graded sewer pipes
  - Center pipeline rehabilitation sliplining carriers
  - Position insulated pipe without damaging insulation
  - Place gravity sewer lines to on-grade requirements
- Multiple carrier configurations available
- High strength for jack and bore pushes prevent over bellng
- Easily secured to pipe
- Provides accessibility for pipeline maintenance

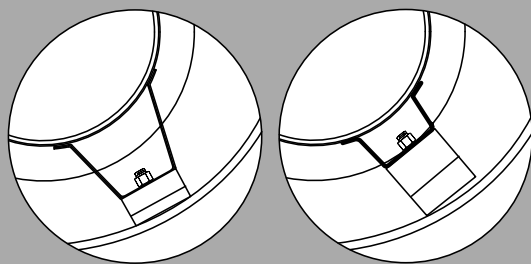
### MATERIAL SPECIFICATIONS

#### ASSEMBLY BILL OF MATERIALS

ITEM	PART NUM	MATERIAL	MAT. SPEC.
1	Panel	Stainless Steel type 304	ASTM A240
2	Liner	Elastomeric PVC	ASTM D149
3	Riser	Stainless Steel type 304	ASTM A240
4	Chock Skid	Glass Reinforce Nylon	ASTM D638
5	Fasteners	Stainless Steel type 304	ASTM A193

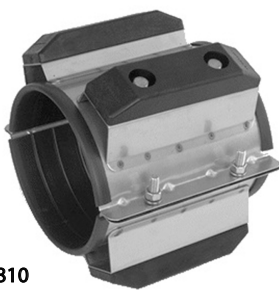
# 1-800-800-0932

www.powerseal.com • 940-767-5566 fax: 940-723-8378  
701 Pleasant View Drive Wichita Falls, TX 76306



PowerSeal's Risers are designed to place the skid in full contact with the inside surface of the casing pipe. This is a critical design element that evenly distributes the load force to all support members.

PowerSeal's Riser      Competitor's Riser



Model 4810

